

Product datasheet for **RC226351**

IGSF9 (NM_001135050) Human Tagged ORF Clone

Product data:

Product Type:	Expression Plasmids
Product Name:	IGSF9 (NM_001135050) Human Tagged ORF Clone
Tag:	Myc-DDK
Symbol:	IGSF9
Synonyms:	FP18798; IGSF9A; Nrt1
Mammalian Cell Selection:	Neomycin
Vector:	pCMV6-Entry (PS100001)
E. coli Selection:	Kanamycin (25 ug/mL)
ORF Nucleotide Sequence:	>RC226351 representing NM_001135050 Red=Cloning site Blue=ORF Green=Tags(s)

TTTTGTAATACGACTCACTATAGGGCGGCCGGAATTCGTCGACTGGATCCGGTACCGAGGAGATCTGCC
GCC**CGATCGCC**

ATGGTGTGGTGCCTCGGCTGGCCGTCTCAGCCTGGTCATCAGCCAGGGGGCTGACGGTCGAGGGAAGC
CTGAGGTGGTATCGGTGGTGGGCCGGCTGGGGAGAGTGTGGTGTGGGCTGTGACCTGTGCCCCCGGC
CGGCCGGCCCCCTGCATGTCTCGAGTGGCTGCGCTTTGGATTCTGCTTCCCATCTTCATCCAGTTC
GGCCTCTACTCTCCCGAATTGACCCTGATTACGTGGGACGAGTCCGGCTGCAGAAGGGGGCCTCTCTCC
AGATTGAGGGTCTCCGGGTGGAAGACCAGGGCTGGTACGAGTGGCGGTGTTCTTCTGGACCAGACAT
CCCTGAAGACGATTTTGCTAACGGCTCCTGGGTGCATCTGACAGTCAATTCACCCCTCAATTCAGGAG
ACACCTCCTGCTGTGTTGGAAGTGCAGGAAGTGGAGCCTGTGACCCTGCCTTGTGTGGCCGTGGCAGCC
CCCTGCCTCATGTGACGTGGAAGCTCCGAGGAAAGGACCTTGGCCAGGGCCAGGGCCAGGTGCAAGTGCA
GAACGGGACGCTGCGGATCCGCCGGGTAGAGCGAGGCAGCTCTGGGGTCTACACCTGCCAAGCCTCCAGC
ACTGAGGGCAGCGCCACCCAGCCACCCAGCTGCTAGTGTAGGACCCCAAGTCACTGTTGGTCCCGCCCA
AGAACAGCACAGTCAATGCCTCCAGGATGTTTTCATTGGCCTGCCATGCTGAGGCATACCCTGCTAACCT
CACCTACAGCTGGTTCAGGACAACATCAATGTCTTCCACATTAGCCGCTGCAGCCCGGGTGGGATC
CTGGTGGACGGGAGCCTCGGCTGCTGGCCACCCAGCCTGATGATGCCGGCTGTACACCTGTGTGCCCA
GCAATGGCCTCCTGCATCCACCCTCAGCCTCTGCCTACCTCACTGTGCTTACCCAGCCAGGTGACAGC
TATGCCTCCTGAGACACCCTGCCATAGGCATGCCGGGGGTGATCCGCTGCCCGGTTCTGTGCCAACCC
CCACTGCTCTTTGTCAGCTGGACCAAGGATGGAAGGCCCTGCAGCTGGACAAGTTCCTGGCTGGTCCC
AGGGCACAGAAGGCTCACTGATCATCGCCCTGGGAACGAGGATGCCCTGGGAGAATACTCCTGCACCCC
CTACAACAGTCTTGGTACCGCCGGGCCCTCTCTGTGACCCGCTGCTGCTCAAGGCTCCCCAGCTTTT
ATAGAGCGGCCCAAGGAAGAATATTTCCAAGAAGTAGGGCGGGAGCTGCTCATCCCTGCTCCGCCAAG
GGGACCCTCCTCCTGTTGCTCTTGGACCAAGGTGGGCCGGGGCTGCAAGGCCAGGCCAGGTGGACAG
CAACAGCAGCCTCATCTGCGACCATTGACCAAGGAGGCCACGGGCACTGGGAATGCAGTGCCAGCAAT



[View online >](#)

GCTGTGGCCCGAGTGGCCACCTCCACGAACGTCTACGTGCTGGGCACTAGCCCTCATGTTGTCACCAATG
TGTCCGTGGTGGCTTTGCCAAGGGTGCCAATGTCTCCTGGGAGCCTGGCTTTGATGGTGGTTATCTGCA
GAGATTAGTGTCTGGTACACCCACTGGCCAAGCGTCTGACCGAATGCACCATGACTGGGTGTCCTTG
GCAGTGCCTGTGGGGGCTGCTCACCTCCTAGTGCCAGGGCTGCAGCCCCACCCAGTACCAGTTACAGCG
TGCTAGCTCAGAACAAAGTGGGGAGTGGTCCCTTACAGGAAATCGTCTTGTCTGCTCCGGAAGGGCTTCC
TACCACGCCAGCTGCACCCGGGCTTCCCCAACAGAGATACCGCCTCCCTGTCCCTCCGCGGGGCTGTG
GTGGCAGTGAGGACACCCCGGGGGTACTCCTGCATTGGGATCCCCAGAGCTGGTCCCTAAGAGACTGG
ATGGCTACGTCTTGAAGGCCGGCAAGGCTCCCAGGGCTGGGAGGTGCTGGACCCGGCTGTGGCAGGCAC
AGAAACAGAGCTGCTGGTGCCAGGCCTCATCAAGGATGTTCTCTACGAGTTCGCGCTCGTGGCCTTCGCG
GGCAGCTTCGTCAGCGACCCAGCAACCGGCCAACGTCTCCACTTCCGGTCTGGAGGTCTACCCTTCGC
GCACGCAGCTGCCGGGCTCCTGCCTCAGCCCGTGTGGCCGGCGTGGTGGGCGGAGTCTGCTTTCTGGG
AGTGGCCGCTCTGTGAGCATCCTGGCCGGCTGCCTCTGAACCGGCGCAGGGCTGCCCGCCGCCCGCC
AAGCGCTCCGCAAGATCCACCTTTATCTTCTCCTCGACCGGGAAGTCAGCTGCACCTCTGCTCTGG
GCTCAGGCAGTCTGACAGCGTGGCGAAGCTGAAGCTCCAGGGATCCCCAGTCCCAGCCTGCGCCAGAG
TCTGCTCTGGGGGATCCTGCCGGAACCTCCAGCCCCACCCGGATCCTCCATCTAGCCGGGACCCCTTA
CCTCTGGAGCCATTTGCCGGGGCCAGACGGGCGCTTTGTGATGGGGCCACTGTGGCGCCCCCCAGG
AAAGGTACAGCCGGGAGCAGGCAGAACCTCGGACTCCAGCCCAGCGTCTGGCCCGGTCTTTGACTGTAG
CAGCAGACGCCCCAGTGGGGACCCAGCCCTCTGCATTGAAGACATCAGCCCTGTGGCACCCCTCCA
GCAGCCCCACCCAGTCCCTTGCCAGGCTCTGGACCCCTGCTCCAGTACCTGAGCCTGCCCTTCTCCGAG
AGATGAATGTGGATGGGACTGGCCCCGCTTGAAGAGCCAGCCCTGCTGCACCCCCAGATTACATGGA
TACCCGGCGCTGTCCCACCTCATCTTTCCTTCTTCCAGAAACCCCTCCTGTATCCCCAGGGAATCA
CTTCTGGGGCTGTGGTAGGGGCTGGGGCCACTGCAGAGCCCCCTTACACAGCCCTGGCTGACTGGACAC
TGAGGGAGCGGCTGCTGCCAGGCTTCTCCCTGCTGCCCTCGAGGCAGCCTACCAGCCAGAGCAGTGG
GCGAGGCAGCGCTTCGTTCTGCGGCCCCCTCCACAGCCCTCTGCAGGAGGCAGTACCTCAGCCCT
GCTCCAGGAGACACCAGCAGTGGGCCAGTGGCCCTGAGAGATGGCCCCGAAGGGAGCATGTGGTGACAG
TCAGCAAGAGGAGGAACACATCTGTGGACGAGAACTATGAGTGGGACTCAGAATTCCTGGGGACATGGA
ATTGCTGGAGACTTTGCACCTGGGCTTGGCCAGCTCCCGGCTCAGACCTGAAGCTGAGCCAGAGCTAGGT
GTGAAGACTCCAGAGGAGGGCTGCCTCCTGAACACTGCCCATGTTACTGGCCCTGAGGCCCGCTGTGCTG
CCCTTCGGGAGGAATTCCTGGCCTTCCGCCGCCGAGATGCTACTAGGGCTCGGCTACCAGCCTATCG
ACAGCCAGTCCCCACCCGAACAGGCCACTCTGCTG

ACGCGTACGCGGCCGCTCGAGCAGAACTCATCTCAGAAGAGGATCTGGCAGCAAATGATATCCTGGATT
ACAAGGATGACGACGATAAGGTTTAA

Protein Sequence: >RC226351 representing NM_001135050
Red=Cloning site Green=Tags(s)

```

MVWCLGLAVLSLVISQGADGRGKPEVSVVGRAGESVVLGCDLLPPAGRPPLHVIEWLRFGLLPIFIQF
GLYSPRIDPDYVGRVRLQKGASLQIEGLRVEDQGWYECRVFFLDQHIPPEDDFANGSWVHLTVNSPPQFQE
TPPAVLEVQELEPVTLRVCARGSPHPVTWKLRGKDLGQGQGVQVQNGTLRIRRVERGSSGVYTCQASS
TEGSATHATQLLVLPVPPVIVPPKNSVNASQDVSLACHAEAYPANLTYSWFQDNINVFHISRLOPRVRI
LVDGSLRLLATQPDDAGCYTCVPSNGLLHPPSASAYLTVLYPAQVTAMPPEPLPIGMGPVIRCPVRANP
PLL FVSWTKDGKALQLDKFPGWSQGTGSLIIALGNEDALGEYSCTPYNSLGTAGPSPVTRVLLKAPPAF
IERPKEEYFQEVGRELLIPCSAQDPPPVVSWTKVGRGLQGQAQVDSNSSLILRPLTKEAHGHWECASAN
AVARVATSTNVVYVLTGSPHVVTNVSVVALPKGANVSWEPGFDGGYLQRFVWYTPAKRPDRMHHDVWVSL
AVPVGAHLLVPGLQPHTQYQFSVLAQNKLGSGPFSEIVLSAPEGLPTTAAAPGLPPTTEIPPLSPRGL
VAVRTPRGVLLHWDPELVPKRLDGYVLEGRQGSQGWVLDPAVAGTETELLVPGLIKDVLVEFRLVAFA
GSFVSDPSNTANVSTSGLEVYPSRTQLPGLLPQPVLAGVVGVCFLGVAVLVSIAGCLLNRRRAARRRR
RRLRQDPPLIFSPTGKSAAPSALGSGSPDSVAKLKLQGSVPVSLRQSLWGDPAAGTSPHPDPPSSRGPL
PLEPICRPGDGRFVMGPTVAAPQERSGREQAEPRTPAQRLARSFDCSSSSPSGAPQLCIEDISPVAPP
AAPPSPPLPGPGPLLQYLSLPPFFREMNVGDWPPLEEPSAAPPDYMDTRCPTSSFLRSPETPPVSPRES
LPGAVVGAGATAEPPYALADWTLRERLLPGLLPAAPRGLTSQSSGRGSASFLRPPSTAPSAGGSYLSL
APGDTSSWASGPERWPRREHVTVSKRRNTSVDENYEWDFEPGDMELLETLHLGLASSRLRPEAEPELG
VKTPEEGCLLNTAHTVGPEARCAALREEFLAFRRRRDATRARLPAYRQVPVHPHEQATLL
    
```

TRTRPLEQKLISEEDLAANDILDYKDDDDKV

Chromatograms: https://cdn.origene.com/chromatograms/mk8006_d06.zip

Restriction Sites: SgfI-MluI

Cloning Scheme:



ACCN: NM_001135050

ORF Size: 3537 bp

OTI Disclaimer: Due to the inherent nature of this plasmid, standard methods to replicate additional amounts of DNA in E. coli are highly likely to result in mutations and/or rearrangements. Therefore, OriGene does not guarantee the capability to replicate this plasmid DNA. Additional amounts of DNA can be purchased from OriGene with batch-specific, full-sequence verification at a reduced cost. Please contact our customer care team at custsupport@origene.com or by calling 301.340.3188 option 3 for pricing and delivery.

The molecular sequence of this clone aligns with the gene accession number as a point of reference only. However, individual transcript sequences of the same gene can differ through naturally occurring variations (e.g. polymorphisms), each with its own valid existence. This clone is substantially in agreement with the reference, but a complete review of all prevailing variants is recommended prior to use. [More info](#)

OTI Annotation: This clone was engineered to express the complete ORF with an expression tag. Expression varies depending on the nature of the gene.

Components: The ORF clone is ion-exchange column purified and shipped in a 2D barcoded Matrix tube containing 10ug of transfection-ready, dried plasmid DNA (reconstitute with 100 ul of water).

Reconstitution Method:

1. Centrifuge at 5,000xg for 5min.
2. Carefully open the tube and add 100ul of sterile water to dissolve the DNA.
3. Close the tube and incubate for 10 minutes at room temperature.
4. Briefly vortex the tube and then do a quick spin (less than 5000xg) to concentrate the liquid at the bottom.
5. Store the suspended plasmid at -20°C. The DNA is stable for at least one year from date of shipping when stored at -20°C.

RefSeq: [NM_001135050.2](#)

RefSeq ORF: 3540 bp

Locus ID: 57549

UniProt ID: [Q9P2J2](#)

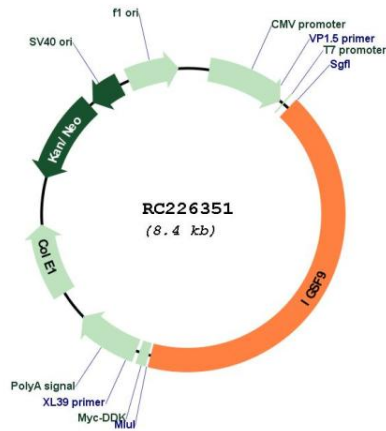
Cytogenetics: 1q23.2

Protein Families: Transmembrane

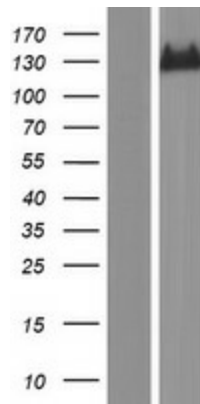
MW: 126.4 kDa

Gene Summary: Functions in dendrite outgrowth and synapse maturation.[UniProtKB/Swiss-Prot Function]

Product images:



Circular map for RC226351



Western blot validation of overexpression lysate (Cat# [LY427537]) using anti-DDK antibody (Cat# [TA50011-100]). Left: Cell lysates from untransfected HEK293T cells; Right: Cell lysates from HEK293T cells transfected with RC226351 using transfection reagent MegaTran 2.0 (Cat# [TT210002]).