

Product datasheet for RC226350

p114RhoGEF (ARHGEF18) (NM_001130955) Human Tagged ORF Clone

Product data:

Product Type:	Expression Plasmids
Product Name:	p114RhoGEF (ARHGEF18) (NM_001130955) Human Tagged ORF Clone
Tag:	Myc-DDK
Symbol:	p114RhoGEF
Synonyms:	P114-RhoGEF; p114RhoGEF; RP78; SA-RhoGEF
Mammalian Cell Selection:	Neomycin
Vector:	pCMV6-Entry (PS100001)
E. coli Selection:	Kanamycin (25 ug/mL)
ORF Nucleotide Sequence:	>RC226350 representing NM_001130955 Red=Cloning site Blue=ORF Green=Tags(s)

TTTTGTAATACGACTCACTATAGGGCGGCCGGAATTCGTCGACTGGATCCGGTACCGAGGAGATCTGCC
GCC**CGATCGCC**

ATGGTCACAGTGGGGACCAATATCCTGCCCTCCAGACCCGCTGCTTCAGCCAATACAGCAAGGGAAGACG
CAGCTCTGTTTTCTAGAAGGATCCCACCGAGGCATAAAAAACGGCGCAGCCAGCCTGGCGCCGCGCCGGG
TCCCGGAGCCCCGGGCGGAACATGGGGAATGCGCACTCCAAAAGCGGGACAGGCACAGCGCGCTCCCC
GGCCGCCCGAGCTGTCTTTTACGGCTCTTCCCCAGGAAATGGAGCGAGAACGTCTTCTTGATAACG
AGCTGCTGACCTCAAGATCCTGTCTGTCTGCGCCGAGTCGGAGCGGGCTTCCGCGCCGGGACCT
CCGCTACCCGACCCACTTCTCAGCACCAACTCTGTCTTGCCTCTGTACAGCCTCGCTCAAGGAGCAC
CCCCGGGGCACCCCTCTGTCCGATGGCAGCCCGGCCCTGTCCAGGAATGTCGGTATGACGGTCTCTCAGA
AAGGGGTCCCCAGCAACACCGAGCCCGGCTGGCCCTGGGACGCAACTCGGACCAATCACAGGAGAGAT
GGATGAAGCCGATTCTGCGTTTTTAAATTTAAGCAGACAGCTGATGACTCTGTCCCTTACATCTCCA
AACACCGAGTCCATTTTTGTAGAAGATCCCTACCCGCTCGCTGAGGAGTGAGATTGAGTCAGACGGCC
ACGAGTTTGAAGCTGAGTCCGGAGCCTCGCCGTGGATGCAGCCTACGCCAAGAAGCAAAAGAGGGAGGT
GGTGAAAAGACAAGATGTCTTTATGAGCTGATGCAGACAGAGGTGCACCAAGTGGGACGCTCAAGATC
ATGCTGAAGGTGACTCCAGGGCCCTGCAGGAGGAGCTGCAGTTCAGCAGCAAGGCCATTGGCCGCTCT
TCCCATGCGCTGACGACCTGCTGGAGACGCACAGCCACTTCTCGCTCGGCTCAAGGAGCCCGCCAGGA
GTCCCTGGAGGAGGCGAGTGACCGAATTATGTATCCAGAAAATCGGCGACCTCCTGGTTACAGAGTTT
TCAGGTGAAAATGGGAGAGAATGAAAGAAAAGTACGGTGTGTTTTGTAGTGGCCACAATGAAGCTGTTA
GTCATTACAAGTTGCTGCTTCCAGCAAAACAAGAAATTTCAAACCTTGATCAAGAAAATGGCAACTTCTC
CATCGTGCGGCGCTTGGCGTGCAGGAGTGCAATCTCCTGGTTACACAACGCATAACCAATACCCAGTG
CTGGTGGAGCGCATCATCCAGAACCGGAAGCTGGCACTGAGGACTATGAAGACCTGACCCAGGCCCTTGA
ACCTCATCAAAGATATCATCTACAAGTGGACGCCAAGGTGAGTGTGAGAAGGGCCAGCGCCTCAG
GGAGATCGCAGGAAGATGGACCTGAAGTCTTCCAGCAAACTCAAGAACGGGCTCACCTCCGAAGGAA



[View online »](#)

GACATGCTTCAGCGGCAGCTCCACCTGGAGGGCATGCTATGCTGGAAGACCACATCAGGGCGCTTAAAG
ATATCCTGGCTATCCTGCTGACCGACGTAATTTGCTGCTACAAGAAAAAGATCAGAAATACGTCTTTGC
TTCTGTGGACTCAAAGCCACCCGTCATCTCGTTACAAAAGCTCATCGTGAGGGAAGTGGCCAACGAGGAG
AAAGCGATGTTTTCTGATCAGCGCCTCCTTGCAAGGGCCGAGATGTATGAAATCTACACGAGCTCCAAAG
AGGACAGGAACGCCTGGATGGCCACATCCAAAGGGCTGTGGAGAGCTGCCCTGACGAGGAGGAGGGGCC
CTTCAGCCTGCCGAAGAGGAAAGGAAGTGGTCGAGGCCCGCCACGAGACTCCGGGACTTTCAAGAG
CGTTGAGCATGAAAGACCAGCTGATCGCACAGAGCCTCTAGAGAAACAGCAGATCTACCTGGAGATGG
CCGAGATGGGCGCCTCGAAGACCTGCCCCAGCCCCGAGGCCTATTCCGTGGAGGGGACCCATCCGAGAC
CCTGCAGGGGAGCTAATTCTCAAGTCGGCCATGAGCGAGATCGAGGGCATCCAGAGCCTGATCTGCAGG
CAGCTGGGCAGCGCAACCGCCAGGCGGAAGACGGAGGCAGCTCCACAGGCCCGCCAGGAGGGCTGAGA
CCTTCGCGGGCTACGACTGCACAAACAGCCCCACCAAGAATGGCAGTTTCAAGAAGAAAGTCAGCAGCAC
TGACCCAGGCCCGAGACTGGCGAGGCCCCCCAACAGCCGGACTTGAAGCTCAGTGACAGTGACATT
CCTGGGAGCTCTGAGGAATCGCCGAGGTGGTGGAGGCCAGGCACGGAATCCGATCCCCGTCTGCCCA
CCGTCTGGAGTCGGAGCTTGTCCAGCGGATCCAGACACTGTCCAGCTGCTCCTGAACCTTCAGGCGGT
AATCGCCACCAGGACAGCTATGTGGAGACGCAGCGGGTGCCATCCAGGAGCGGAGAAGCAGTTCGGG
CTGCAGTCGACCGTGGGAACCTGCTGCTGGAGCAGGAGCGGCAACGCAACTTCGAGAAGCAGCGGGAGG
AGCGCGCGGCCCTGGAGAAGCTGCAGAGCCAGCTGCGGCACGAGCAGCAGCGCTGGGAGCGCGAGGCCA
GTGGCAGCACCAGGAGCTGGAGCGTGGCGGCGCGGGTGCAGGAGCGCGAGGGCGAGGCCGCGCAGCTA
CGCGAGCGGTGGAGCAGGAGCGGGCCGAGCTGGAGCGCCAGCGCCAGGCCTACCAGCACGACCTGGAGC
GGCTGCGCGAGGCCCAGCGTGGCGTGGAGCGGAGCGGGAGCGCCTGGAGCTGCTGCGCCGCTCAAGAA
GCAGAACACCGCGCCAGGCGCGTGGCGCCGACACACTGGCCGAGGCCAGCCCCAAGCCACCTCCC
AGCTTCAACGGGAAGGGCTGGAGGGCCCTCGTGTGAGCATGCTGCCATCCGGCGTGGGGCCAGAGTACG
CAGAGCGCCCCGAGGTGGCTGCGCGGACAGCGCCCCACCGAGAACCAGGCTGGCCAAGAGCGATGTGCC
CATCCAGCTGCTCAGCGCCACCAACCAAGTTCAGAGGCAGGCGGCGTGCAGCAGCAGATCCCCACCAAG
CTGGCGGCTCCACCAAGGGTGGCAAGGACAAGGCGGCAAGAGCAGGGGCTCTCAGCGCTGGGAGAGCT
CAGCGTCTTCGACCTGAAGCAGCAGCTGCTGCTCAACAAGCTCATGGGAAAGATGAGAGCACCTCAGG
GAACCGCGCTCGCTGAGCCCTATCCTGCCCGGCAGACACAGTCTGCGCCCCACCAGACCCTGGCTTC
CCCGCCCCGAGCCACCGCCAGCTGACAGCCCCTCCGAGGGCTTCTCTCAAGGCCGGGGCACAGCCC
TCCTGCCCGGGCCCCAGCTCCCTCGCCACTGCCGGCCACACCACTCAGCGCCAAGGAGGACGCCAGCAA
AGAAGACGTCATCTTCTC

AGCGGACCGACGCGTACGCGGCCGCTCGAGCAGAACTCATCTCAGAAGAGGATCTGGCAGCAAATGATATCC
TGGATTACAAGGATGACGACGATAAGGTTAA

Protein Sequence: >RC226350 representing NM_001130955
 Red=Cloning site Green=Tags(s)

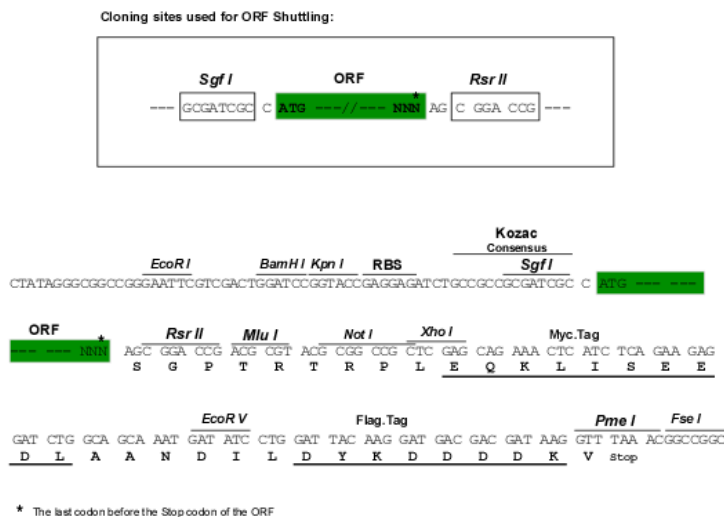
MVTVGTNILPSRPAASANTAREDAALFSRRIPPRHKNGAAQPGAAPGPGAPGANMGNAHSKSGDRHSALP
 GRPELSFYGSFPRKWSENVFLDNELLTSKILSVLRPQSERGFRAGDLRYPTHFLSTNSVLASVTASLKEH
 PRGTLSDGSPALSRNVGMTVSQKGGPQPTSPAGPGTQLGPITGEMDEADSAFLFKQTADDLSLTSP
 NTERISIFVEDPYTASLRSEIESDGHFEAEWSLAVDAAYAKKQKREVVKRQDVL YELMQTEVHHVRTLKI
 MLKVYSRALQEELQFSSKAIGRLFPCADDLLETHSHFLARLKERRQESLEEGSDRNYVIQKIGDLLVQOF
 SGENGERMKEKYGVFCSGHNEAVSHYKLLLQKNKFQNLIKKIGNFSIVRRLGVQECILLVTQRITKYPV
 LVERIIQNTAAGTEDYEDLTQALNLIKDII SQVDAKVSECEKQQLREIAGKMDLKSSSKLKNGLTFRKE
 DMLQRQLHLEGLCWKTTSGRLKDILAILLTDVLLLLQEKDQKYVFAVDSKPPVISLQKLVREVANEE
 KAMFLISASLQGPMEYIYTSKEDRNAWMAHIQRAVESCPEEEGPFSLPEEERKVVEARATRLRDFQE
 RLSMKDQLIAQSLLEKQIYLEMAEMGGLEDLPQPRGLFRGGDPSETLQGELILKSAMSEIEGIQSLICR
 QLGANGQAEDGGSSTGPPRRAETFAGYDCTNSPTKNGSFKKKVSSTDRPRDWRGPPNSPDLKSDSDI
 PGSSEESPVVEAPGTESDPRPTVLESELVQRIQTLSQLLLNLQAVIAHQDSYVETQRAAIQEREKQFR
 LQSTRGNLLEQERQRNFEKQREERAALKLSQLRHEQQRWERERQWQHQELERAGARLQEREGEARQL
 RERLEQERAELERQRQAYQHDLERLREAQRAVERERERLELLRRLKKQNTAPGALPPDTLAEAPPSPHP
 SFNGEGLEGRVSMPLPSGVGPEYAEARPEVARRDSAPTENRLAKSDVPIQLLSATNQFQRQAQVQQIPTK
 LAASTKGGKDKGGKSRGSQRWESSASFDLKQQLLLNKLGMKDESTSRNRRSLSPILPGRHSPAPPDPGF
 PAPSPPPADSPSEGLKAGGTALLPGPPAPSPLPATPLSAKEDASKEDVIF

SGPTRRRLEQKLI SEEDLAANDILDYKDDDDKV

Chromatograms: https://cdn.origene.com/chromatograms/mk8031_f12.zip

Restriction Sites: SgfI-RsrII

Cloning Scheme:

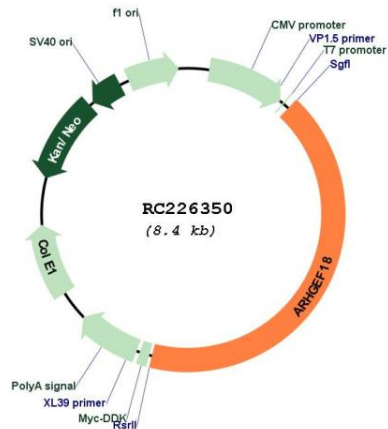


ACCN: NM_001130955

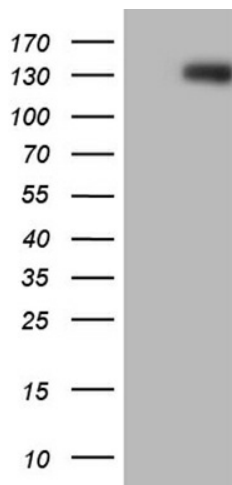
ORF Size: 3519 bp

OTI Disclaimer:	The molecular sequence of this clone aligns with the gene accession number as a point of reference only. However, individual transcript sequences of the same gene can differ through naturally occurring variations (e.g. polymorphisms), each with its own valid existence. This clone is substantially in agreement with the reference, but a complete review of all prevailing variants is recommended prior to use. More info
OTI Annotation:	This clone was engineered to express the complete ORF with an expression tag. Expression varies depending on the nature of the gene.
Components:	The ORF clone is ion-exchange column purified and shipped in a 2D barcoded Matrix tube containing 10ug of transfection-ready, dried plasmid DNA (reconstitute with 100 ul of water).
Reconstitution Method:	<ol style="list-style-type: none">1. Centrifuge at 5,000xg for 5min.2. Carefully open the tube and add 100ul of sterile water to dissolve the DNA.3. Close the tube and incubate for 10 minutes at room temperature.4. Briefly vortex the tube and then do a quick spin (less than 5000xg) to concentrate the liquid at the bottom.5. Store the suspended plasmid at -20°C. The DNA is stable for at least one year from date of shipping when stored at -20°C.
RefSeq:	NM_001130955.1 , NP_001124427.1
RefSeq ORF:	3360 bp
Locus ID:	23370
UniProt ID:	Q6ZSZ5
Cytogenetics:	19p13.2
MW:	130.6 kDa
Gene Summary:	Rho GTPases are GTP binding proteins that regulate a wide spectrum of cellular functions. These cellular processes include cytoskeletal rearrangements, gene transcription, cell growth and motility. Activation of Rho GTPases is under the direct control of guanine nucleotide exchange factors (GEFs). The protein encoded by this gene is a guanine nucleotide exchange factor and belongs to the Rho GTPase GEF family. Family members share a common feature, a Dbl (DH) homology domain followed by a pleckstrin (PH) homology domain. Alternatively spliced transcript variants encoding different isoforms have been identified. [provided by RefSeq, Nov 2018]

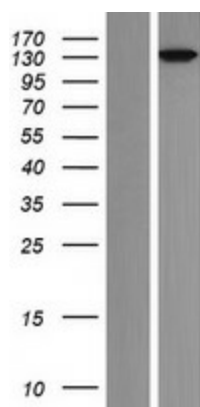
Product images:



Circular map for RC226350



HEK293T cells were transfected with the pCMV6-ENTRY control (Cat# [PS100001], Left lane) or pCMV6-ENTRY ARHGEF18 (Cat# RC226350, Right lane) cDNA for 48 hrs and lysed. Equivalent amounts of cell lysates (5 ug per lane) were separated by SDS-PAGE and immunoblotted with anti-ARHGEF18 (Cat# [TA810390])(1:2000). Positive lysates [LY427320] (100ug) and [LC427320] (20ug) can be purchased separately from OriGene.



Western blot validation of overexpression lysate (Cat# [LY427320]) using anti-DDK antibody (Cat# [TA50011-100]). Left: Cell lysates from untransfected HEK293T cells; Right: Cell lysates from HEK293T cells transfected with RC226350 using transfection reagent MegaTran 2.0 (Cat# [TT210002]).