

Product datasheet for RC226345

Tomosyn (STXBP5) (NM_001127715) Human Tagged ORF Clone

Product data:

Product Type:	Expression Plasmids
Product Name:	Tomosyn (STXBP5) (NM_001127715) Human Tagged ORF Clone
Tag:	Myc-DDK
Symbol:	Tomosyn
Synonyms:	LGL3; LLGL3; Nbla04300
Mammalian Cell Selection:	Neomycin
Vector:	pCMV6-Entry (PS100001)
E. coli Selection:	Kanamycin (25 ug/mL)
ORF Nucleotide Sequence:	>RC226345 representing NM_001127715 Red=Cloning site Blue=ORF Green=Tags(s)

TTTTGTAATACGACTCACTATAGGGCGGCCGGAATTCGTCGACTGGATCCGGTACCGAGGAGATCTGCC
GCC**CGATCGC**C

ATGAGGAAATTCAACATCAGGAAGGTGCTGGACGGCCTGACCGCCGGCTCGTCCTCGGCCTCGCAGCAGC
AACAGCAGCAGCATCCGCTGGGAACCGGGAGCCGGAGATCCAGGAAACGCTCCAGTCCGAGCACTTTCA
GCTCTGCAAGACTGTTCCCATGGATTTCCCTATCAACCCTCAGCCCTGGCCTTTGATCCTGTACAGAAG
ATCCTGGCAGTGGAACTCAGACTGGTGTCTTAAGGCTCTTTGGTCGTCAGGAGTAGAATGTTATTGCC
AGCATGACAGTGGAGCTGCAGTAATCCAGCTCCAGTTCCTGATTAATGAGGGAGCGCTTGTGAGTGCCTT
GGCTGATGACACCTTACACTTATGGAATTTACGTCAGAAGAGGCCCTGCCATACTACATTCGTTAAATTT
TGCAGAGAAAGGGTTACATTTTGCCATCTGCCTTTCCAGAGTAAGTGGCTCTATGTGGGCACTGAACGAG
GTAATATACATATTGTCATGTGGAGTCCCTCACACTCTCAGGCTACGTCATTATGTGGAATAAAGCCAT
TGAAGTGTCACTAAATCTACCCAGGACCTGTGGTCCATATAAGTGATAATCCAATGGACGAGGGAAAAG
CTTTTGATTGGCTTTGAATCTGGAACAGTAGTTTTATGGGACCTCAAATCAAAGAAAGCCGACTACAGAT
ACACATATGATGAGGCTATCCACTCTGTGCTTGGCATCATGAAGGAAAACAATTTATTTGCAGTCATTC
AGATGGCACCTTGACTATATGGAATGTAAGGTCCCCTGCTAAACCAGTACAGACAATCACTCCACATGGA
AAACAGTTAAAGGATGGGAAGAAGCCAGAACCATGCAAACCTATCCTCAAGGTGGAATTCAAAACGACTA
GATCTGGGAGCCTTTTATTATTTTATCAGGAGGTTTGTATGATACTGTAGGAAGAAGACCTTGCTT
AACAGTGTATGATGGGAAAAGCACTGCTGTGCTAGAAAATGGACTATTCAATTGTTGATTTTCTAACGCTG
TGTGAAACACCATACCCAAATGATTTTCAAGAACCATATGCTGTGGTTGTTCTTCTAGAAAAGGATTTAG
TACTTATAGACCTTGACAAAAATGGATATCCTATATTTGAAAAATCCCTACCCTTTGAGTATACATGAGTC
CCCTGTTACATGTTGCGAATATTTTGGGATTGCTCTGTGGACCTTATTCCTGCACTTTATTCTGTTGGA
GCTAGACAGAAACGTCAAGGTTACAGCAAAAAGGAATGGCCCATCAACGGAGGTAATTTGGGCTTGGGTG
CTCAAAGTACCAGAAAATAATTATTACAGGGCATGCTGATGGGTCAGTTAAGTTCTGGGATGCTTCTGC
AATAACTACAAGTATTATATAAGCTAAAGACATCTAAAGTATTTGAAAAGTCAAGAAAATAAGATGAC



[View online »](#)

AGGCCAAACACAGACATTGTAGATGAAGATCCATATGCCATTCAGATCATCTCCTGGTGTCCAGAAAGTA
GAATGCTGTGCATCGCTGGAGTTTCAGCTCATGTCATTATTTATAGATTCAGCAAGCAGGAAGTAATCAC
AGAAGTCATTCGATGCTTGAAGTTTCGATTATTATATGAGATAAATGATGTGGAAACTCCGGAGGGTGAG
CAGCCACCACCTTTGCCAACCCCGTGGGAGGGTCCAACCCTCAGCCCATCCCTCCTCAGTCTCATCCAT
CTACCAGTAGCAGTTCATCTGATGGGCTTCGTGATAATGTACCTTGTTTTAAAAGTTAAAACTCACCCT
TAAACAGTCTCCAGGTTATCAAACAGAAGTATTTCAGTTGGTTTTGGTGGGTGGAGAACCACCACAA
CAAAACCAGCCTGGCAGTCAATTCCTCTATGGACTGGTGGTTTTGGCAATTGCAATGGCATTGCTA
TGTTGACTACCTCCAGAAAGCAGTGTCTCAACCTGGGCACTATTGAATTATATGGCTCTAATGATCC
TTATCGGAGAGAACCCCGATCTCCTCGTAAATCTCGACAGCCTTCAGGAGCCGGTCTGTGTGATATTAGT
GAAGGGACTGTTGTTCCAGAGGATCGTGCAAATCTCCAACCTCTGGTCTTCATCACCACACAATTCAG
ATGATGAACAAAAATGAATAATTTTATAGAAAAGGTGAAGACAAAAGCAGAAAGTTTTCCAAGATGGT
AGCCAATGATATAGCAAAGATGTCAAGGAAGTTAAGCTTACCTACTGACCTAAAGCCTGATTTAGATGA
AAGATAACTCCTTAGCCGATCAGGAGTTCAAGTGTAACAAGCATTGACAAAGAATCCCGAGAAGCGA
TCTCCGCTCTTCAATTTCTGTGAAACGTTTACTCGAAAGACGGACTCGTCCCTTCCCTTGTCTATGGGT
TGGAACAACGCTAGGAACAGTGTGTGCTTGCCTGACTGAACCTTCCCCAGGGGGAGAGCAAAGACTTCTT
CAGCCAGTAATTGTGCTCCAAGTGGTACTATATTGAGGTTAAAAGGTGCAATCTTGAGAATGGCATTTC
TGGATACCACAGGCTGCTTAATACCACCTGCGTATGAACCCTGGAGAGAGCAATGTTCTCTGAAGAAAA
AGACGAAAAGGAGAAATTGAAAAACGGCGCCTGTCTCAGTATCCCCCTCCTCTCTCAGGAAATTAGT
GAAAACCAGTATGCAGTGATATGTTCTGAAAAGCAAGCAAAAGTAATCTCACTGCCAACCCAGAAGTGTG
CTTATAAGCAAAATATTACAGAGACCTCGTTTGTGCTTCGTGGAGATATTGTAGCATTGAGTAACAGTAT
CTGCCCTGCCTGTTTCTGTGCCAATGGACATAAATGACTTTTAGTTTGCCAAGTTAAGACCTCTGTTG
GATGTGTATTACTTGCCCTTACCAATATGCGGATAGCCAGAAGTCTGCTTTACCAACAATGGACAAG
CATTATACCTTGTTCACCTACAGAAATCCAGAGACTTACTTATAGTCAAGAGACCTGTGAAAATCTTCA
GGAAATGTTGGGTGAACCTTCACTCCTGTAGAAACACCTGAAGCACCAACAGGGGATTCTTTAAAGGC
TTATTTGGAGGTGGTGCACAATCTCTTGACAGAGAAGAATTTGGAGAATCGTCTCAGGAAAGGCTT
CAAGGAGCCTTGACAGCATATTCCTGGCCCTGGTGGCATTGAAGGCGTAAAAGGGGCAGCATCTGGAGT
TGTTGGTGAATTAGCACGAGCCAGGCTGGCACTAGATGAAAGAGGGCAGAAACTTGGCGATCTGGAAGAA
AGAAGTGCAGGATGTTATCAAGTGCAGAGTCATTTCTAAACATGCTCATGAGATTATGTTGAAATACA
AAGATAAGAAGTGGTACCAGTTC

ACGCGTACGCGGCCGCTCGAGCAGAACTCATCTCAGAAGAGGATCTGGCAGCAAATGATATCCTGGATT
ACAAGGATGACGACGATAAGGTTTAA

Protein Sequence: >RC226345 representing NM_001127715
Red=Cloning site Green=Tags(s)

```
MRKFNIRKVL DGLTAGSSASQQQQQHPGNREPEIQETLQSEHFQLCKTVRHGFYQPSALAFDPVQK
ILAVGTQTGALRLFGRPGVECYCQHDSGAAVIQLQFLINEGALVSALADDTLHLWNLRQKRPAIHLKLF
CRERVTFCHLPFQSKWL YVGTERRNIHIVNVEFSLSGYVIMWNKAIELSSKSHPGPVVHISDNPMDEGK
LLIGFESGTVVLDLKS KADYRYTYDEAIHSVAWHHEGKQFICSHSDGTLTIWNVRSAPKPVQITPHG
KQLKDGKKPEPCKPILKVEFKTTRSGEPFIILSGGLSYDTVGRRPCLTVMHGKSTAVLEMDYSIVDFLTL
CETPYPNDFQEPYAVVV LLEKDLVLIDL AQNGYPIFENPYPLSIHESPVTCCEYFADCPVDLIPALYSVG
ARQKRQGYSKKEWPINGGNWGLGAQSYPEIIITGHADGSVKFWASAITLQVLYKLKTSKVFESRNKDD
RPNTDIVDEDPIAIQII SWCPESRMLCIAGVSAHVIIYRF SKQEVITEVIPMLEVRLLYEINDVETPEGE
QPPPLPTPVGGSNPQIP PQSHPSTSSSSDGLRDNVPC LKVKNSPLKQSPGYQTELVIQLVWVGGEPPQ
QITSLAVNSSYGLVVF GNCNGIAMVDYLQKAVLLNLGTIELYGSNDPYRREPRSPRKSQPSGAGLCDIS
EGTVVPEDRCKSPTSG SSSPHNSDDEQKMNFI EKVKTKSRKFSKMVANDIAKMSRKLSLPTDLKPDLDV
KDNSFSRSRSSSVTSIDKESRE AISALHFCETFTTRKTDSSPSPCLWVGTTLGTVLVIALNLPPGGEQRL
QPVI VSPSGTILRLKGA ILRMAFLDTTGCLIPPA YEPWREHNVPEEKDEKEKLRKRRPVSVSPSSSQEIS
ENQYAVICSEKQAKVISLPTQNCAYKQNI TETSFVLRGDIVALSNSICLACFCANGHIMTFSLPSLRPLL
DVYYLPLTNMRIARTFC FTNNGQALYLVSPT EIQRLTYSQETCENLQEMLGELFTPVETPEAPNRGFFKG
LFGGGAQSLDREELFG ESSSGKASRSLAQHIPGPGGIEGVKGAASGVV GELARARLALDERGQKLGDL EE
RTAAMLSSAESFSKHAHE IMLKYKDKK WYQF
```

TRTRPLEQKLISEEDLAANDILDYKDDDDKV

Chromatograms: https://cdn.origene.com/chromatograms/mk8031_g01.zip

Restriction Sites: SgfI-MluI

Cloning Scheme:

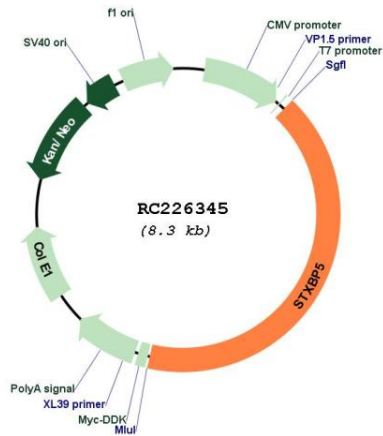


ACCN: NM_001127715

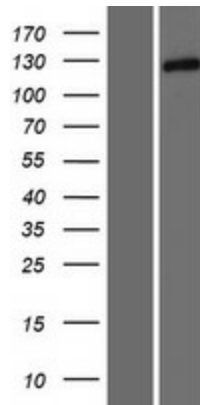
ORF Size: 3453 bp

OTI Disclaimer:	The molecular sequence of this clone aligns with the gene accession number as a point of reference only. However, individual transcript sequences of the same gene can differ through naturally occurring variations (e.g. polymorphisms), each with its own valid existence. This clone is substantially in agreement with the reference, but a complete review of all prevailing variants is recommended prior to use. More info
OTI Annotation:	This clone was engineered to express the complete ORF with an expression tag. Expression varies depending on the nature of the gene.
Components:	The ORF clone is ion-exchange column purified and shipped in a 2D barcoded Matrix tube containing 10ug of transfection-ready, dried plasmid DNA (reconstitute with 100 ul of water).
Reconstitution Method:	<ol style="list-style-type: none">1. Centrifuge at 5,000xg for 5min.2. Carefully open the tube and add 100ul of sterile water to dissolve the DNA.3. Close the tube and incubate for 10 minutes at room temperature.4. Briefly vortex the tube and then do a quick spin (less than 5000xg) to concentrate the liquid at the bottom.5. Store the suspended plasmid at -20°C. The DNA is stable for at least one year from date of shipping when stored at -20°C.
RefSeq:	NM_001127715.2 , NP_001121187.1
RefSeq ORF:	3456 bp
Locus ID:	134957
UniProt ID:	Q5T5C0
Cytogenetics:	6q24.3
MW:	127.4 kDa
Gene Summary:	Syntaxin 1 is a component of the 7S and 20S SNARE complexes which are involved in docking and fusion of synaptic vesicles with the presynaptic plasma membrane. This gene encodes a syntaxin 1 binding protein. In rat, a similar protein dissociates syntaxin 1 from the Munc18/n-Sec1/rbSec1 complex to form a 10S complex, an intermediate which can be converted to the 7S SNARE complex. Thus this protein is thought to be involved in neurotransmitter release by stimulating SNARE complex formation. Alternatively spliced transcript variants encoding different isoforms have been identified. [provided by RefSeq, Jul 2008]

Product images:



Circular map for RC226345



Western blot validation of overexpression lysate (Cat# [LY426872]) using anti-DDK antibody (Cat# [TA50011-100]). Left: Cell lysates from untransfected HEK293T cells; Right: Cell lysates from HEK293T cells transfected with RC226345 using transfection reagent MegaTran 2.0 (Cat# [TT210002]).