

Product datasheet for RC226344

MRF (MYRF) (NM_001127392) Human Tagged ORF Clone

Product data:

Product Type:	Expression Plasmids
Product Name:	MRF (MYRF) (NM_001127392) Human Tagged ORF Clone
Tag:	Myc-DDK
Symbol:	MRF
Synonyms:	11orf9; C11orf9; CUGS; MMERV; MRF; Ndt80; pqn-47
Mammalian Cell Selection:	Neomycin
Vector:	pCMV6-Entry (PS100001)
E. coli Selection:	Kanamycin (25 ug/mL)
ORF Nucleotide Sequence:	>RC226344 representing NM_001127392 Red=Cloning site Blue=ORF Green=Tags(s)

TTTTGTAATACGACTCACTATAGGGCGGCCGGAATTCGTCGACTGGATCCGGTACCGAGGAGATCTGCC
GCC**CGATCGCC**

ATGGAGGTGGTGGACGAGACGGAGGCGCTGCAGCGCTTCTCGAAGGCCACGACATCAACGGTGCCTGG
AGCCCTCCAACATAGACACCAGCATCCTGGAGGAGTACATCAGCAAGGAGGATGCCTCCGACCTCTGCTT
CCCTGACATCTGCTCCAGCCAGCTCGGCTCCTACTCCACGGGCAGCCTGCGATGCCTGGCTCCAGC
GGGTCCACCACCTGAGCCCCCTGGGGTGGACCCTCCCGGGGCGCCATGGTCCCTCCACCCCCGG
GCTACGGCACCCGCTGAACTGCAACAACAACACGGCATGGGCGCTGCCCAAGCCCTCCCGGGGGG
CACCGGGCCCCCATCAAGGCTGAGCCCAAGGCTCCCTATGCCCAAGGCACACTGCCGGACTCTCCCCA
GACTCGGGCTCCGAGGCCTACTCCCCAGCAGGTGAATGAGCCCCACCTCCTGCGCACGATAACCCCTG
AGACACTGTGCCAGTGGGAGTGCCCTCCCGCTGGAGCATCCGCCCCACCTCCAGCCACTTGCCAGG
CCCCCGCCACCCCAACCCCACTACTACCCTGTCTGACGCGGGATCTGTACATGAAGGCCGAG
CCCCGATCCCCACTACGCTGCCATGGGGCAGGGCTGGTGCCACTGATCTTCACCACCCAGCAGT
CCCAGATGCTGCACCAGTCTGACAGCAGCAGGAGCTGAGTCCCTACACCCCTCCAAGAAGAGGAA
GCACTCTGAATCCCCCCCCAGCACCCCTCAATGCCAGATGCTGAATGGAATGATCAAACAGGAGCCTGGG
ACCGTGACAGCCCTGCCCTGCAACCCACTCGAGCCCCATCGCCACCCTGGCCTCCCAAGGTCCGCTCT
CCCCGGGCCCTGGTTCTTGCCTCTCAGCATTGCCCGTGTCCAGACACCGCCTTGGCACCCGCGAGTGC
CCCTCCCAAGGCTCCTGCAGGACAGTACAGCCTCAGTGGCTCCTACCTGGACCCCACTACAGTCC
ATCAAGTGGCAGCCTCATCAGCAGAACAAGTGGGCGACCTGTACGATGCTAACTACAAGGAGTGCCCA
TGCTCACCTACCGGTGGATGCGGACAAGGCTTCAACTTTTCGGTGGGCGACGACGCTTTGTGTGCCA
GAAGAAGAACCACTTCCAGGTGACAGTGTACATCGGCATGCTGGGCGAGCCCAAGTACGTCAAGACGCC
GAGGGCTCAAGCCCTCGACTGCTTCTATCTGAAGCTGCACGGAGTGAAGCTGGAGGCCCTGAACCAGT
CCATTAACATCGAGCAGTCCAGTCAAGCCGAGCAAGCGGCCCTTCAACCCGGTACGGTCAATCTGCC
CCCTGAGCAGTACGAAGGTGACTGTGGGGCGCTGCCTTACGCGAGACCACCGCTAACAAATCGCT



[View online »](#)

AAGAAGGGCAAGCCCAACCCGGACCAGAGGTACTTCATGCTGGTGGTGGCCCTCCAGGCTCATGCACAGA
ACCAGAATAACACGCTGGCCGCCAGATCTCAGAGCGCATCATTGTGCGGGCCTCCAACCCAGGCCAGTT
CGAGAGCGACAGCGATGTGTTGTGGCAGCGGGCACAGGTGCCCGACACCGTCTTCCACCACGGCCGCGTG
GGCATCAACACAGACCGGCCGGATGAGGCGCTGGTTGTGCACGGGAATGTCAAGGTATGGGCTCGTTA
TGCACCCCTCCGACCTGCGCGCCAAGGAACACGTGCAGGAGGTGGACACCACCGACAATTGAAGAGGAT
CTCGGCATGCGGCTGGTGCATACAGATAACAAGCCCGAGTTCGCCGCCAGCGCGGGCATCGAGGCCACC
GCGCCAGAGACAGGTGTATCGCTCAGGAGGTGAAGGAGATCTTGCCTGAGGCTGTGAAAGACACCGGAG
ACATGGTCTTTGCCAATGGGAAAACCATAGAGAACTTCTGGTGGTGAACAAGGAGCGCATCTTCATGGA
GAACGTAGGGGCCGTGAAGGAGCTGTGCAAGCTGACAGACAACCTGGAGACGCGCATTGATGAGCTGGAG
CGCTGGAGCCACAAGCTGGCCAAGCTGCGGCGGCTCGACAGCCTCAAGTCCACCGGCAGCTCGGGCGCCT
TCAGCCATGCAGGGAGCCAGTTCAGTGGGCGGGCAGCGTCCCCACAAGAAGAGGCCCCCAAGGTGGC
CAGCAAGTATCGTCCGTGGTCCGACCAGGCCATGCATCAGCCAGCGCTTCTGCAGGGAACCATCATT
GCCCTGGTGGTGCATGGCCTTACGCGTGGTGTCCATGTCCACACTGTACGTGCTGAGCCTGCGCACAG
AGGAGGACCTGGTAGACTGATGGCTCTTTGCCGTGCCACTTCTGTCTCTGGCCCTGCTCCGGCC
CCAGCCCTGGGGGAGTGAGGCTTGTGCCATGGTCCAGCCAGAGCTTTGGGACCACGAGCTCCGA
CAGTCCCCCTTGACCACGGGGTACCAGGCATACAGCCCTCTTGTCTGGTGGTACCACCGCCTACCA
GCTCGGCCCCAGTTCTGCTGTCCGCACCTGGACATGTGTTCCAGCCACCCCTGCCCTGTATCTGCTG
TTCTTACCCACTACCAACCCTACCACTGGTCTAGTCTTGGCCCGAGCTTAAACCTGGCCATGTTCTC
AGCCCAAGTCCCAGCCCCAGCACAACCCTCAGGCCCCAGCCAGATGGCCCTTCTGCCAGTCAACCAACA
TCAGAGCCAAGTCTGGGGTCTTTCAGTCAATGGCATTGGCCACTCCAAGCATCACAAGAGTCTGGAGCC
TCTGGCCAGCCCTGCAGTCCCCTCCCTGGGGGGCAGGGCAAAGCCAAGAAGTCCCAGCCTTGGTTTC
CATGGCCGGGCCCCGCGAGGGGCCCTCCAGTCCAGCGTGGGCCCTGCTGAGCCACCTGGGCCAGGGCC
AGTCAGCCTCTCTCCTTGCAGAGCCAGTCCCTCCCTGACCTCCATCCAGGTGCTGGAGAATTTCGATGTC
CATCACCTCCCAGTACTGTGCTCCAGGGGATGCCTGCAGGCCTGGGAATTCACCTACCACATCCCTGTC
AGTAGTGGCACCCCACTGCACCTCAGCCTGACTCTGCAGATGAACTCCTCCTCCCCGCTGTCTGTGGTGC
TGTGCAGCCTGAGGTCAAAGGAGGAACCATGTGAGGAGGGGAGCCTTCCACAGAGTCTCCACACCACCA
GGACACCAGGGCACCTCTACCGGTGGCCAATAACCATCCTGTCTTCCGTGAATTACCTACCACTTC
CGGGTGGCACTGCTGGTTCAGGCCAACTGCAGTTCAGAGGCTCTCGCCAGCCAGCCACAGACTACCACT
TCCACTTCTACCGCTGTGTGAC

ACGCGTACGCGGCCGCTCGAGCAGAACTCATCTCAGAAGAGGATCTGGCAGCAAATGATATCTGGATT
ACAAGGATGACGACGATAAGGTTTAA

Protein Sequence: >RC226344 representing NM_001127392
Red=Cloning site Green=Tags(s)

```
MEVVDETEALQRFFEGHDINGALEPSNIDTSILEEYISKEDASDLCFPDISAPASSASYSHGQPAMPGSS
GVHHLSPGGGSPGRHGPLPPPYGTPLNCCNNNGMGAAPKPPGGTGPPIKAEPKAPYAPGTLPDSP
DSGSEAYSPQQVNEPHLLRTITPETLCHVGVP SRLEHPPPPAHLPGPPPPPPPHYPVLQRDLYMKAE
PPIPHYAAMGQGLVPTDLHHTQQSQMLHQLLQQHGAELPTHPSKKRKHSESPSTLNAQMLNGMIKQEPG
TVTALPLHPTRAPSPPWPPQGPLSPGPGSLPLSIA RVQTPPWHPGAPSGLLQDSDLSGSYLDPNYQS
IKWQPHQQNKWATLYDANYKELPMLTYRVDADKGFNF SVGDADFVCQKKNHFQVTVYIGMLGEPKYVKT
EGLKPLDCFYKLKHGVKLEALNQSINIEQSQSDRSKRPFNPVTVNLPEQVTKVTVGRLHFSETTANMR
KKGKPNPDQRYFMLVVALQAHAQNQNYTLAAQISERII VRASNPGQFESDSDLVWQRAQVPDVFHHGRV
GINTDRPDEALVHGNVKVMGSLMHPSDLRAKEHVQEVDTT EQLKRI SRMRLVHYRYKPEFAASAGIEAT
APETGVIAQEVKEILPEAVKDTGDMVFANGKTIENFL VVNERIFMENVGAVKELCKLTDNLETRIDELE
RWSHLKAKLRRDLKSTGSSGAF SHAGSQFSRAGSVPHKKRPPK VASKSSVVPDQACISQRFLQGTII
ALVVVMAF SVVSMSTLYVLSLRTEEDLVDTDGSF AVSTSCLLALLRPQPPGGSEALCPWSSQSF GTTQLR
QSPFLTGLPGIQPSLLLVTSLTSSAPGSAVRTLDMCSSHPCPVICSSPTTNP TTPGSLGPSFNGHVL
SPSPSPSTNRSGPSQ MALLPVTNIRAKSWGLSVNGIGHSHKHSLEPLASPAVPFPGGQ GKAKNSPSLGF
HGRARRGALQSSVGA EPTWAQQQSASLLAEPVPSLTSIQVLENSMSITSQYCAPGDACRPNFTYHIPV
SSGTPLHLSLTLQMNSSSPVSVVLC SLRSKEEPCEEGLPQSLHHTQDTQGTSHRWPITILSFR EFTYHF
RVALLGQANCSEAL AQPATDYHFFHYRLCD
```

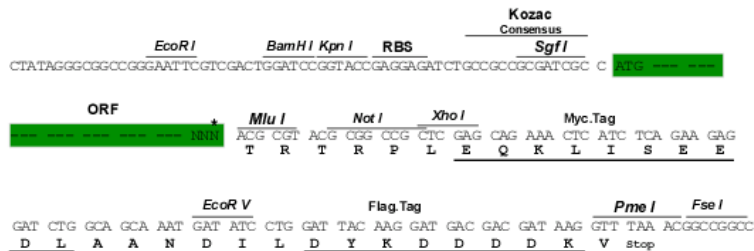
TRTRPLEQKLISEEDLAANDILDYKDDDDKV

Chromatograms: https://cdn.origene.com/chromatograms/mk8031_g02.zip

Restriction Sites: SgfI-MluI

Cloning Scheme:

Cloning sites used for ORF Shuttling:



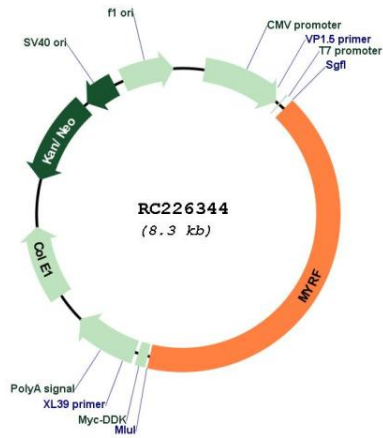
* The last codon before the Stop codon of the ORF

ACCN: NM_001127392

ORF Size: 3453 bp

OTI Disclaimer:	The molecular sequence of this clone aligns with the gene accession number as a point of reference only. However, individual transcript sequences of the same gene can differ through naturally occurring variations (e.g. polymorphisms), each with its own valid existence. This clone is substantially in agreement with the reference, but a complete review of all prevailing variants is recommended prior to use. More info
OTI Annotation:	This clone was engineered to express the complete ORF with an expression tag. Expression varies depending on the nature of the gene.
Components:	The ORF clone is ion-exchange column purified and shipped in a 2D barcoded Matrix tube containing 10ug of transfection-ready, dried plasmid DNA (reconstitute with 100 ul of water).
Reconstitution Method:	<ol style="list-style-type: none"> 1. Centrifuge at 5,000xg for 5min. 2. Carefully open the tube and add 100ul of sterile water to dissolve the DNA. 3. Close the tube and incubate for 10 minutes at room temperature. 4. Briefly vortex the tube and then do a quick spin (less than 5000xg) to concentrate the liquid at the bottom. 5. Store the suspended plasmid at -20°C. The DNA is stable for at least one year from date of shipping when stored at -20°C.
RefSeq:	NM_001127392.3
RefSeq ORF:	3456 bp
Locus ID:	745
UniProt ID:	Q9Y2G1
Cytogenetics:	11q12.2
MW:	124.2 kDa
Gene Summary:	This gene encodes a transcription factor that is required for central nervous system myelination and may regulate oligodendrocyte differentiation. It is thought to act by increasing the expression of genes that effect myelin production but may also directly promote myelin gene expression. Loss of a similar gene in mouse models results in severe demyelination. Alternative splicing results in multiple transcript variants. [provided by RefSeq, Nov 2014]

Product images:



Circular map for RC226344