

## Product datasheet for RC226338

### ARAP1 (NM\_001135190) Human Tagged ORF Clone

#### Product data:

Product Type: Expression Plasmids  
 Product Name: ARAP1 (NM\_001135190) Human Tagged ORF Clone  
 Tag: Myc-DDK  
 Symbol: ARAP1  
 Synonyms: CENTD2  
 Vector: pCMV6-Entry (PS100001)  
 E. coli Selection: Kanamycin (25 ug/mL)  
 Cell Selection: Neomycin  
 ORF Nucleotide Sequence: >RC226338 representing NM\_001135190  
 Red=Cloning site Blue=ORF Green=Tags(s)

TTTTGTAATACGACTCACTATAGGGCGGCCGGGAATTCGTCGACTGGATCCGGTACCGAGGAGATCTGCC  
 GCCGGATCGC

ATGACCAAGAAGGAGGAGCCCCACCGAGCCGAGTCCCACGGGCCGTGCGCGTGGCCAGTCTGCTGAGCG  
 AGGGAGAGGAAGTGTCTGGGACGACCAAGGGGATGAGGAAGAGGATGACCACGCCTATGAGGGCGTCCC  
 CAATGGCGGATGGCATAACCAGCAGCCTGAGCTTGTCTTCCCCAGCACAATAGCTGCGCCACACCCCATG  
 GACGGGCGCCTGGGGGCTCCACCCCGTCACACCAGTCAAGGCTGGCTGGCTGGACAAGAACCAC  
 CGCAGGGATCTTACATCTATCAGAAACGATGGGTGAGACTGGATACTGATCACCTGCGATACTTTGACAG  
 TAACAAGGACGCTTACTCTAAGCGCTTTATCTCTGTGGCCTGCATCTCCACGTGGCTGCCATCGGGGAC  
 CAGAAGTTTGAAGTGATCACAACAACCGAACCTTTGCCTTCCGGGCAGAGAGTGATGTGGAGCGGAAGG  
 AGTGGATGCAGGCCCTGCAGCAGGCCATGGCTGAGCAGCGTCCCCGGGCCGGCTCTCTAGCGTTATCT  
 GCTGGGAGTCCAGGCTCAGAGCAGCCTGACCGCGTGGCAGCCTGGAGCTTCGTGGCTCAAGAATAAG  
 CTGTACGTGGCGTGGTCGGGACAAAGTGCAGCTCTACAAGAATCTAGAGGAGTACCACCTGGGCATTG  
 GCATCACCTTTCATCGACATGAGCGTGGGCAACGTGAAGGAAGTGGACCGCGCAGCTTCGACCTACCCAC  
 GCCCTACCGCATCTTCAGCTTCTGCTGACTCAGAGCTAGAGAAGGAGCAGTGGTTGGAGGCCATGCAG  
 GGAGCCATCGCTGAGGCCCTGTCTACCTCGGAGGTGGCCGAGCGCATCTGGGCTGCAGCCCCAACAGGT  
 TCTGTGCTGACTGCGGGGCTCCTCAGCCTGACTGGGCCTCCATCAACCTCTGTGTTGTTATCTGCAAGCG  
 CTGTGCAGGGGAGCACCGTGGCCTGGGCGTGGCGTCTCCAAGGTGCGGAGCCTGAAGATGGACAGGAAG  
 GTGTGGACAGAAACACTTATCGAGGCCCTGTGTGCTGCAGTACCACCACAGACCTGGCTGAGACCCAGG  
 CGCTCCTGGGCTGTGGGCTGGGATCAACTGCTTCTCGGGGACCCTGAGGCCCCACGCCCTGGCTCT  
 TGCAGAGCAGGCGGGCAGACGCTGCAGATGGAATTCCTCGGAACAACCGACCACAGAGGTGCCTCGG  
 CTGGACTCGATGAAGCCCTGGAAAAGCACTACTCAGTTGTCTGCCGACCGTGAGCCACAGTGGCTTCC  
 TCTACAAGACTGCCTCTGCCGGCAAGCTGCTACAGGACCGCCGGCCCGGAAGAGTTACGCCGGCGCTG  
 GTGTGCTTGGTGACGGGGTCTGAGCTACTTTGAGAATGAGCGGGCAGTGACCCCAATGGAGAGATT  
 CGGGCCAGCGAGATTGTGTGCCTGGCAGTGCCCTCCTGACCCCATGGCTTTGAGCACACCTTTGAGG



TGTACACGGAGGGAGAACGGCTGTACCTGTTTGGGCTGGAGAGTGC GGAGCAGGCTCATGAGTGGGTCAA  
 GTGATTGCTAAGGCATTCTGCCTCCCTAGCCGAGGATCTGCTGGCCCGGATTTTGAGCGGCTGGGA  
 CGCCTACCCTACAAGCTGGCCTGAGCCTACAGCGGGCCAGGAGGGCTGGTCTCTCTCAGTGGCTCGG  
 AGCTCCGTGCTGTCTCCCGGAGGGGCCCTGCGAAGAGCCGCTGCAACTACGAAACTGCAGGAGCTTTC  
 CATCCAGGGGACAGTGAGAACCAGGTGCTGGTGGTGGTGGAGCGAAGGAGGACACTGTACATACAGGGC  
 GAGCGGGCTGGACTTCATGGGTTGGCTGGGGCCATCCAGAAAGCAGCCGCCAGCATGGGGACACCG  
 TGTCCGAGCAGCAGCTTGGGACTCGGATATCCCGGTGATCGTGTACCGCTGTGTGGACTACATACGCA  
 GTGCGGCTGACCTCCGAGGGCATCTACCGCAAGTGTGGCAGACATCGAAGACACAGCGGCTGCTGGAG  
 AGCCTGCGGCAGGATGCGCGCTCTGTGCACCTCAAGGAGGGCAGCAGCAGTGGATGATGTTTCTCGG  
 CGCTCAAGCGCTTCTGCGGACCTGCCTGATGGGCTCTTCACTCGCGCCAGCGCTAACCTGGCTGGA  
 GGCCTCAGAGATTGAGGACGAGGAGGAGAAGGTCTCCAGGTACCGAGAGCTGCTGGTGGGCTGCCCCCT  
 GTCAACCGGGCCACAGTGAAGGCCCTTATCAGCCACCTGTACTGTGTTCACTGCTTCTCAGACACGAACC  
 AGATGAACGTGCACAACCTGGCAATTGTGTTTGGGCCACGCTTCCAGACAGATGGCAGGACTACAA  
 GGCTGGCCGTGTTGGTGAAGACCTCATAAACCCTATGTGGTGGTGTGTTAGTGTGGATGAGGAAGAGCTC  
 AGGAAGCAGCGGAGGAGATCACTGCCATTGTGAAGATGCGCGTGGCTGGCACTGCCAGTGGGACCCAGC  
 ATGCGCGTGACTTCATCTGCACAGTGTATCTGGAAGAGAAGAAGGCAGAGACTGAGCAGCATATCAAGGT  
 CCCAGCATCCATGACTGCTGAGGAGCTCACCTGGAGATCCTGGATCGCCGGAACGTGGGCATCAGGGAG  
 AAGACTATTGGACCTGCTTTGAGGTCAACGAGAGGGAGGAGGCAGAGCGCCCTGCACTTTGCGGAGA  
 AGGTGCTGCCATCCTGCACGGGCTGGGCACGGACAGCCACCTGGTGGTGAAGAAGCACCAGGCCATGGA  
 GGCCATGCTGCTGTACCTGGCCAGCCGTGTCGGTGACACCAAGCATGGCATGATGAAGTCCGTGAGGAC  
 CGCAGCCTCCTGGGCTGGGCTGCCCTCAGGTGGCTTCCAGCATCGCTACTTCACTCAACAGCAGCT  
 GCTTGGGCTCTACAAGGAGTCCGGAGTCAACCGGCTGAGAAGGAGTGGCTATTAAGAGTCTCAAAGT  
 CTACCTGGGAGTGAAGAAGAACTCAGGCCACCCACCTGCTGGGCTTACAGTGGTGCATGAGACAGAG  
 AAACATGAGAAGCAGCAGTGGTACCTCTGCTGTGACACACAGATGGAGCTCCGGGAGTGGTTTCGCTACCT  
 TTCTGTTTGTGCAGCATGACGGCCTGGTGTGGCCCTCAGAGCCCTCACGCGTGTCCCGGGCAGTGCCTGA  
 GGTCCGGCTGGGTAGTGTGCTACTGATCCCCCTTCGAGGTAGTAAAATGAAATGCGCCGGAGTGTGGCT  
 GCCTTACC GCGGACCCTCTGTCTTTCTGCGCAACGTC

AGCGGACCGACGCGTACGCGGCCGCTCGAGCAGAAACTCATCTCAGAAGAGGATCTGGCAGCAAATGATATCC  
 TGGATTACAAGGATGACGACGATAAGGTTTAA

**Protein Sequence:**

>RC226338 representing NM\_001135190  
 Red=Cloning site Green=Tags(s)

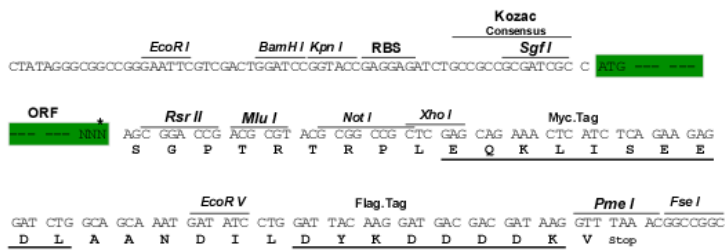
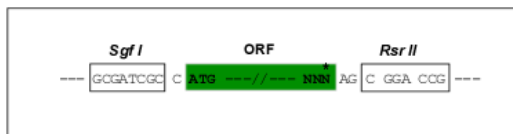
MTKKEPPPSRVPRAVRVASLLSEGEELSGDDQGDDEEDDHAYEGVPNGGWHTSSL SLSLPSTIAAPHPM  
 DGPPGGSTPVPVIKAGWLDKNPPQGSYIYQKRWRVRLTDHLRYFDSNKNDAYSKRFISVACISHVA AIGD  
 QKFEVITNNRTFAFRAESDVERKEWMQALQQAMAEQRARARLSSAYLLGVPGSEQPDRA GLELRGFKNK  
 LYVAVVGDVKVQLYKNLEEYHLGIGITFIDMSVGNVKEVDRRSFDLTTPYRIFSFSA DSELEKEQWLEAMQ  
 GAIAEALSTSEVAERIWAAPNRF CADCGAPQPDWASINLCVVICRKCAGEHRGLGAGVSKVRSLKMDRK  
 WWTETLIEALCAAVTTTDLAETQALLGCGAGINCFSGDPEAPTPLALAEQAGQTLQMEFLRNNRTTEVPR  
 LDSMIPLEKHYSVVLPTVSHSGFLYKTASAGKLLQDRRAREEF SRRWCVLGDGVL SYFENERAVTPNGEI  
 RASEIVCLAVPPPDTGHFEHTFEVYTEGERLYLFGLESAEQAH EWVKCIAKAFVPP LAEDLLARDFERLG  
 RLPYKAGLSLQRAQEGWFSLSGSELRAVFPEGPCEEPLQLRKLQELSIQGDSENQVLV LVERRRTLYIQG  
 ERRLDFMGWLGAIQKAAASMGDTLSEQQLGSDIPVIVYRCVDYITQCGLTSEGIYRKC GQTSKTQRLL E  
 SLRQDARSVHLKEGEQHVDVSSALKRFLRDL PDGLFTRAQRLTWLEASEIEDEEEKVSR YRELLVRLPP  
 VNRATVKALISHLYCVQCFSDTNQMNVHNLAI VFGPTLFTQDGDYKAGR VVEDLINHYVVVFSVDEEEL  
 RKQREEITAIIVKMRVAGTASGTQHAGDFICTVYLEEKKAETE QHIKVPASMTAEELTLEILD RRNVGIRE  
 KDYWTCFEVNEREEAERPLHFAEKVLPILHGLGTD SHLVVKKHQAMEAMLLYLASRVGDTKHGM MFRED  
 RSLGLGLPSGGFHDRYFILNSSCLRLYKEVRSRPEKEWPIKSLKVYLVGKKLRPPTCWGFTVVHETE  
 KHEKQWYLC CDTQMELREWFATFLFVQHDGLVWPSEPSRVSRAVPEVRLGSVSLIPLRGSENMRRSVA  
 AFTADPLSLLRNV

SGPTRRRL EQKLISEEDLAANDILDYKDDDDKV

Restriction Sites: SgfI-RsrII

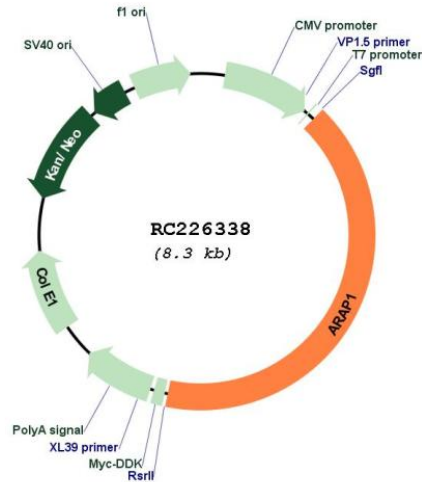
Cloning Scheme:

Cloning sites used for ORF Shuttling:



\* The last codon before the Stop codon of the ORF

## Plasmid Map:



ACCN: NM\_001135190

ORF Size: 3399 bp

OTI Disclaimer: The molecular sequence of this clone aligns with the gene accession number as a point of reference only. However, individual transcript sequences of the same gene can differ through naturally occurring variations (e.g. polymorphisms), each with its own valid existence. This clone is substantially in agreement with the reference, but a complete review of all prevailing variants is recommended prior to use. [More info](#)

OTI Annotation: This clone was engineered to express the complete ORF with an expression tag. Expression varies depending on the nature of the gene.

Components: The ORF clone is ion-exchange column purified and shipped in a 2D barcoded Matrix tube containing 10ug of transfection-ready, dried plasmid DNA (reconstitute with 100 ul of water).

Reconstitution Method:

1. Centrifuge at 5,000xg for 5min.
2. Carefully open the tube and add 100ul of sterile water to dissolve the DNA.
3. Close the tube and incubate for 10 minutes at room temperature.
4. Briefly vortex the tube and then do a quick spin (less than 5000xg) to concentrate the liquid at the bottom.
5. Store the suspended plasmid at -20°C. The DNA is stable for at least one year from date of shipping when stored at -20°C.

RefSeq: [NM\\_001135190.1](#), [NP\\_001128662.1](#)

RefSeq ORF: 3402 bp

Locus ID: 116985

UniProt ID: [Q96P48](#)

Cytogenetics: 11q13.4

Protein Pathways: Endocytosis

**MW:** 127.5 kDa

**Gene Summary:** The protein encoded by this gene contains SAM, ARF-GAP, RHO-GAP, ankyrin repeat, RAS-associating, and pleckstrin homology (PH) domains. In vitro, this protein displays RHO-GAP and phosphatidylinositol (3,4,5) trisphosphate (PIP3)-dependent ARF-GAP activity. The encoded protein associates with the Golgi, and the ARF-GAP activity mediates changes in the Golgi and the formation of filopodia. It is thought to regulate the cell-specific trafficking of a receptor protein involved in apoptosis. Multiple transcript variants encoding different isoforms have been found for this gene. [provided by RefSeq, Sep 2008]