

Product datasheet for RC226337

USP8 (NM_001128611) Human Tagged ORF Clone

Product data:

Product Type:	Expression Plasmids
Product Name:	USP8 (NM_001128611) Human Tagged ORF Clone
Tag:	Myc-DDK
Symbol:	USP8
Synonyms:	HumORF8; UBPY
Mammalian Cell Selection:	Neomycin
Vector:	pCMV6-Entry (PS100001)
E. coli Selection:	Kanamycin (25 ug/mL)
ORF Nucleotide Sequence:	>RC226337 representing NM_001128611 Red=Cloning site Blue=ORF Green=Tags(s)

TTTTGTAATACGACTCACTATAGGGCGGCCGGAATTCGTCGACTGGATCCGGTACCGAGGAGATCTGCC
GCC**CGATCGCC**

ATGCTGTGGCTTCAGTTCCTAAAGAACTCTACCTCAGTTCCTCACTAAAAGACCTTAATAAGAAGA
CAGAAGTTAAACCAGAGAAAATAAGCACTAAGAGTTATGTGCACAGTGCCTGAAGATCTTTAAGACAGC
AGAAGAATGCAGATTAGATCGTGATGAGGAAAGGGCTATGTACTATATGAAATACGTGACTGTTTAT
AATCTTATCAAAAAAGACCTGATTTCAAGCAACAGCAGGATTATTTCCATTCAACTTGGACCTGGAA
ACATCAAAAAAGCTGTCGAAGAAGCTGAAAGACTCTCTGAAAGCCTTAAATTAAGATATGAAGAAGCTGA
AGTCCGAAAAAAGCTTGAGGAAAAAGACAGGCAGGAGGAAGCACAGCGGCTACAACAAAAAGGCAGGAA
ACAGGAAGAGAGGATGGTGGCACATTGGCTAAAGGCTCTTTGGAGAATGTTTTGGATTCCAAGACAAAA
CCCAAAAGAGCAATGGTAAAAGAATGAAAAATGTGAGACCAAAGAGAAAGGAGCAATCACAGCAAAGGA
ACTATACAAATGATGACGGATAAAAACATCAGCTTGATTATAATGGATGCTCGAAGAATGCAGGATTAT
CAGGATTCCTGTATTTTACATTCCTCAGTGTTCCTGAAGAAGCCATCAGTCCAGGAGTCACTGCTAGTT
GGATTGAAGCACACCTGCCAGATGATTCTAAAGACACATGGAAGAAGAGGGGGAATGTGGAGTATGTGGT
ACTTCTTGACTGGTTTAGTTCTGCCAAAGATTTACAGATTGGAACAACCTCCGGAGTCTGAAAGATGCA
CTTTTCAAGTGGAAAGTAAAAGTGTCTGCGCAATGAGCCTTTTGGTTTTAGAGGGAGGCTATGAAAAC
GGCTCCTTTGTTATCCCCAGTATACAACAAATGCTAAGGTCACTCCACCCACGACGCCAGAATGAAGA
GGTGTCTATCTATTGGATTTTACTTATCCCTCATTGGAAGAATCAATTCCTTCTAAACCTGCTGCCAG
ACGCCACCTGCATCTATAGAAGTAGATGAAAATATAGAATTGATAAGTGGTCAAAATGAGAGAATGGGAC
CACTGAATATCAACTCCAGTTGAACCAAGTGTCTGCTTCTAAATCTGATGTTTCAACCCATAATTCAGCC
AGTGCCTAGTATAAAGAATGTTCCACAGATTGATCGTACTAAAAAACCAGCAGTCAAATTCCTGAAGAG
CATAGAATAAAAATCTGAAAGTACAAACCATGAGCAACAATCTCCTCAGAGTGAAAAAGTTATTCCTGATC
GTTCCACCAAGCCAGTAGTTTTTCTCCAACCTCATGTTAACAGATGAAGAAAAGGCTCGTATTTCATGC
AGAAACTGCTCTTCTAATGGAAAAAACAACAAGAAAAAGAACTTCGGGAAAGGCAGCAAGAGGAACAG



[View online »](#)

AAAGAGAACTGAGGAAGGAAGAACAAGAACAAAAAGCCAAAAAGAAACAAGAAGCTGAAGAAAATGAAA
 TTACAGAGAAGCAACAAAAAGCAAAAAGAAGAAATGGAGAAGAAAGAAAGTGAACAGGCCAAGAAAGAAGA
 TAAAGAAACCTCAGCAAAAGAGGGGCAAAGAAATAACAGGAGTAAAAAGACAAAGTAAAAGTGAACATGAA
 ACTTCTGATGCCAAGAAATCTGTAGAAGATAGGGGGAAAAGGTGTCCAACCCAGAAATACAGAAAAAGT
 CAACAGGAGATGTGCCCCATACATCTGTGACAGGGGATTCAGGTTACAGCAAGCCATTTAAGATTAAGG
 ACAACCCAGAAAGTGAATTTAAGGACAGGAACTTTTAGAGAGGATACAGACGATACCCGAAAGAAATAAA
 GCTCAACGAGAACCCTTTGACAAGAGCACGAAGTGAAGAAATGGGGAGGATCGTACCAGACTGCCTTCAG
 GCTGGGCCAAGTTTCTTGACCCAATCACTGGAACCTTTGTTATTATCATTACCCACCAACTGTTCA
 TATGTACCCACCGAAATGGCTCCTTCTGTGACCTCCTTCCACCCCTCCAACCTATAAAGCCAAGCCA
 CAGATTCCTGCTGAGCGGGATAGGGAACCTTCCAACTGAAGCGCTCCTACTCCTCCCAGATATAACCC
 AGGCTATTCAAGAGGAAGAGAAGAGGAAGCCAACAGTAACTCCAACAGTTAATCGGGAAAACAAGCCAAC
 ATGTTATCCTAAAGCTGAGATCTCAAGGCTTTCTGCTTCTCAGATTTCGGAACCTCAATCTGTTTTTGA
 GGTTCGGACCAGCTCTTACTGGACTTCGTAACCTAGGAAATACTGTTATATGAACTCAATATTGCAGT
 GCCTATGTAACGCTCCACATTTGGCTGATTATTTCAACCGAAACTGTTATCAGGATGATATTAACAGGTC
 AAATTTGTTGGGCATAAAGGTGAAGTGGCAGAAGAATTTGGTATAATCATGAAAGCCCTGTGGACAGGA
 CAGTATAGATATATCAGTCCAAAGGACTTTAAAATCACCATTGGGAAGATCAATGACCAGTTTGCAGGAT
 ACAGTCAGCAAGATTCACAAGAATTGCTTCTGTTCTTAATGGATGGTCTCCATGAAGATCTAAATAAAGC
 TGATAATCGGAAGAGATATAAAGAAGAAAATAATGATCATCTCGATGACTTTAAAGCTGCAGAACATGCC
 TGGCAGAAACACAAGCAGCTCAATGAGTCTATTATTGTTGCATTTTTTCAGGGTCAATTCAAATCTACAG
 TACAGTGCCTCACATGTCACAAAAGTCTAGGACATTTGAGGCCTTCATGATTTTGTCTCTACCCTAGC
 ATCCACAAGTAAATGTACATTACAGGATTGCCTTAGATTATTTTCAAAGAAGAAAAACTCACAGATAAC
 AACAGATTTTACTGCAGTATTGCAGAGCTCGACGGGATTCCTCTAAAAAGATAGAAATTCGGAAGTTAC
 CACTGTGCTTTTGTGATCTGAAACGTTTTTCTACGATGGCAGGTGGAAACAAAAATACAGACATC
 TGTGGACTTCCCGTTAGAAAATCTTGACTTGTACAGTATGTTATTGGTCCAAAGAACAATTTGAAGAAA
 TATAATTTGTTTTCTGTTTCAAATCACTACGGTGGCTGGATGGAGGCCACTACACAGCCTATTGAAAA
 ATGCAGCAAGACAACGGTGGTTAAGTTTGATGATCATGAAGTTTCTGATATCTCCGTTTCTTGTGAA
 ATCTTCAGCAGCTTATATCTCTTTTATACTTCATTGGGACCACGAGTAACTGATGTAGCCACA

ACGCGTACGCGGCCGCTCGAGCAGAAACTCATCTCAGAAGAGGATCTGGCAGCAATGATATCCTGGATT
 ACAAGGATGACGACGATAAGGTTTAA

Protein Sequence:

>RC226337 representing NM_001128611
 Red=Cloning site Green=Tags(s)

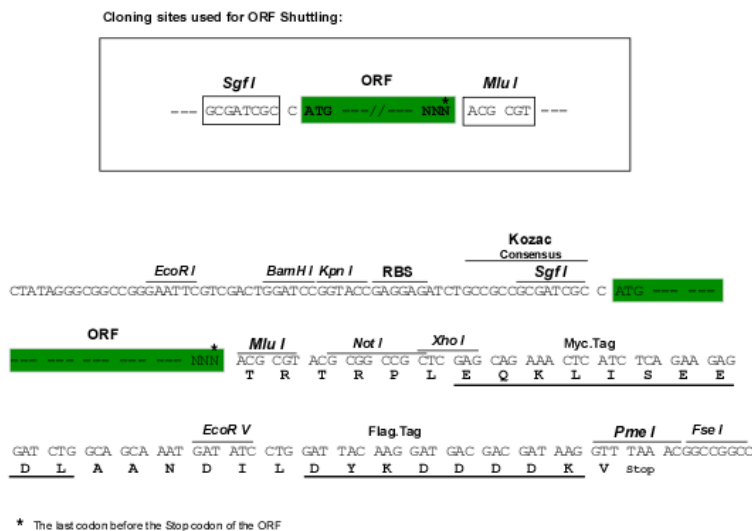
MPAVASVPKELYLSSSLKDLNKKTEVKEPEKISTKSYVHSALKIFKTAEECRDRDEERAYVLYMKYVTVY
 NLIKKRPDFKQQDYFHSILGPGNIKKAVEEAERLSESLKLYEEAEVRKKLEEKDRQEEAQLQQRQE
 TGREDGGTLAKGSLENVLDSKDKTQKSNGEKNEKCEKKEGAIKELYMMTDKNISLIIMDARRMQDY
 QDSCILHSLVPEEASISPGVTASWIEAHLPPDSKDTWKKRGNVEYVLLDWFSSAKDLQIGTTLRSLKDA
 LFKWESKTVLRNEPLVLEGGYENWLLCYPQYTTNAKVTPPPRRQNEEVSISLDFTYPSLEESIPSKPAAQ
 TPPASIEVDENIELISGQNERMGPLNISTPVEPVAASKSDVSPIIQPVPSIKNVPQIDRTKPKAVKLPEE
 HRIKSESTNHQQSPQSGKVIPDRSTKPVVFSPTLMLTDEEKARIHAETALLMEKNKQEKELRERQEEQ
 KEKLRKEEQEQAKKKQEAENEITEKQKAKEEMEKKESEQAKKEDKETSAKRGEITGVKRQSKSEHE
 TSDAKKSVEDRGKRCPTPEIQKSTGDVPHTSVTGDGSGKPFKIKGQPESGILRTGTFREDTDDTERNK
 AQREPLTRARSEEMGRIVPLPSGWAKFLDPIGTFRYYHSPTNTVHMYPPEMAPSSAPPSTPPTHKAKP
 QIPAERDREPSKLRYSYSPDITQAIQEEERKPTVPTVNRNKPCTCYPKAEISRLSASQIRNLPVFG
 GSGPALTGLRNLGNTCYMNSILQCLCNAPHLADYFNRCYQDDINRSNLLGHKGEVAEEFGIIMKALWTG
 QYRISPKDFKITIGKINDQFAGYSQQEQLLFLMDGLHEDLNKADNRKRYKEENNDHDDFKAAEHA
 WQKHKQLNESIIIVALFQGQFKSTVQCLTCHKKSRTFEAFMYLSLPLASTSKCTLQDCLRLFSSKEEKLTDN
 NRFYCSHCRARRDSLKKIEIWKLPVLLVHLKRFSDYDGRWKQLQTSVDFPLENLDLSQYVIGPKNNLKK
 YNLFVSNHYGGLDGGHYTAYCKNAARQRWFKFDDHEVSDISVSSVKSSAAYILFYTSLGPRVTDVAT

TRTRPLEQKLISEEDLAANDILDYKDDDDKV

Chromatograms: https://cdn.origene.com/chromatograms/mg2901_a09.zip

Restriction Sites: SgfI-MluI

Cloning Scheme:



ACCN: NM_001128611

ORF Size: 3354 bp

OTI Disclaimer: The molecular sequence of this clone aligns with the gene accession number as a point of reference only. However, individual transcript sequences of the same gene can differ through naturally occurring variations (e.g. polymorphisms), each with its own valid existence. This clone is substantially in agreement with the reference, but a complete review of all prevailing variants is recommended prior to use. [More info](#)

OTI Annotation: This clone was engineered to express the complete ORF with an expression tag. Expression varies depending on the nature of the gene.

Components: The ORF clone is ion-exchange column purified and shipped in a 2D barcoded Matrix tube containing 10ug of transfection-ready, dried plasmid DNA (reconstitute with 100 ul of water).

- Reconstitution Method:**
1. Centrifuge at 5,000xg for 5min.
 2. Carefully open the tube and add 100ul of sterile water to dissolve the DNA.
 3. Close the tube and incubate for 10 minutes at room temperature.
 4. Briefly vortex the tube and then do a quick spin (less than 5000xg) to concentrate the liquid at the bottom.
 5. Store the suspended plasmid at -20°C. The DNA is stable for at least one year from date of shipping when stored at -20°C.

RefSeq: [NM_001128611.1](#), [NP_001122083.1](#)

RefSeq ORF: 3356 bp

Locus ID: 9101

Cytogenetics: 15q21.2

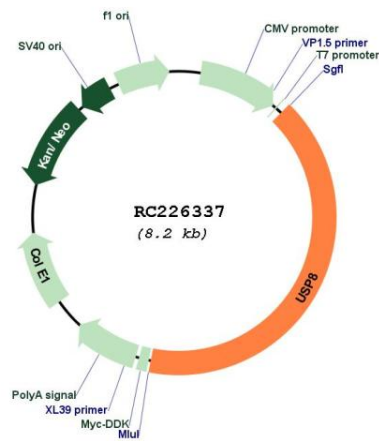
Protein Families: Druggable Genome, Protease

Protein Pathways: Endocytosis

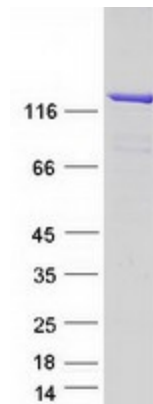
MW: 127.3 kDa

Gene Summary: This gene encodes a protein that belongs to the ubiquitin-specific processing protease family of proteins. The encoded protein is thought to regulate the morphology of the endosome by ubiquitination of proteins on this organelle and is involved in cargo sorting and membrane trafficking at the early endosome stage. This protein is required for the cell to enter the S phase of the cell cycle and also functions as a positive regulator in the Hedgehog signaling pathway in development. Pseudogenes of this gene are present on chromosomes 2 and 6. Alternate splicing results in multiple transcript variants. [provided by RefSeq, Sep 2013]

Product images:



Circular map for RC226337



Coomassie blue staining of purified USP8 protein (Cat# [TP326337]). The protein was produced from HEK293T cells transfected with USP8 cDNA clone (Cat# RC226337) using MegaTran 2.0 (Cat# [TT210002]).