

Product datasheet for RC226336

USP8 (NM_001128610) Human Tagged ORF Clone

Product data:

Product Type:	Expression Plasmids
Product Name:	USP8 (NM_001128610) Human Tagged ORF Clone
Tag:	Myc-DDK
Symbol:	USP8
Synonyms:	HumORF8; PITA4; SPG59; UBPY
Mammalian Cell Selection:	Neomycin
Vector:	pCMV6-Entry (PS100001)
E. coli Selection:	Kanamycin (25 ug/mL)
ORF Nucleotide Sequence:	>RC226336 representing NM_001128610 Red=Cloning site Blue=ORF Green=Tags(s)

TTTTGTAATACGACTCACTATAGGGCGGCCGGAATTCGTCGACTGGATCCGGTACCGAGGAGATCTGCC
GCC**CGATCGCC**

ATGCTGTGGCTTCAGTTCCTAAAGAACTCTACCTCAGTTCCTCACTAAAAGACCTTAATAAGAAGA
CAGAAGTTAAACCAGAGAAAATAAGCACTAAGAGTTATGTGCACAGTGCCTGAAGATCTTTAAGACAGC
AGAAGAATGCAGATTAGATCGTGATGAGGAAAGGGCTATGACTATATGAAATACGTGACTGTTTAT
AATCTTATCAAAAAAGACCTGATTTCAAGCAACAGCAGGATTATTTCCATTCAACTTGGACCTGGAA
ACATCAAAAAAGCTGTCGAAGAAGCTGAAAGACTCTCTGAAAGCCTTAAATTAAGATATGAAGAAGCTGA
AGTCCGAAAAAACTTGAGGAAAAAGACAGGCAGGAGGAAGCACAGCGGCTACAACAAAAAGGCAGGAA
ACAGGAAGAGAGGATGGTGGCACATTGGCTAAAGGCTCTTTGGAGAATGTTTTGGATTCCAAGACAAAA
CCCAAAAGAGCAATGGTAAAAGAATGAAAAATGTGAGACCAAAGAGAAAGGAGCAATCACAGCAAAGGA
ACTATACAAATGATGACGGATAAAAACATCAGCTTGATTATAATGGATGCTCGAAGAATGCAGGATTAT
CAGGATTCCTGTATTTTACATTCCTCAGTGTTCCTGAAGAAGCCATCAGTCCAGGAGTCACTGCTAGTT
GGATTGAAGCACACCTGCCAGATGATTCTAAAGACACATGGAAGAAGAGGGGGAATGTGGAGTATGTGGT
ACTTCTTGACTGGTTTAGTTCTGCCAAAGATTTACAGATTGGAACAACCTCCGGAGTCTGAAAGATGCA
CTTTTCAAGTGGAAAGTAAAAGTGTCTGCGCAATGAGCCTTTGGTTTTAGAGGGAGGCTATGAAAAC
GGCTCCTTTGTTATCCCCAGTATACAACAAATGCTAAGGTCACCTCACCCACGACGCCAGAATGAAGA
GGTGTCTATCTATTGGATTTTACTTATCCCTCATTGGAAGAATCAATTCCTTCTAAACCTGCTGCCAG
ACGCCACCTGCATCTATAGAAGTAGATGAAAATATAGAATTGATAAGTGGTCAAAATGAGAGAATGGGAC
CACTGAATATCAACTCCAGTTGAACCAAGTGTGCTGCTTCTAAATCTGATGTTTACCCATAATTCAGCC
AGTGCCTAGTATAAAGAATGTTCCACAGATTGATCGTACTAAAAAACCAGCAGTCAAATTCCTGAAGAG
CATAGAATAAAATCTGAAAGTACAAACCATGAGCAACAATCTCCTCAGAGTGAAAAAGTTATTCCTGATC
GTTCCACCAAGCCAGTAGTTTTTCTCCAACCTCATGTTAACAGATGAAGAAAAGGCTCGTATTATGTC
AGAAACTGCTCTTCTAATGGAAAAAACAAACAAGAAAAAGAACTTCGGGAAAGGCAGCAAGAGGAACAG



[View online »](#)

AAAGAGAACTGAGGAAGGAAGAACAAGAACAAAAAGCCAAAAAGAAACAAGAAGCTGAAGAAAATGAAA
 TTACAGAGAAGCAACAAAAAGCAAAAAGAAGAAATGGAGAAGAAAGAAAGTGAACAGGCCAAGAAAGAAGA
 TAAAGAAACCTCAGCAAAAGAGGGGCAAAGAAATAACAGGAGTAAAAAGACAAAGTAAAAGTGAACATGAA
 ACTTCTGATGCCAAGAAATCTGTAGAAGATAGGGGGAAAAGGTGTCCAACCCAGAAATACAGAAAAAGT
 CAACAGGAGATGTGCCCCATACATCTGTGACAGGGGATTCAGGTTACAGCAAGCCATTTAAGATTAAGG
 ACAACCCAGAAAGTGAATTCTAAGGACAGGAACTTTTAGAGAGGATACAGACGATACCCGAAAGAAATAAA
 GCTCAACGAGAACCTTTGACAAGAGCACGAAGTGAAGAAATGGGGAGGATCGTACCAGACTGCCTTCAG
 GCTGGGCCAAGTTTCTTGACCCAATCACTGGAACCTTTGTTATTATCATTACCCACCAACTGTTCA
 TATGTACCCACCGAAATGGCTCCTTCTGTGACCTCCTTCCACCCCTCCAACCTATAAAGCCAAGCCA
 CAGATTCTGCTGAGCGGGATAGGGAACCTTCCAACTGAAGCGCTCCTACTCCTCCCAGATATAACCC
 AGGCTATTCAAGAGGAAGAGAAGAGGAAGCCAACAGTAACTCCAACAGTTAATCGGGAAAACAAGCCAAC
 ATGTTATCTAAAGCTGAGATCTCAAGGCTTTCTGCTTCTCAGATTTCGGAACCTCAATCTGTTTTTGA
 GGTTCGGACCAGCTCTTACTGGACTTCGTAACCTAGGAAATACTGTTATATGAACTCAATATTGCAGT
 GCCTATGTAACGCTCCACATTTGGCTGATTATTTCAACCGAAACTGTTATCAGGATGATATTAACAGGTC
 AAATTTGTTGGGCATAAAGGTGAAGTGGCAGAAGAATTTGGTATAATCATGAAAGCCCTGTGGACAGGA
 CAGTATAGATATATCAGTCCAAAGGACTTTAAAATCACCATTGGGAAGATCAATGACCAGTTTGCAGGAT
 ACAGTCAGCAAGATTCACAAGAATTGCTTCTGTTCTTAATGGATGGTCTCCATGAAGATCTAAATAAAGC
 TGATAATCGGAAGAGATATAAAGAAGAAAATAATGATCATCTCGATGACTTTAAAGCTGCAGAACATGCC
 TGGCAGAAACACAAGCAGCTCAATGAGTCTATTATTGTTGCACTTTTTCAGGGTCAATTCAAATCTACAG
 TACAGTGCCTCACATGTCACAAAAGTCTAGGACATTTGAGGCCTTCATGATTTTGTCTCTACCACTAGC
 ATCCACAAGTAAATGTACATTACAGGATTGCCTTAGATTATTTTCAAAGAAGAAAAACTCACAGATAAC
 AACAGATTTTACTGCAGTATTGCAGAGCTCGACGGGATTCCTCTAAAAAGATAGAAATCTGGAAGTTAC
 CACCTGTGCTTTTGTGATCTGAAACGTTTTTCTACGATGGCAGGTGGAAACAAAAATACAGACATC
 TGTGGACTTCCCGTTAGAAAATCTTGACTTGTACAGTATGTTATTGGTCCAAAGAACAATTTGAAGAAA
 TATAATTTGTTTTCTGTTTCAAATCACTACGGTGGCTGGATGGAGGCCACTACACAGCCTATTGTA
 ATGCAGCAAGACAACGGTGGTTTAAAGTTTATGATCATGAAGTTTCTGATATCTCCGTTTCTTGTGAA
 ATCTTCAGCAGCTTATATCTCTTTTATACTTCATTGGGACCACGAGTAACTGATGTAGCCACA

ACGCGTACGCGGCCGCTCGAGCAGAAACTCATCTCAGAAGAGGATCTGGCAGCAATGATATCCTGGATT
 ACAAGGATGACGACGATAAGGTTTAA

Protein Sequence:

>RC226336 representing NM_001128610
 Red=Cloning site Green=Tags(s)

MPAVASVPKELYLSSSLKDLNKKTEVKEPKISTKSYVHSALKIFKTAEECRDRDEERAYVLYMKYVTVY
 NLIKRRPDKFQQDYFHSILGPGNIKKAVEEAERLSESLKLYEEAEVRKKLEEKDRQEEAQLQQRQE
 TGREDGGTLAKGSLENVLDSKDKTQKSNGEKNEKCEKKEGAIKELYMMTDKNISLIIMDARRMQDY
 QDSCILHSLVPEEASISPGVTASWIEAHLPPDDSKDTWKKRGNVEYVLLDWFSSAKDLQIGTTLRSLKDA
 LFKWESKTVLRNEPLVLEGGYENWLLCYPQYTTNAKVTPPPRRQNEEVSISLDFTYPSLEESIPSKPAAQ
 TPPASIEVDENIELISGQNERMGLNISTPVEPVAASKSDVSPIIQPVPSIKNVPQIDRTKPKAVKLPEE
 HRIKSESTNHEQQSPQSGKVIPDRSTKPVVFSPTLMLTDEEKARIHAETALLMEKNKQEKELRERQEEQ
 KEKLRKEEQEQAKKKQEAENEITEKQKAKEEMEKKESEQAKKEDKETSAKRGEITGVKRQSKSEHE
 TSDAKKSVEDRGKRCPTPEIQKSTGDVPHTSVTGDGSGKPFKIKGQPESGILRTGTFREDTDDTERNK
 AQREPLTRARSEEMGRIVPLPSGWAKFLDPIGTFRYYHSPTNTVHMYPPEMAPSSAPPSTPPTHKAKP
 QIPAERDREPSKLRYSYSPDITQAIQEEERKPTVPTVNRNKPCTCYPKAEISRLSASQIRNLPVFG
 GSGPALTGLRNLGNTCYMNSILQCLCNAPHLADYFNRCYQDDINRSNLLGHKGEVAEEFGIIMKALWTG
 QYRISPKDFKITIGKINDQFAGYSQQEQLLFLMDGLHEDLNKADNRKRYKEENNDHDDFKAAEHA
 WQKHKQLNESIIIVALFQGQFKSTVQCLTCHKKSRTFEAFMYLSLPLASTSKCTLQDCLRLFSSKEEKLTDN
 NRFYCSHCRARRDSLKKIEIWKLPVLLVHLKRFSDYDGRWKQKLQTSVDFPLENLDLSQYVIGPKNNLKK
 YNLFVSNHYGGLDGGHYTAYCKNAARQRFKFDDEHVSISVSSVKSSAAYILFYTSLGPRVTDVAT

TRTRPLEQKLISEEDLAANDILDYKDDDDKV

Chromatograms: https://cdn.origene.com/chromatograms/mg2901_a09.zip
Restriction Sites: SgfI-MluI
Cloning Scheme:



ACCN: NM_001128610

ORF Size: 3354 bp

OTI Disclaimer: The molecular sequence of this clone aligns with the gene accession number as a point of reference only. However, individual transcript sequences of the same gene can differ through naturally occurring variations (e.g. polymorphisms), each with its own valid existence. This clone is substantially in agreement with the reference, but a complete review of all prevailing variants is recommended prior to use. [More info](#)

OTI Annotation: This clone was engineered to express the complete ORF with an expression tag. Expression varies depending on the nature of the gene.

Components: The ORF clone is ion-exchange column purified and shipped in a 2D barcoded Matrix tube containing 10ug of transfection-ready, dried plasmid DNA (reconstitute with 100 ul of water).

- Reconstitution Method:**
1. Centrifuge at 5,000xg for 5min.
 2. Carefully open the tube and add 100ul of sterile water to dissolve the DNA.
 3. Close the tube and incubate for 10 minutes at room temperature.
 4. Briefly vortex the tube and then do a quick spin (less than 5000xg) to concentrate the liquid at the bottom.
 5. Store the suspended plasmid at -20°C. The DNA is stable for at least one year from date of shipping when stored at -20°C.

RefSeq: [NM_001128610.3](#)

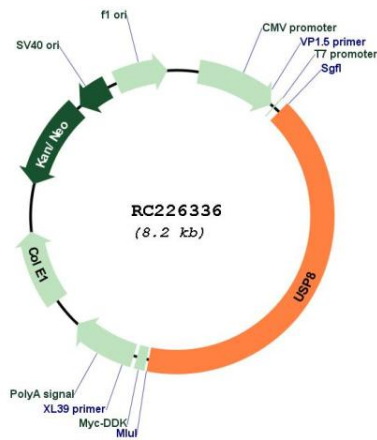
RefSeq ORF: 3357 bp

Locus ID: 9101

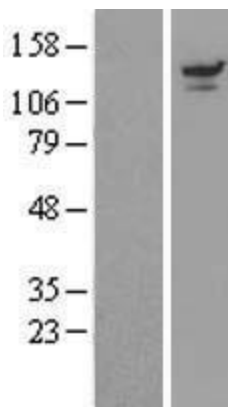
UniProt ID: [P40818](#)

Cytogenetics: 15q21.2
Protein Families: Druggable Genome, Protease
Protein Pathways: Endocytosis
MW: 127.3 kDa
Gene Summary: This gene encodes a protein that belongs to the ubiquitin-specific processing protease family of proteins. The encoded protein is thought to regulate the morphology of the endosome by ubiquitination of proteins on this organelle and is involved in cargo sorting and membrane trafficking at the early endosome stage. This protein is required for the cell to enter the S phase of the cell cycle and also functions as a positive regulator in the Hedgehog signaling pathway in development. Pseudogenes of this gene are present on chromosomes 2 and 6. Alternate splicing results in multiple transcript variants. [provided by RefSeq, Sep 2013]

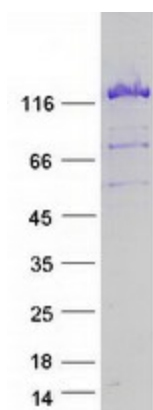
Product images:



Circular map for RC226336



Western blot validation of overexpression lysate (Cat# [LY426973]) using anti-DDK antibody (Cat# [TA50011-100]). Left: Cell lysates from untransfected HEK293T cells; Right: Cell lysates from HEK293T cells transfected with [RC226337] using transfection reagent MegaTran 2.0 (Cat# [TT210002]).



Coomassie blue staining of purified USP8 protein (Cat# [TP326336]). The protein was produced from HEK293T cells transfected with USP8 cDNA clone (Cat# RC226336) using MegaTran 2.0 (Cat# [TT210002]).