

## Product datasheet for RC226333

### IQSEC1 (NM\_001134382) Human Tagged ORF Clone

#### Product data:

**Product Type:** Expression Plasmids  
**Product Name:** IQSEC1 (NM\_001134382) Human Tagged ORF Clone  
**Tag:** Myc-DDK  
**Symbol:** IQSEC1  
**Synonyms:** ARF-GEP100; ARFGEP100; BRAG2; GEP100; IDDSSBA  
**Mammalian Cell Selection:** Neomycin  
**Vector:** pCMV6-Entry (PS100001)  
**E. coli Selection:** Kanamycin (25 ug/mL)  
**ORF Nucleotide Sequence:** >RC226333 representing NM\_001134382  
Red=Cloning site Blue=ORF Green=Tags(s)

TTTTGTAATACGACTCACTATAGGGCGCCGGGAATTCGTCGACTGGATCCGGTACCGAGGAGATCTGCC  
 GCCCGATCGCC

ATGGCTTGCGAAGACGCTATTTTCGTCGAGGGCGAGGCCCCAGCAGTGAGACTGGCACATCCCTGGACA  
 GCCCTCAGCCTACCCAGGGCCCTTGGTGCCCGTTCCAGCCTGAGCCGGATCACTACGAGCACAC  
 GTCAGTGGGAGCCTATGGGCTGACTCGGGCCCGGGGCAACAGCAGCGCACGCGGAGGCCAAGCTG  
 CAGCACTCGACCTCCATCCTGCGCAAGCAGGCTGAGGAGGAGCCATCAAGCGCTCACGCTCACTCTCCG  
 AGAGCTATGAGCTCTCCTCGGACCTGCAGGACAAGCAGGTGGAGATGCTAGAACGAAAGTATGGGGGGCG  
 CCTGGTAACCCGCCATGCGGCCCGACCATCCAGACGGCGTTTCGCCAGTACCAGATGAACAAGAACTTC  
 GAGCGCTTGCAGCTCCATGTCAGAGAACCGCATGTCACGCCGATTGTGCTGTCCAACATGAGGATGC  
 AGTTCTCCTTTGAGGGGCTGAGAAAGTGCACAGCTCCTACTTCGAGGGGAAGCAGGTCTCAGTGACTAA  
 CGACGGCTCCCAGCTGGGAGCCCTGGTGTCCCCTGAGTGTGGTGACCTCAGCGAGCCACCACCTCAAG  
 TCTCCGGCCCCCTCCAGTGACTTTGCGGACGCCATCACCGAGCTGGAGGACGCCTTCTTAGGCAAGTGA  
 AATCACTGGCCGAGTCCATCGACGATGCCCTCACTGCCGAGCTGCACACTGAGGAGGCCACCGGCCCT  
 GGATGCGGCGCGGGCCCGGGACACCGAACCCAGACAGCCCTGCACGGCATGGACCACCGCAAACCTGGAC  
 GAGATGACGGCCTCGTACAGTGATGTACCCTGTACATCGATGAGGAGGAGCTGTGCCCCCTCTGCCCC  
 TCTCGCAGGCAGGGGACCGGCCGTCCAGCACCGAGTCGACCTGCGGCTACGGGCTGGGGGCGCAGCCCC  
 AGACTACTGGCCCTGGCCACAAAGAGGACAAGGCTGACACGGACACGAGCTGCCGGAGCACGCCGTGCG  
 CTGGAGCGGCAGGAGCAGCGGCTGCGGGTGGAGCATCTGCCGCTGCTCACCATCGAGCCACCAGCGACA  
 GCTCTGTGGACCTTAGTGACCGCTCGGAGCGGGGTCCTCAAGAGGCAGAGTGCTTACGAGCGCAGCCT  
 TGGCGGGCAGCAGGGCAGTCCCAAGCATGGTCCCCACAGCGGCCGCCCAAGAGCCTCCCCGGGAGGAG  
 CCTGAGTTGCGGCCCGGCCCCAGGCCCTGGACAGCCACTTGCCATCAATGGCTCAGCCAACCGGC  
 AGAGCAAGTCTGAGTCGGACTACTCAGACGGTGACAATGACAGCATCAACAGCACGTCCAACCAACGA  
 TACCATCAACTGCAGCTCCGAGTCATCGTCCCGTGACAGCCTGCGGGAGCAGACGCTCAGCAAGCAGACC



[View online >](#)

TACCACAAGGAGGCCCGCAACAGCTGGGACTCGCCTGCCTTTAGCAACGATGTCATCCGCAAGAGGCACT  
 ACCGCATCGGCCTGAACCTCTTCAACAAGAAGCCTGAGAAGGGAGTCCAGTACCTCATCGAGCGTGGCTT  
 TGTGCCCGACACGCCCGTGGGGTGGCCACTTCTGCTGCAGCGCAAGGGCCTCAGCCGGCAGATGATC  
 GGGAGTTCTGGGAACCGGCAGAAAGCAGTTCACCCGTGACGTGCTCGACTGCGTCTGGACGAGATGG  
 ACTTCTTACCATGGAGCTGGATGAGGCCCTCAGGAAATCCAGGGCACATCCGTGTCCAAGGGGAGGC  
 TCAGAAAGTGGAGCGGCTCATAGAGCGCTCAGCCAGCGCTACTGCATCTGCAACCCTGGGTGGTGCGG  
 CAATCCGGAACCCAGACACCATTTTCATCTGGCCTTCGCCATCATCCTGCTGAACACCAGACATGTACA  
 GCCCAATGTCAAGCCCGAGCGGAAAATGAAGCTAGAGGACTTCAAGAACCTCCGAGGTGTGGACGA  
 TGGTGAGGACATTCCCCGTGAGATGCTGATGGGGATCTATGAACGGATCCGTAAGCGAGAGCTAAAGACC  
 AATGAGGACCATGTGTCCAGGTGCAGAAGGTGGAGAAGCTATTGTGGGGAAAAAGCCGATCGGATCCC  
 TGCATCCCGGGCTCGGCTGTGTGCTCTCTGCCCCACCGTGGTTGGTCTGCTACTGCCGGCTCTTTGA  
 GGTTCCAGACCCAAACAAGCCCCAGAACTCGGACTACACCAGCGAGAAATCTTCTGTTCAACGACCTC  
 CTGGTGGTACCAAGATCTTCCAGAAGAAGAAGAACTCGGTGACGTACAGCTTCCGACAGCTCTTCTCT  
 TGTACGGCATGCAGGTCTGCTCTTCCGAGAACCAGTACTACCCCAATGGCATCCGGCTCACCTCGTCTGT  
 CCCCAGGAGCAGATATCAAAGTGTAAATAAACTTCAACGCCCCCAACCCTCAAGACCGGAAGAAATCACC  
 GATGACCTGCGGGAGTCCATTGCCGAAGTCCAAGAGATGGAGAAGCACAGGATAGAGTCCGAGCTCGAGA  
 AGCAGAAAGGCGTCTGCGGGCCAGCATGTCCCAGTGCTTAGCCTCAAAAAGGAGTCCGGCAACCGAAC  
 ACTGAGCCGGGCTGCCTGGACGACAGCTATGCCAGCGGTGAGGGCCTCAAGCGCAGCGCCCTCAGCAGC  
 TCCCTGCGGGACCTCTCGGAAGCCGGGAAGCGAGGGCGTCCGACAGTCCGGGATCGCTAGAGAGCAATG  
 TGAAGGGTCCATCATTAGCAGTCTCACATGCCCGGAGAGCTACATCAACACGAGAGTGTCCATCTCG  
 CCCACACCAGACTATGCCCAACTCATCTTCCCTCTGGGCTCCTATTCCGGGAGCAAGAGAGGGAAGCCC  
 CCTCCCCAGGCCACCTGCCCTCAGCCCCAGCCCTGCCACCCCCACCCACCGTGGTCTGCCTCACT  
 TGCAGCACTCTGTGGCTGGCCACCACCTGGGGCCCCAGAGGGGCTGCCGAGGCCGCAATGCACCGGCA  
 TCACACCCAGTACTGCCACATGCAGAACCCTCCCCGTACCACCATACCACACCACCCACCCAG  
 CACATCCAGCACGACACCAGTACCACCACGGCCCCATGGGGGCCACCCAGCCTACGGGGCCATGCC  
 ACGGCCACCCGCGCTGCCCTCGGCCACGTGGGGCACACAGTGCACCACCATGGGCAGCCCCCTGCC  
 GCCCCCCCACCAGCAGCAAGGCCAAACCAGCGGCATCAGCACAAATTGTG

ACGCGTACGCGGCCGCTCGAGCAGAAACTCATCTCAGAAGAGGATCTGGCAGCAATGATATCCTGGATT  
 ACAAGGATGACGACGATAAGGTTTAA

**Protein Sequence:**

>RC226333 representing NM\_001134382  
 Red=Cloning site Green=Tags(s)

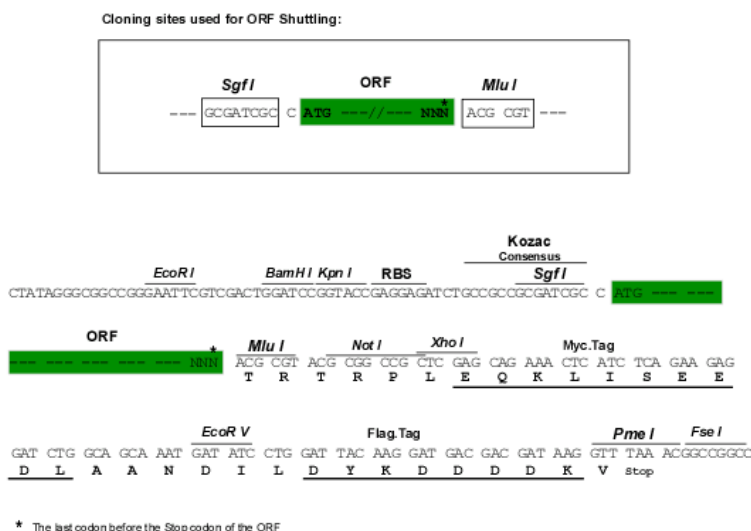
MACRRRYFVEGEAPSSSETGTSLDSPSAYPQGPLVPGSSLSPDHYEHTSVGAYGLYSGPPGQQQRTTRPKL  
 QHSTSILRKQAEIEAIKRSRSLSESYELSSDLQDKQVEMLERKYGGRLVTRHAARTIQTAFROYQMNKNF  
 ERLRSSMSENRRSRIIVLSNMRMQFSFEGPEKVHSSYFEGKQVSVTNDGSQLGALVSPECGLDSEPTTLK  
 SPAPSSDFADAI TELEDAFSRQVKSLAESIDDALNCRSLHTEEAPALDAARARDTEPQTALHGM DHRKLD  
 EMTASYSVTLYIDEELSPPLPLSQAGDRPSSTESDLRLRAGGAAPDYWALAHKEDKADTDTSCRSTPS  
 LERQEQLRVEHLPLLTIEPPSDSSVDLSR SERGSLKRQSA YERSLGGQQGSPKHGPHSGAPKSLPREE  
 PELRPRPRPLD SHLAINGSANRQSKSESDYS DGDNDINS TSN SNTINC SSES SRRSLREQTL SKQT  
 YHKEARN SWDSPA FSN DVIRKRHYR IGLNLFNKKPEKGVQYLIERGFVPDTPVGV AHFLLQRKGLSRQMI  
 GEFLGNRQKQFN RDVLD CVVDEMDFSTMELDEALRKFAQHIRVQGEAQKVERLIEAFSQR YCICNP GVVR  
 QFRNPDTIFILAF AIILLNTDMYSPNVKPERKMKLEDFIKNLRGVDDGEDIPREMLMGIYERIRKRELKT  
 NEDHVSQVQKVEKLI VGKKPIGSLHPGLGCVLSLPHRRLV CYCRLFV PDPNKPQKLG LHQREIFL FNDL  
 LVVTKIFQKKNSVTYSFRQSFSLYGMQVLLFENQYYPNGIRL TSSVPGADIKVLINFNAPNPQDRKKFT  
 DDLRESIAEVQEMEKHRIESELEKQKGVVRPMSQCSSLKKESNGTL SRACLD DSYASGEGLKRSALSS  
 SLRDLSEAGKRGRSSAGSLESNVEGSIISPHMRRRATSTRECP SRPHQTMPNSSLLGSLFGSKRGK P  
 PPQAHLP SAPALPPP PPVVLPHLQHSVAGHHLGPPEGLPQAAMHGHTQYCHMQNPPPYHHHHHHPPQ  
 HIQHAHQYHHGPHGGHPAYGAHAHGHPPLSAHVGH TVHHHGQPPAPPPPTSSKAKPSGISTIV

TRTRPLEQKLISEEDLAANDILDYKDDDDKV

**Chromatograms:** [https://cdn.origene.com/chromatograms/mk8031\\_g03.zip](https://cdn.origene.com/chromatograms/mk8031_g03.zip)

**Restriction Sites:** SgfI-MluI

**Cloning Scheme:**



**ACCN:** NM\_001134382

**ORF Size:** 3342 bp

**OTI Disclaimer:** The molecular sequence of this clone aligns with the gene accession number as a point of reference only. However, individual transcript sequences of the same gene can differ through naturally occurring variations (e.g. polymorphisms), each with its own valid existence. This clone is substantially in agreement with the reference, but a complete review of all prevailing variants is recommended prior to use. [More info](#)

**OTI Annotation:** This clone was engineered to express the complete ORF with an expression tag. Expression varies depending on the nature of the gene.

**Components:** The ORF clone is ion-exchange column purified and shipped in a 2D barcoded Matrix tube containing 10ug of transfection-ready, dried plasmid DNA (reconstitute with 100 ul of water).

**Reconstitution Method:**

1. Centrifuge at 5,000xg for 5min.
2. Carefully open the tube and add 100ul of sterile water to dissolve the DNA.
3. Close the tube and incubate for 10 minutes at room temperature.
4. Briefly vortex the tube and then do a quick spin (less than 5000xg) to concentrate the liquid at the bottom.
5. Store the suspended plasmid at -20°C. The DNA is stable for at least one year from date of shipping when stored at -20°C.

**RefSeq:** [NM\\_001134382.3](#)

**RefSeq ORF:** 3345 bp

**Locus ID:** 9922

**UniProt ID:** [Q6DN90](#)

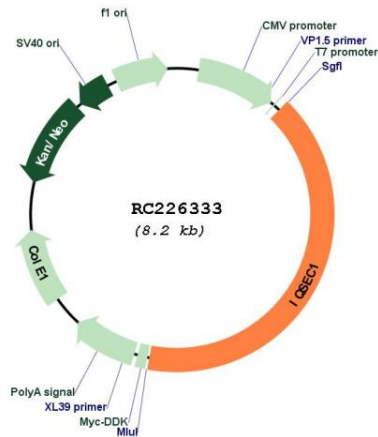
**Cytogenetics:** 3p25.2-p25.1

**Protein Pathways:** Endocytosis

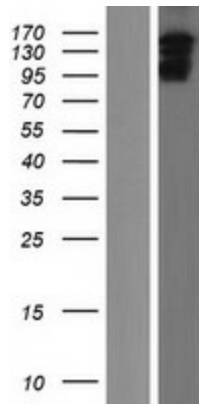
**MW:** 124.3 kDa

**Gene Summary:** Guanine nucleotide exchange factor for ARF1 and ARF6 (PubMed:24058294). Guanine nucleotide exchange factor activity is enhanced by lipid binding (PubMed:24058294). Accelerates GTP binding by ARFs of all three classes. Guanine nucleotide exchange protein for ARF6, mediating internalisation of beta-1 integrin.[UniProtKB/Swiss-Prot Function]

**Product images:**



Circular map for RC226333



Western blot validation of overexpression lysate (Cat# [LY427410]) using anti-DDK antibody (Cat# [TA50011-100]). Left: Cell lysates from untransfected HEK293T cells; Right: Cell lysates from HEK293T cells transfected with RC226333 using transfection reagent MegaTran 2.0 (Cat# [TT210002]).