

Product datasheet for **RC226330**

Synaptopodin 2 (SYNPO2) (NM_001128934) Human Tagged ORF Clone

Product data:

Product Type:	Expression Plasmids
Product Name:	Synaptopodin 2 (SYNPO2) (NM_001128934) Human Tagged ORF Clone
Tag:	Myc-DDK
Symbol:	Synaptopodin 2
Mammalian Cell Selection:	Neomycin
Vector:	pCMV6-Entry (PS100001)
E. coli Selection:	Kanamycin (25 ug/mL)
ORF Nucleotide Sequence:	>RC226330 representing NM_001128934 Red=Cloning site Blue=ORF Green=Tags(s)

TTTTGTAATACGACTCACTATAGGGCGGCCGGGAATTCGTCGACTGGATCCGGTACCGAGGAGATCTGCC
GCC**CGATCGCC**

ATGGGCACAGGGGATTTATCTGCATTTCCATGACTGGAGGGCGCCCTGGGGTTTCAGATTGCAAGGTG
GCAAGGAGCAGAAGCAGCCCTTACAAGTTGCAAAGATTCGAAATCAGAGCAAAGCCTCTGGGTCTGGGCT
CTGTGAGGGAGATGAAGTGGTTTCCATCAATGGCAACCCTGTGCAGATCTCACCTACCTGAAGTCATC
AAGCTCATGGAAGCATAACAGACTCTCTCAAATGCTCATCAAAGACCATCCAGTGGAAATAGTGAGG
CTTTGATATCTGAAATGAAAACAAAACCTCGAGCATCTCACACATGGGGGTTATGTGGAAAGTACCAC
CCTGCAGATTCGACCGGCCACAAAGACCCAGTGCACAGAATTCTTCTCGCCCCTGCAAGACTGAAGTT
CCCCTAGCTGAGAACCAAGAAGTGGTCCCGACTGTGCAGGCAGCTTGAAGAAGAACAAGGCCCGAGCT
ACCAAAGGGCTCCCCAAATGCCTGACTCCCAAAGAGGACGCGTGGCAGAAGAGCTGATCTTAAGGGAGAA
GGTAGAAGCGGTACAGCCTGGGCTGTGGTTGAGCTGCAACTGTCCCTTTCACAGGAGAGACATAAGGGC
GCTAGTGGCCCTTAGTGGCTCTCCGGGAGCTGAAAAATCTAAGTCTCCTGACCCAGACCCTAACTTGT
CACATGACAGGATTGTCCACATAAATTCGATCCCTACTAATGAGAAAGCAGACCCTTCTGAGGTCCAG
CAAGATAATCCAGATCTCCAGTGGCAGAGATTGAGAGTATCCAGGAAAGTGAAGCAGGAGATGCGGGA
CTGCCCGGGTGAAGTATCCTCGACTGCTCTGACAGGCAGAAGACAGAAGGGTGCAGGCTTCAGGCAG
GAAAGGAGTGTGTGGATTCTCCAGTGGAAAGGAGGGCAGTCAAGACACCTCTTCTGTTATCCTTTGC
CGTCTCATCAGAAGGCACAGAGCAGGGAGAAGATCCACGCTCGGAAAAAGATCACAGCAGACCTCACAAG
CACCGAGCGCGCATGCACGGCTCAGGAGGAGTAAAAGCCTGTCAGAAAAACAAGTGAAGGAAGCAAAAT
CTAAATGCAAAAGCATTGCCCTTCTTCTAACGGATGCTCCCAACCCCAACTCCAAGGGGGTGTGATGTT
TAAGAAGCGAGCTCGGAGGGCCAGGAAATACACCCTAGTTAGCTACGGTACTGGCGAGCTTGAGCGAGAG
GCGGACGAGGAGGAAGAAGGTGACAAGGAGGATACATGTGAAGTAGCATTCTTGGTGCAAGCGAATCAG
AGGTGGATGAAGATTATTGTCTGACGTTGACGACAACACACAAGTTGTGAACTTACTGGGATTCTGG
ACTGGTGGACATTGAAAAGAACTGAACAGAGGGGACAAGATGGAGATGTTACCAGACCCACAGGCAAG
GGAGCCCTCATGTTTGCCAAAGAGGAGGGAGAGAATGGATCAGATCACAGCCAAAAAAGAAGAGCAAGG
TAGGTGGAACGCCAAGCAGAGAACAAGATGCTGCCAGACCGATGGCCTGAGAACCACGACTTCTTACCA



AAGAAAGGAGGAAGAGTCGGTAAGAACGCAGAGCTCTGTGAGCAAAAGCTACATCGAGGTGAGTCATGGT
 CTTGGCCATGTTCCCAACAGAATGGCTTCAGTGGGACATCTGAGACAGCAAACATCCAGAGGATGGTCC
 CCATGAATAGAACGGCCAAACCCCTCCAGGGTCTGTGAATCAGCCAGCTACCCCTTCTCGCAACCCG
 AAACATGACGAGTCCCATTGCTGACTTCTGCACCTCCACCTTACTCTGCAGTCACTCCTCCCTGAC
 GCCTTCTCAGAGGGTTTCAAGTCCGATTGCTGGCCAGCACAGCCCTCCATGGCCCCAGCCTGCC
 CGTGGTCCCAGCCAGCCTTTTACGATTCGTCTGAGCGAATAGCTTCCCGAGATGAGAGGATCTCAGTGCC
 AGCAAAAAGAACAGGAATATTGCAGGAGCCAAAAGGAGAAGCAGCAAAAACCCATGTTACTTTTAAA
 GAGCCCAAAGTAAGCCCAATCCTGAACCTTGTCACTCCTTCAAATTCAGAAGCAAAACGGGCACTG
 GAGCTGGAGGTGATTCCGGACCGAAGAAGACTACCTCAGCTTGGGGCAGAGGCTTGAATTTTCATGCA
 AAGCTCCTCTGCCAAAACAAAAGACCCCTCCTCCTGTTGCTCAAAACCTGCAGTCAAGTCTCATCTCC
 CAACCAGTAACTCAGTTTCCCACTGCTGGTCTCCAGGAGTGGCTCCACCCAACCTCCTGCCTTCCCA
 CATCCAACCCATCAAAGGGCACCCTTGTCTCCTCCATCAAATAGCCAGCCTTCTTACCCTCCTGCCCG
 GCCTGCAAGTACTTTGACGTGGCTGGTCCCTCAAAGGACCACAAGCAGCAGTACCCAGTCAAGTATAC
 ACACCAAAACCAACAGTTTCCACACCAACAGTCAATGCTGTTGAGCCTGGTGCAGTGGGACCATCCAATG
 AGCTTCCAGGAATGAGTGGGAGAGGAGCTCAGCTCTTGTAAAAGGCAGTGCAGAAATGGAGAAGTATGT
 GGTGATTTCAGACACGGTGCAGGCCACGCTGCTCGAGCTCAGTCTCCACTCCATCTCTCCCGGCCAGT
 TGGAACTACTCCTCAATGTCCGAGCACCTCCTCCTGTGGCCTATAATCCTATCCACTCGCCGTCTTACC
 CACTGGCTGCTCTCAAGTCTCAGCCATCAGCTGCACAGCCCTCCAAAATGGGCAAGAAAAGGAAAGAA
 ACCCTCAATGCATTAGATGTGATGAAGCACAACCGTATCAGCTCAATGCATCCTTGTACTTTCCAA
 CCTCCAGATGCAAAGGATGGCTCCCAAGAGTATCAGTCAAGGTCATTCAGCCCTGGCCATGAAGC
 AAGCTCTTCTCCCGGCCAGTGAATGCTGCCTCACCTACGAATGTGCAGGCTTCGTGAGTACTCGGT
 ACCAGCCTATACCTCCTCCTTCTTTCAGAGGCTCCTCACCAGTCAAGTCAATCCCAAGTGCCT
 GTGGGCAATCCCACTCGCCAAAGCAAGAATCAGCCTCATCTTATTTTGTGGCAACCAAGGCCAAAGT
 TCTCAGCCAAAGAAAGTGGTGTCAAAATCAGGTGAAATGTAAATCTGGGATCCATAGTCAAGATATCAT
 AAGGACCTACTTCCAGCCTACCTTCTCCTCTACC

ACGCGGCCGCTCGAGCAGAAACTCATCTCAGAAGAGGATCTGGCAGCAAATGATATCCTGGA
 TTACAAGGATGACGACGATAAGGTTTAA

Protein Sequence:

>RC226330 representing NM_001128934
 Red=Cloning site Green=Tags(s)

MGTGDFICISMTGGAPWGFRLQGGKEQKQPLQVAKIRNQSKASGSGLCEGDEVVSIINGNPCADLTYPEVI
 KLMESITDSLQMLIKRPSSGISEALISENENKNLEHLTHGGYVESTTLQIRPATKTQCTEFFLAPVKTEV
 PLAENQRSGPDCAGSLKEETGSPYQRAPQMPDSQRGRVAEELILREKVEAVQPGPVVELQLSLSQERHKG
 ASGPLVALPGAESKSPDPDNL SHDRI VHINSIPTNEKADPFLRSSKIIQISSGRELRVIQESEAGDAG
 LPRVEVILDCSDRQKTEGCR LQAGKECVDSPVEGGQSEAPPSLVSFVAVSSEGTEQGEDPRSEKDHSPHK
 HRARHARLRSESLSEKQVKEAKSKCKSIALLLTDAPNPNSKGVLMFKKRRRRARKYTLVSYGTGELERE
 ADEEEEGDKEDTCEVAFLGASESEVDEELLSDVDDNTQVNVFDWDSGLVDIEKLNLRGDKMEMLPDTTGK
 GALMFAKRRERMDQITAQKEEDKVGTPSREQDAAQTDGLRTTTTSYQRKEEESVTRQSSVSYSYIEVSHG
 LGHVPQQNGFSGTSETANIQRMPVPMNRTAKPFPGSVNQPATPFPSPTRNMTSPIADFPAPPYSAVTPPPD
 AFSRGVSSPIAGPAQPPWPQPAPWSQPAFYDSSERIASRDERISVPAKRTGILQEAKRRSTTKPMFTFK
 EPKVSPNPELLSLLQNSEGKRGTGAGGDSGPEEDYL SLGAEACNFMQSSSAKQKTPPPVAPKPAVKSSSS
 QPVTVPVWSPGVAPTQPPAFPTSNPSKGTVVSSIKIAQPSYPPARPASTLNVAGPFGKQPAAVASQNY
 TPKPTVSTPTVNAVQPGAVGPSNELPGMSGRGAQLFAKRQSRMEKYVVDSDTVQAHARAQSPTPSLPAS
 WKYSSNVRAPPPVAYNP IHSYPLAALKSQPSAAQPSKMGKKKGGKPLNALDVMKHQPYQLNASLFTFQ
 PPDAKDGLPKSSVKNVNSALAMKQALPPRPVNAASPTNVQASSVYVPAVYTSPPSFFAEASSPVSASPVP
 VGIPSPKQESASSSYFVAPRPKFSAKKSGVTIQVKCKSGIHSQDIIRTYFPAYLSSST

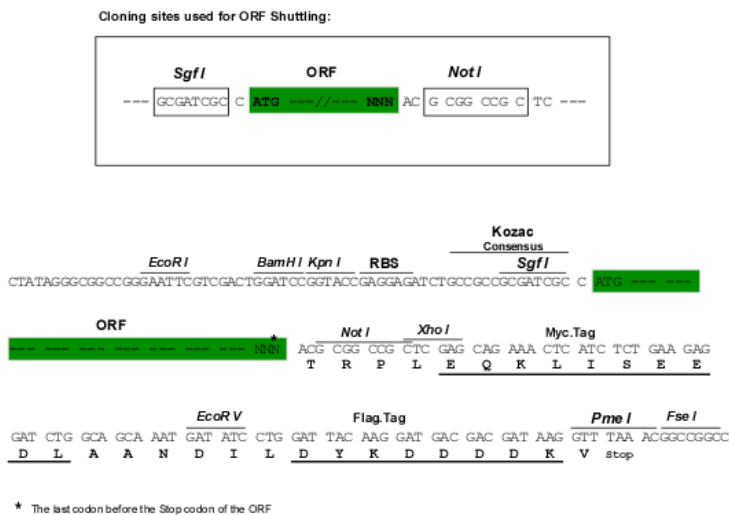
TRRLEQKLI SEEDLAANDILDYKDDDDKV

Chromatograms:

https://cdn.origene.com/chromatograms/mk8117_a12.zip

Restriction Sites: Sgfl-NotI

Cloning Scheme:



ACCN: NM_001128934

ORF Size: 3327 bp

OTI Disclaimer: The molecular sequence of this clone aligns with the gene accession number as a point of reference only. However, individual transcript sequences of the same gene can differ through naturally occurring variations (e.g. polymorphisms), each with its own valid existence. This clone is substantially in agreement with the reference, but a complete review of all prevailing variants is recommended prior to use. [More info](#)

OTI Annotation: This clone was engineered to express the complete ORF with an expression tag. Expression varies depending on the nature of the gene.

Components: The ORF clone is ion-exchange column purified and shipped in a 2D barcoded Matrix tube containing 10ug of transfection-ready, dried plasmid DNA (reconstitute with 100 ul of water).

Reconstitution Method:

1. Centrifuge at 5,000xg for 5min.
2. Carefully open the tube and add 100ul of sterile water to dissolve the DNA.
3. Close the tube and incubate for 10 minutes at room temperature.
4. Briefly vortex the tube and then do a quick spin (less than 5000xg) to concentrate the liquid at the bottom.
5. Store the suspended plasmid at -20°C. The DNA is stable for at least one year from date of shipping when stored at -20°C.

RefSeq: [NM_001128934.3](#)

RefSeq ORF: 3330 bp

Locus ID: 171024

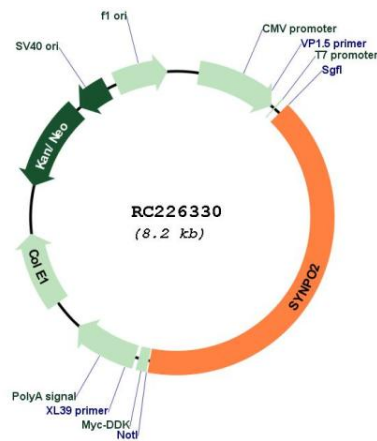
UniProt ID: [Q9UMS6](#)

Cytogenetics: 4q26

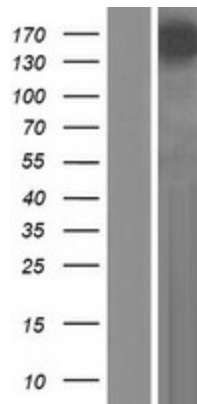
MW: 119.1 kDa

Gene Summary: Has an actin-binding and actin-bundling activity. Can induce the formation of F-actin networks in an isoform-specific manner (PubMed:24005909, PubMed:23225103). At the sarcomeric Z lines is proposed to act as adapter protein that links nascent myofibers to the sarcolemma via ZYX and may play a role in early assembly and stabilization of the Z lines. Involved in autophagosome formation. May play a role in chaperone-assisted selective autophagy (CASA) involved in Z lines maintenance in striated muscle under mechanical tension; may link the client-processing CASA chaperone machinery to a membrane-tethering and fusion complex providing autophagosome membranes (By similarity). Involved in regulation of cell migration (PubMed:22915763, PubMed:25883213). May be a tumor suppressor (PubMed:16885336). [UniProtKB/Swiss-Prot Function]

Product images:



Circular map for RC226330



Western blot validation of overexpression lysate (Cat# [LY427035]) using anti-DDK antibody (Cat# [TA50011-100]). Left: Cell lysates from untransfected HEK293T cells; Right: Cell lysates from HEK293T cells transfected with RC226330 using transfection reagent MegaTran 2.0 (Cat# [TT210002]).