

Product datasheet for **RC226329**

AREB6 (ZEB1) (NM_001128128) Human Tagged ORF Clone

Product data:

Product Type:	Expression Plasmids
Product Name:	AREB6 (ZEB1) (NM_001128128) Human Tagged ORF Clone
Tag:	Myc-DDK
Symbol:	AREB6
Synonyms:	AREB6; BZP; DELTAEF1; FECD6; NIL2A; PPCD3; TCF8; ZFHEP; ZFH1A
Mammalian Cell Selection:	Neomycin
Vector:	pCMV6-Entry (PS100001)
E. coli Selection:	Kanamycin (25 ug/mL)
ORF Nucleotide Sequence:	>RC226329 representing NM_001128128 Red=Cloning site Blue=ORF Green=Tags(s)

TTTTGTAATACGACTCACTATAGGGCGGCCGGAATTCGTCGACTGGATCCGGTACCGAGGAGATCTGCC
GCC**CGATCGCC**

ATGAAAGTTACAAATTATAACTGTGGTAGAAACAAATTCAGATTCAGATGATGAAGACAACTGCATA
TTGTGGAAGAAGAAAGTGTACAGATGCAGCTGACTGTGAAGGTGTACCAGAGGATGACCTGCCAACAGA
CCAGACAGTGTACCAGGGAGGAGCAGTAAAGAGAAGGGAATGCTAAGAACTGCTGGGAGGATGACACA
GGAAAGGAAGGGCAAGAAATCCTGGGCCTGAAGCTCAGGCAGATGAAGCAGGATGTACAGTAAAAGATG
ATGAATGCGAGTCAGATGCAGAAAATGAGCAAAACCATGATCCTAATGTTGAAGAGTTTCTACAACAACA
AGACACTGCTGTCAATTTTCTGAGGCACCTGAAGAGGACCAGAGGCAGGGCACACCAGAAGCCAGTGGT
CATGATGAAAATGGAACACCAGATGCATTTTCACAATTAATCACTGTCATATTGTGATAGAGGCTATA
AACGCTTTACCTCTCTGAAAGAACACATTAATATCGTCATGAAAAGAATGAAGATAACTTTAGTTGCTC
CCTGTGCAAGTACACCTTTGCATACAGAACCAACTTGAACGTCACATGACATCACATAAATCAGGAAGA
GATCAAAGACATGTGACGCAGTCTGGGTGTAATCGTAAATCAAATGCACTGAGTGTGAAAAAGCTTTCA
AATACAAACATCACCTAAAAGAGCACTTAAAGATTCACAGTGGAGAGAAGCCATATGAATGCCAAACTG
CAAGAAACGCTTTTCCCATTCTGGCTCCTATAGCTCACACATAAGCAGTAAGAAATGTATCAGCTTGATA
CCTGTGAATGGGCGACCAAGAACAGGACTCAAGACATCTCAGTGTCTTCCAGCTCTTTTCCAGCATCAC
CAGGCAGTCCCACACGACCACAGATACGGCAAAAGATAGAGAATAAACCCCTTCAAGAACAACATTTCTGT
TAACCAAATTAATAACTGAACCTGTGGATTATGAATTCAAACCCATAGTGGTTGCTTCAGGAATCAACTGT
TCAACCCCTTTACAAAATGGGGTTTTCACTGGTGGTGGCCATTACAGGCAACCAGTTCTCCTCAGGGCA
TGGTGCAAGCTGTTGTTCTGCCAACAGTTGGTTTGGTGTCTCCATAAGTATCAATTTAAGTGATATTCA
GAATGTACTTAAAGTGGCGGTAGATGGTAATGTAATAAGGCAAGTGTGGAGAATAATCAAGCCAATCTT
GCATCAAAGAACAAGAAACAATCAATGCTTACCACATAACAAGGTGGCCATTCTGTTATTTAGCCA
TCAGTCTTCTTTGGTTGATCAAGATGGAACAACCAAAATATCATCAACTACAGTCTTGAGCAGCCTAG
CCAACCTCAAGTTGTTCTCAAAATTTAAAAAAGAAAAATCCAGTCGCTACAACAGTTGTAAGTAAAGTAA



[View online »](#)

AAGTTACCAGAAGATCTTACTGTAAAGTCTGAGAAGGACAAAAGCTTTGAAGGGGGGTGAATGATAGCA
 CTTGTCTTCTGTGTGATGATTGTCCAGGAGATATTAATGCACTTCCAGAATTAAGCACTATGACCTAAA
 GCAGCCTACTCAGCCTCCTCCACTCCCTGCAGCAGAAGCTGAGAAGCCTGAGTCTCTGTTTCATCAGCT
 ACTGGAGATGGCAATTTGTCTCTAGTCAGCCACCTTTAAAGAACCTCTTGTCTCTCTAAAAGCATATT
 ATGCTTTGAATGCACAACCAAGTGCAGAAGAGCTCTCAAAAATTGCTGATTTCAGTAAACCTACCCTGGA
 TGTAGTAAAAAAGTGGTTTGAAGAAGTGAAGCTGGACAGATTTTCAGTGCAGTCTTCTGAACCATCTTCT
 CCTGAACCAGGCAAAGTAAATATCCCTGCCAAGAACAATGATCAGCCTCAATCTGCCAAATGCAAAATGAAC
 CCCAGGACAGCAGTAAATCTACAAAGTCTTTGAAGATGACTAACTCCCAGTTTTACCAGTGGGATC
 AACCCCAATGGTTCCAGAAGTAGTACACCATCCCATCACCTCTAAACCTTTCTCATCCAGAAATACA
 CAGGGTACTTGTACACAGCTGAGGGTGCACAAGAAGAGCCACAAGTAGAACCTCTTGATCTTCTACTAC
 CAAAGCAACAGGGAGAATTATTAGAAAGGTCAACTATCACTAGTGTTTACCAGAACAGTGTTTATTCTGT
 CCAGGAAGAACCCTTGAACCTGTCTTGCACAAAAAGGAGCCACAAAAGGACAGTTGTGTTACAGACTCA
 GAACCAAGTGTAAATGTAATCCCACCAAGTGCCAAACCCATAAAATATCGTATACCTACAGTCACTGCC
 AGTTACCCACAATCGTGGCCATTGCTGACCAGAACAGTGTCCATGCTTAAGAGCGCTAGCTGCCAATAA
 GCAAACGATTCTGATTTCCCAGGTGGCATAACCTACTCAACTACGGTCAAGCCTGCAGTCCAAGAACCA
 CCCTTGAAAGTATCCAGCCAAATGGAATCAGGATGAAAGACAAGATACTAGCTCAGAAGGAGTATCAA
 ATGTAGAGGATCAGAATGACTCTGATTCTACACCGCCAAAAAGAAAATGCGGAAGACAGAAAATGGAAT
 GTATGCTTGTGATTTGTGTGACAAGATATTCAAAAGAGTAGTTCATTATTGAGACATAAATATGAACAC
 ACAGGTAAGACCTCATGAGTGTGGAATCTGTAAAAAGGCATTTAAACACAAACATCATTTGATTGAAC
 ACATGCGATTACATCTGGAGAAAAGCCCTATCAATGTGACAAATGTGGAAGGCGCTTCTCACACTCTGG
 GTCTTATTCTCAACATGAATCATCGTACTCCTACTGTAAGAGAGAAGCGGAAGAAGTGCAGCAGACA
 GAGCAGGAAGAGGAGAGAGTTTGCAGGAAAGAGGATGAAGACAGTGAAGAAAGAGGAGAGGAGGA
 GCGACTCGGACGAGAGAGAGTTTGCAGGAAAGAGGATGAAGACAGTGAAGAAAGAGGAGAGGAGGA
 GGATAAAGAGATGGAAGAATTGCAGGAAGAAAAGAATGTGAAAAACCACAAAGGGGATGAGGAAGAGGAG
 GAGGAGGAGGAAGAAGTGAAGAAGAAGAGGTAGAAGAGGCAGAGAATGAGGGAGAGAAGCAAAAAGT
 AAGGTCTGATGAAGGATGACAGGGCTGAAAGTCAAGCAAGCAGCTTAGGACAAAAAGTAGGCGAGAGTAG
 TGAGCAAGTGTCTGAAGAAAAGACAAATGAAGCC

ACGCGTACGCGGCCGCTCGAGCAGAACTCATCTCAGAAGAGGATCTGGCAGCAATGATATCCTGGATT
 ACAAGGATGACGACGATAAGGTTTAA

Protein Sequence:

>RC226329 representing NM_001128128
 Red=Cloning site Green=Tags(s)

MKVTNYNTVVETNSDSDDEDKHLHIVEEESVTDAAADCEGVPEDDLPTDQTVLPGRSSEREGNAKNCWEDDT
 GKEGQEILGPEAQADEAGCTVKDDECESDAENEQNHPNVEEFLQQQDTAVIFPEAPEEDQRQGTPEASG
 HDENGTPDAFSQLLTCPCYDRGYKRFSTLKEHIKVRHEKNEDNFSCSLCSYTFAYRTQLERHMTSHKSGR
 DQRHVTQSGCNRKFKCTECGKAFKYKHLKEHLRIHSGEKPYECPNCKKRFSHSGSYSSHISKKCISLI
 PVNGRPRRTGLKTSQCSSPSLSASPGSPTRPQIRQKIENKPLQEQLSVNQIKTEPVDYEFKPIVVASGINC
 STPLQNGVFTGGGPLQATSSPQGMVQAVVLPVGLVSPISINLSDIQNVLKVAVDGNVIRQVLENNQANL
 ASKEQETINASPIQQGGHVSISLPLVDQDGTKIINYSLEQPSQLQVVPQNLKKNENPVATNSCKSE
 KLPEDLTVKSEKDKSFEAGVNDSTCLLDCDCPDINALPELKHYDLKQPTQPPPLPAEAEKPESSVSSA
 TGDGNLSPSQPPLKNLLSLLKAYALNAQPSAEELSKIADSVNPLDQVKKWFEKMQAGQISVQSSEPPSS
 PEPGKVNIPAKNNDQPSANANEPQDSTVNLQSPKMTNSPVLVPGSTTNGSRSTSPSPSPLNLSRRNT
 QGYLYTAEGAQEEPQVEPLDLSLPKQQEGELLERSTITSVYQNSVYSVQEEPLNLSCAKKEPQKDSVTDSD
 EPVVNVIPPSANPINIAIPTVTAQLPTIVAIADQNSVPCLRALAAANKQITLIPQVAYTYSTTVSPAVQEP
 PLKVIQPNGNQDERQDTSSEGVSNVEDQNDSDSTPPKMKMRKTENGMACDLCDKIFQKSSLLRHQYEH
 TGRPHECGICKKAFKHKHHLIEHMRLHSGEKPYQCDKCGKRFSHSGSYSQHMNHRSYCKREAEERDST
 EQEEAGPEILSNEHVGARASPSQGDSDERESL TREEDDESEKEEEEEEDKEMEELQEEKECEKQGDSEEE
 EEEEEVEEEVEEAENEGEEAKTEGLMKDDRAESQASSLGQKVGESSEQVSEKTNEA

TRTRPLEQKLISEEDLAANDILDYKDDDDKV

Restriction Sites: SgfI-MluI

Cloning Scheme:



ACCN: NM_001128128

ORF Size: 3324 bp

OTI Disclaimer: Due to the inherent nature of this plasmid, standard methods to replicate additional amounts of DNA in E. coli are highly likely to result in mutations and/or rearrangements. Therefore, OriGene does not guarantee the capability to replicate this plasmid DNA. Additional amounts of DNA can be purchased from OriGene with batch-specific, full-sequence verification at a reduced cost. Please contact our customer care team at custsupport@origene.com or by calling 301.340.3188 option 3 for pricing and delivery.

The molecular sequence of this clone aligns with the gene accession number as a point of reference only. However, individual transcript sequences of the same gene can differ through naturally occurring variations (e.g. polymorphisms), each with its own valid existence. This clone is substantially in agreement with the reference, but a complete review of all prevailing variants is recommended prior to use. [More info](#)

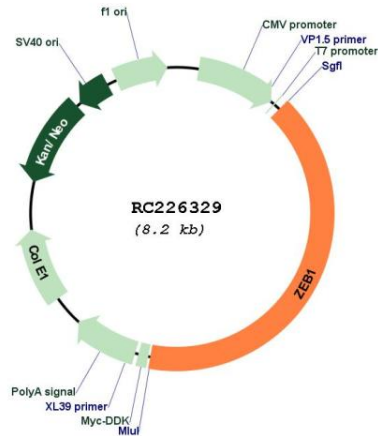
OTI Annotation: This clone was engineered to express the complete ORF with an expression tag. Expression varies depending on the nature of the gene.

Components: The ORF clone is ion-exchange column purified and shipped in a 2D barcoded Matrix tube containing 10ug of transfection-ready, dried plasmid DNA (reconstitute with 100 ul of water).

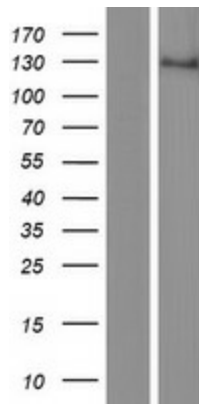
- Reconstitution Method:**
1. Centrifuge at 5,000xg for 5min.
 2. Carefully open the tube and add 100ul of sterile water to dissolve the DNA.
 3. Close the tube and incubate for 10 minutes at room temperature.
 4. Briefly vortex the tube and then do a quick spin (less than 5000xg) to concentrate the liquid at the bottom.
 5. Store the suspended plasmid at -20°C. The DNA is stable for at least one year from date of shipping when stored at -20°C.

RefSeq: [NM_001128128.3](#)
RefSeq ORF: 3327 bp
Locus ID: 6935
UniProt ID: [P37275](#)
Cytogenetics: 10p11.22
Protein Families: Transcription Factors
MW: 121.9 kDa
Gene Summary: This gene encodes a zinc finger transcription factor. The encoded protein likely plays a role in transcriptional repression of interleukin 2. Mutations in this gene have been associated with posterior polymorphous corneal dystrophy-3 and late-onset Fuchs endothelial corneal dystrophy. Alternatively spliced transcript variants encoding different isoforms have been described.[provided by RefSeq, Mar 2010]

Product images:



Circular map for RC226329



Western blot validation of overexpression lysate (Cat# [LY426892]) using anti-DDK antibody (Cat# [TA50011-100]). Left: Cell lysates from untransfected HEK293T cells; Right: Cell lysates from HEK293T cells transfected with RC226329 using transfection reagent MegaTran 2.0 (Cat# [TT210002]).