

Product datasheet for RC226325

SLC4A4 (NM_001134742) Human Tagged ORF Clone

Product data:

Product Type:	Expression Plasmids
Product Name:	SLC4A4 (NM_001134742) Human Tagged ORF Clone
Tag:	Myc-DDK
Symbol:	SLC4A4
Synonyms:	hhNMC; HNBC1; KNBC; kNBC1; NBC1; NBC2; NBCe1-A; pNBC; SLC4A5
Mammalian Cell Selection:	Neomycin
Vector:	pCMV6-Entry (PS100001)
E. coli Selection:	Kanamycin (25 ug/mL)
ORF Nucleotide Sequence:	>RC226325 representing NM_001134742 Red=Cloning site Blue=ORF Green=Tags(s)

TTTTGTAATACGACTCACTATAGGGCGCCGGGAATTCGTCGACTGGATCCGGTACCGAGGAGATCTGCC
GCC**CGATCGCC**

ATGGAGGATGAAGCTGTCTGGACAGAGGGGCTTCTTCCCTCAAGCATGTGTGTGATGAAGAAGAAGTAG
AAGGCCACCATAACATTTACATCGGAGTCCATGTGCCGAAGATTACAGGAGAAGGAGACGTCAACAAGAG
AAAGACAGGGCACAAAGAAAAGAAAGGAAAAGGAGAGAATCTCTGAGAAGTACTCTGACAAATCAGATATT
GAAAATGCTGATGAATCCAGCAGCAGCATCCTAAAACCTCTCATCTCCTGCTGCAGAACGCATCCGAT
TCATCTTGGGAGAGGAGGATGACAGCCAGCTCCCCCTCAGCTCTTACGGAAGTGGATGAGCTGCTGGC
CGTGGATGGGCAGGAGATGGAGTGGAAAGAAACAGCCAGGTGGATCAAGTTTGAAGAAAAAGTGGAAACAG
GGTGGGAAAGATGGAGCAAGCCCATGTGGCCACATTGTCCCTTCATAGTTTATTTGAGCTGAGGACAT
GTATGGAGAAAGGATCCATCATGCTTGTGCGGGAGGCTTCTTCTCTCCACAGTTGGTGGAGATGATTGT
TGACCATCAGATTGAGACAGGCCATTGAAACCTGAACCTAAGGATAAGGTGACCTATACTTTGCTCCGG
AAGCACCAGCATCAAACCAAGAAATCCAACCTTCGGTCCCTGGCTGACATTGGGAAGACAGTCTCCAGTG
CAAGTAGGATGTTTACCAACCTGATAATGGTAGCCAGCCATGACCCATAGGAATCTGACTTCTCCAG
TCTGAATGACATTTCTGATAAACCGGAGAAGGACCAGCTGAAGAATAAGTTTCATGAAAAAATTGCCACGT
GATGCAGAAGCTTCCAACGTGCTTGTGGGGAGGTTGACTTTTTGGATACTCCTTTTCATTGCTTTGTTA
GGCTACAGCAGGCTGTCATGCTGGGTGCCCTGACTGAAGTTCTGTGCCACAAGTTCTTGTTCATTCT
CTTAGGTCCTAAGGGGAAAGCCAAGTCCTACCACGAGATTGGCAGAGCCATTGCCACCCTGATGTCTGAT
GAGGTGTTCCATGACATTGCTTATAAAGCAAAGACAGGCACGACCTGATTGCTGGTATTGATGAGTTCC
TAGATGAAGTCATCGTCTTCCACCTGGGGAATGGGATCCAGCAATTAGGATAGAGCCTCCTAAGAGTCT
TCCATCTCTGACAAAAGAAAGAATATGTACTCAGGTGGAGAGAATGTTTCAGATGAATGGGGATACGCC
CATGATGGAGGTCACGGAGGAGGAGGACATGGGGATTGTAAGAATTGCAGCGAAGTGGACGGTTCTGTG
GTGGACTAATTAAGACATAAAGAGGAAAGCGCCATTTTTGCCAGTGATTTTTATGATGCTTTAAATAT
TCAAGCTCTTTCGCAATTCTTTCATTATCTGGCAACTGTAACCTAATGCTATCACTTTTGAGGAGTCT



CTTGGGGATGCCACTGACAACATGCAGGGCGTGTGGAGAGTTTCTGGGCACTGCTGTCTCTGGAGCCA
TCTTTTGCCTTTTTGCTGGTCAACCACTCACTATTCTGAGCAGCACCGGACCTGCCTAGTTTTGAGAG
GCTTCTATTTAATTTAGCAAGGACAATAATTTGACTATTTGGAGTTTCGCCTTTGGATTGGCCTGTGG
TCCGCCTTCTATGTCTCATTTTGGTAGCCACTGATGCCAGCTTCTTGGTTCAACTTCCACACGTTTCA
CGGAGGAGGGCTTTTCTCTCTGATTAGCTTCACTTTATCTATGATGCTTTCAAGAAGATGATCAAGCT
TGCAGATTACTACCCCATCAACTCCAACCTCAAAGTGGGCTACAACACTCTTTTTCTGTACCTGTGTG
CCACCTGACCCAGCTAATATCTCAATATCTAATGACACCACTGGCCCCAGAGTATTGCCAACTATGT
CTTCTACTGACATGTACCATAACTACTACCTTTGACTGGGCATTTTTGTGCGAAGAAGGAGTGTCAAATA
CGGAGGAAACCTCGTCCGGAACAACCTGTAATTTTGTCTGATATCACACTCATGCTTTTTATCCTCTTC
TTGGGAACCTACACCTCTTCCATGGCTCTGAAAAAATTCAAACCTAGTCCTATTTTTCCAACCACAGCAA
GAAAACCTGATCAGTGATTTTGCATTATCTTGTCCATTCTCATCTTTTGTGTAATAGATGCCCTAGTAGG
CGTGGACACCCCAAACTAATTGTGCCAAGTGAAGTCAAGCCAACAAGTCCAAACCGAGGTTGGTTCGTT
CCACCGTTTGGAGAAAACCCCTGGTGGGTGTCCTTGTGCTGCTATCCCGCTTTGTTGGTCACTATAC
TGATTTTTCATGGACCAACAAATTACAGCTGTGATTGTAACAGGAAAGAACAATAAATCAAGAAAGGAGC
AGGGTATCACTTGGATCTTTTTGGGTGGCCATCCTCATGGTTATATGCTCCCTCATGGCTTCCGTGG
TATGTAGCTGCTACGGTCACTCCATTGCTCACATCGACAGTTTGAAGATGGAGACAGAGACTTCTGCAC
CTGGAGAACAACCAAGTTTCTAGGAGTGAAGGAAACAAGAGTCACTGGAACCTTGTGTTTATTCTGAC
TGGTCTGTGAGTCTTTATGGCTCCCATCTTGAAGTTTATACCCATGCCTGTACTCTATGGTGTGTTCTG
TATATGGGAGTAGCATCCCTAATGGTGTGAGTTCATGGATCGTCTGAAGCTGCTTCTGATGCCTCTGA
AGCATCAGCCTGACTTCACTACCTGCGTCATGTTCTCTGCGCAGAGTCCACCTGTTCACTTTCCTGCA
GGTGTGTGCTGGCCCTGCTTTGGATCCTCAAGTCAACGGTGGCTGCTATCATTTTTCCAGTAATGATC
TTGGCATTGTAGCTGTGAGAAAAGGCATGGACTACCTTCTCCAGCATGACCTCAGCTCCTGGATG
ATGTCATTCCAGAAAAGGACAAGAAAAGAAGGAGGATGAGAAGAAAAGAAAAGAAGGAAAGTCT
GGACAGTGACAATGATGATGAGAAAAGATCACCAACATCCTTGAACGCCACACATCATGCTGATAAAATT
CCTTTCCTTCACTGCTCGGTATGCCAAGTCTCCTAGAACTCCAGTAAAAGTTGTGCTCAAATTAGAA
TAGAACTGAACCTGAAGACAATGATTATTTCTGGAGGAGCAAGGGAACAGAACTACATTG

ACGCGTACGCGGCCGCTCGAGCAGAACTCATCTCAGAAGAGGATCTGGCAGCAAATGATATCCTGGATT
ACAAGGATGACGACGATAAGGTTTAA

Protein Sequence:

>RC226325 representing NM_001134742
Red=Cloning site Green=Tags(s)

MEDEAVLDRGASFLKHKVDEEEVEGHHTIYIGVHVPKSYRRRRRHKRKTGHKEKKEKERISENYSKSDI
ENADESSSILKPLISPAERIRFILGEEDDSPAPPQLFTEDELAVDQEMEWKETARWIKFEEKVEQ
GGERWSKPHVATLSLHSLFELRTCMEKGSIMLDREASSLPQLVEMIVDHQIETGLLKPELKDKVYITLLR
KHRHQTKKSNLRLADIGKTVSSASRMFTNPDNGSPAMTHRNLTSSSLNDISDKPEKDQLKNKFMKKLPR
DAEASNVLVGEVDFLDTPFIQAVMLGALTEVPVPTFLFILLGPKGKAKSYHEIGRAIATLMSD
EVFHDIAKAKDRHDLIAGIDFLDEVIPLPGEWDPAIRIEPPKSLPSSDKRKNMYSGGENVQMNQDTP
HDGGHGGGGHGDCEELQRTGRFCGGLIKDIKRKAPFFASDFYDALNIQALSAIFLYLATVNTAIFGGL
LGDATDNMQVLESFLGTAVSGAIFCLFAGQPLTILSSTGPVLFERLLFNFSKDNDFYLEFRLWIGLW
SAFLCLILVATDASFLVQYFTRFTEEGFSSLSIFIFIYDAFKMIKLADYYPINSNFKVGYNTLFSCTCV
PPDPANISISNDTTLAPEYLPMSSTDMYHNTTFDWAFLSKKECKYGGNLVGNNCNFPDITLMSFILF
LGTYTSSMALKKFKTSPYFPTTARKLISDFAIILSILIFCVIDALVGVDTPKLIIPSEFKPTSPNRGWFV
PPFGENPWWVCLAAAIPALLVTILIFMDQQITAVIVNRKEHKLKKGAGYHLDLFWVAIILMVICSLMALPW
YVAATVISIAHIDSLKMETETSAPGEQPKFLGVREQRVTGLVFLTGLSVFMAPILKFIIPMPVLVGVFL
YMGVASLNGVQFMDRLKLLMPLKHQPDFIYLRHVPLRRVHLFTFLQVLCALLWILKSTVAAIIFPVMIL
LALVAVRKGMDYLFSDHLSFLDDVIPEKDKKKEDEKDKKDKKGLSDNDDEKDHQHSLNATHHADKI
PFLQSLGMPSPRTPVKVVPQIRIELEPEDNDYFWRSGTETTL

TRTRPLEQKLI SEEDLAANDILDYKDDDDKV

Chromatograms:

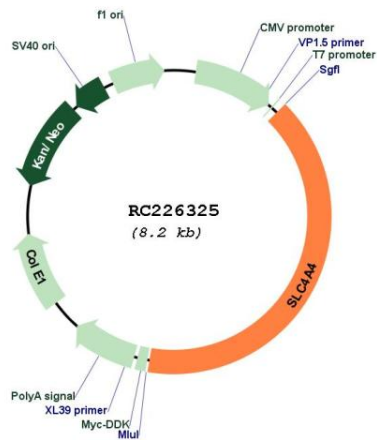
https://cdn.origene.com/chromatograms/mk8006_d03.zip

Protein Families: Druggable Genome, Transmembrane

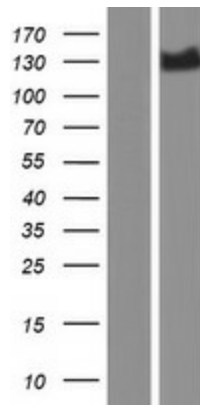
MW: 123 kDa

Gene Summary: This gene encodes a sodium bicarbonate cotransporter (NBC) involved in the regulation of bicarbonate secretion and absorption and intracellular pH. Mutations in this gene are associated with proximal renal tubular acidosis. Multiple transcript variants encoding different isoforms have been found for this gene. [provided by RefSeq, Oct 2008]

Product images:



Circular map for RC226325



Western blot validation of overexpression lysate (Cat# [LY427483]) using anti-DDK antibody (Cat# [TA50011-100]). Left: Cell lysates from untransfected HEK293T cells; Right: Cell lysates from HEK293T cells transfected with RC226325 using transfection reagent MegaTran 2.0 (Cat# [TT210002]).