

Product datasheet for RC226318

SUPT5H (NM_001130825) Human Tagged ORF Clone

Product data:

Product Type:	Expression Plasmids
Product Name:	SUPT5H (NM_001130825) Human Tagged ORF Clone
Tag:	Myc-DDK
Symbol:	SUPT5H
Synonyms:	SPT5; SPT5H; Tat-CT1
Mammalian Cell Selection:	Neomycin
Vector:	pCMV6-Entry (PS100001)
E. coli Selection:	Kanamycin (25 ug/mL)
ORF Nucleotide Sequence:	>RC226318 representing NM_001130825 Red=Cloning site Blue=ORF Green=Tags(s)

TTTTGTAATACGACTCACTATAGGGCGGCCGGAATTCGTCGACTGGATCCGGTACCGAGGAGATCTGCC
GCC**CGATCGCC**

ATGTCGGACAGCGAGGACAGCAACTTTCCGAGGAGGAGGACAGCGAGCGCAGCAGTGACGGCGAGGAGG
CCGAGGTAGACGAAGAGCGGGGAGTGCAGCGGGCAGTGAGAAAGAAGAAGAGCCTGAGGACGAAGAGGA
GGAGGAAGAGGAGGAGGAATACGATGAGGAAGAGGAGGAAGAAGATGATGACCGACCCCAAGAAACCC
CGCCATGGAGGCTTCATTCTGGACGAGGCTGATGTTGACGATGAGTATGAGGACGAGGACCAGTGGGAGG
ATGGAGCAGAGGACATTCTAGAGAAAGCCTCCAATATCGATAATGTTGTCCTGGATGAAGATCGTTCTGG
GGCTCGCCGCTGCAAAACCTCTGGAGGGACCAGCGAGAAGAAGAACTGGGCGAGTATTACATGAAGAAA
TACGCCAAGTCATCTGTGGGAGAGACGGTGTATGGAGGATCTGATGAGCTCTCAGACGACATCACCCAGC
AGCAGTGCTCCCAGGAGTCAAGGATCCCAATCTGTGGACTGTCAAATGTAAGATTGGGGAGGAACGGGC
CACGGCCATTTCTTGATGCGCAAGTTCATTGCCTACCAGTTCACAGACACGCCCTGCAGATCAAGTCA
GTAGTGGCACCAGAGCATGTGAAGGGCTACATCTACGTGGAGGCCACAAGCAGACCCACGTGAAGCAGG
CCATTGAGGGGTGGGCAACCTGCGGCTGGCTACTGGAACCAGCAGATGGTGCCATCAAGGAGATGAC
AGACGTGCTCAAAGTGGTGAAGGAGGTGGCCAACCTGAAACCAAAGTCTGGGTCCGCTCAAGCGGGGC
ATCTACAAGGATGACATTGCTCAGGTGGACTACGTGGAGCCAGCCAGAACACCATCTCCCTGAAGATGA
TCCCACGCATCGACTACGATCGCATCAAGGCCCGCATGAGCTTGAAGACTGGTTTGCCAAAAGGAAGAA
GTTAAGCGGCCCTCCACAGAGGCTGTTTGTGCTGAGAAGATCAGGTCCCTGGGGGTGATGTTGCCTCT
GATGGTGACTTCTCATCTTTGAGGGGAACCGTTACAGCCGGAAGGGCTTTCTGTTCAAGAGCTTCGCCA
TGTCTGCTGTGATCACGGAGGGTGTGAAGCCAACACTCTCTGAGCTGGAAAAGTTTGAGGACCAGCCAGA
GGGCATTGACCTGGAGGTGGTACTGAGAGCACAGGGAAGGAGCGGGAGCACAACCTTCCAACCTGGGGAC
AACGTGGAGGTCTGTGAGGGTGAAGTCAACCTGCAGGGCAAGATCCTCAGCGTGGATGGCAACAAGA
TCACCATCATGCCAAGCATGAGGACCTCAAGGACATGTTGGAGTCCCAGCCCAGGAACCTAGAAAATA
CTTCAAGATGGGGACCAGTGAAGGTGATTGCTGGCCGATTCGAGGGCGACACAGGCCTCATTGTCCGG



[View online »](#)

GTGGAGGAGAATTCGTTATCCTGTTCTCTGACCTCACCATGCATGAGCTGAAGGTGCTCCCCGGGACC
 TGCAGCTCTGCTCAGAGACAGCATCAGGTGTGGATGTTGGGGCCAGCATGAATGGGGCAGCTGGTGCA
 GCTGGATCCCCAGACTGTGGGTGCATCGTGCGACTAGAACGGGAGACCTTCCAGGTGCTGAACATGTAC
 GGGAAAGTGGTACTGTCAGACATCAGGCTGTGACCCGGAAGAAGGACAACCGCTTTGCTGTGGCCTTG
 ACTCAGAGCAGAACAATCCATGTGAAAGACATCGTTAAGGTCATTGATGGCCCCACTCAGGCCGAGA
 AGGGGAGATTGCCATCTCTCCGAAGCTTCGCTTCTACATTGCAAGAACTGGTGGAGAACGGGGG
 ATGTTTGTCTGCAAGACCCGACCTGGTGTGCTGGCTGGGGCTCAAAGCCCCGTGATGTGACCACTTCA
 CCGTGGGTGGCTTTCGCGCTATGAGTCCCGGATCAGCAGCCCCATGCACCCAGTGTGGAGGTACGG
 TGGCGGCTTGTAGCCAGGTGGCGGAGTGGTGGCATGAGCAGGGGCCGGGGCCGAGGGACAACGAA
 CTCATCGGCCAGACCGTGCATCTCCCAGGGCCCTACAAAGGCTACATCGGTGTGGTAAAGATGCCA
 CAGAGTCCACGGCCGTGTGGAGCTGCACTCCACCTGCCAGACCATCTCTGTGGACCGTACGCGCTCAC
 CACGGTGGGCTCACGGCGCCCGGGCGGATGACCTCGACCTATGGGAGGACGCCCATGTATGGCTCCAG
 ACGCCCATGTATGGCTCTGGCTCCGAACACCCATGTACGGCTCACAGACACCCCTCCAGGATGGTACCC
 GCACCCACACTACGGCTCACAGACGCCCTGCATGATGGCAGCCGCACTCCTGCCAGAGTGGGGCCTG
 GGACCCCAACAACCCCAACACGCGCTCACGGGCTGAGGAAGAATATGAGTATGCTTTCGATGATGAGCCC
 ACCCGTCCCCGAGGCTATGGGGAAACCCCAATCCCAAAACACCTGGCTACCCAGACCCCTCGTCCC
 CACAGGTCAACCCACAATACAACCCGACAGCCAGGGACGCGGCCATGTACAACACAGACCAGTTCTC
 TCCTATGCTGCCCCCTCCCCAAGGTTCTACCAGCCAGCCAGCCAGCCAGAGCTACCACCAGGTG
 GCGCAAGCCAGCAGGCTACCAGAATACCCACTCCCCAGCCAGCTACCACCTACACCGTGCCCATGG
 CCTATCAGGCTAGCCCCAGCCGAGCCCGTGGCTACAGTCTATGACACCTGGAGTCCCTCCCTGG
 TGGCTACAACCCACACAGCCAGGCTCAGGCATCGAGCAGAACTCCAGCGACTGGTAACCACTGACATT
 CAGGTGAAGGTGCGGGACACCTACCTGGATACACAGGTGGTGGGACAGACAGGTGTCATCCGAGTGTCA
 CGGGGGGATGTGCTCTGTGTAAGGACAGTGAAGGTTGTCAGCATTTCAGTGAACCTGGA
 GCCTATACCCCCACCAAGAACAAGGTGAAAGTATCCTGGGCGAGGATCGGAAGCCACGGGCGT
 CACTGAGCATTGATGGTGGAGTGGCATTGTCCGATGGACCTTATGAGCAGCTCAAGATCCTCAACC
 TCCGCTTCTGGGAAGCTCCTGGAAGCC

ACGCGTACGCGGGCCGCTCGAGCAGAACTCATCTCAGAAGAGGATCTGGCAGCAAATGATATCCTGGATT
 ACAAGGATGACGACGATAAGGTTTAA

Protein Sequence:

>RC226318 representing NM_001130825
 Red=Cloning site Green=Tags(s)

MSDSEDSNFSEEDSERSSDGEEAEVDEERRSAAGSEKEEEPEDEEEEEEEYDEEEEEEDDRPPKPK
 RHGGFILDADVDEYEDQWEDGAEDILEKASNIDNVLDED RSGARRLQNLWRDQREELGEYMYKK
 YAKSSVGETVYGGSDDELSDITQQQLPGVKDPNLWTVKCKIGEERATAISLMRKFIA YQFTDPLQIKS
 VVAPEHVKGYYIYVEAYKQTHVKQAIIEGVNLRGYNQMVPIKEMTDVLKVVKEVANLKP KSWRLKRG
 IYKDDIAQVDYVEPSQNTISLKMIPRIDYDRIKARMSLKDWF AKRKKFKRPPQRLFDAEKIRSLGGDVAS
 DGDFLIFEGNRYSRKGLFKSFAMSAVITEGVKPTLSELEKFEQPEGIDLEVVTESTGKEREHNFQPGD
 NVEVCEGELINLQGKILSV DGNKITIMPKHEDLKDMLFPAQELRKYFKMGDHVKVIAGRFEGDTGLIVR
 VEENFVILFSDLTMHELKVLPRDLQLCSETASGV DVGQHEWVGLVQLDPQTVGVIVRLERETFVQLNMY
 GKVVTVRHQAVTRKKNRFAVALDSEQNNIHVKDIVKVIDGPHSGREGEIRHLFRSFAFLHCKKL VENG
 MFVCKTRHLVLAGGSKPRDVTNFVGGFAPMSPRISSPMHPSAGGQRGGFGSPGGSGGMSRGRRRDNE
 LIGQTVRISQGPYKGYIGVVKDATESTARVELHSTCQTISVDRQLTTVGSRRPGGMTSTYGRTPMYGSQ
 TPSPQAYGGTPNPQTPGYDPSPQVNPQYNPQTPGTPAMYNTDQFSPYAAPSPQGSYQPSPPQSYHQV
 APSPAGYQNTHPASYHTPSPMAYQASPSVPGYSPMTPGAPSPGGYNPHTPGSGIEQNSSDWTTDI
 QYKVRDYLDTQVVGQTVIRSVTGMCSVYLKDKSEKVVSI SSEHLEPITPTKNNKVKVILGEDREATG
 LLSIDGEDGIVRMDLDEQLKILNLRFLGKLL EA

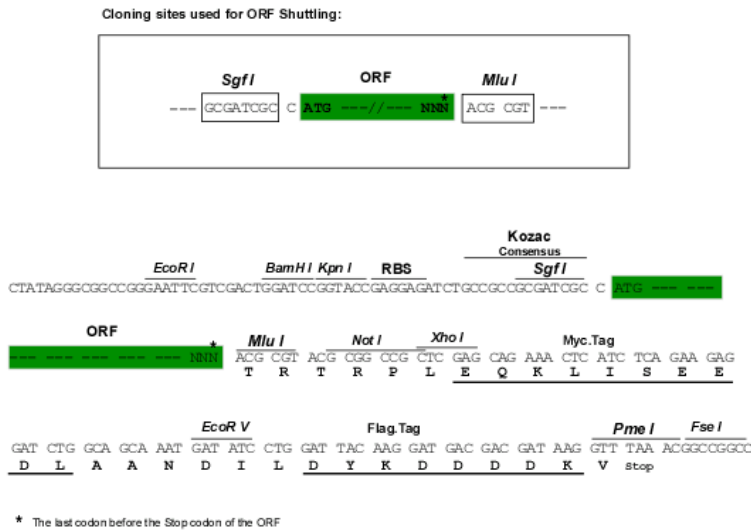
TRTRPLEQKLI SEEDLAANDILDYKDDDDKV

Chromatograms:

https://cdn.origene.com/chromatograms/mk8031_g06.zip

Restriction Sites: SgfI-MluI

Cloning Scheme:



ACCN: NM_001130825

ORF Size: 3249 bp

OTI Disclaimer: The molecular sequence of this clone aligns with the gene accession number as a point of reference only. However, individual transcript sequences of the same gene can differ through naturally occurring variations (e.g. polymorphisms), each with its own valid existence. This clone is substantially in agreement with the reference, but a complete review of all prevailing variants is recommended prior to use. [More info](#)

OTI Annotation: This clone was engineered to express the complete ORF with an expression tag. Expression varies depending on the nature of the gene.

Components: The ORF clone is ion-exchange column purified and shipped in a 2D barcoded Matrix tube containing 10ug of transfection-ready, dried plasmid DNA (reconstitute with 100 ul of water).

Reconstitution Method:

1. Centrifuge at 5,000xg for 5min.
2. Carefully open the tube and add 100ul of sterile water to dissolve the DNA.
3. Close the tube and incubate for 10 minutes at room temperature.
4. Briefly vortex the tube and then do a quick spin (less than 5000xg) to concentrate the liquid at the bottom.
5. Store the suspended plasmid at -20°C. The DNA is stable for at least one year from date of shipping when stored at -20°C.

RefSeq: [NM_001130825.1](#), [NP_001124297.1](#)

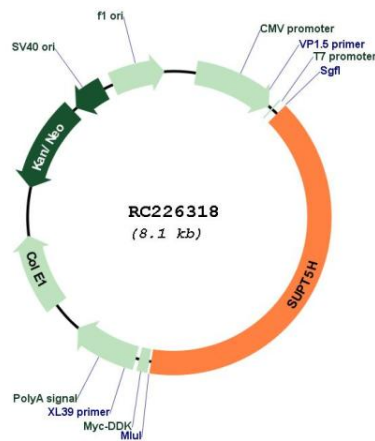
RefSeq ORF: 3252 bp

Locus ID: 6829

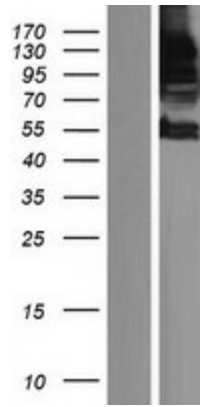
UniProt ID: [O00267](#)

Cytogenetics:	19q13.2
Protein Families:	Transcription Factors
MW:	120.3 kDa
Gene Summary:	<p>Component of the DRB sensitivity-inducing factor complex (DSIF complex), which regulates mRNA processing and transcription elongation by RNA polymerase II. DSIF positively regulates mRNA capping by stimulating the mRNA guanylyltransferase activity of RNGTT/CAP1A. DSIF also acts cooperatively with the negative elongation factor complex (NELF complex) to enhance transcriptional pausing at sites proximal to the promoter. Transcriptional pausing may facilitate the assembly of an elongation competent RNA polymerase II complex. DSIF and NELF promote pausing by inhibition of the transcription elongation factor TFIIIS/S-II. TFIIIS/S-II binds to RNA polymerase II at transcription pause sites and stimulates the weak intrinsic nuclease activity of the enzyme. Cleavage of blocked transcripts by RNA polymerase II promotes the resumption of transcription from the new 3' terminus and may allow repeated attempts at transcription through natural pause sites. DSIF can also positively regulate transcriptional elongation and is required for the efficient activation of transcriptional elongation by the HIV-1 nuclear transcriptional activator, Tat. DSIF acts to suppress transcriptional pausing in transcripts derived from the HIV-1 LTR and blocks premature release of HIV-1 transcripts at terminator sequences.[UniProtKB/Swiss-Prot Function]</p>

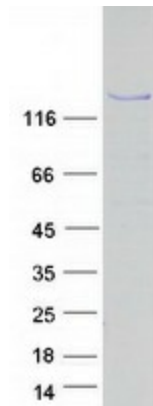
Product images:



Circular map for RC226318



Western blot validation of overexpression lysate (Cat# [LY427276]) using anti-DDK antibody (Cat# [TA50011-100]). Left: Cell lysates from untransfected HEK293T cells; Right: Cell lysates from HEK293T cells transfected with RC226318 using transfection reagent MegaTran 2.0 (Cat# [TT210002]).



Coomassie blue staining of purified SUPT5H protein (Cat# [TP326318]). The protein was produced from HEK293T cells transfected with SUPT5H cDNA clone (Cat# RC226318) using MegaTran 2.0 (Cat# [TT210002]).