

Product datasheet for RC226317

ANR52 (ANKRD52) (NM_173595) Human Tagged ORF Clone

Product data:

Product Type:	Expression Plasmids
Product Name:	ANR52 (ANKRD52) (NM_173595) Human Tagged ORF Clone
Tag:	Myc-DDK
Symbol:	ANR52
Synonyms:	ANKRD33
Mammalian Cell Selection:	Neomycin
Vector:	pCMV6-Entry (PS100001)
E. coli Selection:	Kanamycin (25 ug/mL)
ORF Nucleotide Sequence:	>RC226317 representing NM_173595 Red=Cloning site Blue=ORF Green=Tags(s)

TTTTGTAATACGACTCACTATAGGGCGGCCGGAATTCGTCGACTGGATCCGGTACCGAGGAGATCTGCC
GCC**CGATCGC**C

ATGGGGATCCTCAGCATCACGGACCAGCCGCCCTGGTCCAGGCCATCTTAGCCGAGATGTGGAGGAAG
TGCGTTCCCTACTCTCGCAGAAGGAGAACAATGTGCTGGACCAAGAGAGGCCAACTCCATTGCATGC
TGCTGCCTACGTAGGCGATGTCCCATCCTCCAGTTGCTACTGATGTCAGGTGCTAATGTCAATGCTAAG
GACACACTGTGGCTGACCCCTTTCATCGTGTCTGCCTCCGAAACGAGAAGGTGCTGGGCTGCTGC
TGGCACATTCAGCAGATGTAATGCCGGGACAAGCTGTGGCAGACCACTGCATGTGGCTGCTGCCAA
CCGGGCCACCAAGTGTGCTGAGGCTCTGGCACCCCTGTTGAGCAGCCTAACGTGGCTGACAGGAGCGGG
CGCAGTGTCTGCACCATGCAGTGCATAGTGGGCATCTTGAGACGGTGAACCTGCTCCTCAACAAGGGAG
CCAGCCTGAATGTCTGTGACAAAAGGAGCGGCAGCCTCTGCATTGGGCAGCTTTTCTAGGGCACTTGGG
GGTCTCTAAAAGTCTGGTGGCACGGGAGCAGACCTCGGCTGCAAGGACCGCAAGGGCTATGGGCTGCTC
CATACAGCTGCTGCCAGTGGCCAGATTGAAGTGGTGAAGTACCTGCTTCGGATGGGAGCGGAGATCGATG
AACCCAATGCTTTTGAAACACAGCTTTGCACATCGCTGCTACCTGGCCAGGATGCTGTGGCTATTGA
GCTGGTGAATGCCGGAGCCAATGTCAACCAGCCGAATGACAAGGGCTTCACGCCACTGCATGTGGCTGCA
GTCTCCACCAATGGCGCTCTCTGCTTGGAGCTACTGGTTAATAATGGGGCTGACGTCACCTACCAGAGCA
AAGAAGGGAAAAGTCTCTGCACATGGCTGCAATCCATGGCCGTTTCACACGCTCCAGATCCTCATCCA
GAATGGCAGCGAGATTGATTGTGCCGACAAATTTGGGAACACGCCACTGCATGTGGCTGCTCGATATGGA
CACGAGCTGCTCATCAGCACCTCATGACCAATGGCGCAGATACCGCCGGCGTGGCATCCATGACATGT
TCCCCCTGCACTTAGCTGTTCTCTTTGGATTCTCTGACTGTTGTCGTAAGCTTCTTCTCAGGTGAGTT
GTACAGCATTGTCTTCACTCAGCAATGAGCATGTGCTTTCAGCTGGGTTTGACATCAATACACCTGAC
AACCTTGGCCGTACCTGTCTTCATGCTGCTGCTCCGGAGGGAATGTTGAATGTCTTAATTTGCTGTTGA
GCAGTGGAGCTGACTTGAGGAGGAGGACAAATTTGGCAGGACCCACTGCACTATGCAGCTGCTAACGG
TAGCTACCAGTGTGCAGTAACATTGGTACTGCTGGGGCAGGTGTCAACGAGGCCACTGTAAGGCTGC



[View online »](#)

TCTCCCCTCCACTACGCTGCCGCTTCTGACACTTACAGGAGAGCGGAACCCCATACACCTTCCAGCCATG
 ATGCCGAAGAGGACGAGCCACTGAAGGAGTCCCGCAGGAAGGAGGCCCTTCTTCTGTCTGGAGTTCTACT
 GGATAACGGTGCAGACCCCTCCCTGCGGGACAGGCAGGGCTACACAGCTGTGCACATGCAGCCGCCTAT
 GGCAACAGACAGAACCTCGAACTGCTCTTAGAAATGTCCTTTAACTGCCTGGAGGATGTGGAGAGCACCA
 TTCCAGTCAGCCCTTTGCACTTAGCTGCCTACAACGGTCACTGTGAAGCCTTGAAGACGCTGGCGGAGAC
 GCTGGTGAATCTGGACGTAAGGGACCACAAGGGCCGACCGCACTCTTCTGGCCACGGAGCGCGCTCT
 ACTGAGTGTGTGGAGGTGCTTACAGCCACCGCGCCTCTGCCCTCATCAAGGAGCGCAAGCGCAAGTGGA
 CACCCCTGCACGCTGCTGCTGCCTCTGGCCACACTGACTCCCTGCACTTGTGATCGACAGTGGGGAACG
 AGCTGACATCACAGATGTCATGGATGCCTATGGACAGACCCCACTGATGCTGGCCATCATGAATGGCCAT
 GTGGACTGTGTACATCTGCTGCTAGAGAAAGGATCCACAGCTGATGCTGCTGACCTCCGGGGCCGCACTG
 CCCTCCACCGGGGCGAGTACTGGCTGTGAGGACTGCCTGGCTGCCCTGCTGGACCACGACGATTTGT
 GCTGTGCCGAGACTTTAAGGGCCGACGCCATTACCTGGCCTCAGCCTGTGGCCACACTGCAGTACTG
 CGGACCCTGCTGCAGGCTGCCCTTCCACAGATCCCTGGATGCCGGGTGGATTACAGCGGATACTCGC
 CCATGCACTGGGCTCCTACACTGGACATGAAGATTGCTGGAGTTGTTACTTGAACACAGCCCGTTTTTC
 GTACCTGGAAGGAAACCCCTTCACTCCTTTGCACTGTGCAGTGATTAATAACCAAGACAGCACACAGAG
 ATGCTACTGGGAGCTCTGGGTGCCAAGATTGTGAACAGCCGAGATGCCAAGGACGGACCCCTTCACG
 CCGCTGCCTTCGCGGACAATGTCTCTGGGCTCCGGATGCTGCTGCAGCATCAAGCTGAGGTGAACGCCAC
 TGACCACACTGGCCGCACTGCGCTCATGACGGCGGCTGAGAACGGGCAGACCCGCTGCTGTGGAATTTCTG
 CTGTATCGAGGGAAGGCAGACCTTACTGTGTTGGATGAGAACAAGAACACGGCCCTCCACTTGGCTTGTA
 GCAAGGGCCATGAGAAATGTGCCCTCATGATCCTGGCAGAAACCAAGACCTTGGCCTTATCAATGCTAC
 CAACAGTGCCTGCAGATGCCACTCCACATTGCTGCCCGAATGGTCTAGCTTCTGTGGTACAGGCCCTG
 CTGAGTCATGGGGCCACAGTGTGGCTGTGGATGAAGAAGGTACACCCCAAGCACTGGCCTGTGCCCCCA
 ACAAGATGTGGCAGACTGCCTGGCCTTGATCCTTTCCACCATGAAGCCTTTCCACCCAAAGGACGCCGT
 CAGTCCTTTCAGCTTCAGCTGCTCAAGAAGTGCAGCATTGCAGCCGCAAGACGGTGGGTGGCTGCGGC
 GCCCTGCCCATGGGCTCCTGCCCTACAGCCAGGAGCGGCCCGGCCATTGGGTTAGATGGCTGCT
 ACTCTGAG

ACGCGTACGCGGGCCGCTCGAGCAGAACTCATCTCAGAAGAGGATCTGGCAGCAAATGATATCCTGGATT
 ACAAGGATGACGACGATAAGGTTTAA

Protein Sequence:

>RC226317 representing NM_173595
 Red=Cloning site Green=Tags(s)

MGILSITDQPPLVQAFSRDVEEVSRLLSQKENINVLDQERRTPLHAAAYVGDVPIQLLLMSGANVNAK
 DTLWLTPHRAAASRNEKVLGLLLHSAADVNRDKLWQTPHVAANRATKCAEALAPLLSSLNVADRSR
 RSALHHAHVHSGHLETVNLLLNGASLNVCDKKERQPLHWAFLGHLEVLKLLVARGADLGCKDRKGYLL
 HTAAASGQIEVVKYLLRMGAEIDEPNAGNTALHIAACYLGQDAVAIELVNAGANVNQPNKGFPLHVAA
 VSTNGALCLELLVNNGADVNYQSKEGKSPLHMAAIHGRFTRSQILIQNGSEIDCADKFGNTPLHVAARYG
 HELLISTLMTNGADTARRGIHDMFPLHLAVLFGFSDCCRKLLSSGQLYSIVSSLNEHVLVAGFDINTPD
 NLGRTCLHAAASGGNVECLNLLLSSGADLRRRDKFGRTPHLYAAANGSYQCAVTLVTAGAGVNEADCKGC
 SPLHYAAASDTYRRAEPHTPSSHDAEEDEPLKESRRKEAFFCLEFLLDNGADPSLRDRQGYTAVHYAAAY
 GNRQNLLELLLEMSFNCLDVESTIPVSPLHLAAYNGHCEALKTLAETLVNLDVDRDHKGRALFLATERGS
 TECVEVLTAHGASALIKERKRKWTPLHAAAASGHTDSLHLLIDSGERADITDVMDAYGQTPLMLAIMNGH
 VDCVHLLLEKGSTADAADLRGRTALHRGAVTGCEDCLAALLDHDAFVLCRDFKGRTPIHLASACGHAVL
 RTLLQAALSTDPLDAGVDYSGYSPMHWASYTGHEDCLELLEHSPFSYLEGNPFTPLHCAVINNQDSTTE
 MLLGALGAKIVNSRDAKGRTPHAAAFADNVSGLRMLLQHQAENVNATDHTGRTALMTAAENGQTAVEFL
 LYRGKADLTVLDENKNTALHLACSKGHEKCALMILAETQDLGLINATNSALQMPLHIAARNGLASVVQAL
 LSHGATVLAVDEEGHTPALACAPNKDVADCLALILSTMKPFPPKDAVSPFSFSLKKNCSIAAAKTVGGCG
 ALPHGASCPYSQERPGAIGLDGCYSE

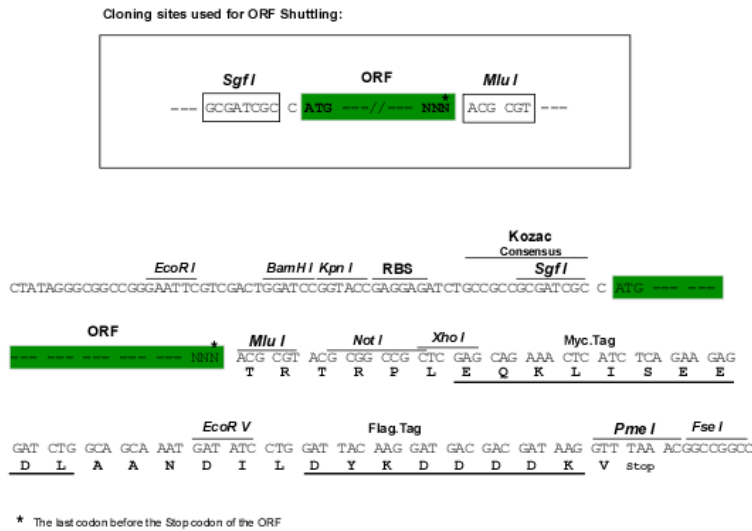
TRTRPLEQKLISEEDLAANDILDYKDDDDKV

Chromatograms:

https://cdn.origene.com/chromatograms/mk8031_g07.zip

Restriction Sites: SgfI-MluI

Cloning Scheme:



ACCN: NM_173595

ORF Size: 3228 bp

OTI Disclaimer: The molecular sequence of this clone aligns with the gene accession number as a point of reference only. However, individual transcript sequences of the same gene can differ through naturally occurring variations (e.g. polymorphisms), each with its own valid existence. This clone is substantially in agreement with the reference, but a complete review of all prevailing variants is recommended prior to use. [More info](#)

OTI Annotation: This clone was engineered to express the complete ORF with an expression tag. Expression varies depending on the nature of the gene.

Components: The ORF clone is ion-exchange column purified and shipped in a 2D barcoded Matrix tube containing 10ug of transfection-ready, dried plasmid DNA (reconstitute with 100 ul of water).

Reconstitution Method:

1. Centrifuge at 5,000xg for 5min.
2. Carefully open the tube and add 100ul of sterile water to dissolve the DNA.
3. Close the tube and incubate for 10 minutes at room temperature.
4. Briefly vortex the tube and then do a quick spin (less than 5000xg) to concentrate the liquid at the bottom.
5. Store the suspended plasmid at -20°C. The DNA is stable for at least one year from date of shipping when stored at -20°C.

RefSeq: [NM_173595.4](#)

RefSeq ORF: 3231 bp

Locus ID: 283373

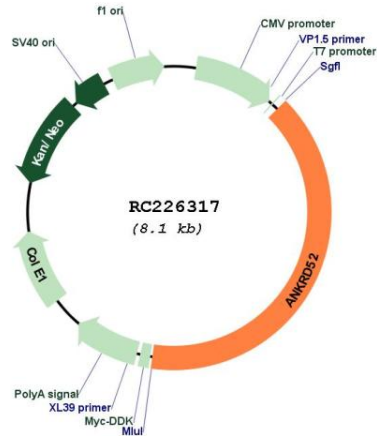
UniProt ID: [Q8NB46](#)

Cytogenetics: 12q13.3

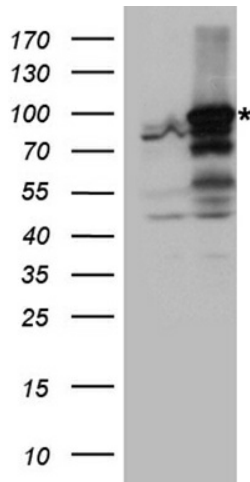
MW: 114.9 kDa

Gene Summary: Putative regulatory subunit of protein phosphatase 6 (PP6) that may be involved in the recognition of phosphoprotein substrates.[UniProtKB/Swiss-Prot Function]

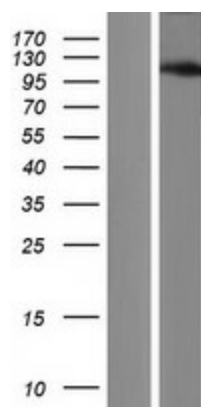
Product images:



Circular map for RC226317



HEK293T cells were transfected with the pCMV6-ENTRY control (Cat# [PS100001], Left lane) or pCMV6-ENTRY ANKRD52 (Cat# RC226317, Right lane) cDNA for 48 hrs and lysed. Equivalent amounts of cell lysates (5 ug per lane) were separated by SDS-PAGE and immunoblotted with anti-ANKRD52 antibody (Cat# [TA890099]). Positive lysates [LY430405] (100ug) and [LC430405] (20ug) can be purchased separately from OriGene.



Western blot validation of overexpression lysate (Cat# [LY430405]) using anti-DDK antibody (Cat# [TA50011-100]). Left: Cell lysates from untransfected HEK293T cells; Right: Cell lysates from HEK293T cells transfected with RC226317 using transfection reagent MegaTran 2.0 (Cat# [TT210002]).