

Product datasheet for **RC226316**

RIPOR2 (NM_014722) Human Tagged ORF Clone

Product data:

Product Type:	Expression Plasmids
Product Name:	RIPOR2 (NM_014722) Human Tagged ORF Clone
Tag:	Myc-DDK
Symbol:	RIPOR2
Synonyms:	C6orf32; DFNB104; DIFF40; DIFF48; FAM65B; MYONAP; PL48
Vector:	pCMV6-Entry (PS100001)
E. coli Selection:	Kanamycin (25 ug/mL)
Cell Selection:	Neomycin
ORF Nucleotide Sequence:	>RC226316 representing NM_014722 Red=Cloning site Blue=ORF Green=Tags(s)

TTTTGTAATACGACTCACTATAGGGCGCCGGAATTCGTCGACTGGATCCGGTACCGAGGAGATCTGCC
GCC**CGATCGC**C

ATGTTGGTAGGATCCCAGTCTTTTTCGCCTGGAGGGCCAATGGGATCATTAGAAGCCAGTCCTTTGCGG
GTTTCAGCGGCCCTCCAGGAAAGGCGATCCAGGTGTAACCTTCATTGAAAATTCCTCCGCTCTCAAGAA
GCCTCAGGCCAAACTGAAGAAAATGCACAATTTAGGCCACAAAAACAACAATCCCCCAAAGAGCCTCAG
CCTAAAAGGGTGAAGAAGTCTACAGGGCCTTGAAAAATGGACTTGATGAATATCTGGAGGTTACCAGA
CGGAGCTGGACAAGTTGACAGCTCAGTTAAAAGATATGAAAAGAACTCTCGCCTGGGTGTACTGTATGA
CCTAGACAAGCAAATTAACAATTGAAAGATACATGAGACGCCTGGAGTTTCATATAAGTAAGGTAGAT
GAACTCTATGAAGCTTATTGTATCCAGCGACGCCTCCAGGATGGTGCCAGCAAAAATGAAGCAAGCCTTCG
CAACATCCCCTGCCAGCAAAGCTGCCGGGAGAGTCTGACAGAGATCAATCGGAGCTTCAAGGAGTACAC
AGAGAATATGTGCACCATTGAAGTGGAGCTAGAGAATCTGCTGGGAGAATTCTCCATCAAGATGAAAGGT
CTGGCTGGCTTTGCACGCCTCTGTCTGGAGATCAATATGAAATTTTCATGAAGTATGGCCGGCAGCGGT
GGAAACTGAAAGGCAAAAATAGAAGTAAATGGCAAGCAGAGCTGGGATGGAGAAGAAACAGTTTTTTCTGCC
CCTGATAGTTGGTTTCATCTCCATCAAGGTCACGGAGCTCAAAGGCTAGCAACTCACATCCTGGTAGGT
AGCGTGACCTGTGAGACCAAAGAGCTGTTTGCAGCCGACCTCAGGTAGTGGCTGTGACATCAATGACC
TTGGTACCATCAAAGTGAACCTGAAAATCACCTGGTATCCATTTGACGTGGAGGACATGACCGCATCCTC
AGGCGCTGGGAACAAGGCAGCAGCCCTCAGAGGAGAATGTCCATGTACAGCCAGGATACCCCGAAACG
CCCACCTTCAAAGACCACTCCTTCTTTAGGTGGCTGCATCCTTCCCAGACAAGCCAGGCGGCTGTCTG
TCTTGAGTGCCTTGAAGACACTTTCTTTGCCAAGCTGCACCGCAGCCGCTCCTTCAGTGACCTGCCCTC
CCTCAGGCCGAGTCCCAAGGCCGTGCTAGAGCTCTATTCAAATCTACCTGATGACATCTTTGAAAATGGA
AAGGCAGCCGAGGAGAAAATGCCACTGTCGCTCAGCTTTCAGTGACCTGCCAACGGGACTGCGCCCTCA
CCTCCCCTCAACAGGCTCCCTTCCAACCTCAACAAATCCAGAAATTACCATCACCCCTCGGGAGTTTAA
CCTCAGCAGCTTGGCCTCCAGAATGAGGGTATGGATGACACCAGCTCAGCATCTTCCAGGAACTCCCTG
GGAGAAGGCCAAGAGCCAAAGTACACCTGAAGGAGGAAGACCCAGAGGAGCCAGAAAACCTGCCTCGG



[View online »](#)

CCCCATCTGAGGCTTGCCGCCGACAGTCCCTCAGGTGCTGGGGCTGAGCACCTGTTCTTGAGAATGATGT
 TGCAGAAGCACTTCTGCAAGAGTCTGAGGAGGCCTCTGAGCTCAAGCCTGTGAACTGGACACTTCGGAA
 GGAACATCACAAAGCAGCTGGTCAAGAGGCTCACATCTGAGAGGTGCCAATGGCCACAGACAGGCTGC
 TCTCTGAGGGTCTGTTGGTGGAGAATCTGAAGGCTGCAGATCCTTTCTAGATGGAAGCTTAGAGGATGC
 TTTTAAATGGGCTTTTACTTGCAATAGAACCACATAAAGAGCAGTATAAAGAGTTTCAGGATCTGAACAA
 GAAGTCATGAATTTGGATGATATTCTAAATGCAAGCCAGCAGTAAGCCGAGCAGGCTCTCCAGTTTAA
 TGCTCACAGTTGAAAGTCTTTAGAAAGCTTTGATTTCCCTGAACACCTCTGATTTTGACGAGGAGGAGGA
 TGGTGATGAGGTTTGAATGTTGGCGGAGGTGCTGACTCAGTATTTTCAGACACTGAGACTGAGAAACAC
 AGTTACAGGTCGGTTCACCCAGAAGCCAGGGGCATCTCAGTGAAGCGCTCACTGAAGACACAGGAGTTG
 GGACCAGTGTGGCAGGAAGTCTCTCCACTGACCACAGGCAACGAGAGCCTGGACATCACCATCGTCAG
 GCACCTCCAGTACTGCACCCAACCTGTCAGCAAAATTGTTTTCTCAAGCAAAAACCCATTGTGGCAAGA
 AGTCTCTTAGAGAAGCTTTCTAGGCAGATCCAAGTATGAGAGAACTCGCAGCTGTCAGTATGAGAACA
 TAGGAAATATCAGTCTGTTGTGGAAGCCATACCAGAATTTCAAAAAAGCTGTCTTTGCTGTCATTCTG
 GACCAAGTGTGCAGCCCTGTTGGTGTCTACCACAGCCAGCGGACAGAGTATGAAGCAGCTGGAGGCC
 AGCTTTGCCAGAAGTGTCAACAAAGAATATCCAGGACTTGACAGCCAGTGTTCGAACCTGGTGTCCC
 AAATTCTGGACCGGGCTGAGCCTCTGCTTCTCCAGCCTGTCCCTCGGAAGTCTGACTGTTTTCCAGTA
 TTACAGTTACTTCACCAGCCACGGCGTCAGTGACCTGGAGAGTTACCTGAGCCAGCTGGCCAGGCAAGT
 TCCATGGTTCAGACTCTGCAATCACTAAGAGATGAAAACTGCTACAAACCATGAGTGACCTTGCTCCCA
 GCAACCTCCTGGCCAGCAGGAAGTACTCAGGACTCTGGCTCTGCTATTAACCAGAGAGGACAACGAAGT
 TAGTGAGGCTGTGACGCTTACTTGGCAGCAGCCTCCAAAAATCAGCATTTCAGGGAAAAGGCTTGTCTC
 TATTACTGTGAAGCACTAACAAAGACAAACCTCCAGCTCCAGAAAGCAGCTTGCCTGGCTCTGAAAATCC
 TTGAGGCTACTGAAAGCATTAAAATGCTGGTGACATTGTGTCAATCTGATACTGAAGAAATCAGAAATGT
 GGCCTCAGAAACCTCTGTCTCTGGGAGAAGATGGGCGGCTGGCATATGAACAATTGGACAAATTTCT
 CGAGACTGTGTTAAAGTCGGAGGTGCTCATGGAAGTGAAGTTGCCACAGCCTTT

ACGCGTACGCGGCCGCTCGAGCAGAACTCATCTCAGAAGAGGATCTGGCAGCAATGATATCCTGGATT
 ACAAGGATGACGACGATAAGGTTTAA

Protein Sequence:

>RC226316 representing NM_014722
 Red=Cloning site Green=Tags(s)

MLVGSQSFSPGGPNGIIRSQSFAGFSGLQERRSRCNSFIENSSALKKPQAKLKKMHNHGHKNNPPKEPQ
 PKRVEEYRALKNGLDEYLEVHQTELDKLTAQLKDMKRNSRLGVLVDLQIKTIERYMRRLEFHISKVD
 ELYEAYCIQRRQLQDGASKMKQAFATSPASKAARESLTEINRSFKEYTENMCTIEVELENLLGEFSIKMKG
 LAGFARLCPGDQYEIFMKYGRQRWKLKGLIEVNGKQSWDGEETVFLPLIVGFISIKVTELKGLATHILVG
 SVTCETKELFAARPOVVAVDINDLGTIKLNLEITWYFPDVEDMTASSGAGNKAALQRRMSMYSQGTPEP
 PTFKDHFFRWLHPSDPKPRRLSVLSALQDTFFAKLHRSRFSDLPSLRSPKAVLELYSNLPDDIFENG
 KAAEEKMPLSLSFDLPNGDCALTSBSTGSPSNSTNPEITITPAEFNLSSLASQNEGMDTSSASSRNSL
 GEGQEPKSHLKEEDPEEPRKPASAPSEACRRQSSGAGAEHLFLENDVAEALLQESEEASELKPVELDTSE
 GNITKQLVKRLTSAEVPMATDRLLSEGSVGGSESGCRSFLDGSLEDAFNGLLLALEPHKEQYKEFQDLNQ
 EVMNLDLILKCKPAVSRSSSSLSLTVESALESFDFLNTSDFDEEEDGDEVNCGGGADSVFSDTETEKH
 SYRSVHPEARGHLSEALTEDTGVGTSVAGSPLPLTTGNESLDITIVRHLQYCTQLVQQIVFSKTPFVAR
 SLLLEKLSRQIQVMEKLAAVSDENIGNISSVVEAIPFHHKLSLLSFWTKCCSPVGVYHSPADRVMKLEA
 SFARTVNKEYPGLADPVFRTLVSQILDRAEPLSSSLSSEVVTVFYYSYFTSHGVSDLESYLSLARQV
 SMVQTLQSLRDEKLLQMSDLAPSNLLAQQEVLRTLALLLTTREDNEVSEAVTLYLAAASKNQHFREKALL
 YYCEALTKTNLQLQKAACLALKILEATESIKMLVTLQSDTTEEIRNVASETLLSLGEDGRLAYEQLDKFP
 RDCVKVGGRRHGTEVATAF

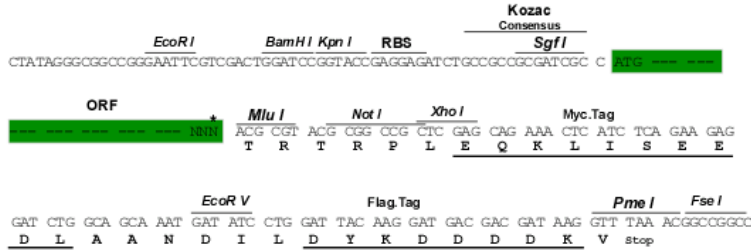
TRTRPLEQKLISEEDLAANDILDYKDDDDKV

Restriction Sites:

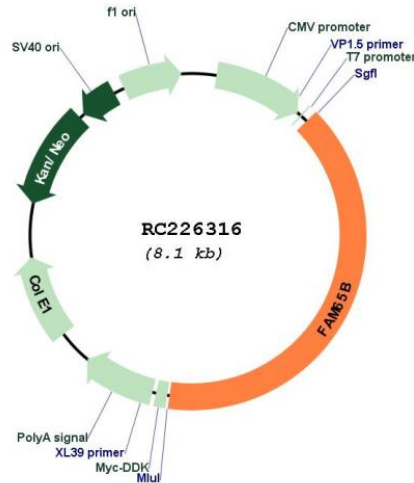
Sgfl-MluI

Cloning Scheme:

Cloning sites used for ORF Shuttling:



* The last codon before the Stop codon of the ORF

Plasmid Map:

ACCN:

NM_014722

ORF Size:

3204 bp

OTI Disclaimer:

The molecular sequence of this clone aligns with the gene accession number as a point of reference only. However, individual transcript sequences of the same gene can differ through naturally occurring variations (e.g. polymorphisms), each with its own valid existence. This clone is substantially in agreement with the reference, but a complete review of all prevailing variants is recommended prior to use. [More info](#)

OTI Annotation:

This clone was engineered to express the complete ORF with an expression tag. Expression varies depending on the nature of the gene.

Components:	The ORF clone is ion-exchange column purified and shipped in a 2D barcoded Matrix tube containing 10ug of transfection-ready, dried plasmid DNA (reconstitute with 100 ul of water).
Reconstitution Method:	<ol style="list-style-type: none">1. Centrifuge at 5,000xg for 5min.2. Carefully open the tube and add 100ul of sterile water to dissolve the DNA.3. Close the tube and incubate for 10 minutes at room temperature.4. Briefly vortex the tube and then do a quick spin (less than 5000xg) to concentrate the liquid at the bottom.5. Store the suspended plasmid at -20°C. The DNA is stable for at least one year from date of shipping when stored at -20°C.
RefSeq:	<u>NM_014722.5</u>
RefSeq ORF:	3207 bp
Locus ID:	9750
UniProt ID:	<u>Q9Y4F9</u>
Cytogenetics:	6p22.3
MW:	118.3 kDa
Gene Summary:	This gene encodes an atypical inhibitor of the small G protein RhoA. Inhibition of RhoA activity by the encoded protein mediates myoblast fusion and polarization of T cells and neutrophils. The encoded protein is a component of hair cell stereocilia that is essential for hearing. A splice site mutation in this gene results in hearing loss in human patients. [provided by RefSeq, Sep 2016]