

Product datasheet for RC226310L1

EVI1 (MECOM) (NM_001105078) Human Tagged Lenti ORF Clone

Product data:

Product Type:	Expression Plasmids
Product Name:	EVI1 (MECOM) (NM_001105078) Human Tagged Lenti ORF Clone
Tag:	Myc-DDK
Symbol:	EVI1
Synonyms:	AML1-EVI-1; EVI1; KMT8E; MDS1; MDS1-EVI1; PRDM3; RUSAT2
Mammalian Cell Selection:	None
Vector:	pLenti-C-Myc-DDK (PS100064)
E. coli Selection:	Chloramphenicol (34 ug/mL)
ORF Nucleotide Sequence:	The ORF insert of this clone is exactly the same as(RC226310).
Restriction Sites:	SgfI-MluI
Cloning Scheme:	

Cloning sites used for ORF Shuttling:



* The last codon before the Stop codon of the ORF.

ACCN:	NM_001105078
ORF Size:	3153 bp



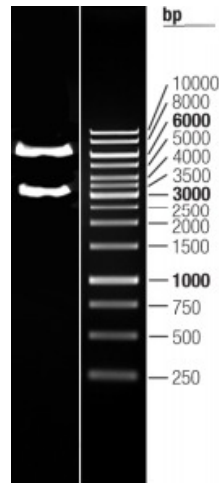
[View online »](#)

OTI Disclaimer:	The molecular sequence of this clone aligns with the gene accession number as a point of reference only. However, individual transcript sequences of the same gene can differ through naturally occurring variations (e.g. polymorphisms), each with its own valid existence. This clone is substantially in agreement with the reference, but a complete review of all prevailing variants is recommended prior to use. More info
OTI Annotation:	This clone was engineered to express the complete ORF with an expression tag. Expression varies depending on the nature of the gene.
Components:	The ORF clone is ion-exchange column purified and shipped in a 2D barcoded Matrix tube containing 10ug of transfection-ready, dried plasmid DNA (reconstitute with 100 ul of water).
Reconstitution Method:	<ol style="list-style-type: none">1. Centrifuge at 5,000xg for 5min.2. Carefully open the tube and add 100ul of sterile water to dissolve the DNA.3. Close the tube and incubate for 10 minutes at room temperature.4. Briefly vortex the tube and then do a quick spin (less than 5000xg) to concentrate the liquid at the bottom.5. Store the suspended plasmid at -20°C. The DNA is stable for at least one year from date of shipping when stored at -20°C.
RefSeq:	NM_001105078.2
RefSeq ORF:	3156 bp
Locus ID:	2122
UniProt ID:	Q13465
Cytogenetics:	3q26.2
Protein Families:	Druggable Genome, Transcription Factors
Protein Pathways:	Chronic myeloid leukemia, MAPK signaling pathway, Pathways in cancer
MW:	118.1 kDa
Gene Summary:	The protein encoded by this gene is a transcriptional regulator and oncoprotein that may be involved in hematopoiesis, apoptosis, development, and cell differentiation and proliferation. The encoded protein can interact with CTBP1, SMAD3, CREBBP, KAT2B, MAPK8, and MAPK9. This gene can undergo translocation with the AML1 gene, resulting in overexpression of this gene and the onset of leukemia. Several transcript variants encoding a few different isoforms have been found for this gene. [provided by RefSeq, Mar 2011]

Product images:



Circular map for RC226310L1



Double digestion of RC226310L1 using SgfI and MluI