

## Product datasheet for RC226302

### SMARCAD1 (NM\_001128429) Human Tagged ORF Clone

#### Product data:

Product Type:	Expression Plasmids
Product Name:	SMARCAD1 (NM_001128429) Human Tagged ORF Clone
Tag:	Myc-DDK
Symbol:	SMARCAD1
Synonyms:	ADERM; BASNS; ETL1; HEL1; HRZ
Mammalian Cell Selection:	Neomycin
Vector:	pCMV6-Entry (PS100001)
E. coli Selection:	Kanamycin (25 ug/mL)
ORF Nucleotide Sequence:	>RC226302 representing NM_001128429 Red=Cloning site Blue=ORF Green=Tags(s)

TTTTGTAATACGACTCACTATAGGGCGGCCGGAATTCGTCGACTGGATCCGGTACCGAGGAGATCTGCC  
GCC**CGATCGCC**

ATGAATCTTTTCAACCTGGACCGTTTTTCGCTTTGAGAAAAGGAATAAGATTGAGGAAGCGCCGAAGCAA  
CCCCTCAACCTTCCCAGCCTGGCCCTTCTTACCAATTTCTCTTAGTGCTGAAGAGGAGAATGCTGAAGG  
GGAAGTTAGCAGGGCAACACTCCTGATTCAGATATACTGAAAAACAGAAGATTCTAGTGTCCAGAA  
ACTCCAGATAATGAAAGAAAAGCAAGTATATCATATTTCAAAAAATCAAAGAGGAATACAGTATATTGATT  
TGTCTTCTGATAGTGAAGATGTCGTTTTCCCAAATGCTCCAATACAGTTCAAGAGAAAACATTCACAA  
AGATACAGTGATTATAGTTTCTGAGCCATCTGAAGATGAAGAGTCCCAAGGCCTTCTACCATGGCACGT  
AGAAATGATGATATTTTCAGAAGTGGAAAGACCTTTCGGAATTGGAAGACCTTAAAGATGCTAACTTCAGA  
CTTTGAAGGAACCTTTTCCACAAAGAAGTGACAATGATTTACTTAAGTTGATTGAATCAACAAGCACTAT  
GGATGGAGCAATTGCTGCTGCCTTGCTGATGTTGGTGATGCAGGTGGTGGGCCAGGAAAAGAAAATTA  
TCTTCTTCTTCAGAGCCATATGAGGAAGATGAATTTAATGATGATCAATCTATAAAAAAGACAAGACTGG  
ATCATGGAGAGGAATCAAATGAGTCTGCAGAATCTAGCAATAATTGGGAAAAGCAGGAAAGTATTGTACT  
GAAATTGCAAAAAGGAATTTCCCAATTTTGATAAACAGGAACTTAGAGAAGTACTCAAGGAACATGAATGG  
ATGTACACAGAAGCTTTAGAATCTCTAAAAGTGTTCAGAGACCAAGATATGCAATATGCATCACAAA  
GTGAGGTTCCAAATGAAAAGAAGTTTCTTCAAGAAGTCAAATACCCTAAAAATGCAACTAAAACAAA  
ACTAAAACAGAAATTTTCAATGAAAGCACAAAATGGCTTTAACAAGAAACGTAAAAAAAATGTTTTAAT  
CAAAAGAGAGTTGTTGAAGACTCTGAATATGATTCAGGTTCTGATGTCGGTAGTTCACTAGATGAGGACT  
ATAGTAGTGGTGAAGAAGTATGGAGGATGGCTATAAAGGTAAAATCTTCACTTCTTCAAGATGCTTC  
AATTGGTGAACCTACTTTGATTCCTCAGTGTCTCAGAAAAAGGCTCAGAAGATAACAGAAGTCCGGCCC  
TTAATAGTTGGGAGGCTCTGTTCAAAAGATGCCAAAATTAATGGCTTATCAGAAGATTTGATATGGC  
ACTGTAACACTGATCCAAGAAAGAGATGTAGTTATAAGGCTTATGAACAAATGTGAAGACATTTCAA  
TAAATTGACCAACAAGTTACCATGCTTACTGAAATGGAGGTGGATGGAACATAGAACAACCTTCCATT



[View online »](#)

CTAAACCAGAGTTTGTCACTCAAGCCCTATCAGAAGGTTGGTTTGAATTGGCTGGCATTGGTACATAAAC  
 ATGGACTTAATGGCATTGGCAGATGAAATGGCCTAGGAAAACTATTCAAGCCATTGCATTTCTGGC  
 ATACCTCTATCAGGAGGTAATAATGGTCTCATTGATCGTTGTTCCAGCTTCAACTATAGATAACTGG  
 TTAAGGGAAGTTAATTTATGGTCCCTACTTTGAAGGTCTCTGTTACTATGGTTCTCAAGAAGAACGTA  
 AACAAATTAGATTTAACATTCATAGTAGATAGAAGATTACAATGTAATTGTGACCACATATAACTGTGC  
 GATCAGCAGTTCTGATGATCGTAGTCTGTTTCGACGGCTGAACTTAATTACGCAATTTTGTAGAGGGC  
 CATATGCTGAAGAATATGGGCTCCATTGCCTACCAGCACCTTATGACAATTAATGCAAAATACCGTTTGC  
 TGCTCACAGGCACACCTGTACAGAACAATCTGTTAGAACTCATGTCGCTGTTGAATTTTGTATGCCACA  
 CATGTTTATGATAGTACACCAGTGAATACGAAGAATGTTTTCTCTAAGACAAAAATCAGCAGATGAGCAA  
 AGCATATATGAAAAGGAGAGAATAGCACATGCAAAACAAATTATAAAGCCATTTATTCTCAGAAGAGTAA  
 AAGAAGAGTTCTCAAGCAGTTACCCCCAAGAAAGATCGAATTGAGTTGTGCAATGTCGGAGAAGCA  
 GGAGCAACTCTATTTGGGTCTTTTCAACAGATTGAAAAATCTATCAATAACTTGGTCACAGAAAAAAC  
 ACAGAAATGTGCAATGTCATGATGCAGTTGAGGAAAAATGGCCAATCATCCTTTTATACATCGCCAATATT  
 ACACAGCTGAAAACTCAAGGAAATGTCTCAGCTTATGCTAAAGGAACCTACACATTGTGAGGCTAACCC  
 TGACCTGATCTTTGAAGATATGGAAGTTATGACAGACTTCGAACTACATGTACTTTGTAACAGTACCGA  
 CACATTAATAACTTTAGTTAGACATGGACTTGATTTTAGATTCTGGAAAATTCGAGTTTTAGGATGCA  
 TCTTGTCTGAATTGAAACAGAAGGGTGATAGAGTTGTGTTATTTAGCCAATTTACCATGATGCTGGATAT  
 CTTAGAGGTTCTATTAACATCATCAGCATAGGTACCTCAGATTAGATGGAAAGACTCAGATTTCTGAA  
 AGGATTCATCTAATTGATGAGTTAATACCGATATGGATATCTTTGTGTTCTGCTATCAACAAAAGCTG  
 GTGGATTAGGAATAAATCTGACTTCAGCAAATGTTGTTATACTTCACGATATTGACTGTAATCCTTATAA  
 TGACAAACAAGCAGAAGATAGATGCCATAGAGTAGGCCAGACTAAAGAAGCACTAGTTATAAACTAATA  
 AGCCAAGGACGATTGAAGAATCCATGCTAAAAATTAACCAACAGAAATTGAAACTAGAACAGGATATGA  
 CTACAGTAGATGAAGGTGATGAAGGGAGTATGCCAGCAGATATAGCCACATTACTAAAAACATCAATGGG  
 CCTG

ACGCGTACGCGGCCGCTCGAGCAGAACTCATCTCAGAAGAGGATCTGGCAGCAATGATATCCTGGATT  
 ACAAGGATGACGACGATAAGGTTTAA

**Protein Sequence:**

>RC226302 representing NM\_001128429

Red=Cloning site Green=Tags(s)

MNLFNLDLDRFRFEKRNKIEEAPATPQPSQPGSPISLSAEENAEGEVSRANTPDSITEKTEDSSVPE  
 TPDNERKASISYFKNQRGIQYIDLSSDSEDVSPNCSNTVQEKTFNKDVTIIVSEPESEDEESQGLPTMAR  
 RNDDISELEDLSELEDLKDACLQTLKELFPQRSDNDLLKLIESTSTMDGIAAALLMFGDAGGGPRKRKL  
 SSSSEPYEDEFNDQSIKKTRLDHGEESNESAESSNNWEKQESIVLKLQKFPNFDKQELREVLKEHEW  
 MYTEALESKVF AEDQDMQYASQSEVPNGKEVSSRSQNYPKNATKTKLKQKFSMKAQNGFNKRRKKNVFN  
 QKRVEDSEYDSGSDVGSLLDEYSSGEEVMDGYKGIHLHFLQDASIGELTLIPQCSQKKAQKITELRP  
 FNSWEALFTKMSKTNGLSEDLIWHCKTLIQERDVVIRLMNKCEDI SNKLTQVMTL TNGGGWNIEQPSI  
 LNQSLSLKPYQKVLNWLALVHKHGLNGILADEMGLGKTIQAI AFLAYLYQEGNNGPHLIVVPASTIDNW  
 LREVNLCPTLKVLCYYGSQEERKQIRFNIHSRYEDYNVIVTTYNCAISSDDRSLFRRLKLNIAIFDEG  
 HMLKNMGSIRYQHLMTINANNRLLLGTGPVQNNLELMSLLNFVMPHMFSSSTSEIRRMFSSKTKSADEQ  
 SIYEKERIAHAKQIIKPFILRRVKEEVLKQLPPKKDRIELCAMSEKQEQLYGLFNRLKKSINNLVTEKN  
 TEMCNVMMQLRKMANHPLLHRQYYTAELKEMSQLMLKEPTHCEANPDLIFEDMEVMTDFELHVLCKQYR  
 HINNFQLDMDLILDSGKFRVLGCILSELKQKGDVVLF SQFTMMLDILEVLLKHHQHRYLRDGTQISE  
 RIHLIDEFNTDMDIFVLLSTKAGGLGINLTSANVVILHDIDCNPYNDKQAE DRCHRVGQTKEALVIKLI  
 SQGTIEESMLKINQQKLEQDMTTVDEGDEGSMPADIATLLKTSMGL

TRTRPLEQKLI SEEDLAANDILDYKDDDDKV

**Restriction Sites:**

SgfI-MluI

**Cloning Scheme:**


**ACCN:** NM\_001128429

**ORF Size:** 3084 bp

**OTI Disclaimer:** The molecular sequence of this clone aligns with the gene accession number as a point of reference only. However, individual transcript sequences of the same gene can differ through naturally occurring variations (e.g. polymorphisms), each with its own valid existence. This clone is substantially in agreement with the reference, but a complete review of all prevailing variants is recommended prior to use. [More info](#)

**OTI Annotation:** This clone was engineered to express the complete ORF with an expression tag. Expression varies depending on the nature of the gene.

**Components:** The ORF clone is ion-exchange column purified and shipped in a 2D barcoded Matrix tube containing 10ug of transfection-ready, dried plasmid DNA (reconstitute with 100 ul of water).

- Reconstitution Method:**
1. Centrifuge at 5,000xg for 5min.
  2. Carefully open the tube and add 100ul of sterile water to dissolve the DNA.
  3. Close the tube and incubate for 10 minutes at room temperature.
  4. Briefly vortex the tube and then do a quick spin (less than 5000xg) to concentrate the liquid at the bottom.
  5. Store the suspended plasmid at -20°C. The DNA is stable for at least one year from date of shipping when stored at -20°C.

**RefSeq:** [NM\\_001128429.3](#)

**RefSeq ORF:** 3087 bp

**Locus ID:** 56916

**UniProt ID:** [Q9H4L7](#)

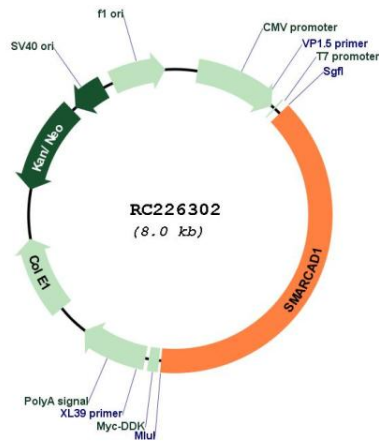
**Cytogenetics:** 4q22.3

**Protein Families:** Druggable Genome, Stem cell - Pluripotency, Transcription Factors

**MW:** 117.4 kDa

**Gene Summary:** This gene encodes a member of the SNF subfamily of helicase proteins. The encoded protein plays a critical role in the restoration of heterochromatin organization and propagation of epigenetic patterns following DNA replication by mediating histone H3/H4 deacetylation. Mutations in this gene are associated with adematoglyphia. Alternatively spliced transcript variants encoding multiple isoforms have been observed for this gene. [provided by RefSeq, Dec 2011]

**Product images:**



Circular map for RC226302