

## Product datasheet for RC226290

### STOX1 (NM\_001130161) Human Tagged ORF Clone

#### Product data:

**Product Type:** Expression Plasmids  
**Product Name:** STOX1 (NM\_001130161) Human Tagged ORF Clone  
**Tag:** Myc-DDK  
**Symbol:** STOX1  
**Synonyms:** C10orf24  
**Mammalian Cell Selection:** Neomycin  
**Vector:** pCMV6-Entry (PS100001)  
**E. coli Selection:** Kanamycin (25 ug/mL)  
**ORF Nucleotide Sequence:** >RC226290 representing NM\_001130161  
Red=Cloning site Blue=ORF Green=Tags(s)

TTTTGTAATACGACTCACTATAGGGCGGCCGGAATTCGTCGACTGGATCCGGTACCGAGGAGATCTGCC  
GCC**CGATCGCC**

ATGGCCCCGCCGTGCAGCTGGCGCCGGGCTCGCTGGCGCTAGTGCTGTGCCGGCTGGAGGCGCAGAAGG  
CGGCGGGGGCCGCGGAGGAGCCTGGTGGCGCGCGGTGTTCCGCGCTTCCGTCGCGCAACGCGCGCTG  
CTTCTGGAACGCGCGGCTGGCGCGCGCCCTCGCGGCTGGCCTTCCAGGGCTGGCTGCGCGGGGGGTG  
CTGCTGGTGCAGCGCCCCCGCCTGCCTGCAGGTGCTGCGCGATGCCTGGCGGCGCCGGCCCTGCGGC  
CGCCGCGCGGCTTCCGCATCAGGGCGGTGGGTGATGTCTTCCAGTGCAAATGAATCCAATAACTCAATC  
TCAGTTTCGTACCTTTGGGTGAAGTTCTTTGCTGTGCTATATCTGATATGAATACAGCTCAGATTGTAGTA  
ACGCAGGAATCACTTTTGAGCGTGTGATGAAACATTACCCAGGCATTGCAATCCATCGGAAGATATTC  
TTTATACCACTCTGGAAACGCTGATTAAGAAAGGAAGATTTATCACACTGGAGAAGGATACTTCATAGT  
TACTCCTCAGACTTACTTCAATACAAATACAACCACCCAGGAAAAAAGAGAATGCTGCCATCAGATGAA  
AGTCGCTGATGCCAGCTTCCATGACATATCTGGTGAGCATGGAGAGCTGTGCAGAGTCAGCCAAAGAGA  
ATGCTGCCCCATATCCCACTGTCAGTCTTCCAGTGTTCGGGACATGCACACTCAGGATGTTACGGA  
AGCACCAGTTGCTGCAGAAGTGACTAGGAAGAGTACAGAGGTCTTGGGAATCCGTATCTTGGGTACAG  
AATGGGCGAGTTTCAGTGTCTGCGGAGCACCACATTTGTGAGAGCACCAAACCTTTACCATACACAAGAG  
ATAAAGAAAAAGCAAGAAGTTTGGTTTTAGTCTTATGGCGCAGCTTATCTAGAAAGGAGAAGCCCAA  
AACAGAACACAGCAGTTTCTCTGCTCAGTTCACCTGAAGAATGGCCCGTCCGAGATGAAGATGACTTG  
GACAATATCCCTCGAGATGTTGAACATGAGATAATCAAACGAATTAACCCATTTTGACTGTTGACAATT  
TAATCAAACACTGTCTAATGCAAAAAACGAAGAACAGAAAAATATAATAGCCAGGGCACTCCAC  
TGACATGCTGACAATCGGCATAAGTATCCTTCAAAGAGGGGTTAAGAAAAGGAGGGTCTGTCTGCA  
AAACCTCAAGGGCAGGGCATTCTGAAGGGATAGACACAAGCCAGGAATCAGGGAAGTGAGTTTCAGC  
CAGGAAGCATTAGACTGGAGAAACACCCCAAGTCCCTGCTACACAGCCCATCCCAGAATTAAGGCC  
AAATGAAATGGTAGGTCAGAAACCACTTGGTGAGATTACAACAGTCTAGGTTCCCATTTGATTTACAA



AAGCGAATCAGTAATCCTTTCCAGGGTTTGTCTACCCGAGGAAGCACAATATCCAAAGGGCACAAAATTC  
 AGAAGACGAGTGATCTGAAACCCAGCCAGACTGGACCAAAGGAAAAGCCTTTCCAAAAGCCTAGGTCCTT  
 GGATTCCTCAAGAATCTTTGATGGTAAAGCCAAAGAGCCATATGCTGAACAACCTAATGATAAAATGGAA  
 GCAGAATCCATTTACATAAATGACCCTACTGTCAAACCCATCAATGATGACTTCAGAGGTCACCTCTTCA  
 GTCACCCTCAACAGAGCATGTTGCAAAAATGATGGTAAATGCTGTCCCTTTATGGAAAGCATGTTGAGATA  
 TGAAGTGTATGGTGGAGAAAATGAGGTAATTCCTGAAGTCTTGAGGAAAAGTCATTCCCCTTTGACAAA  
 TTAGGGGAGACCAAACAGACTCCGCATAGTCTGCCATCAGGAGGTGCCTCCTTTTCAGACCGAACCCCT  
 CTGCTTGTAGATTAGTGATAACACAATACACCAGTTTCAAATCTTGGCCTTTTGGATTACCCAGTTGG  
 CGTGAACCCTTTAAGACAAGCTGCAAGACAAGACAAGACTCAGAAGAATTATTGAGAAAAGGATTTGTC  
 CAGGATGCAGAGACTACAAGCCTAGAAAATGAACAGCTTTCTAACGATGACCAGGCCTTGTATCAGAATG  
 AAGTGGAAAGATGATGATGGTGCCTGTAGTTCATTATATCTAGAGGAGGATGACATTTCTGAGAATGACGA  
 CTTACGTCAAATGCTGCCTGGCCACAGTCAGTATTCCTTCACAGGTGGAAGCCAGGGAAATCATTAGGA  
 AAACAAAAGTGATTGAGAGATCTGTACCAGTACAACAGCACAATGGAGAGGGTTGAGTCTCAGGTGC  
 TTTAAAAGAAATGAATGCTACAAACCCACTGGGCTGCATGCTACCCAGGTGAAAGCCAAGAACCTAACCT  
 CTCTGCTGAAAGTTGTGGCTAAATTCAGGGGCCAGTTTGGTTTAACTACGAAGAAGAACCCAGTGTT  
 GCTAAATGTGTACAGGCCTCAGCACCTGCTGATGAAAGAATCTTTGATTACTATAGCGCAAGAAAAGCCA  
 GTTTTGAAGCTGAAGTCATACAAGACACTATTGGTGACACAGGAAAGAAGCCAGCTAGCTGGAGTCAGAG  
 TCCTCAGAATCAGGAAATGAGAAAACATTTCCACAAAAGTTCCAACTTTTCAACACTTCACATATGCCA  
 GTGTTGGCTCAGGATGTCCAATATGAACACAGTCACTTGGAAAGGACAGAAAATCACAGCATGGCAGGAG  
 ATAGTGGAAATAGATTCTCCACGGACACAGAGTCTGGGATCTAATAATTAGTCTATTTGGATGGACTAAA  
 AAGAAGACAGAATTTTCTGCAAAATGTCGAAGGCACAAAGAGCAGTCAACCACTCACATCTAATTCCTTA  
 CTACCGCTAACTCCAGTCATAAACGTT

ACGCGTACGCGGCCGCTCGAGCAGAACTCATCTCAGAAGAGGATCTGGCAGCAAATGATATCCTGGATT  
 ACAAGGATGACGACGAT AAGGTTTAA

**Protein Sequence:**

>RC226290 representing NM\_001130161  
 Red=Cloning site Green=Tags(s)

MARPVQLAPGSLALVLCRLEAQKAAGAAEPEGGRAVFRFRANARCFWNARLARAASRLAFQGWLRRGV  
 LLVRAPPAQLQLRDAWRRRALRPPRGFRIRAVGDVFPVQMNPIITQSQFVPLGEVLCCLAI SDMNTAQIVV  
 TQESLLERLMKHYPGIAIPSEDILYTTLGTLIKERKIYHTGEGYFIVTPQTYFITNTTTQENKRMLPSDE  
 SRLMPASMTYLVSMECAESAQENAAPI SHCQSCQCFRDMHTQDVQEAPVAAEVTRKSHRGLGESVSWVQ  
 NGAVSVSAEHHICESTKPLPYTRDKEKGGKFGFSLWRSLSRKEKPKTEHSSFSAQFPPEEWPVRDEDDL  
 DNIPRDVEHEI IKRINPILTVDNLIKHTVLMQKYEEQKKYNSQGTSDMLTIGHKYSKEGVKKRQGLSA  
 KPQGGHSRRDRHKARNQSEFQPGSIRLEKHPKLPATQPIPRIKSPNEMVQKPLGEITTVLGSHLIYK  
 KRISNPFQGLSHRGSTISKGHKIQKTSDLKPSQTGPKEKPFQKPRSLDSSRIFDGKAKEPYAEQPNDKME  
 AESIYINDPTVKPINDDFRGLFSHPQQSMLQNDGKCCPFMESMLRYEVYGGENEVIPEVLRKSHSHFDK  
 LGETKQTPHSLPSRGASFSDRTPSACRLVDNTIHQFQNLGLLDYPVGVNPLRQAARQDKDSEELLRKG  
 QDAETTSLENEQLSNDDQALYQNEVEDDDGACSSLYLEEDDISENDDLRQMLPGHSQYSFTGGSSQGNHLG  
 KQKVIERSL TEYNSTMERVESQVLKRNECYKPTGLHATPGESQEPNL SAESCGLNSGAQFGFNYYYYE  
 AKCVQASAPADERIFDYYSARKASFEAEVIQDTIGDTGKKPASWSQPQNMQRKHFQKFLFNTSHMP  
 VLAQDVQYEHSHLEGTENHSMAGDSGIDSPRTQSLGSNNSVILDGLKRRQNFLQNVGKSSQPLTSNSL  
 LPLTPVINV

TRTRPLEQKLI SEEDLAANDILDYKDDDDKV

**Chromatograms:**

[https://cdn.origene.com/chromatograms/mk8017\\_h08.zip](https://cdn.origene.com/chromatograms/mk8017_h08.zip)

**Restriction Sites:**

Sgfl-MluI

**Cloning Scheme:**


**ACCN:** NM\_001130161

**ORF Size:** 2967 bp

**OTI Disclaimer:** The molecular sequence of this clone aligns with the gene accession number as a point of reference only. However, individual transcript sequences of the same gene can differ through naturally occurring variations (e.g. polymorphisms), each with its own valid existence. This clone is substantially in agreement with the reference, but a complete review of all prevailing variants is recommended prior to use. [More info](#)

**OTI Annotation:** This clone was engineered to express the complete ORF with an expression tag. Expression varies depending on the nature of the gene.

**Components:** The ORF clone is ion-exchange column purified and shipped in a 2D barcoded Matrix tube containing 10ug of transfection-ready, dried plasmid DNA (reconstitute with 100 ul of water).

- Reconstitution Method:**
1. Centrifuge at 5,000xg for 5min.
  2. Carefully open the tube and add 100ul of sterile water to dissolve the DNA.
  3. Close the tube and incubate for 10 minutes at room temperature.
  4. Briefly vortex the tube and then do a quick spin (less than 5000xg) to concentrate the liquid at the bottom.
  5. Store the suspended plasmid at -20°C. The DNA is stable for at least one year from date of shipping when stored at -20°C.

**RefSeq:** [NM\\_001130161.3](#)

**RefSeq Size:** 3306 bp

**RefSeq ORF:** 2970 bp

Locus ID: 219736

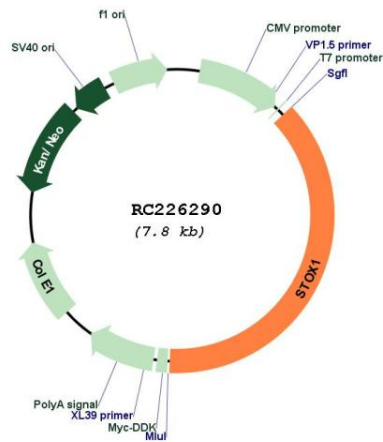
UniProt ID: [Q6ZVD7](#)

Cytogenetics: 10q22.1

MW: 111 kDa

**Gene Summary:** The protein encoded by this gene may function as a DNA binding protein. Mutations in this gene are associated with pre-eclampsia/eclampsia 4 (PEE4). Alternatively spliced transcript variants encoding different isoforms have been found for this gene. [provided by RefSeq, Sep 2009]

**Product images:**



Circular map for RC226290