

Product datasheet for RC226288

UBAP2L (NM_001127320) Human Tagged ORF Clone

Product data:

Product Type:	Expression Plasmids
Product Name:	UBAP2L (NM_001127320) Human Tagged ORF Clone
Tag:	Myc-DDK
Symbol:	UBAP2L
Synonyms:	NICE-4; NICE4
Mammalian Cell Selection:	Neomycin
Vector:	pCMV6-Entry (PS100001)
E. coli Selection:	Kanamycin (25 ug/mL)
ORF Nucleotide Sequence:	>RC226288 representing NM_001127320 Red=Cloning site Blue=ORF Green=Tags(s)

TTTTGTAATACGACTCACTATAGGGCGGCCGGAATTCGTCGACTGGATCCGGTACCGAGGAGATCTGCC
GCC**CGATCGCC**

ATGATGACATCGGTGGGCACTAACCGAGCCCGGGAACTGGGAACAACCTCAAACCAAACCAGACAC
AGCACAAGCAGCGGCCACAGGCCACTGCAGAACAATTAGACTTGCACAGATGATTTGGACCATAATGA
TGCTGACTTTGAGGAGAAGGTGAAACAATTGATTGATATTACAGGCAAGAACCAGGATGAATGTGTGATT
GCTTTGCATGACTGCAATGGAGATGTCAACAGAGCTATCAATGTTCTTCTGGAAGGAAACCAGACACGC
ATTCCTGGGAGATGGTCGGGAAGAAGAAGGGAGTCTCAGGCCAGAAGGATGGTGGCCAGACGGAATCCAA
TGAGGAAGGCAAAGAAAATCGAGACCGGGACAGAGACTATAGTCGGCGACGTGGTGGCCACCAAGACGG
GGGAGAGGTGCCAGCCGTGGACGAGAGTTTCGAGGTGAGGAAAATGGATTGGATGGCACCAAGAGTGGAG
GGCCTTCTGGAAGAGGAACAGAAAGAGGCGAGAAGGGGCCGTGGCCGAGGCAGAGGTGGCTCTGGTAGGCG
AGGAGGAAGGTTTTCTGCTCAAGGAATGGGAACCTTTAACCCAGCTGATTATGCAGAGCCAGCCAATACT
GATGATAACTATGGCAATAGCAGCGGCAATACGTGGAACAACACTGGCCACTTTGAACCAGATGATGGGA
CGAGTGCATGGAGGACTGCAACAGAGGAGTGGGGGACTGAAGATTGGAATGAAGATCTTCTGAGACCAA
GATCTTCACTGCCTCTAATGTGTCTTCAGTGCCTCTGCCTGCGGAGAATGTGACAATCACTGCTGGTCAG
AGAATTGACCTTGCTGTTCTGCTGGGGAAGACACCATCTACAATGGAGAATGATTCACTAATCTGGATC
CGTCTCAGGCTCCTTCTCTGGCCAGCCTCTGGTGTTCAGTAATTCGAAGCAGACTGCCATATCACAGCC
TGCTTCAGGGAACACATTTTCTCATCACAGTATGGTGAGCATGTTAGGGAAGGATTTGGTGATGTCGGT
GAAGCTAAAGGCGGCAGTACTACAGGCTCCAGTTCCTGGAGCAATTCAGACTGCCAAGCCCTGGCTC
AGTTGGCAGCTCAGCATTCTCAGTCTGGAAGCACCACCCTCCTCTGGGACATGGGCTCGACGACACA
ATCCCCATCACTGGTGCAGTATGATTTGAAGAACCAAGTATTGAGCAGTGCACAGCCCTTTACAAGG
CGCCAGGCTTTTACCCATCTTCAACCATGATGGAGGTGTTCTTCAGGAGAAGTCACTGCAGTGGCTA
CCTCCACAGCTGCACCTCCACCTCGTCTTCTCCTCTGCCAAGCAATCCACATCGGCTCCACAGATGTC
GCCTGGATCTTCAGACAACCACTCTAGCCCTCAGCCGGCTCAGCAGAACTGAAACAGCAGAAGAAA



[View online »](#)

AAAGCCTCCTTGACTTCTAAGATTCTGCTCTGGCTGTGGAGATGCCTGGCTCAGCAGATATCTCAGGGC
TAAACCTGCAGTTTGGGGCATTGCAGTTTGGGTGAGAGCCTGTCCTTTCTGATTATGAGTCCACCCAC
CACGAGCGCCTCTTCAAGCCAGGCTCCAAGTAGCCTGTATACCAGCACGGCCAGTGAATCATCTCTACA
ATTTTCATTAACCAGAGTCAGGAGTCTGGTTATCAGAGCGGCCAATTTCAGTCGACAACCTATACCTCCC
AAAATAATGCTCAGGGCCCTCTTATGAACAGAGATCCACACAGACTCGGCGGTACCCAGCTCCATCTC
TTCATCACCCAAAAGGACCTGACTCAGGCAAAGAATGGCTTCAGTTCTGTGCAGGCCACGCAGTTACAG
ACCACCAATCTGTTGAAGGTGCTACAGGCTCTGCAGTGAATCTGATTACCTTCCACTTCTAGCATCC
CCCCTCTCAATGAAACGGTATCTGCAGTTCCTTACTGACGACAACCAATCAGCATTTCATCCTCCTGGG
TGGCTTGAGCCACAGTGAGGAGATTCCAAATACTACCACCACACAACACAGCAGCAGTTATCTACGCAG
CAGAATACCCTTTCATCATCAACATCTTCTGGGCGCACTTCGACATCCACTCTTTTGCACACAAGTGTGG
AGAGTGAGGCGAATCTCCATTCTTCTCCAGCACTTTTTCCACCACATCCAGCACAGTCTCTGCACCTCC
CCCAGTGGTCAGTGTCTCCTCCAGTCTCAATAGTGGCAGTAGCCTGGGCCTCAGCCTAGGCAGCAACTCC
ACTGTCACAGCCTCGACTCGAAGCTCAGTTGCTACGACTTCAGGAAAAGCTCCTCCCAACCTCCTCCTG
GGGTCCCCTGTTGCTAATCCGTATATTATGGCTCCAGGGCTGTTACATGCCTACCCGCCACAAGT
ATATGGTTATGATGACTGCAGATGCTTCAGACAAGATTTCCATTGGATTACTACAGCATCCATTTCCTC
ACACCCACTACTCCGCTGACTGGGAGGGATGGTAGCCTGGCCAGCAACCTTATTCTGGTGACCTCACAA
AGTTTCGGCCGTGGGGATGCCTCCTCCCCAGCCCCGCCACAACCTTGGCCCAACCCCAACAGAACCAGAC
GCAGACTACCATACCACGCAGCAGACATTCTGAACCCGGCGCTGCCTCCTGGCTACAGTTACACCAGC
CTGCCATACTATACAGGGGTCCCAGGCCTCCCCAGCACCTTCCAGTATGGGCCTGCTGTGTTCCCTGTGG
CTCCTACCTCTTCAAGCAGCATGGTGTGAATGTCAGTGTGAATGCATCGGCCACCCCTTCCAACAGCC
GAGTGGATATGGGTCTCATGGATACAACACTGGAAGAAAATATCCACCCCTTACAAGCATTTCTGGACG
GCTGAGAGC

ACGCGTACGCGCGCCTCGAGCAGAACTCATCTCAGAAGAGGATCTGGCAGCAAATGATATCCTGGATT
ACAAGGATGACGACGATAAGGTTTAA

Protein Sequence:

>RC226288 representing NM_001127320
Red=Cloning site Green=Tags(s)

MMTSVGTNRARGNWEQPQNQNQTQHKQRPQATAEQIRLAQMI SDHNDADFEKVKQLIDITGKNQDECVI
ALHDCNGDYNRAINVLLLEGNPDTHSWEMVGGKKGVSGQKDGQTESNEEGKENRDRDRDYSRRRGPPRR
GRGASRGREFRGQENGLDGTKSGPSGRGTERGRRGRGRGRGSGRRGRRFSAQGMGTFNPADYAEPAANT
DDNYGNSSGNTWNNTGHFEPDDGTSAWRATEEWGTEDWNEDLSETKIFTASNVSSVPLPAENVITAGQ
RIDLAVLLGKTPSTMENDSSNLDP SQAPSLAQPLVFSNSKQTAISQPASGNTFSHHSMVSM LGKFGDVG
EAKGGSTTGSQFLEQFKTAQALAAQHSQSGSTTTSSWDMGSTTQSPSLVQYDLKNP SDSAVHSPFTK
RQAFTPSSMMEVFLQEKSPAVATSTAAPPPSSPLPSKSTSAPQMSPGSSDNQSSSPQPAQKQKQKK
KASLTSKIPALAVEMPGSADISGLNLQFGALQFGSEPVLSDYESTPTTSASSSQAPSSLYTSTASESSST
ISSNQSQESGYQSGPIQSTTYTSQNNAAQGLYEQRSTQTRRYPSSISSSPQKDLTQAKNGFSSVQATQLQ
TTQSVEGATGSAVKSDSPSTSSIPPLNETVSAASLLTTTNOHSSSLGGLSHSEEIPNTTTTQHSSTLSTQ
QNTLSSSTSSGRTSTSTLLHTSVESEANLHSSSSTFSTTSSTVSAAPPVVSVSSLSNSGSSLGLSLGNS
TVTASTRSSVATTSGKAPPNLP GPVPLLPNPYIMAPGLLHAYPPQVYGYDDLQMLQTRFPLDYYSIPFP
TPTTPLTGRDGLASNPYSGDLTKFGRGDASSPAPATTLAQPPQNQTQTHHTTQQTFLNPALPPGYSYTS
LPYYTGVPGLPSTFYGPVAVFPVAPTSSKQHG VNVSVNASATPFQPSGYGSHGYNTGRKYPPPYKHFWT
AES

TRTRPLEQKLI SEEDLAANDILDYKDDDDKV

Restriction Sites:

Sgfl-Mlul

Cloning Scheme:


ACCN: NM_001127320

ORF Size: 2949 bp

OTI Disclaimer: The molecular sequence of this clone aligns with the gene accession number as a point of reference only. However, individual transcript sequences of the same gene can differ through naturally occurring variations (e.g. polymorphisms), each with its own valid existence. This clone is substantially in agreement with the reference, but a complete review of all prevailing variants is recommended prior to use. [More info](#)

OTI Annotation: This clone was engineered to express the complete ORF with an expression tag. Expression varies depending on the nature of the gene.

Components: The ORF clone is ion-exchange column purified and shipped in a 2D barcoded Matrix tube containing 10ug of transfection-ready, dried plasmid DNA (reconstitute with 100 ul of water).

Reconstitution Method:

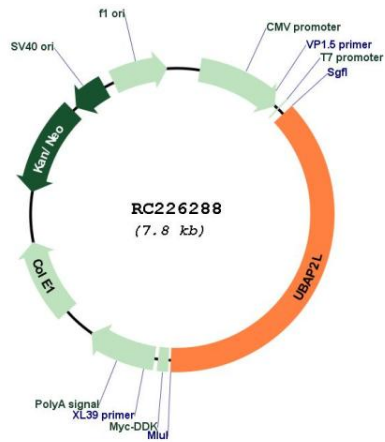
1. Centrifuge at 5,000xg for 5min.
2. Carefully open the tube and add 100ul of sterile water to dissolve the DNA.
3. Close the tube and incubate for 10 minutes at room temperature.
4. Briefly vortex the tube and then do a quick spin (less than 5000xg) to concentrate the liquid at the bottom.
5. Store the suspended plasmid at -20°C. The DNA is stable for at least one year from date of shipping when stored at -20°C.

RefSeq: [NM_001127320.2](#)

RefSeq ORF: 2952 bp

Locus ID: 9898
UniProt ID: [Q14157](#)
Cytogenetics: 1q21.3
Protein Families: Druggable Genome
MW: 103.7 kDa
Gene Summary: Plays an important role in the activity of long-term repopulating hematopoietic stem cells (LT-HSCs).[UniProtKB/Swiss-Prot Function]

Product images:



Circular map for RC226288