

## Product datasheet for **RC226286**

### **NLRP3 (NM\_001127461) Human Tagged ORF Clone**

#### **Product data:**

Product Type:	Expression Plasmids
Product Name:	NLRP3 (NM_001127461) Human Tagged ORF Clone
Tag:	Myc-DDK
Symbol:	NLRP3
Synonyms:	AGTAVPRL; AII; AVP; C1orf7; CIAS1; CLR1.1; DFNA34; FCAS; FCAS1; FCU; KEFH; MWS; NALP3; PYPAF1
Mammalian Cell Selection:	Neomycin
Vector:	pCMV6-Entry (PS100001)
E. coli Selection:	Kanamycin (25 ug/mL)



[View online »](#)

**ORF Nucleotide Sequence:**

>RC226286 representing NM\_001127461  
 Red=Cloning site Blue=ORF Green=Tags(s)

TTTTGTAATACGACTCACTATAGGGCGGCCGGAATTCGTCGACTGGATCCGGTACCGAGGAGATCTGCC  
 GCC**CGCATCGCC**

ATGAAGATGGCAAGCACCCGCTGCAAGCTGGCCAGGTACCTGGAGACCTGGAGGATGTGGACTTGAAGA  
 AATTTAAGATGCACTTAGAGGACTATCCTCCCCAGAAGGGCTGCATCCCCCTCCCGAGGGGTCAGACAGA  
 GAAGGCAGACCATGTGGATCTAGCCACGCTAATGATCGACTTCAATGGGAGGAGAAGGCGTGGGCCATG  
 GCCGTGTGGATCTTCGCTGCGATCAACAGGAGAGACCTTTATGAGAAAGCAAAAAGAGATGAGCCGAAGT  
 GGGGTTACAGATAATGCACGTGTTTGAATCCCCTGTGATATGCCAGGAAGACAGCATTGAAGAGGAGTG  
 GATGGGTTTACTGGAGTACCTTTGAGAATCTCTATTTGTAATAAAGAAAGATTACCGTAAGAAGTAC  
 AGAAAGTACGTGAGAAGCAGATTCCAGTGCATTGAAGACAGGAATGCCCGTCTGGGTGAGAGTGTGAGCC  
 TCAACAAACGCTACACACGACTGCGTCTCATCAAGGAGCACCGGAGCCAGCAGGAGAGGGAGCAGGAGCT  
 TCTGGCCATCGGCAAGACCAAGACGTGTGAGAGCCCCGTGAGTCCCATTAAGATGGAGTTGCTGTTTAC  
 CCCGATGATGAGCATTCTGAGCCTGTGCACACCGTGGTGTCCAGGGGGCGGCAGGGATTGGGAAAAACA  
 TCTGGCCAGGAAGATGATGTTGGACTGGGCGTCGGGGACACTCTACCAAGACAGGTTTACTATCTGTT  
 CTATATCCACTGTGAGAGGTGAGCCTTGTGACACAGAGGAGCCTGGGGACCTGATCATGAGCTGCTGC  
 CCCGACCAAAACCCACCCATCCACAAGATCGTGAGAAAACCTCCAGAATCCTCTTCCATGGACGGCT  
 TCGATGAGCTGCAAGGTGCCTTTGACGAGCACATAGGACCGCTCTGCACTGACTGGCAGAAGGCCGAGCG  
 GGGAGACATTCTCTGAGCAGCCTCATCAGAAAGAAGCTGCTTCCCGAGGCCTCTCTGCTCATCACCAG  
 AGACCTGTGGCCCTGGAGAACTGCAGCAGCTTGTGACCATCCTCGGCATGTGGAGATCCTGGGTTTCT  
 CCGAGGCCAAAAGGAAAGAGTACTTCTTCAAGTACTTCTGATGAGGCCCAAGCCAGGGCAGGCTTCAG  
 TCTGATTCAGGAGAACGAGGTCTCTTCCACATGTGCTTCCATCCCCCTGGTCTGCTGGATCGTGTGCACT  
 GGACTGAAACAGCAGATGGAGAGTGGCAAGAGCCTTGCCAGACATCCAAGACCACCACCGCGGTGTACG  
 TCTTCTTCTTCCAGTTTGTGTCAGCCCGGGGAGGGAGCCAGGAGCACGGCCTCTGCGCCACCTCTG  
 GGGGCTGCTCTTTGGCTGCAGATGGAATCTGGAACCAGAAAATCCTGTTTGGAGAGTCCGACCTCAGG  
 AATCATGGACTGCAGAAGGCGGATGTGTCTGCTTCTGAGGATGAACCTGTTCCAAAAGGAAGTGGACT  
 GCGAGAAGTTCTACAGTTCATCCACATGACTTCCAGGAGTCTTTGCCCCATGTACTACCTGCTGGA  
 AGAGAAAAGGAAGGAAGGACGAACGTTCCAGGGAGTCGTTTGAAGCTTCCAGCCGAGAGCTGACAGTC  
 CTTCTGAAAACATATGGCAAATTCGAAAAGGGTATTTGATTTTTGTTGTACGTTTCTCTTTGGCCTGG  
 TAAACCAGGAGAGGACCTCCTACTTGGAGAAGAAATTAAGTTGCAAGATCTCTCAGCAAATCAGGCTGGA  
 GCTGCTGAAATGGATTGAAGTGAAGCCAAAGCTAAAAAGCTGCAGATCCAGCCAGCCAGCTGGAATTG  
 TTCTACTGTTTGTACGAGATGCAGGAGGAGGACTTCGTGCAAAGGGCCATGGACTATTTCCCAAGATTG  
 AGATCAATCTCTCCACGAAATGGACCACATGGTTTCTCCTTTTGCATTGAGAACTGTCATCGGGTGG  
 GTCACTGTCCCTGGGTTTCTCCATAACATGCCAAGGAGGAAGAGGAGGAGGAAAAGGAAGGCCGACAC  
 CTTGATATGGTGCAGTGTGCTCCCAAGCTCCTCTCATGCTGCCTGTTCTCATGGATTGGTGAACAGCC  
 ACCTCACTTCCAGTTTTTGGCGGGCCTTTTTAGTTCTGAGCACCCAGCCAGAGTCTAACTGAATTGGA  
 CCTCAGTGACAATTCTCTGGGGACCCAGGGATGAGAGTGTGTGTAACCGCTCCAGCATCCTGGCTGT  
 AACATTCCGAGATTGTGTTGGGGCGCTGTGGCCTCTCGCATGAGTGTGCTTCCGACATCTCCTTGGTCC  
 TCAGCAGCAACCAGAAGCTGGTGGAGCTGGACCTGAGTGACAACGCCCTCGGTGACTTCCGAATCAGACT  
 TCTGTGTGGGACTGAAGCACCTGTTGTGCAATCTGAAGAAGCTCTGGTTGGTGAATTCTGGCCTTACG  
 TCAGTCTGTTGTTGAGCTTTGCTCCTCGGTACTCAGCACTAATCAGAATCTCACGCACCTTACCTGCGAG  
 GCAACACTCTCGGAGACAAGGGGATCAAACACTCTGTGAGGGACTTTGCACCCCGACTGCAAGCTTCA  
 GGTGTTGGAATTAGACAACCTGCAACCTCACGTCACTGCTGCTGGGATCTTCCACACTCTGACCTCC  
 AGCCAGAGCCTGCGAAAGCTGAGCCTGGCAACAATGACCTGGGCGACCTGGGGTTCATGATGTTCTGTG  
 AAGTGCTGAAACAGCAGAGCTGCCTCCTGCAGAACCTGGGGTGTCTGAAATGTATTTCAATTATGAGAC  
 AAAAAGTGCCTTAGAAACACTTCAAGAAGAAAAGCCTGAGCTGACCGTCTCTTTGAGCCTTCTTGG

**ACGCGT**ACGCGGCCGCTCGAGCAGAACTCATCTCAGAAGAGGATCTGGCAGCAAATGATATCCTGGATT  
 ACAAGGATGACGACGATAAGGTTTAA

**Protein Sequence:** >RC226286 representing NM\_001127461  
 Red=Cloning site Green=Tags(s)

MKMASTRCKLARYLEDLEDVDLKKFKMHLEDYPPQKGC IPLPRGQTEKADHVDLATLMIDFNGEKAWAM  
 AVWIFAANRRDLYEKAKRDEPKWGS DNARVSNPTVICQEDSIEEEWMLLEYLSRISICKMKKDYRKKY  
 RKYVRSRFQCIEDRNARLGESVSLNKRYTRLRLIKEHRSQQEREQELLAIGKTKTCESPVSPKIMELLFD  
 PDDEHSEPVHTVVVFQGAAGIGKTI LARKMMLDWASGTL YQDRFDYLFYIHCREVSLVTQ RSLGDLIMSSC  
 PDPNPP IHKIVRKP SRILFLMDGFDELQGA FDEHIGPLCTDWQKAERGDILLSSLIRKKLLPEASLLITT  
 RPVALEKLQHLLDHPRHVEILGFSEAKRKEYFFKYFSDEAQAARAAFSLIQENEVLFTMCFIPLVCWIVCT  
 GLKQQMESGKSLAQTSKTTTAVYVFFLSLLQPRGGSQEHLCAHLWGLCSLAADGIWNQKILFEESDLR  
 NHGLQKADVSAFLRMNLFQKEVDCEKFYSFIHMTFQEFAAMYLL EEEKEGR TNVPGSRLKLP SRDVTV  
 LLENYGFKEKGYLIFVVRFLFGLVNQERTSYLEKKLSCKISQQIRLELLKWI EVKAKAKKLQIQPSQLEL  
 FYCLYEMQEEDFVQRAMDYFPKIEINLSTRMDHMVSSFCIENCHRVESLSLGF LHNMPKEEEEEKEGRH  
 LDMVQCVL PSSSHAACSHGLVNSHLTSSFCRGLFSVLSTSQSL TELDLSDNSLGD PGM RVL CETLQHPGC  
 NIRRLWLGRGCL SHECCFDISLVLSSNQKLV ELDLSDNALGDFGIRLLCVGLKHLLCNLKKLWLVNSGLT  
 SVCCSALSSVLSTNQNLTHLYLRGNTLGDKGIKLLCEGLLHPDCKLQVLELDN CNLTS HCCWDLSTLLTS  
 SQSLRKL SLGNNDL GDLGVMMFCEVLKQQSCLLQNLGLSEMYFN YETKSALET LQEEKPELTVVFEPSW

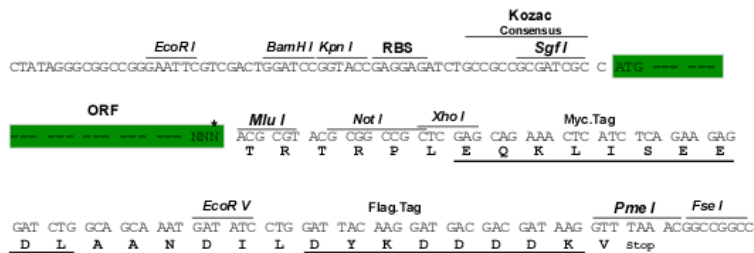
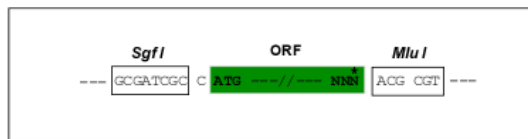
TRTRPLEQKLISEEDLAANDILDYKDDDDKV

**Chromatograms:** [https://cdn.origene.com/chromatograms/mk8031\\_c09.zip](https://cdn.origene.com/chromatograms/mk8031_c09.zip)

**Restriction Sites:** SgfI-MluI

**Cloning Scheme:**

Cloning sites used for ORF Shuttling:



\* The last codon before the Stop codon of the ORF

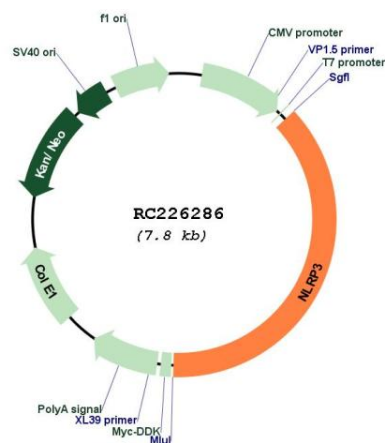
**ACCN:** NM\_001127461

**ORF Size:** 2937 bp

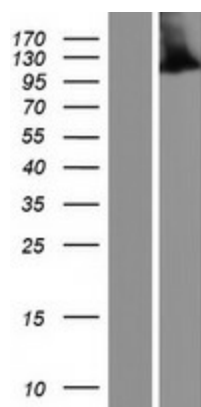
<b>OTI Disclaimer:</b>	<p>Due to the inherent nature of this plasmid, standard methods to replicate additional amounts of DNA in E. coli are highly likely to result in mutations and/or rearrangements. Therefore, OriGene does not guarantee the capability to replicate this plasmid DNA. Additional amounts of DNA can be purchased from OriGene with batch-specific, full-sequence verification at a reduced cost. Please contact our customer care team at <a href="mailto:custsupport@origene.com">custsupport@origene.com</a> or by calling 301.340.3188 option 3 for pricing and delivery.</p> <p>The molecular sequence of this clone aligns with the gene accession number as a point of reference only. However, individual transcript sequences of the same gene can differ through naturally occurring variations (e.g. polymorphisms), each with its own valid existence. This clone is substantially in agreement with the reference, but a complete review of all prevailing variants is recommended prior to use. <a href="#">More info</a></p>
<b>OTI Annotation:</b>	This clone was engineered to express the complete ORF with an expression tag. Expression varies depending on the nature of the gene.
<b>Components:</b>	The ORF clone is ion-exchange column purified and shipped in a 2D barcoded Matrix tube containing 10ug of transfection-ready, dried plasmid DNA (reconstitute with 100 ul of water).
<b>Reconstitution Method:</b>	<ol style="list-style-type: none"> <li>1. Centrifuge at 5,000xg for 5min.</li> <li>2. Carefully open the tube and add 100ul of sterile water to dissolve the DNA.</li> <li>3. Close the tube and incubate for 10 minutes at room temperature.</li> <li>4. Briefly vortex the tube and then do a quick spin (less than 5000xg) to concentrate the liquid at the bottom.</li> <li>5. Store the suspended plasmid at -20°C. The DNA is stable for at least one year from date of shipping when stored at -20°C.</li> </ol>
<b>RefSeq:</b>	<u><a href="#">NM_001127461.1</a>, <a href="#">NP_001120933.1</a></u>
<b>RefSeq ORF:</b>	2934 bp
<b>Locus ID:</b>	114548
<b>UniProt ID:</b>	<u><a href="#">Q96P20</a></u>
<b>Cytogenetics:</b>	1q44
<b>Protein Families:</b>	Druggable Genome
<b>Protein Pathways:</b>	NOD-like receptor signaling pathway
<b>MW:</b>	112.1 kDa

**Gene Summary:**

This gene encodes a pyrin-like protein containing a pyrin domain, a nucleotide-binding site (NBS) domain, and a leucine-rich repeat (LRR) motif. This protein interacts with the apoptosis-associated speck-like protein PYCARD/ASC, which contains a caspase recruitment domain, and is a member of the NLRP3 inflammasome complex. This complex functions as an upstream activator of NF-kappaB signaling, and it plays a role in the regulation of inflammation, the immune response, and apoptosis. The SARS-CoV 3a protein, a transmembrane pore-forming viroporin, has been shown to activate the NLRP3 inflammasome via the formation of ion channels in macrophages. Mutations in this gene are associated with familial cold autoinflammatory syndrome (FCAS), Muckle-Wells syndrome (MWS), chronic infantile neurological cutaneous and articular (CINCA) syndrome, neonatal-onset multisystem inflammatory disease (NOMID), keratoendotheliitis fugax hereditaria, and deafness, autosomal dominant 34, with or without inflammation. Multiple alternatively spliced transcript variants encoding distinct isoforms have been identified for this gene. Alternative 5' UTR structures are suggested by available data; however, insufficient evidence is available to determine if all of the represented 5' UTR splice patterns are biologically valid. [provided by RefSeq, Aug 2020]

**Product images:**


Circular map for RC226286



Western blot validation of overexpression lysate (Cat# [LY426795]) using anti-DDK antibody (Cat# [TA50011-100]). Left: Cell lysates from untransfected HEK293T cells; Right: Cell lysates from HEK293T cells transfected with RC226286 using transfection reagent MegaTran 2.0 (Cat# [TT210002]).