

## Product datasheet for **RC226280**

### **TBC1D2B (NM\_144572) Human Tagged ORF Clone**

#### **Product data:**

Product Type:	Expression Plasmids
Product Name:	TBC1D2B (NM_144572) Human Tagged ORF Clone
Tag:	Myc-DDK
Symbol:	TBC1D2B
Mammalian Cell Selection:	Neomycin
Vector:	pCMV6-Entry (PS100001)
E. coli Selection:	Kanamycin (25 ug/mL)



[View online »](#)

**ORF Nucleotide Sequence:**

>RC226280 representing NM\_144572  
 Red=Cloning site Blue=ORF Green=Tags(s)

TTTTGTAATACGACTCACTATAGGGCGGCCGGGAATTCGTCGACTGGATCCGGTACCGAGGAGATCTGCC  
 GCC**CGCATCGCC**

ATGCCGGGGCCGGAGCCGGGGCGGAGGAGGGCGGCGGCGGCGGAGGGCGGCGGCAGGGGGCGGCCG  
 CGGAGCCCGGGCGGGTCCGGCGCGGGAGCCAGCGCGGCTGTGTGGCTATCTGCAGAAGCTGTCCGGCAA  
 GGGCCCCCTGCGTGGCTACCGCAGCCGCTGGTTCTGTTCGACGCGCGCCGCTGTACTCTTACTATTTT  
 AAGAGTCCCGAGGACGCGCTGCCCTCGGCCACTTGGACATCGCGGACGCCTGCTTCAGCTACCAGGGCC  
 CCGACGAGGCGGCGGAGCCGGGCACGGAGCCGCCCGCGCACTTCCAGGTGCACAGCGGGAGCCGTAC  
 GGTGCTCAAGGCTCCAATCGTCAACTCATGACTACTGGTTACAGGAGCTTCAGCAGAAGAGATGGGAA  
 TATTGTAACAGTCTTGACATGGTCAAGTGGACAGCAGGACCTCTCCAATCCCGGGGATTTTCTAAGG  
 GTCTTGTAGCCAGAGATAACACTGATTTAATTTACCCACACCCAAATGCTTCTGCAGAAAAAGCCAGAAA  
 TGTCTAGCTGTGGAGACTGTGCTGGAGAGCTGGTGGGAGAACAAGCTGCAAATCAGCCCGCCCGAGGG  
 CATCCAAATTCATTAATTTTTACTCTTTGAAACAGTGGGGCAATGAGCTCAAGAATTCGATGTCTTCTT  
 TCCGCTCTGGGAGAGACATAATGATAGTCGGAGGACTGTGTTTTATACCAATGAAGAGTGGAACTTTT  
 AGACCCAAACCCTAAGGACCTAGAGGAGTCCATAGTACAGGAAGAAAAGAAGAAGCTGACCCCTGAAGGA  
 AACAAAGGAGTAAGTGGCTCAGGATTCCTTTGATTTTGGACGTAACCCCTACAAGGAAAAGCGCCCTT  
 TGAAAGACATAATTGGTTCGTACAAAAATCGTACAGCAGTGGTACCCTTCAAGTGAAGGCACATCAGG  
 CAGTGGCAGCGTCAGCATCAGGAAGCCGGCCTCCGAAATGCAACTGCAGGTCCAGAGCCAGCAGGAAGAG  
 CTGGAACAGTTAAAGAAAGACCTGTCCAGTCAGAAGGAGCTTGTTCGACTGCTCCAGCAGACAGTCCGGT  
 CATCCAGTATGACAAGTATTTCAAGCAGCCGGCTCTGTGAGGGGGTCCCAAAGGACACGCTCGAGCT  
 TCTGCACCAAAAGGATGATCAGATTCTGGGCCTTACCAGCCAGCTGGAGAGGTTTCACTTGGAGAAGGAG  
 AGTCTTACAGCAGGAAGTAAGGACGCTGAAGAGCAAAGTGGGCGAGCTCAACGAGCAGCTGGGAATGCTCA  
 TGGAGACCATCCAAGCCAAGGACGAGGTATCATCAAGCTCAGCGAGGGCGAGGGCAACGGGCTCCTCC  
 CACCGTGGCGCCAGCTCCCTTCGTTGTGCTGTTGCCAGGGACCAGCTGGAAGTGGACAGGCTGAAA  
 GATAATCTACAGGGGTACAAAACCCAAAACAAATTTCTAATAAGGAGATTTTGGAACTCTCAGCTCTAC  
 GAAGAAATGCAGAAAGGAGAGAGGGATCTGATGGCAAAGTATTCTAGCCTGGAAGCCAAGCTCTGCCA  
 GATAGAAAGTAAATACCTGATATTGCTCCAAGAAATGAAGACACCAGTGTGCTCAGAAGACCAGGGGCC  
 ACCCGGGAGGTATAGCCAGTGTGCTGGAGGATGCTCTGCAGTTGAGAGCCAAGAGCAGCCGGAGCAAG  
 CATTTGTAAACCTCATCTTGTCAAGTGAATATGATATTTATGGGTTACAGGACTGTACCTGAGGATGATGA  
 GGAAGAGAAATGGTTGCCAAGGTCCGCGCGTTGGATCTGAAGACTCTCTACCTCACAGAAAACAGGAA  
 GTCTCCACTGGGGTCAAGTGGGAAAATTTTTGCAAGTACAGTGAACAGGGAGATGATGTGCTCTCCAG  
 AGTTAAAAACCTCATCCGTGCGGGCATCCCCACGAGCACCGTTCCAAGGTGTGGAAAGTGGTGTGTTGGA  
 CCGTACACACCAGGAAGTCAAGGACAACACTGAGCCTGGCCACTTCCAGACCTTGTGCAGAAGGCGCTG  
 GAGAAACAGAACCAGCCTCAAGCAGATTGAGCTGGACTTGTGCGAACTTGCCCAACAACAACATT  
 ACTCTGCCACCTCAGAAGGCATACAGAAGTACGCAATGTCTCTCGCCTTCTCTGGCGGAATCC  
 AGATATCGGCTACTGTCAAGCCATAACAGGTTGGTGGCAGTGGCCCTCCTGTACCTGGAACAAGAAGAT  
 GCTTTCTGGTGTCTCGTTACCATAGTGGAAAGTTTTCATGCCTCGAGACTATTATACAAAGACTCTTTTAG  
 GATCCCAGGTGGACCAGCGGGTGTTCAGAGACCTTATGAGTGAGAAGCTGCCTCGTTGCATGGCCACTT  
 TGAACAGTACAAAGTCGACTACACTCTCATCACTTTCAACTGGTTTCTGGTGGTATTTGTGGATAGTGT  
 GTTAGTGACATCTCTTTAAAATATGGGACTCTTTCTTTATGAAGGACCAAGGTTATTTTCCGTTTTG  
 CTCTGGCACTTTTAAAGTACAAGGAAGAGGAGATTTTGAATGCAAGATTTCGATGTCTATATTTAAGTA  
 TCTCCGCTACTTCACTCGCACTATCCTTGTGCTAGGAAGCTGATCAGTATCTCCTTTGGGACCTGAAC  
 CCTTTCCCTACGCCAGATCCGGAACCGACGCGCTACCACTTGGAGAAAGTCCGGCTGGAGCTGACCG  
 AGCTGGAGGCCATCCGTGAGGACTTCTGCGTGAGCGGGACACCAGCCCTGACAAGGGTGGAGCTGGTCAG  
 TGACGAGGAGGAGGATACC

**ACGCGT**ACGCGGCCGCTCGAGCAGAACTCATCTCAGAAGAGGATCTGGCAGCAAATGATATCCTGGATT  
 ACAAGGATGACGACGATAAGGTTTAA

**Protein Sequence:** >RC226280 representing NM\_144572  
 Red=Cloning site Green=Tags(s)

```

MPGAGARAEEGGGGEGAAQGAAEPGAGPAREPARLCCGYLQKLSGKGPLRGYRSRWFVFDARRCYLYFF
KSPQDALPLGHLDIADACFSYQGPDEAAEPGTEPPAHFQVHSAGAVTVLKAPNRQLMTYWLQELQQRWE
YCNLSLDMVKWDSRTSPTPGDFPKGLVARDNTDLIYPHPNASEAKARNVLAETVPGELVGEQAANQPAPG
HPNSINFYSLKQWGNELKNSMSSFRPGRGHNSRRTVFYTNEEWELLDPTPKDLEESIVQEKKKLTPEG
NKGVTGSGFPPDFGRNPYKGRPLKDIIGSYKNRHSSGDPSSSEGTSGSGSVSIRKPASEMQLQVQSQQEE
LEQLKKDLSSQKELVRLQQTVRSSQYDKYFTSSRLCEGVPKDTLELLHQKDDQILGLTSQLERFSLEKE
SLQQEVRTLKSKVGELENEQLGMLMETIQAKDEVIKLESEGEENGPPPTVAPSSPSVVPVARDQLELDRLK
DNLQGYKTQNKFLNKEILELSALRRNAERRERDLMAKYSSLEAKLCQIESKYLILLQEMKTPVCSEDQGP
TREVIAQLLEDALQVESQEQPEQAFVKPHLVSEYDIYGFRTVPEDDEEKLVAKVRALDLKTLYL TENQE
VSTGVKWENYFASTVNREMMCSPKLNLRIRAGIPHEHRKSVKWCVDRHTRKFKDNTEPGHFQTLQKAL
EKQNPASKQIELDLLRTPNNKHYSCTPSEGIQKLRNVLLAFSWRNPDIGYCGQLNRLVAVALLYLEQED
AFWCLVTIVEVFMPRDYTKTLLGSQVDQRVFRDLMSEKLPRLHGHFEQYKVDYTLITFNWFLVVFVDSV
VSDILFKIWDNFLYEGPKVIFRFALALFKYKEEELKLDQSDMSIFKYLRVYFTRTILDARKLISISFGDLN
PFPLRQIRNRRAHYLEKVRLELELEAIREDFLRERDTSPDKGELVSDEEEDT
  
```

TRTRPLEQKLISEEDLAANDILDYKDDDDKV

**Chromatograms:** [https://cdn.origene.com/chromatograms/mk8034\\_d06.zip](https://cdn.origene.com/chromatograms/mk8034_d06.zip)

**Restriction Sites:** SgfI-MluI

**Cloning Scheme:**

Cloning sites used for ORF Shuttling:



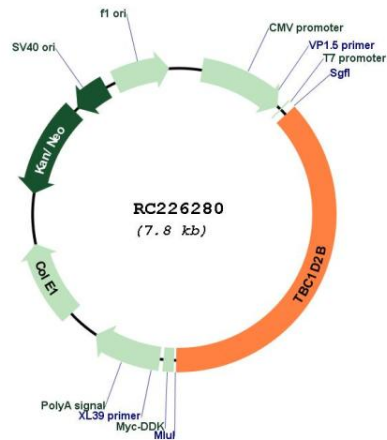
\* The last codon before the Stop codon of the ORF

**ACCN:** NM\_144572

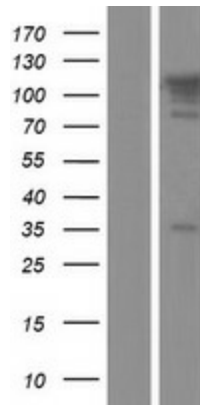
**ORF Size:** 2889 bp

<b>OTI Disclaimer:</b>	The molecular sequence of this clone aligns with the gene accession number as a point of reference only. However, individual transcript sequences of the same gene can differ through naturally occurring variations (e.g. polymorphisms), each with its own valid existence. This clone is substantially in agreement with the reference, but a complete review of all prevailing variants is recommended prior to use. <a href="#">More info</a>
<b>OTI Annotation:</b>	This clone was engineered to express the complete ORF with an expression tag. Expression varies depending on the nature of the gene.
<b>Components:</b>	The ORF clone is ion-exchange column purified and shipped in a 2D barcoded Matrix tube containing 10ug of transfection-ready, dried plasmid DNA (reconstitute with 100 ul of water).
<b>Reconstitution Method:</b>	<ol style="list-style-type: none"><li>1. Centrifuge at 5,000xg for 5min.</li><li>2. Carefully open the tube and add 100ul of sterile water to dissolve the DNA.</li><li>3. Close the tube and incubate for 10 minutes at room temperature.</li><li>4. Briefly vortex the tube and then do a quick spin (less than 5000xg) to concentrate the liquid at the bottom.</li><li>5. Store the suspended plasmid at -20°C. The DNA is stable for at least one year from date of shipping when stored at -20°C.</li></ol>
<b>RefSeq:</b>	<a href="#">NM_144572.1</a> , <a href="#">NP_653173.1</a>
<b>RefSeq ORF:</b>	2892 bp
<b>Locus ID:</b>	23102
<b>UniProt ID:</b>	<a href="#">Q9UPU7</a>
<b>Cytogenetics:</b>	15q24.3-q25.1
<b>Protein Families:</b>	Transcription Factors
<b>MW:</b>	109.7 kDa
<b>Gene Summary:</b>	May act as a GTPase-activating protein.[UniProtKB/Swiss-Prot Function]

Product images:



Circular map for RC226280



Western blot validation of overexpression lysate (Cat# [LY430114]) using anti-DDK antibody (Cat# [TA50011-100]). Left: Cell lysates from untransfected HEK293T cells; Right: Cell lysates from HEK293T cells transfected with RC226280 using transfection reagent MegaTran 2.0 (Cat# [TT210002]).