

Product datasheet for **RC226276**

MDGA2 (NM_001113498) Human Tagged ORF Clone

Product data:

Product Type:	Expression Plasmids
Product Name:	MDGA2 (NM_001113498) Human Tagged ORF Clone
Tag:	Myc-DDK
Symbol:	MDGA2
Synonyms:	c14_5286; MAMDC1
Mammalian Cell Selection:	Neomycin
Vector:	pCMV6-Entry (PS100001)
E. coli Selection:	Kanamycin (25 ug/mL)



[View online »](#)

ORF Nucleotide Sequence:

>RC226276 representing NM_001113498
 Red=Cloning site Blue=ORF Green=Tags(s)

TTTTGTAATACGACTCACTATAGGGCGGCCGGGAATTCGTCGACTGGATCCGGTACCGAGGAGATCTGCC
 GCC**CGGATCGCC**

ATGGATTTACTGTACGGTCTCGTGTGGCTGCTGACAGTCTCTGGAGGGGATCTCTGGCCAAGGAGTGT
 ACGCTCCTCCACGGTTTGTATTGTGCACTCAGGCTTGGCCTGTAACATTGAAGAGGAGCGCTACTCCGA
 AAGGGTCTACACTATCCGGGAAGGAGAAAACCTTGAGTTGACTTGTCTAGTCACAGGACATCCACGTCCA
 CAGATCAGGTGGACAAAACAGCAGGAAGTGCCTCTGACAGATCCAAGACTCAAGTGTCTTCAATGAGA
 CTTTGAGGATTACAAATATTCAGCGACACCAAGGAGGCCGGTATTACTGTAAGCAGAGAATGGCTTGGG
 GTCTCCAGCGATAAAGTCAATCAGAGTGGATGTATACTATTTGGATGATCCAGTAGTAACTGTTCAATCAA
 AGTATAGTGAAGCTAAGAACAATTTTACTATGAGAGAACAGTGTTCCTCCGGTGTGTGCCAATTCCA
 ATCCTCCTGTTCCGTATAGCTGGAGACGTGCCAGGAGGTCTTGTGCAAGGATCTGATAAAGGAGTTGA
 GATTTATGAACCATTCTTACCAGGGTAAAACAAGATCTTAAACTAAAGAATCTTCGACCTCAGGAC
 TATGCTAATTATAGCTGCATTGCTTCAGTGAGGAATGTATGTAATATTCCTGATAAGATGGTGTCTGTTA
 GACTGTCCAATAAAACAGCATCACCGTCAATTAACCTCTTGGTGGATGATCCTATAGTTGTAATCCTGG
 AGAGGCCATAACATTAGTATGTGTTACAACAGGAGGAGAGCCTGCACCTTCTCTCACCTGGGTGAGTCC
 TTTGGGACTCTGCCTGAAAAGACTGTTTTGAATGGAGGAACTTTGACCATACCTGCCATCACCTCAGATG
 ATGCTGGTACTTACAGCTGCATTGCCAATAATAATGTGGGAAACCTGCAAAAAAGTCCACCAACATCAT
 TGTGAGAGCATTAAAAAAGGACGATTTGGATCACACCAGATCCTTATCACAAGATGACAACATCCAG
 ATTGGCCGTGAGGTGAAAATATCTTGCACAGTGAAGCTGTTCTTCTGAGGAGCTAACATTTAGTTGGT
 TTAATAATGGTGTCCATTAAGAAGTTCTGAGCCGGATGGTATTACACAGACTGATCCTGATGTCTCC
 GGAACAACAACAACTTGGACATCATTGATTTAAATTCACGGATTTTGGGACGTACACATGTGTAGCATCT
 CTGAAGGGAGGAGGAATATCTGATATCAGTATCGATGTTAATATATCCAGCAGCACAGTCCACCAATC
 TGACTGTTCCACAGGAAAAATCACCATTTGGTCCACAGAGAAGGAGACACAATAGAAGTGCATGTCAAGT
 AACTGGCAAACTAAACCAATCATCCTTTGGTCTAGAGCGGATAAAGAAGTTGCAATGCCTGATGGATCA
 ATGCAATGGAGAGTTATGATGGAACACTGAGGATTGTGAATGTATCTAGGAAATGTCAGGAATGTACA
 GATGTCAGACCAGCCAATACAATGGATTAACGTGAAACCAAGGGAAGCCTTGGTGCAGCTCATCGTTCA
 GTATCCCCCTGCAGTGAACACAGCATTCTTGGAAATCCGGCAAGGACAGGATCGAAGTGTCACTATGAGT
 TGCAGAGTACTGAGAGCCTATCCAATACGGGTGCTGACCTATGAGTGGCGCTTGGCAATAAATTATTAC
 GGACGGGTCAATTTGACTCTCAGGAATACACAGAGTACGCTGTGAAGAGTCTTCCAATGAAAACATGG
 GTTTTATAACTGTAGCATCATAAATGAAGCTGGAGCTGGGAGATGCAGCTTTCTTGTACAGGAAAGGCC
 TATGCTCCAGAATTCTATTATGATACCTACAATCCAGTATGGCAGAACAGACACCGTGTATTCTTACA
 GTCTACAGTGGACACAGATGAATCCTGATGCAGTGGATCGGATTGTTGCATACCGGTTGGGCATCAGGCA
 GGCTGGACAGCAGCGCTGGTGGGAGCAGGAGATTAATAAATGGGAATATTCAAAGGGGAGAATTAATT
 ACATATAACTTGACAGAGCTAATTAACCAGAAGCTTATGAAGTCCGACTGACTCCTCTCACCAAAATTTG
 GTGAAGGAGATTCAACAATTCGTGTGATCAAATATAGTGTCTCTGTAATCCTCATTGAGAGAATTTCA
 TTGTGGATTTGAAGATGGTAATATTTGTTTGTCTCAAGATGATACAGATAATTTTACTGGACAAAAG
 CAAAGTACAGCAACAAGAAATACAAAATATACTCCTAATACAGGACCTAATGCTGACCGTGTGGCTCCA
 AAGAAGGTTTTTATGTACATTGAGACATCACGACCCAGATTGGAAGGCGAAAAGGCTCGACTTCTCAG
 CCCTGTTTTAGCATAGCTCCAAAAACCTTATGGACCCACAAACACTGCATATTGTTTCACTTCTTT
 TATCACATGTATGGACAACATATAGGTGTCTTAAATGTTTATCTACGTTTGAAGGGCAACAACAATAG
 AGAATCCACTGTGGTCTTCAAGTGGGAATAAAGGACAAAGATGGAATGAGGCTCATGTTAATATATACCC
 AATTACTTCAATTCAGCTCATTTTTGAAGGTATCCGAGGCTTGGAAATAGAAGGTGACATTGCTATTGAT
 GATGTATCAATTGCAGAAGGAGAATGTGCAAAAACAAGACCTAGCAACTAAGAATCCGTTGATGGTGTCT
 TTGGGATTTGGTTCATATATGGCTTTTCCCATTATCGTCTCATCTCTATCTTAAGTCTCGAAGG

ACGCGTACGCGGCCGCTCGAGCAGAAAACCTCATCTCAGAAGAGGATCTGGCAGCAAATGATATCCTGGATT
 ACAAGGATGACGACGATAAGGTTTAA

Protein Sequence: >RC226276 representing NM_001113498
Red=Cloning site Green=Tags(s)

```
MDLLYGLVWLLTVLLEGISGQGVYAPPTVRIVHSLACNIEEERYSERVYTIREGETLEL TCLVTGHPRP
QIRWTKTAGSASDRFQDSSVFNETLRITNIQRHQGGRYCKAENGLGSPAIKSIRVDVYYLDDPVVTVHQ
SIGEAKEQFYERTVFLRCVANSNPPVRYSWRRGQEVLLQGSDKGVEIYEPFFTQGETKILKLNLRPQD
YANYSCIASVRNVCNIPDKMVSFRLSNKTASPSIKLLVDDPIVVPNGEAITLVCVTTGGEPAPSLTWRS
FGTLPEKTVLNGGTLTIPAITSDDAGTYSCIANNVGNPAKKSTNIIVRALKKGRFWITPDPYHKDDNIQ
IGREVKISCQVEAVPSEELTFWFKNGRPLRSSERMVITQTPDVSPGTTNLDIIDLKFTDFGTYYCVAS
LKGGGDISDISIDVNISSSTVPPNLTVPQEKSPLVTREGDTIELQCQVTGKPKPIILWSRADKEVAMPDGS
MQMESYDGTLRIVNVSREMSGMYRCQTSQYNGFNVKPREALVQLIVQYPPAVEPAFLEIRQGQDRSVTMS
CRVLRAYPIRVLTYEWRLGNKLLRTGQFDSQEYTEYAVKSLSNENYGVYNCIINEAGAGRCSFLVTGKA
YAPEFYDYDYNPWNQNRHRVYSYSLQWTQMNPDVDRIVAYRLGIRQAGQQRWWEQEIKINGNIQKGLI
TYNLTELKPEAYEVRLTPLTKFGEGDSTIRVIKYSAPVNPHLREFHCGFEDGNICLFTQDDTDNFDWTK
QSTATRNTKYTPNTGPNADRSGSKEGFYMYIETSRPRLEGEKARLLSPVFSIAPKNPYGPTNTAYCFSFF
YHMYGQHIQVNLVYLRLLKGQTTIENPLWSSSGNKQRWNEAHVNIYPITSFQLIFEGIRGPGIEGDIAID
DVSIAEGECAKQDLATKNSVDGAVGILVHIWLFPIIVLISILSPRR
```

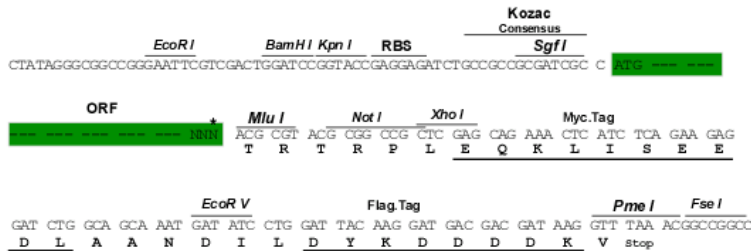
TRTRPLEQKLISEEDLAANDILDYKDDDDKV

Chromatograms: https://cdn.origene.com/chromatograms/mk8006_b03.zip

Restriction Sites: SgfI-MluI

Cloning Scheme:

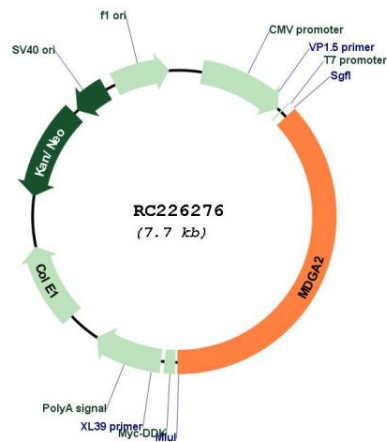
Cloning sites used for ORF Shuttling:



ACCN: NM_001113498

ORF Size: 2868 bp

OTI Disclaimer:	The molecular sequence of this clone aligns with the gene accession number as a point of reference only. However, individual transcript sequences of the same gene can differ through naturally occurring variations (e.g. polymorphisms), each with its own valid existence. This clone is substantially in agreement with the reference, but a complete review of all prevailing variants is recommended prior to use. More info
OTI Annotation:	This clone was engineered to express the complete ORF with an expression tag. Expression varies depending on the nature of the gene.
Components:	The ORF clone is ion-exchange column purified and shipped in a 2D barcoded Matrix tube containing 10ug of transfection-ready, dried plasmid DNA (reconstitute with 100 ul of water).
Reconstitution Method:	<ol style="list-style-type: none"> 1. Centrifuge at 5,000xg for 5min. 2. Carefully open the tube and add 100ul of sterile water to dissolve the DNA. 3. Close the tube and incubate for 10 minutes at room temperature. 4. Briefly vortex the tube and then do a quick spin (less than 5000xg) to concentrate the liquid at the bottom. 5. Store the suspended plasmid at -20°C. The DNA is stable for at least one year from date of shipping when stored at -20°C.
RefSeq:	<u>NM_001113498.2</u> , <u>NP_001106970.3</u>
RefSeq ORF:	2871 bp
Locus ID:	161357
UniProt ID:	<u>Q7Z553</u>
Cytogenetics:	14q21.3
Protein Families:	Druggable Genome, Transmembrane
MW:	107.3 kDa
Gene Summary:	May be involved in cell-cell interactions.[UniProtKB/Swiss-Prot Function]

Product images:


Circular map for RC226276