

## Product datasheet for **RC226275**

### SMARCAL1 (NM\_001127207) Human Tagged ORF Clone

#### Product data:

|                           |  |
|---------------------------|--|
| Product Type:             | Expression Plasmids                            |
| Product Name:             | SMARCAL1 (NM_001127207) Human Tagged ORF Clone |
| Tag:                      | Myc-DDK  |
| Symbol:                   | SMARCAL1                                       |
| Synonyms:                 | HARP; HHARP                                    |
| Mammalian Cell Selection: | Neomycin                                       |
| Vector:                   | pCMV6-Entry (PS100001)                         |
| E. coli Selection:        | Kanamycin (25 ug/mL)                           |



[View online »](#)

**ORF Nucleotide Sequence:**

>RC226275 ORF sequence  
 Red=Cloning site Blue=ORF Green=Tags(s)

TTTTGTAATACGACTCACTATAGGGCGGCCGGAATTCGTCGACTGGATCCGGTACCGAGGAGATCTGCC  
 GCC**CGCATCGCC**

ATGTCCTTGCCTCTTACAGAGGAGCAGAGGAAAAAGATTGAAGAGAATCGACAAAAGGCTCTGGCCCGCA  
 GAGCTGAGAAGTTATTGGCAGAACAGCATCAGAGGACTAGCTCGGGCACCTCCATTGCTGGCAACCCATT  
 CCAGGCCAAGCAAGGCCCATCCCAAAATTTCCCAAGGGAGTCTTGTAAAGCCAGTGAGCCATGGTGTCTATT  
 TTCAAGCAACAGAATCTCAGTAGCTCATCTAATGCTGACCAAAGACCTCATGATCCACAGTTCCTCAGG  
 CAAAGGGAATATGGAAAAAGCCAGAAGAAATGCCACAGCCTGCCAGGCCACAGTCCACGTAGTCAAAT  
 GGCTCTCACTGGAATCTCTCCTCCCTTGGCACAAAGTCTCCAGAGGTCCTAAACAACAGCTCTTGAGT  
 TATGAGTTAGGTCAAGGTATGCTCAGGCTTACCTGAGATCAGGTTACACCCTTTGCTAACCCAACCTC  
 ATAAGCCTCTGGCAAACCAAGAGTTCCTCAAGAGACACCAGCTATTCTCTGGACAGCCTCCAGGGA  
 TGCTAAGTTAGAGGCCAAGACAGCAAAGCCTCCCTTCCGGGCGAGAATTTCTTACATCCATTCTAGC  
 TCAGAGAGTGTAAAGCCAGGACAGAAGGAAGACTCCAGCAGAAGTCCAGGTCCTCAGTCCAAAAAGGAG  
 TGAATCTCAGAAGGGAAGTGCCTAAGGAACGGCGATCGTTCCAGGTGTTGATTGGGTACAATGCCGA  
 ACTCATTGCAGTGTAAAGACCTGCCAGCAAGAATTATGATCCTGACACCAAGACGTGGAACCTCAGC  
 ATGAATGACTATAGTGCCTGATGAAAGCAGCCAGAGCCTCCACACGGTCAACCTGCAGCCTCTGGAA  
 GGGCCTATGGCAGCAGCGAGTCAACCTCCACCAGCAGTGAGGGACAGGCCGGCCTCCATCAGCTCCATC  
 CCTTTCATTTGTCAAAGGGCGATGCATGCTCATCTCCAGGGCCTACTTCGAGGCAGACATCAGTTATTCA  
 CAGGACCTATTGCGCTTTTTAAACAGATGGATTCCAGAAGATATGATGTCAAGACCAGGAAGTGGAGCT  
 TTCTCTTGAAGAGCACAGTAACTAATTGCAAGGTGCGCTGCCTCCACAAGTTCAGCTGGACCTCT  
 GCCACAGCTCTACCCTGGCGTTTGCTTCTCAGCTCAAGAAGACATCTCTCAGTCTCACGCCAGATGTC  
 CCAGAGGCAGACCTTTCTGAAGTGGACCCCAAGCTCGTGTCTAATCTGATGCCCTTTAGAGAGCTGGAG  
 TCAATTTTGCATAGCCAAAGGAGGCCGCTGCTGCTCGCTGACGACATGGGCCTGGGGAAGACCATCCA  
 AGCCATCTGCATCGCAGCCTTTTACCGAAGGAGTGGCCGCTCCTGGTGGTGGTCCATCTCCGTGCGC  
 TTCACCTGGGAGCAGGCCTTCTTCGGTGGTGCATCTCTGAGCCAGATTGCATCAACGTCTGGTGA  
 CTGGGAAGGACCCCTGACAGCTGGCCTGATCAACATTGTCAGCTTTGACCTTCTAGCAAGTTGGAAAA  
 ACAGCTAAAAACCCCTTTTAAAGTTGTCATCATTGATGAATCTCACTTCCCTAAAAACAGTAGGACTGCC  
 CGCTGTCGAGCAGCTATGCCGCTCTAAAGGTTGCCAAGAGGGTATCCTGTTGTCGGGCACACCAGCCA  
 TGTCGCCGCCCGCAGAGCTCTACACGCAGATCATCGCAGTCAAGCCAACCTTTCTTCCCCAGTTTATGC  
 CTTTGGACTTCGCTACTGTGATGCCAAACGGATGCCTTGGGGTGGGACTACTCAGGTTCTCCAACCTG  
 GGAGAGCTGAAGCTCCTGCTGGAGGAAGCAGTCATGCTGCGGCGCCTCAAGTCCGACGCTCTTTCCAGC  
 TGCTTCCAAAGCAGCGCAAGATAGTGGTATTGCCCCAGGACGGATCAATGCCAGGACCAGAGCTGCCCT  
 GGATGCTGCAGCAAGGAAATGACCACCAAGGACAAAACCTAAACAGCAGCAGAAAGATGCCCTCATTCTC  
 TTCTTCAACAGAACAGCTGAAGCTAAAAATCCCATCTGTCATTGAATATATCTTGGACCTACTGAAAAGT  
 GAAGAGAGAAGTTTTAGTATTTGCACACCATAAGGTGGTCTGGACGCAATTACGCAAGAGCTTGAGAG  
 AAAGCAGTGCAGCACATCCGCATCGATGGCTCCACCTCATCAGCTGAGCGGGAGGACCTGTGCCAGCAG  
 TTCCAAGTGTGAGAGAGGCATGCTGTGGCGTGTGTCATACCAGTCCCAATATGGGCTCACCTTCT  
 CCTCGGCTGACCTGGTGGTGTGTTGCTGAGCTGTTTGGAAACCCAGGGTGTGATCCAGGCTGAGGACCG  
 CGTGCACCGCATTGGACAGACCAGCTCCGTGGCATTCACTACCTCGTGGCAAAGGGCACAGCTGATGAC  
 TACCTTTGGCCCTGATTCAAGAGAAGATTAAGTTCTGGCAGAAGCCGGCTTTCTGAGACCAATTTTT  
 CAGAAATGACAGAATCCACTGATTACCTCTACAAGGACCCAAAGCAGCAGAAAGATCTACGACCTATTCCA  
 GAAGTCTTTGAGAAAGAAGGAAGTATGAGGCTCCTGGAAGCAGCAGAGTCTTTGACCCAGGAAGT  
 GCTTCAGGAACATCTGGAAGTAGTCCCAAGACATGGGAGACACCCTGGATGAAAGCTCATTGACAGCCA  
 GTCCACAGAAGAAAAGGAGATTTGAATTTTTGATAACTGGGACAGCTTACGTCTCCCTG

**ACGCGT**ACGCGGCCGCTCGAGCAGAACTCATCTCAGAAGAGGATCTGGCAGCAAATGATATCCTGGATT  
 ACAAGGATGACGACGATAAGGTTTAA

**Protein Sequence:** >RC226275 protein sequence  
Red=Cloning site Green=Tags(s)

```
MSLPLTEEQRKKIEENRQKALARRAEKLLAEQHQRSSSGTSIAGNPFQAKQGSPQNFPRESCKPVSHGVI
FKQONLSSSSNADQRPDHSFSFQAKGIWKKPEEMPTACPGHSPRSQMALTGISPLAQSPPEVPKQQLLS
YELGQGHAAQASPEIRFTPFANPTHKPLAKPKSSQETPAHSSGQPPRDAKLEAKTAKASPSGQNI SYIHSS
SESVTPRTEGRLQKQSGSSVQKGVNSQKGCVRNGDRFQVLIGYNAELIAVFKTLPSKNYDPDTKTWNFS
MNDYSALMKAQSLPTVNLQPLEWAYGSSESPSTSSEGGAGLPSAPLSFVKGRCLISRAYFEADISYS
QDLIALFKQMDSTRRYDVKTRKWSFLLEEHSKLIKVRCLPQVQLDPLPTTLTAFASQLKKTSLSTLTPDV
PEADLSEVDPKLVSNLMPFQRAGVNFIAKGGRLLLADDMGLGKTIQAICIAAFYRKEWPLL VVVPSVSR
FTWEQAFRLRWLPSLSPDCINVVVTGKDRLTAGLINIVSFDLLSKLEKQLKTPFKVVIIDESHFLKNSRTA
RCRAAMPVLKVAKRVILLSGTPAMSRPAELYTQIIAVKPTFFPQFHAFGLRYCDAKRMPWGDYSGSSNL
GELKLLLEEAVMLRRLKSDVLSQLPAKQRKIVVIAPGRINARTRAAALDAAKEMTTKDKTKQQKDALIL
FFNRTAEAKIPSVIEYILDLLLESGREKFLVFAHHKVVLDAITQELERKHVQHIRIDGSTSSAEREDLCQQ
FQLSERHAVAVLSITAAANMGLTFSSADLVVFAELFWNPGVLIQAEDRVHRIGQTSVYGIHYLVAKGTADD
YLWPLIQEKIKVLAEAGLSETNFSEMTESTDYLKDPKQKQIYDLFQKSFKEGSDMELLEAAESFDPGS
ASGTSGSSSQNMGDTLDESSLTASPQKRRFEFFDNWDSFTSPL
```

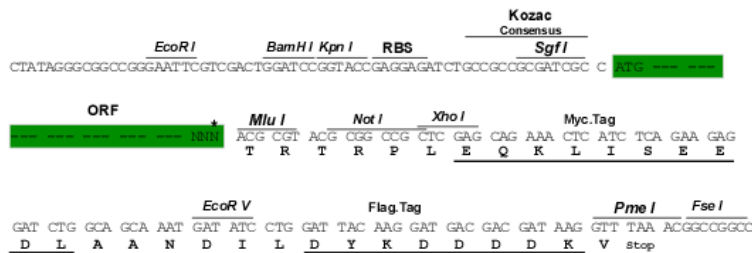
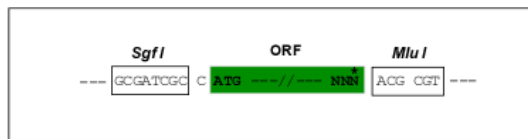
TRTRPLEQKLISEEDLAANDILDYKDDDDKV

**Chromatograms:** [https://cdn.origene.com/chromatograms/mk6089\\_d03.zip](https://cdn.origene.com/chromatograms/mk6089_d03.zip)

**Restriction Sites:** SgfI-MluI

**Cloning Scheme:**

Cloning sites used for ORF Shuttling:



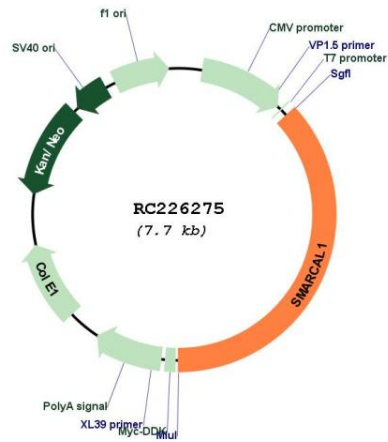
\* The last codon before the Stop codon of the ORF

**ACCN:** NM\_001127207

**ORF Size:** 2862 bp

|                               |  |
|-------------------------------|--|
| <b>OTI Disclaimer:</b>        | The molecular sequence of this clone aligns with the gene accession number as a point of reference only. However, individual transcript sequences of the same gene can differ through naturally occurring variations (e.g. polymorphisms), each with its own valid existence. This clone is substantially in agreement with the reference, but a complete review of all prevailing variants is recommended prior to use. <a href="#">More info</a>   |
| <b>OTI Annotation:</b>        | This clone was engineered to express the complete ORF with an expression tag. Expression varies depending on the nature of the gene.   |
| <b>Components:</b>            | The ORF clone is ion-exchange column purified and shipped in a 2D barcoded Matrix tube containing 10ug of transfection-ready, dried plasmid DNA (reconstitute with 100 ul of water).   |
| <b>Reconstitution Method:</b> | <ol style="list-style-type: none"><li>1. Centrifuge at 5,000xg for 5min.</li><li>2. Carefully open the tube and add 100ul of sterile water to dissolve the DNA.</li><li>3. Close the tube and incubate for 10 minutes at room temperature.</li><li>4. Briefly vortex the tube and then do a quick spin (less than 5000xg) to concentrate the liquid at the bottom.</li><li>5. Store the suspended plasmid at -20°C. The DNA is stable for at least one year from date of shipping when stored at -20°C.</li></ol>  |
| <b>RefSeq:</b>                | <a href="#">NM_001127207.2</a>   |
| <b>RefSeq Size:</b>           | 3095 bp  |
| <b>RefSeq ORF:</b>            | 2865 bp  |
| <b>Locus ID:</b>              | 50485  |
| <b>UniProt ID:</b>            | <a href="#">Q9NZC9</a>   |
| <b>Cytogenetics:</b>          | 2q35   |
| <b>Protein Families:</b>      | Druggable Genome   |
| <b>MW:</b>                    | 105.9 kDa  |
| <b>Gene Summary:</b>          | The protein encoded by this gene is a member of the SWI/SNF family of proteins. Members of this family have helicase and ATPase activities and are thought to regulate transcription of certain genes by altering the chromatin structure around those genes. The encoded protein shows sequence similarity to the E. coli RNA polymerase-binding protein HepA. Mutations in this gene are a cause of Schimke immunoosseous dysplasia (SIOD), an autosomal recessive disorder with the diagnostic features of spondyloepiphyseal dysplasia, renal dysfunction, and T-cell immunodeficiency. [provided by RefSeq, Jul 2008] |

Product images:



Circular map for RC226275