

## Product datasheet for **RC226271**

### Ataxin 7 (ATXN7) (NM\_001128149) Human Tagged ORF Clone

#### Product data:

Product Type:	Expression Plasmids
Product Name:	Ataxin 7 (ATXN7) (NM_001128149) Human Tagged ORF Clone
Tag:	Myc-DDK
Symbol:	Ataxin 7
Synonyms:	ADCAII; OPCA3; SCA7; SGF73
Mammalian Cell Selection:	Neomycin
Vector:	pCMV6-Entry (PS100001)
E. coli Selection:	Kanamycin (25 ug/mL)



[View online »](#)

ORF Nucleotide  
Sequence:

>RC226271 representing NM\_001128149  
Red=Cloning site Blue=ORF Green=Tags(s)

TTTTGTAATACGACTCACTATAGGGCGGCCGGAAATTCGTCTGACTGGATCCGGTACCGAGGAGATCTGCC  
GCC**CGCATCGCC**

ATGTCGGAGCGGGCCGGATGACGTCAAGGGAGCGCCGCCGGCGGGCGGGCGGGCGGGCGGGAGCAG  
CGGCCGCGGCCGGCCGGCAGCAGCAGCAGCAGCAGCAGCAGCAGCAGCAGCAGCAGCAGCAGCCGCCCTCCGAGCCCCAGCG  
GCAGCAGCACCCGCCACCGCCGCACGGCGCACACGGCCGGAGGACGGCGGGCCCCGGCGCCCTCCACC  
TCGGCCGCGCAATGGCGACGGTCGGGGAGCGCAGGCCTCTGCCAGTCTGAAGTGATGCTGGGACAGT  
CGTGGAATCTGTGGTTGAGGCTTCAAATCTCTGGGAAGGACGGGACAGAATTGGACGAAAGTTTCAA  
GGAGTTTGGGAAAAACCGCAAGTCATGGGGCTCTGTCCGGAAGACATGCCAATATTTGGTTTCTGTCCA  
GCCCATGATGATTTCTACTTGGTGTGTAACTGTATTCAGGTGTCAAACCGCAGGCATTTCAAT  
CACATTATGAAAGAAGACATAGCTCATCCAGCAAGCCGCTTGGCCGTTCTCCCACTTCAGTATTTTC  
CTTCTCCCTTCTGTCCAAAAGCAAAGGAGGCAGTGAAGTGAAGCAACCGTTCTCCAGTGGAGGT  
GTTCTTAGCGCATCTCAAGTTCCAAAGTGTGAAATCACCCAAAGAGAAAATGCAGCTCAGGGGGA  
ACACCAGGCCAATGCATCCCATTAGCAAAAGTAGAGTTCCTCCATGGTAGAATCATGACACCTCTGTGAA  
AGTGGAAAAGATTCAATCCGAAAATGGATGGCACACTACTGAAATCTCGGTGGGGCCAACTGTCCTGTCT  
ACTGTGAGTTCCTTAGTCAAGCCTGGCCTTAACTGCCCTCAATACCAAAGCCAACCTTGCCCTCACCTG  
GACAGATTCTGAATGGCAAAGGGCTTCTGACCCGCCACTCTGGAAAAGAACTGAAGACAATTTCAA  
TAATAGGAAATTTTTAAATAAGAGATTATCAGAAAGAGAGTTTGTCTGACATCCACTGTGGGGTTATT  
GATCTCGACACCAAGAAGCCCTGCACCCGGTCTTTGACATGCAAGACACATTCTTAACCCAGCGCAGGG  
CTGTCCAGGGTAGAAGAAAACGATTTGATGTGTTATTAGCCGAGCACAAAAACAAACAGGGAAAAGGA  
ATTGATTCGCCATCCGGACTCTCAGCAACCACCGCAGCCTCTCAGGGACCCGCATCCCGCCCCTCCTAGA  
ACGTACAGGAGCCGCACAAAACCTCACGGAGTGATTCCTCCGAATCAAAGCCTTTGTAGCTAGTA  
AACCTAACTCACACCCCACTCCTCAAGGCTCCAGGCTGCCCTGCTCAGCAAGGTGGGAGTGGCC  
CATTGACCCTCTCCAGTCCATGAATCTCACACCCTCCCTGCCCTGCACTGAGCCAGTTCTCGGTTA  
TCCAGTGAGGAGGGGAAGGGATGACAAAAGAAGTCTGTTGAAAACCTGGACTGTCATTATTCAGGTC  
ATCATCTCAGCCAGCATTTTTGACATTTGGGAGCCGCAGATAGGAAGAGGCTATTACGTGTTTGA  
CTCCAGGTGGAATCGACTTCGTCGCCCCTCAACCTCATGGTGGAGAAGCATCTGAATGCACAGCTATGG  
AAGAAAATCCCACAGTCCCAGTACCACCTCACCCATCTCCACACGTATTCTCACCGGACAACTCTG  
TGCCGACATCACAAATGTGGAGTCACTATCTGGCAGCAGCCACCTCTACATCCCAGTCTGTCTCTC  
ATCTACCTGCATCTCCCAAATAGCAAATCGGTACCAGCTCATGGAACCACACTAAATGCACAGCCTGTCT  
GCTTACGGGGCGATGGATCCTGTGTGAGTATGCAATCCAGACAAGTGTCTCTTCATCTCATCCCCTT  
CCACGCCCTCTGGCCTTCTCGGTTCTTCTCCCCATGTCCAGGAAACCTCAGAAATGAAATCCAG  
CAAATCTTTGAGGCCAAGGAGTCTTCTGGTAAACAGCACTAACTGTCAAATGCCAGTAGCAGTACCAGT  
GGCGGCTCAGGAAAAGAACGCAAAAACAGTTCACCACTGTTGGTTCACTTCTCTCTCTCTCTCTCTCTCTCT  
CCTCCTCTCTCTCTATCCATGGAGTCTTTAGGAAAACTGTGTGGCTCACTCTGGGCCTCCCTACCC  
CTCAACGGTAACATCTTCCATAGCATCGGCTCAACTGTGTGACGAATAAGCAAAATCCGGTGAACGTC  
CGGCATGACCAGTCAGGGAGGGGCCCCACCGGAGCCCTGCTGAATCCATCAAGAGGATGAGTGTGA  
TGGTGAACAGCAGTGATCTACTCTTCTCTGGCCATTATTACACAGTCCAATGAAGTGCCTGTCAA  
CTCCACGGCAGTTTTTCCCACTCACACTCCTCTAGACAACTCATAGGAAAGAAAAGAAAGTGTCTCA  
CCCAGCTCGAGCAGCATCAACAACAGCAGCAGCAAACCCACAAAGGTTGCCAAAGTGCCAGCCGTGAACA  
ATGTCCACATGAAACACACAGGCACCATCCAGGGGCACAAGGACTGATGAACAGTTCCCTCTTCATCA  
GGATATCTCTCACCTTGCTTACGAACAGGAATTTAGCAACATCACCCAGAGCCCTGACTTAAATCC  
AAAGGCAGTCCCTGACAGCTGAAATAGCACGGGAGGAATAATGCGGACACTTTTGAGGACAAGTTAC  
ACCTCAGTCACTGACTCCACGATGCCTT

**ACGCGT**ACGCGGCGGCTCGAGCAGAAAACCTCATCTCAGAAGAGGATCTGGCAGCAAATGATATCCTGGATT  
ACAAGGATGACGACGATAAGGTTTAA

**Protein Sequence:** >RC226271 representing NM\_001128149  
 Red=Cloning site Green=Tags(s)

```
MSERAADDVRGEP RRAAAAAGGAAAAAARQQQQQQQQPPPPQPQRQQHPPPPRRTRPEDGGPGAAS
TAAAMATVGERRPLPSPEVMLGQSWNLWVEASKLPKGDGTELDESFKEFGKNREVMGLCREDMPIFGFCP
AHDDFYL VVCNDCNQVVKPQAFQSHYERRHSSSSKPLAVPPTS VFSFFPSLSKSKGGSASGSNRSSGG
VLSASSSSKLLKSPKEKQLRGNTRPMHPIQQSRVPHGRIMTPSVKVEKIHPKMDGTLLKSAVGPTCPA
TVSSLVKPGLNCPSPKPTLPSPGQILNGKGLPAPPTLEKKPEDNSNNRKFNLKRLSEREFDPDIHCGVI
DLDTKKPCTRSLTCKTHSLTQRRAVQGRKRFDVLLAEHKNKTREKELIRHPDSQQPQLRDPHPAPPR
TSQEPHQNPBGVIPSSEKPFVASKPKPHTPSLPRPPGCPAQGGGSAIDPPPVHESPHPLPATEPASRL
SSEEGEGDDKEESVEKLDCHYSGHHPQASFCFGRQIGRGGYVFDNRWNRLRCALNLMVEKHLNAQLW
KKIPPPVSTTSPISTRIPHRTNSVPTSQCQVSYLAAATVSTSPVLLSSTCISPNSKSVPAHGTTLNAQPA
ASGAMPVCSMQSRQVSSSSSSPSTPSGLSSVPSSPMSRKPQKLSKSLRPKSSGNSTNCQNASSTS
GGSGKRRKNSSPLL VHSSSSSSSSSSSSHMESFRKNCVAHSGPPYPSTVTSHSIGLNCVTNKANAVNV
RHDQSGRGPPTGSPAESIKRMSVMVNSSDSTLSLGPFIHQSNELPVNSHGSFSSHTPLDKLIGKRRKCS
PSSSSINSSSKPTKVAKVPVAVNNVHMHTGTIPGAQGLMNSLLHQDISPCLRTGISATSPQSPDLKS
KGTSLTAENSTGRNADTFEDKHLHLSALWTPRCL
```

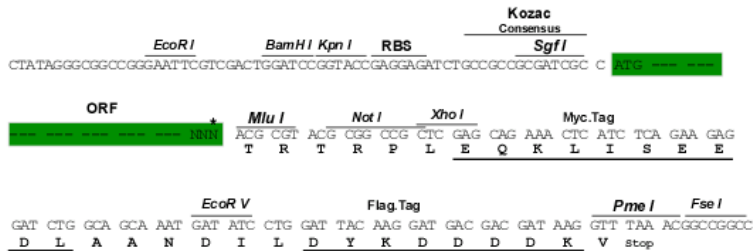
TRTRPLEQKLI SEEDLAANDILDYKDDDDKV

**Chromatograms:** [https://cdn.origene.com/chromatograms/mk8034\\_d07.zip](https://cdn.origene.com/chromatograms/mk8034_d07.zip)

**Restriction Sites:** SgfI-MluI

**Cloning Scheme:**

Cloning sites used for ORF Shuttling:



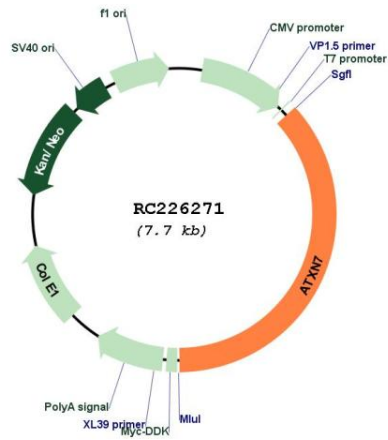
\* The last codon before the Stop codon of the ORF

**ACCN:** NM\_001128149

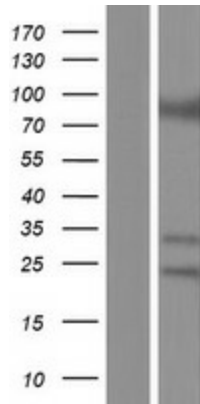
**ORF Size:** 2835 bp

<b>OTI Disclaimer:</b>	The molecular sequence of this clone aligns with the gene accession number as a point of reference only. However, individual transcript sequences of the same gene can differ through naturally occurring variations (e.g. polymorphisms), each with its own valid existence. This clone is substantially in agreement with the reference, but a complete review of all prevailing variants is recommended prior to use. <a href="#">More info</a>
<b>OTI Annotation:</b>	This clone was engineered to express the complete ORF with an expression tag. Expression varies depending on the nature of the gene.
<b>Components:</b>	The ORF clone is ion-exchange column purified and shipped in a 2D barcoded Matrix tube containing 10ug of transfection-ready, dried plasmid DNA (reconstitute with 100 ul of water).
<b>Reconstitution Method:</b>	<ol style="list-style-type: none"><li>1. Centrifuge at 5,000xg for 5min.</li><li>2. Carefully open the tube and add 100ul of sterile water to dissolve the DNA.</li><li>3. Close the tube and incubate for 10 minutes at room temperature.</li><li>4. Briefly vortex the tube and then do a quick spin (less than 5000xg) to concentrate the liquid at the bottom.</li><li>5. Store the suspended plasmid at -20°C. The DNA is stable for at least one year from date of shipping when stored at -20°C.</li></ol>
<b>RefSeq:</b>	<a href="#">NM_001128149.1</a> , <a href="#">NP_001121621.1</a>
<b>RefSeq ORF:</b>	2244 bp
<b>Locus ID:</b>	6314
<b>UniProt ID:</b>	<a href="#">O15265</a>
<b>Cytogenetics:</b>	3p14.1
<b>MW:</b>	101.11 kDa
<b>Gene Summary:</b>	<p>The autosomal dominant cerebellar ataxias (ADCA) are a heterogeneous group of neurodegenerative disorders characterized by progressive degeneration of the cerebellum, brain stem and spinal cord. Clinically, ADCA has been divided into three groups: ADCA types I-III. ADCAI is genetically heterogeneous, with five genetic loci, designated spinocerebellar ataxia (SCA) 1, 2, 3, 4 and 6, being assigned to five different chromosomes. ADCAII, which always presents with retinal degeneration (SCA7), and ADCAIII often referred to as the 'pure' cerebellar syndrome (SCA5), are most likely homogeneous disorders. Several SCA genes have been cloned and shown to contain CAG repeats in their coding regions. ADCA is caused by the expansion of the CAG repeats, producing an elongated polyglutamine tract in the corresponding protein. The expanded repeats are variable in size and unstable, usually increasing in size when transmitted to successive generations. This locus has been mapped to chromosome 3, and it has been determined that the diseased allele associated with spinocerebellar ataxia-7 contains 37-306 CAG repeats (near the N-terminus), compared to 4-35 in the normal allele. The encoded protein is a component of the SPT3/TAF9/GCN5 acetyltransferase (STAGA) and TBP-free TAF-containing (TFTC) chromatin remodeling complexes, and it thus plays a role in transcriptional regulation. Alternative splicing results in multiple transcript variants. [provided by RefSeq, Jul 2016]</p>

Product images:



Circular map for RC226271



Western blot validation of overexpression lysate (Cat# [LY426899]) using anti-DDK antibody (Cat# [TA50011-100]). Left: Cell lysates from untransfected HEK293T cells; Right: Cell lysates from HEK293T cells transfected with RC226271 using transfection reagent MegaTran 2.0 (Cat# [TT210002]).