

Product datasheet for **RC226257**

SLFN14 (NM_001129820) Human Tagged ORF Clone

Product data:

Product Type:	Expression Plasmids
Product Name:	SLFN14 (NM_001129820) Human Tagged ORF Clone
Tag:	Myc-DDK
Symbol:	SLFN14
Synonyms:	BDPLT20
Mammalian Cell Selection:	Neomycin
Vector:	pCMV6-Entry (PS100001)
E. coli Selection:	Kanamycin (25 ug/mL)



[View online »](#)

ORF Nucleotide Sequence:

>RC226257 representing NM_001129820
 Red=Cloning site Blue=ORF Green=Tags(s)

TTTTGTAATACGACTCACTATAGGGCGGCCGGGAATTCGTCGACTGGATCCGGTACCGAGGAGATCTGCC
 GCC**CGCATCGCC**

ATGGAGAGTCTCAAGACTGATACTGAAATGCCGTATCCTGAGGTAATAGTAGATGTGGGCAGAGTGATTT
 TTGGAGAAGAAAACAGGAAGAAGATGACCAACAGCTGTTTGAAAAGATCTGAGAATTCTAGAATTATCCG
 GGCTATATGTGCACTGTTAAATCTGGAGGTGGTGTGATCAAAGCAGAGATTGATGATAAAAACCTATAGT
 TACCAATGCCATGGGCTGGGACAGGATTTGAAACTTCTTTTCAAAGCTCCTTCCCTCAGGTTACAGAA
 AATACCTTGACTACATGCAGCAGGGGCACAATCTCCTGATTTTTGTGAAGTCATGGAGCCCAGATGTTTT
 CAGCCTTCCACTAAGGATTTGCAGCTTGCCTCAATTTGTATCGGAGAGATGTGACTTCTGCTATCAAC
 TTGAGTGTAGCAGTGCCTGGAGCTTCTCAGAGAGAAGGGGTTAGAGCCCAAAGGAAGACCAAGGG
 TGAAGAAGTTGCATCCTCAGCAGGTTCTCAATAGATGCATTAGGAAGAGGAAGATATGAGGATATTGGC
 CTCAGAATTTTTTAAAAGGACAAACTCATGTATAAGGAGAACTCAACTTTACTGAGTCAACACATGTT
 GAATTTAAAAGGTTACCCACAAAAAAGTCATACCTCGGATTAAGGAAATGCTGCCTCATTATGTTTCTG
 CATTGGCCAACACTCAAGGGGGATATGCTCATTGGGGTGGATGATAAGAGCAAAGAAGTGGTTGGATG
 TAAGTGGGAAAAGTGAATCCTGACTTACTAAAAAAGAAATCGAAAAGTGCATAGAAAAATTCCTTACA
 TTCCACTTCTGCTGTGAGAAGCCAAAGGTAATTTCACTACAAAAATCCTGAATGTGTACAAAAAGATG
 TCCTGGATGGTTATGTCTGTGTGATTCAAGTGGAGCCCTTCTGTTGCGTGGTGTTCAGAGGCCCCAGA
 TTCTGGATCATGAAAGACAATTCTGTACACGGCTGACAGCTGAGCAGTGGGTGGTGTGATGCTGGAT
 ACTCAGTCAGCTCCTCCAGTTTGGTACAGACTACAACCTTTGCCTGATTTTCATCAGCTCATATCGCAC
 GAAAAAGTCCCGGATATCCCATAAAAGTCCACAATTTAAGGAGGCTCTGCAACGCAATTTGTTTCCAGT
 GACACAGGAAGAGGTACAATTTAAACCAGAAATCCCTCTGTAAAGAGCTGTTCTCAGATCATAAAGAACTG
 GAGGGTTTAAATGAAGACCCTGATACATCCTTGTCTCAGGGGATTGTGATATTTTCTAGAAGCTGGGCTG
 GTGATGTTGGCTTCAAGAAAGACAGAATGTCCTGTGTGATGCTCCTGATAGCAGTTAACAGCCCGT
 GGTACTCTATACAATCTTAATAGACCCCAATTGGCCTGGAGGACTTGAATATGCCCGAAACACAGCTCAT
 CAGTTAAAGCAGAACTGCAACTGTTGGTGGTTACACAGGAAAGTGTGCATCATTCCAAGGCTGATAC
 ACCTGAGCAGCACACAGAGTAGACCTGGTGTGAGTCCCCCTGCGTTACCCAGGCTCTACAGGCTTGTGA
 TGAGGAGGAAATGGAAGACTTGTGTCAGGCTCTGGTGGTGGTCTCCTGTCTCCAGATCTCTTCTGAGT
 GACCAGATGGGCTGTGAATTTTTCAACTTGCTCATAATGGAGCAGAGCCAGTTGCTTTCTGAGAGTCTTC
 AGAAGACACGTGAATTATTCATCTACTGCTTTCCAGGAGTCAGGAAGACAGCCCTAGCCATAAAGATCAT
 GGAGAAAATTAAGGACTTGTTCCTGCAAAACAAAAGAGATCCTCTATGTTTGTGAAAGCGACTCCCTA
 AAGGATTTTGTGACCCAACAACCACTGCCAAGCTGTGACCAGGAAAACCTTTCATGCAAGGGGAGTTTC
 TAAAGATTAACACATAGTGATGGATGAGACTGAGAATTTCTGCAGCAAAATAGGCAATTTGGTACATGAA
 GGCTAAGAACATCACCCATCCAAAGGCGAAGGGGACTGGAAGTGAACCTTCCCATGGGATCTCTGG
 CTTTTTCTTGACCCTTTTCAATCCATCACGCAGATGTCAATGGCCTTCCCCCTCCATCTGCTCAGTTTC
 CTCGAAAAACAATCACCAGTGGGATCCACTGTGCTCTGGAATAGCGAAGGTTATGAAAGAAGAAATGAA
 GAGGATCAAAGAAAATCCTCCCTCAACATGTCTCCAGACACATTAGCATTGTTTACGCAGACTGCCTAT
 GAGGAAGCAACGTGTGCCAGGCTCTGCCTGGGTGTGTGAGACAAAGACTAATCTGACAACAGAACAAA
 TAGCTAATATGTGGCAAGAAAATGTCACAGCCTGTTCCAGTGTGGCTATCTGCCAAAAGATATAGCAAT
 TCTGTGCAAGGAGGGGAGGACAGAGGACGCTATAGGCTTGCCTACTCAAGCAATGGAATTAATTGAG
 ACCCACAGACCATCAGAGGTTGTGTTTAGCCCGGCCACCGGTGTTTGGGAAGTCACATTGTTTTAGACA
 GTATTCAGCAATTTTCAAGCCTGGAGAGGACTGTCGTGTTTGGGCTTAGTCCAGAATGTGACCAGTCAGA
 GGAATTTTATAAGCTCTGCTTTGCTTCAAGAGCCATTAACACCTCTACCTGCTTATGAAAAGAGGGCA
 GCCTAC

ACGCGTACGCGGCCGCTCGAGCAGAACTCATCTCAGAAGAGGATCTGGCAGCAAATGATATCCTGGATT
 ACAAGGATGACGACGATAAAGTTTAA

Protein Sequence: >RC226257 representing NM_001129820
 Red=Cloning site Green=Tags(s)

MESLKTDTPEMPYPEVIVDVGRIIFGEENRKKMTNSCLKRSENSRIIRAICALLNSGGGVKAEIDDKTYS
 YQCHGLGQDLETSFQKLLPSGSQKYLDMQGGHNLIFVKSWSVDVSLPLRICSLRNL YRRDVTSAIN
 LSASSALELLREKGFRAQRGRPRVKKLHPQQVLNRCIQEEEDMRILASEFFKKDKLMYKEKLNFTSTHV
 EFKRFTTKKVIPIRIKEMLPHYVSFAFANTQGGYVLI GVDDKSKVEVVGCKWEKVNPDLLKKEIENCIKLP
 FHFCEKPKVNF TTKILNYYQKDVLDGYVCVIQVEPFCCVFAEAPDSWIMKDNSVTRLTAEQWVVMMLD
 TQSAPPSLVTDYNSCLISSASSARKSPGYPIKVHKFKEALQRHLFPVTQEEVQFPESLCKKLFSDHKEL
 EGLMKTLIHPCSQGI VIFSRWAGDVGRKEQNVLCDALLIAVNSPVVLYTILIDPNWPGGLE YARNTAH
 QLKQKLQTVGGYTGVKCIIPRLIHL SSTSQRPEIPLRYPRSYRLADEEEMEDLLQALVVVSLSSRLLS
 DQMGEFFNLLIMEQSLLSESLQKTRELF IYCFPGVRKTALAIKIMEKIKDLFHCKPKEILYVCEDSL
 KDFVTQQTTCQAVTRKTFMQGEFLKIKHIVMDETFNCSKYGNWYMKAKNI THPKAKGTGSENLHHGILW
 LFLDPFQIHHADV NGLPPPSAQFPRKTI TSGIHCALEIAKVMKEEMKRIKENPPSNMSPDTLALFSETAY
 EEATCAQALPGVCETKNTLTTEQIANYVARKCHSLFQCGYLPKDIAILCRRGEDRGRYRLALLKAMELIE
 THRPSEVVFSPATGVWGS HIVLDSIQFSGLERTVVFGLSPECQSEEFHKLCFASRAIKHLYLLYEKRA
 AY

TRTRPLEQKLISEEDLAANDILDYKDDDDKV

Chromatograms: https://cdn.origene.com/chromatograms/mk8103_f02.zip

Restriction Sites: SgfI-MluI

Cloning Scheme:

Cloning sites used for ORF Shuttling:



* The last codon before the Stop codon of the ORF

ACCN: NM_001129820

ORF Size: 2736 bp

OTI Disclaimer: Due to the inherent nature of this plasmid, standard methods to replicate additional amounts of DNA in E. coli are highly likely to result in mutations and/or rearrangements. Therefore, OriGene does not guarantee the capability to replicate this plasmid DNA. Additional amounts of DNA can be purchased from OriGene with batch-specific, full-sequence verification at a reduced cost. Please contact our customer care team at custsupport@origene.com or by calling 301.340.3188 option 3 for pricing and delivery.

The molecular sequence of this clone aligns with the gene accession number as a point of reference only. However, individual transcript sequences of the same gene can differ through naturally occurring variations (e.g. polymorphisms), each with its own valid existence. This clone is substantially in agreement with the reference, but a complete review of all prevailing variants is recommended prior to use. [More info](#)

OTI Annotation: This clone was engineered to express the complete ORF with an expression tag. Expression varies depending on the nature of the gene.

Components: The ORF clone is ion-exchange column purified and shipped in a 2D barcoded Matrix tube containing 10ug of transfection-ready, dried plasmid DNA (reconstitute with 100 ul of water).

Reconstitution Method:

1. Centrifuge at 5,000xg for 5min.
2. Carefully open the tube and add 100ul of sterile water to dissolve the DNA.
3. Close the tube and incubate for 10 minutes at room temperature.
4. Briefly vortex the tube and then do a quick spin (less than 5000xg) to concentrate the liquid at the bottom.
5. Store the suspended plasmid at -20°C. The DNA is stable for at least one year from date of shipping when stored at -20°C.

RefSeq: [NM_001129820.2](#)

RefSeq Size: 2882 bp

RefSeq ORF: 2739 bp

Locus ID: 342618

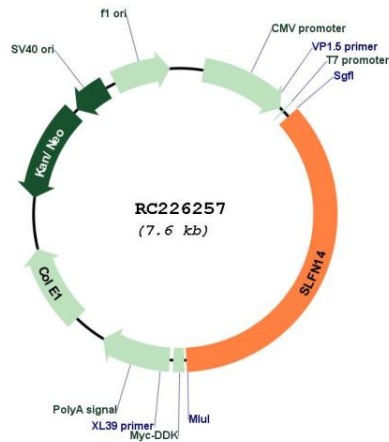
UniProt ID: [P0C7P3](#)

Cytogenetics: 17q12

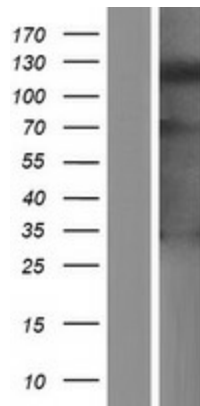
MW: 103.9 kDa

Gene Summary: The protein encoded by this gene plays an important role in platelet formation and function. Defects in this gene are a cause of thrombocytopenia with excessive bleeding. [provided by RefSeq, Jul 2016]

Product images:



Circular map for RC226257



Western blot validation of overexpression lysate (Cat# [LY427046]) using anti-DDK antibody (Cat# [TA50011-100]). Left: Cell lysates from untransfected HEK293T cells; Right: Cell lysates from HEK293T cells transfected with RC226257 using transfection reagent MegaTran 2.0 (Cat# [TT210002]).