

Product datasheet for **RC226256**

Metabotropic Glutamate Receptor 8 (GRM8) (NM_001127323) Human Tagged ORF Clone

Product data:

Product Type:	Expression Plasmids
Product Name:	Metabotropic Glutamate Receptor 8 (GRM8) (NM_001127323) Human Tagged ORF Clone
Tag:	Myc-DDK
Symbol:	Metabotropic Glutamate Receptor 8
Synonyms:	GLUR8; GPRC1H; mGlu8; MGLUR8
Mammalian Cell Selection:	Neomycin
Vector:	pCMV6-Entry (PS100001)
E. coli Selection:	Kanamycin (25 ug/mL)



[View online »](#)

ORF Nucleotide Sequence:

>RC226256 ORF sequence
 Red=Cloning site Blue=ORF Green=Tags(s)

TTTTGTAATACGACTCACTATAGGGCGGCCGGGAATTCGTCGACTGGATCCGGTACCGAGGAGATCTGCC
 GCC**CGGATCGCC**

ATGGTATGCGAGGGAAAGCGATCAGCCTCTTGCCCTTGTCTCTCTTACCGCCAAGTTCTACTGGA
 TCCTCACAAATGATGCAAAGAAGTACAGCCAGGAGTATGCCATTCCATACGGGTGGATGGGACATTAT
 TTTGGGGGTCTCTTCCCTGTCCACGAAAGGGAGAGAGAGGGGTGCCTTGTGGGAGCTGAAGAAGGAA
 AAGGGATTACAGACTGGAGGCCATGCTTTATGCAATTGACCAGATTAACAAGGACCCTGATCTCCTTT
 CCAACATCACTCTGGGTGCCGATCCTCGACAGTGTCTAGGGACACCTATGCTTTGGAGCAGTCTCT
 AACATTCGTGCAGGCATTAATAGAGAAAGATGCTTCGGATGTGAAGTGTGCTAATGGAGATCCACCCATT
 TTCACCAAGCCCACAAGATTTCTGGCGTCATAGGTGCTGCAGCAAGCTCCGTGCCATCATGGTTGCTA
 ACATTTAAAGACTTTTTAAGATACCTCAAATCAGCTATGCATCCACAGCCCCAGAGCTAAGTGATAACAC
 CAGGTATGACTTTTTCTCTCGAGTGGTTCGGCCTGACTCCTACCAAGCCCAAGCCATGGTGGACATCGTG
 ACAGCACTGGGATGGAATTATGTTTCGACACTGGCTTCTGAGGGGAACTATGGTGAGAGCGGTGTGGAGG
 CCTTACCCAGATCTCGAGGGAGATTGGTGGTGTTCATTGCTCAGTCACAGAAAATCCCACGTGAACC
 AAGACCTGGAGAAATTTGAAAAATTATCAAACGCCTGCTAGAAAACACCTAATGCTCGAGCAGTGATTATG
 TTTGCCAATGAGGATGACATCAGGAGGATATTGGAAGCAGCAAAAAAAGTAAACCAAGTGGGCATTTTC
 TCTGGATTGGCTCAGATAGTTGGGGATCCAAAATAGCACCTGTCTATCAGCAAGAGGAGATTGCAGAAGG
 GGCTGTGACAATTTGCCAAACGAGCATCAATTGATGGATTTGATCGATACTTTAGAAGCCGAAGTCTT
 GCCAATAATCGAAGAAATGTGTGGTTGCAGAATCTGGGAGGAGAATTTGGCTGCAAGTTAGGATCAC
 ATGGGAAAAGGAACAGTCATATAAAGAAATGCACAGGGCTGGAGCGAATTTGCTCGGGATTCATCTTATGA
 ACAGGAAGGAAAAGTCCAATTTGTAATTGATGCTGTATATCCATGGCTTACGCCCTGCACAATATGCAC
 AAAGATCTCTGCCTGGATACATTGGCCTTTGTCCACGAATGAGTACCATTGATGGGAAAGAGCTACTTG
 GTTATATTCGGGCTGTAATTTTAAATGGCAGTGTGGCACTCCTGTCACTTTTAAAGAAAACGGAGATGC
 TCCTGGACGTTATGATATCTTCCAGTATCAAATAACCAACAAAAGCACAGAGTACAAAGTCATCGGCCAC
 TGGACCAATCAGCTTATCTAAAAGTGGAAAGACATGCAGTGGGCTCATAGAGAACATACTCACCCGGCGT
 CTGTCTGCAGCCTGCCGTGAAGCCAGGGGAGAGGAAGAAAACGGTGAAAGGGTCCCTTGTCTGGCA
 CTGTGAACGCTGTGAAGTTACAACCTACCAGGTGGATGAGCTGTCTGTGAAGTTCCTCTGGATCAG
 AGACCAACATGAACCGCACAGGCTGCCAGCTTATCCCCATCATCAAATGGAGTGGCATTCTCCCTGGG
 CTGTGGTGCCTGTGTTTGTGCAATATTGGGAATCATCGCCACCACCTTTGTGATCGTGACCTTTGTCCG
 CTATAATGACACACCTATCGTGAGGGCTTCAGGACGCGAACTTAGTTACGTGCTCCTAACGGGGATTTTT
 CTCTGTTATTCAATCACGTTTTTAAATGATTGCAGCACCAGATACAATCATATGCTCCTTCCGACGGGTCT
 TCCTAGGACTTGGCATGTGTTTCAGCTATGCAGCCCTTCTGACCAAAAACAAACCGTATCCACCGAATATT
 TGAGCAGGGGAAGAAATCTGTCACAGCGCCCAAGTTCATTAGTCCAGCATCTCAGCTGGTGTACACCTTC
 AGCCTCATCTCCGTCCAGCTCCTTGGAGTGTGTGTCTGGTTTGTGTGGATCCCCCACATCATCATTG
 ACTATGGAGAGCAGCGGACACTAGATCCAGAGAAGGCCAGGGGAGTGTCAAGTGTGACATTTCTGATCT
 CTCACTCATTGTTCACCTGGATACAGTATCCTCTTGTGGTCACTTGTACTGTTTATGCCATTAACCG
 AGAGGTGTCCAGAGACTTTCAATGAAGCCAAACCTATTGGATTTACCATGTATACCACCTGCATCATT
 GGTTAGCTTTTATCCCCATCTTTTTTGGTACAGCCAGTCAGCAGAAAAGATGTACATCCAGACAACAAC
 ACTTACTGTCTCCATGAGTTAAGTGTTCAGTATCTCTGGCATGCTCTATATGCCAAGGTTTATATT
 ATAATTTTTATCCAGAACAGAAATGTTCAAAAACGCAAGAGGAGCTTCAAGGCTGTGGTACAGCTGCCA
 CCATGCAAAGCAAAGTATCCAAAAGGAAATGACAGACCAAATGGCGAGGTGAAAAGTGAAGTCTGTGA
 GAGTCTTGAACCAACACTTCTCTACCAAGACAACATATATCAGTTACAGCAATCATTTCAATC

ACGCGTACGCGGCCGCTCGAGCAGAAACTCATCTCAGAAGAGGATCTGGCAGCAAATGATATCTGGATT
 ACAAGGATGACGACGATAAGGTTTAA

Protein Sequence: >RC226256 protein sequence
 Red=Cloning site Green=Tags(s)

```

MVCEGKRSASPCFFLLTAKFYWILTMMQRTHSQEYAH SIRVDGDIILGGLFPVHAKGERGVPCGELKKE
KGIHRLEAMLYAIDQINKDPDLLSNITLGVRILDTC SRDTYALEQSLTFVQALIEK DASDVKANGDPPI
FTKPKDISGVIGAAASSVSIMVANILRLFKIPQISYASTAPELSDNTRYDFFSRVVPD SYQAQAMVDIV
TALGWNYVSTLASEGNYGESGVEAFTQISREIGGV CIAQSQKIPREPRGFEKIIKRLL ETPNARAVIM
FANEDDIRRILEAAKKNLQSGHFLWIGSDSWGSKIAPVYQEEIEGAVTILPKRASIDGFD RYFRSRTL
ANNRRNVWFAEFWEENFGCKLGSHGKRNSHIKCTGLER IARDSSYEQEGKVQFVIDAVYS MAYALHNMH
KDLCPGYIGLCPRMSTIDGKELLYIRAVNFNGSAGTPVTFNENG DAPGRYDIFQYQITNKST EYKVI GH
WTNQLHLKVEDMQWAHREHTHPASVCSLPCKPGERKKT VKGVPCCWHCERCEGNYQVDEL SC ELCPLDQ
RPNMNR TG CQLIPIIKLEWHSPWAVVPVFVAILGIIATTFVIVTFVRYNDTPIVRASGREL SYVLLTGIF
LCYSITFLMIAAPDTIICSFRRVFLGLGMCF SYAALLTKTNRIHRIFEQ GKSVTAPKFI SPASQLVITF
SLISVQLLGVFVWFVVDPPHIIIDYGEQRTL DPEKARGVLKCDISDLSLICSLGYSILLMVTCTVYAIKT
RGPVETFNEAKPIGFTMYTTCIIWLA FIPIFFGTAQSAEKMYIQTTTLTVSMLSASVSLGMLYMPKVYI
IIFHPEQNVQKRKR SFKAVVTAATMQSKLIQKGNDRPNGEVKSELCE SLETNTSSTKTTYISYNSHSI
  
```

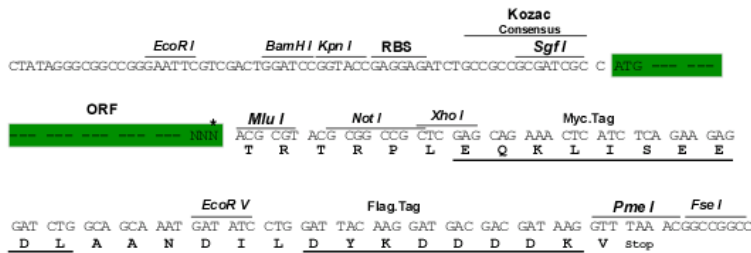
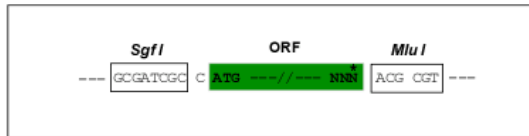
TRTRPLEQKLISEEDLAANDILDYKDDDDKV

Chromatograms: https://cdn.origene.com/chromatograms/mk6201_b12.zip

Restriction Sites: SgfI-MluI

Cloning Scheme:

Cloning sites used for ORF Shuttling:

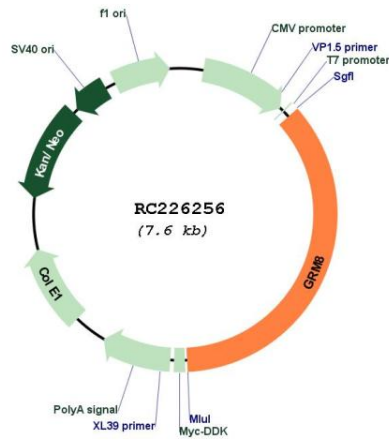


* The last codon before the Stop codon of the ORF

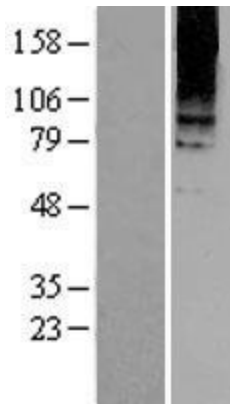
ACCN: NM_001127323

ORF Size:	2724 bp
OTI Disclaimer:	The molecular sequence of this clone aligns with the gene accession number as a point of reference only. However, individual transcript sequences of the same gene can differ through naturally occurring variations (e.g. polymorphisms), each with its own valid existence. This clone is substantially in agreement with the reference, but a complete review of all prevailing variants is recommended prior to use. More info
OTI Annotation:	This clone was engineered to express the complete ORF with an expression tag. Expression varies depending on the nature of the gene.
Components:	The ORF clone is ion-exchange column purified and shipped in a 2D barcoded Matrix tube containing 10ug of transfection-ready, dried plasmid DNA (reconstitute with 100 ul of water).
Reconstitution Method:	<ol style="list-style-type: none">1. Centrifuge at 5,000xg for 5min.2. Carefully open the tube and add 100ul of sterile water to dissolve the DNA.3. Close the tube and incubate for 10 minutes at room temperature.4. Briefly vortex the tube and then do a quick spin (less than 5000xg) to concentrate the liquid at the bottom.5. Store the suspended plasmid at -20°C. The DNA is stable for at least one year from date of shipping when stored at -20°C.
RefSeq:	NM_001127323.1 , NP_001120795.1
RefSeq Size:	3873 bp
RefSeq ORF:	2727 bp
Locus ID:	2918
UniProt ID:	O00222
Cytogenetics:	7q31.33
Protein Families:	Druggable Genome, GPCR, Transmembrane
Protein Pathways:	Neuroactive ligand-receptor interaction
MW:	101.7 kDa
Gene Summary:	L-glutamate is the major excitatory neurotransmitter in the central nervous system and activates both ionotropic and metabotropic glutamate receptors. Glutamatergic neurotransmission is involved in most aspects of normal brain function and can be perturbed in many neuropathologic conditions. The metabotropic glutamate receptors are a family of G protein-coupled receptors, that have been divided into 3 groups on the basis of sequence homology, putative signal transduction mechanisms, and pharmacologic properties. Group I includes GRM1 and GRM5 and these receptors have been shown to activate phospholipase C. Group II includes GRM2 and GRM3 while Group III includes GRM4, GRM6, GRM7 and GRM8. Group II and III receptors are linked to the inhibition of the cyclic AMP cascade but differ in their agonist selectivities. Alternatively spliced transcript variants encoding different isoforms have been described for this gene. [provided by RefSeq, Jul 2008]

Product images:



Circular map for RC226256



Western blot validation of overexpression lysate (Cat# [LY426746]) using anti-DDK antibody (Cat# [TA50011-100]). Left: Cell lysates from untransfected HEK293T cells; Right: Cell lysates from HEK293T cells transfected with RC226256 using transfection reagent MegaTran 2.0 (Cat# [TT210002]).