

Product datasheet for RC226245

PRRT4 (NM_001114726) Human Tagged ORF Clone

Product data:

Product Type:	Expression Plasmids
Product Name:	PRRT4 (NM_001114726) Human Tagged ORF Clone
Tag:	Myc-DDK
Symbol:	PRRT4
Mammalian Cell Selection:	Neomycin
Vector:	pCMV6-Entry (PS100001)
E. coli Selection:	Kanamycin (25 ug/mL)
ORF Nucleotide Sequence:	>RC226245 representing NM_001114726 Red=Cloning site Blue=ORF Green=Tags(s)

TTTTGTAATACGACTCACTATAGGGCGGCCGGAATTCGTCGACTGGATCCGGTACCGAGGAGATCTGCC
GCCCGATCGCC

ATGGCCAGGCATGGCTGTCTAGGGCTGGGACTGTTCTGCTGCGTCCTGTTTGGCTGCTACTGTGGCCCCC
AGCCCACCCCTCCATCCCAGGTGCCCTGCCACCACTTTGACCCCGTACCTCAAAGTGAGGCCTCTAT
GCTGTCTCTCAACCTGGGACTTAACTTCAAATTCATCTTCGGGGACCTGCTGCTGTCTGGGGGAGCCCA
GTCACAGAGACCCAGCCACTCTCTTTGGGCCAGGCCAGGAGCCAGGGGAAGAGGTGGCCAGTGGGCTGA
GACTGACCCCTTTGGGAATTGCTGGTGGCTCCTCAGGGAACCTCTCACTGAGTGGGCTCCACCGA
AGGTGGCTCAAAGCCCCGGGCCTCCTCCCTGCTTCCGGAGTCCACATCCCAGGCGCTCTGGGCCAGCGAT
GGGCCACTGCCCCATCAGCCAGGAGGAGCACTGTGACCTGGGACACTGCTCTGATGGTGACAGCAC
TTCCATCCAGTGCTCCCAGGCCACCAGAGCGAGCTGGAGCTGAAGTTTGACATGGCACTGAGAGCAGG
TGCAGCCCCACGCTTGGGCATCGAACGCTGCCCTGCTGCCAGCCTGCGGGCCAGCCTGGCAGAGATT
GCTGGGCGCTGGGACCTTTGGATTCTTTGGCACTACTCTGTCCCCTCCGGAACCTCTCCGGCCTGA
GCCCCCAGGTGAACTACATCCACAAGCTCTGCCTCTGGAGTTTCGGGTCTCTGGGGTCTCTGGTAC
CACTCTGTCCCTGCCCCATACTCCCTGGAGAGGAAGCTCTCCAGCCCAAGTCTCTGGACCCAGCTGCT
TCCCTAAGTTTTGCCTCGATTGCAACAACATCATTAGACCCACAGTCCCATCTCTGGCCAGATGACC
TCTCTCTCCCGCCAGCCTCGGGAACCTTCGGGGCAGCCAGAGTGTGGGCCAGGGTCTGCAGCGTGGG
AGAATTGCCTGAACGCGAGGGGAGCCTCCCGAGGCGCCGAGGCCCTCTTTTTCTGACCTGGAGGCC
GACTGGGCAGAGGCCAGGGCTCGCTGGGGGCTGGCCTGGGAGGCCACGTGTACGGGCGATTACACCGTG
GACTTCCGCCCGCCCTCCCAATCAACCTGCGACGCAGCATCGAGGAGGCCCTCTGCAGCGAGGCCCTGC
TTGCGCTGGCCTCTCCAGGGCCCTGCCTTCGAGGACGCTCTGCCTGGGCTCGGACTCTACCGCACCGC
CTCGCTGGGGACCGGGGGCAGGGCCAG

ACGCGTACGCGGCCGCTCGAGCAGAACTCATCTCAGAAGAGGATCTGGCAGCAAATGATATCTGGATT
ACAAGGATGACGACGATAAGGTTTAA



[View online »](#)

Protein Sequence: >RC226245 representing NM_001114726
Red=Cloning site Green=Tags(s)

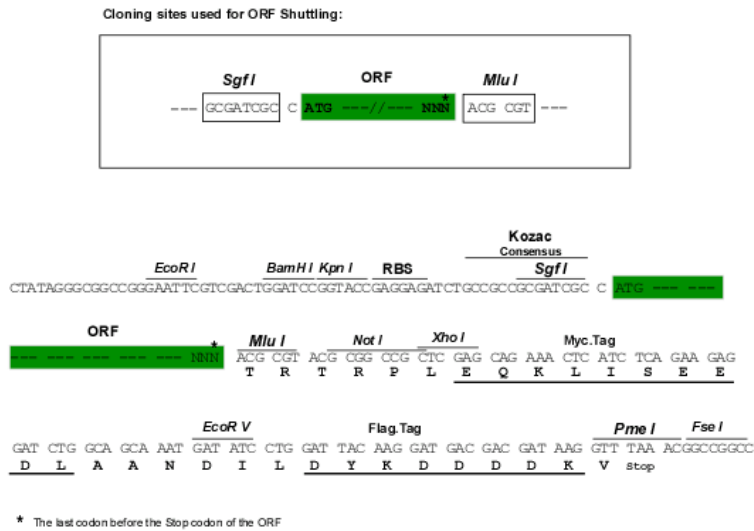
MARHGCLGLGLFCCVLF AATVGPQPTPSIPGAPATTLTPVPQSEASMLSLNLGLNFKFHLRGPAAVWGSP
 VTETQPLSLGPGQEPGEEVASGLRTDPLWELLVGSSGNSLTEWGSTEKSKPRASSLLPESTRRRSGPSD
 GPTAPYQPRRSTVTWDTALMVTALPSSAPRPHQSELELKFDMALRAGAAPT LGHRTLPLPSLRASLAEI
 AGRLGPF GFFGTTL SPLRNFSGLSPPGETTSTSSASGVSGSLGFLGTTLSLPPYSLERKLSPPSPLDPAA
 SLSFASIATSLDPTVPI SGPDDLSPASLGNPSGQPECGPGSCSVGELPEREQPPEAPRPLFFLTLEA
 DWAEARARWGLAWEAHVYGR LHRGLP PALNPATQHRGGPLQRGPACAWPLPGPCLRGRSAWARTLPHR
 LAGDRGGQ

TRTRPLEQKLISEEDLAANDILDYKDDDDKV

Chromatograms: https://cdn.origene.com/chromatograms/mk8034_d11.zip

Restriction Sites: SgfI-MluI

Cloning Scheme:



ACCN: NM_001114726

ORF Size: 1235 bp

OTI Disclaimer: The molecular sequence of this clone aligns with the gene accession number as a point of reference only. However, individual transcript sequences of the same gene can differ through naturally occurring variations (e.g. polymorphisms), each with its own valid existence. This clone is substantially in agreement with the reference, but a complete review of all prevailing variants is recommended prior to use. [More info](#)

OTI Annotation: This clone was engineered to express the complete ORF with an expression tag. Expression varies depending on the nature of the gene.

Components: The ORF clone is ion-exchange column purified and shipped in a 2D barcoded Matrix tube containing 10ug of transfection-ready, dried plasmid DNA (reconstitute with 100 ul of water).

Reconstitution Method:

1. Centrifuge at 5,000xg for 5min.
2. Carefully open the tube and add 100ul of sterile water to dissolve the DNA.
3. Close the tube and incubate for 10 minutes at room temperature.
4. Briefly vortex the tube and then do a quick spin (less than 5000xg) to concentrate the liquid at the bottom.
5. Store the suspended plasmid at -20°C. The DNA is stable for at least one year from date of shipping when stored at -20°C.

RefSeq: [NM_001114726.3](#)

RefSeq ORF: 1290 bp

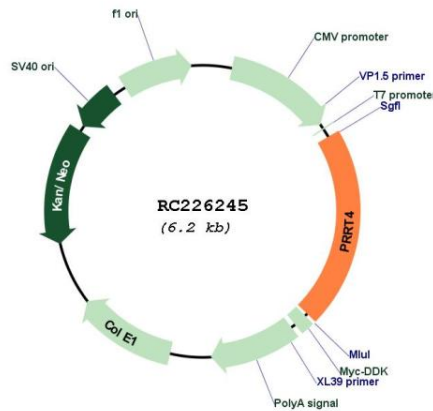
Locus ID: 401399

UniProt ID: [C9JH25](#)

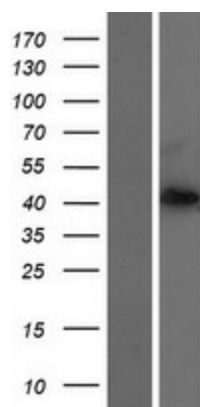
Cytogenetics: 7q32.1

MW: 44.4 kDa

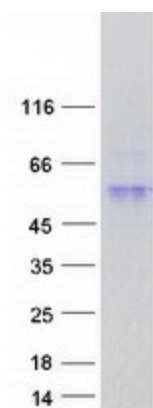
Product images:



Circular map for RC226245



Western blot validation of overexpression lysate (Cat# [LY426504]) using anti-DDK antibody (Cat# [TA50011-100]). Left: Cell lysates from untransfected HEK293T cells; Right: Cell lysates from HEK293T cells transfected with RC226245 using transfection reagent MegaTran 2.0 (Cat# [TT210002]).



Coomassie blue staining of purified PRRT4 protein (Cat# [TP326245]). The protein was produced from HEK293T cells transfected with PRRT4 cDNA clone (Cat# RC226245) using MegaTran 2.0 (Cat# [TT210002]).