

Product datasheet for **RC226241**

CTNNA3 (NM_001127384) Human Tagged ORF Clone

Product data:

Product Type:	Expression Plasmids
Product Name:	CTNNA3 (NM_001127384) Human Tagged ORF Clone
Tag:	Myc-DDK
Symbol:	CTNNA3
Synonyms:	ARVD13; VR22
Mammalian Cell Selection:	Neomycin
Vector:	pCMV6-Entry (PS100001)
E. coli Selection:	Kanamycin (25 ug/mL)



[View online »](#)

**ORF Nucleotide
Sequence:**

>RC226241 representing NM_001127384
 Red=Cloning site Blue=ORF Green=Tags(s)

TTTTGTAATACGACTCACTATAGGGCGGCCGGGAATTCGTCGACTGGATCCGGTACCGAGGAGATCTGCC
 GCC**CGGATCGCC**

ATGTCAGCTGAAACACCAATCACATTGAATATCGATCCTCAGGATCTGCAGGTCCAAACATTACCGTGG
 AGAAGCTACTGGAGCCTCTCATAATCCAGGTTACCACACTTGAAACTGTCCCAGAACCCCTCCAGCAG
 GAAAAAAGGACGTTGCAAAAAGAGCCAGTGTCTTCTAGCTTCTGTGGAGGAAGCAACTTGAATTTATTA
 GACAAGGGAGAGAAGATTGCCAGGAAGCTACAGTTTTAAAGGATGAGCTTACGGCTTCACTTGAGGAAG
 TTCGCAAGAAAGTGAAGCTCTGAAAGTACAGCTGAGAGATTTACAGATGACCCCTGTTTTCTCCAAA
 AAGGGAGGCTGTGGTTCAAGCTGCCCGTGCCTTGCTGGCTGCGGTGACGAGACTCCTTATCCTTGCGGAC
 ATGATTGATGTCATGTGCCTCTTGCAACATGTGTAGCTTTTCAAAGGACATTTGAGTCTCTCAAAAATG
 TTGCCAACAAATCTGACCTCCAGAAAACCTACCAGAAGCTTGGGAAGGAGCTGGAAAATTTGGATTATTT
 AGCCTTCAAACGTGAGCAGGACTTAAAACTCCAATCAGAGAGATGAAATTGCAGAGCCCGAGCTTCA
 CTGAAGGAGAAGCTCTCCCTCTTGCAATCAATTTGTTTCAGCTTGTGGAGCATTCTGATGTTGCTTCCC
 TCAAAGCAAGCAAGGACACAGTTTGTGAAGAAATTCAGAATGCTCTCAATGTAATTTCAAATGCTTCA
 AGGGATCCAGAATATGACAACCCACCAGAACCTCAGGCAGCAACCCTGGGAAGTGCCCTTGATGAGCTG
 GAGAATTTAATGTCCTGAATCCACTCACAGTAACTGAGGAGGAAATACGACCATCACTAGAGAAACGCC
 TTGAAGCCATTATCAGTGGGGCTGCTCTGCTGGCGGATTTCTCATGTACGAGGGACTTACACCGAGAGCG
 GATTATCGCAGAATGCAACGCCATTGCGCCAGGCTCTTTCAGGATCTGCTTTCAGAGTACATGAACAACGCT
 GGAAAAAAGAAAGGAGTAAACCTGAATATTGCTTTAGACAACATGTGAAGAAGACAAGAGACCTTC
 GCAGACAGCTCCGCAAGGCTATTATAGATCATGTGTGACTCTTTCCTGGATACGACACTCCCTTTTT
 GGTTCTCATTGAAGCTGCTAAGAATGGCCGGGAAAAGGAAATAAAAGAATATGCTGCGATATTTTCATGAA
 CACACCAGCAGGCTTGTAGAGGTGGCAATCTTGCTTGTTCATGTCAACAAATGAAGATGGAATTTAAAA
 TTGTCAAATTCAGCCAATCATTTGGAACCTTGCTGTCACAGATTATTAATGCTGCACTTGCTTTGGC
 TGCAAGACCCAAAAGTCAAGCGGTCAAAAACCATGGAATGTACAAGCGTACATGGGAGAATCATATA
 CATGTCCTCACTGAAGCCGTAGATGACATTACAAGCATTGATGACTTCTTGCTGTATCTGAAAGCCATA
 TCTTGGAAAGATGCAACAAGTGTATCATAGCCTTAAGAGACCAGGATGCTGATAATTTAGACCGTGTGC
 GGGTGTATCAGAGGCCGGCAGCAAGAGTTGCTCACATCGTACGGGTGAAATGGACAGTTACGAGCCA
 GGGGCTTACACGGAAGGTGTAATGAGAAATGTTAACTTCTTACAAGTACTGTAATTCCTGAATTTGTAA
 CACAAGTGAATGTTGCCTTGGAAAGCTTAAAGCAAAAGCTATTGAATGTGTTGGATGATAATCAATTTGT
 GGACATCTCAAAGAAGATCTATGATACAATTCATGATATCAGATGTTTCAGTCATGATGATTCCGGACCCCA
 GAGGAAGTGGAGGATGTTTCTGACCTTGAAGAGGAACACGAGGTCCGCAGTACACACCAGCATTACAGACCG
 AAGGGAAAAGTGAAGGGCTAAGATGACTCAACTGCCTGAGGCAGAAAAAGAAAGATTGCTGAGCAAGT
 TGCTGATTTCAAGAAAGTAAAGAGTAAGCTGGATGCTGAGATTGAGATATGGGATGATACAAGCAACGAC
 ATCATTGTTCTGGCCAAGAACATGTGTATGATCATGATGGAGATGACAGACTTCACTAGGGGCAAGGAC
 CACTAAAGCATACAACTGATGTGATCTATGCAGCGAAAATGATATCAGAATCAGGATCAAGGATGGATGT
 CCTTGCTCGGCAGATTGCTAATCAGTCCCAGATCCATCTTGTAAACAGGACTTGTGGCTACCTGGAA
 CAGATTAAGTTCTACTCCCAACTGAAAATCTGCAGTCAAGTTAAAGCTGAGATCCAGAACCTGGGAG
 GAGAGCTCATCATGTGAGCTTTGGACAGTGTACATCCCTGATCCAAGCAGCCAAAAATTTAATGAATGC
 TGTAGTGCAACAGTGAATGTCTTACATTGCCTCAACCAAGATCATCCGAATCCAGAGTCTGCTGGG
 CCCCAGCACCCAGTTGTGATGTGGAGAATGAAGGCTCCTGCAAAAAAACCTTGATTAAGAGAGAGAAGC
 CAGAGGAAACGTGTGAGCTGTGAGCAGGCTCAGCAAGAAAAAATCCATCCATTGCAAGTCATGAG
 TGAATTTAGAGGAAGACAAATCTAC

ACGCGTACGCGGCCGCTCGAGCAGAAACTCATCTCAGAAGAGGATCTGGCAGCAATGATATCCTGGATT
 ACAAGGATGACGACGATAAGGTTTAA

Protein Sequence: >RC226241 representing NM_001127384
 Red=Cloning site Green=Tags(s)

MSAETPITLNIIDPQDLQVQFTTVEKLLLEPLIIQVTTLVNCPQNPSSRKKGRSKRASVLLASVEEATWNLL
 DKGEKIAQEATVLKDEL TASLEEVKSEALKVSAERFTDDPCFLPKREAVVQAARALLAAVTRLLILAD
 MIDVMCLLQHVSAFQRTFESLKNVANKSDLQKTYQKLGKELNLDYLAFKRQDQLKSPNQRDEIAGARAS
 LKENSPLLLHSICSACLEHSDVASLKASKDTCVCEEIQNALNVISNASQGIQNMTPPEPQAATLGSALDEL
 ENLIVLNPLTVTEEEIRPSLEKRLEAIIISGAALLADSSCTRDLHRERIIAECNAIRQALQDLLSEYMNNA
 GKKERSNTLNIALDNMCKKTRDLRRLRKAIDHVSDFSFLDTTVPLLVLIEAAKNGREKEIKEYAAIFHE
 HTSRLVEVANLACSMSTNEDGIKIVKIAANHLETLPQIINAALAAARPKSQAVKNTMEMYKRTWENHI
 HVLTEAVDDITSIDDFLAVSESHILEDVNKCIIALRDQDADNLDRAAGAIRGRAARVAHIVTGEMDSYEP
 GAYTEGVMRNVNFLTSTVIPEFVTQVNVALEALSKSSLNVLDDNQFVDISKKIYDTIHDIRCSVMMIRTP
 EELEDVSDLEEEHEVRSHTSIQTEGKTDRAKMTQLPEAEKEKIAEQVADFVKVSKLDAEIEIWDDTSND
 IIVLAKNMCIMMEMTDFTRGKGPLKHTTDVIYAAKMISESGSRMDVLRQIANQCPDPSCKQDLLAYLE
 QIKFYSHQLKICSQVKAIEQNLGGELIMSALDSVTSLIQAAKNLMNAVQTVKMSYIASTKIIRIQSPAG
 PRHPVVMWRMKAPAKKPLIKREKPEETCAAVRRGSAKKKIHPLQVMSEFRGRQIY

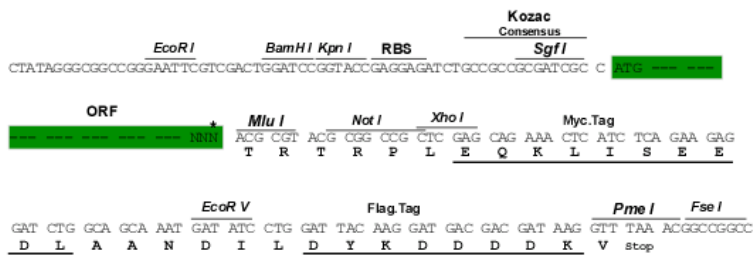
TRTRPLEQKLISEEDLAANDILDYKDDDDKV

Chromatograms: https://cdn.origene.com/chromatograms/mk6676_b10.zip

Restriction Sites: SgfI-MluI

Cloning Scheme:

Cloning sites used for ORF Shuttling:

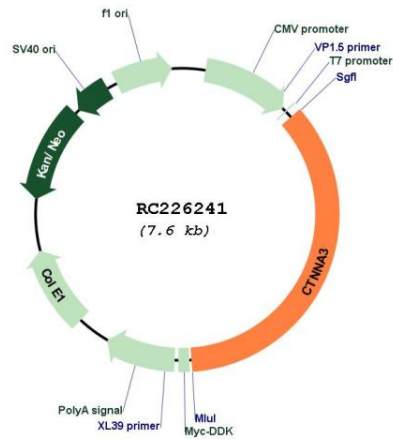


* The last codon before the Stop codon of the ORF

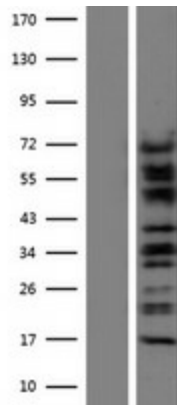
ACCN: NM_001127384

ORF Size:	2685 bp
OTI Disclaimer:	The molecular sequence of this clone aligns with the gene accession number as a point of reference only. However, individual transcript sequences of the same gene can differ through naturally occurring variations (e.g. polymorphisms), each with its own valid existence. This clone is substantially in agreement with the reference, but a complete review of all prevailing variants is recommended prior to use. More info
OTI Annotation:	This clone was engineered to express the complete ORF with an expression tag. Expression varies depending on the nature of the gene.
Components:	The ORF clone is ion-exchange column purified and shipped in a 2D barcoded Matrix tube containing 10ug of transfection-ready, dried plasmid DNA (reconstitute with 100 ul of water).
Reconstitution Method:	<ol style="list-style-type: none">1. Centrifuge at 5,000xg for 5min.2. Carefully open the tube and add 100ul of sterile water to dissolve the DNA.3. Close the tube and incubate for 10 minutes at room temperature.4. Briefly vortex the tube and then do a quick spin (less than 5000xg) to concentrate the liquid at the bottom.5. Store the suspended plasmid at -20°C. The DNA is stable for at least one year from date of shipping when stored at -20°C.
RefSeq:	NM_001127384.2 , NP_001120856.1
RefSeq ORF:	2688 bp
Locus ID:	29119
UniProt ID:	Q9UI47
Cytogenetics:	10q21.3
Protein Pathways:	Adherens junction, Arrhythmogenic right ventricular cardiomyopathy (ARVC), Endometrial cancer, Leukocyte transendothelial migration, Pathways in cancer, Tight junction
MW:	99.6 kDa
Gene Summary:	This gene encodes a protein that belongs to the vinculin/alpha-catenin family. The encoded protein plays a role in cell-cell adhesion in muscle cells. Mutations in this gene are associated with arrhythmogenic right ventricular dysplasia, familial 13. Alternative splicing results in multiple transcript variants. [provided by RefSeq, Mar 2014]

Product images:



Circular map for RC226241



Western blot validation of overexpression lysate (Cat# [LY426767]) using anti-DDK antibody (Cat# [TA50011-100]). Left: Cell lysates from untransfected HEK293T cells; Right: Cell lysates from HEK293T cells transfected with RC226241 using transfection reagent MegaTran 2.0 (Cat# [TT210002]).