

Product datasheet for **RC226224**

ZBTB10 (NM_001105539) Human Tagged ORF Clone

Product data:

Product Type:	Expression Plasmids
Product Name:	ZBTB10 (NM_001105539) Human Tagged ORF Clone
Tag:	Myc-DDK
Symbol:	ZBTB10
Synonyms:	RINZF
Mammalian Cell Selection:	Neomycin
Vector:	pCMV6-Entry (PS100001)
E. coli Selection:	Kanamycin (25 ug/mL)



[View online »](#)

ORF Nucleotide Sequence:

>RC226224 representing NM_001105539
 Red=Cloning site Blue=ORF Green=Tags(s)

TTTTGTAATACGACTCACTATAGGGCGGCCGGGAATTCGTCGACTGGATCCGGTACCGAGGAGATCTGCC
 GCC**CGCATCGCC**

ATGTCGTTCAAGTAAATGAACCGCAGGACGCTGGCGTTCCGAGGAGCGGGTTGGTCACCGCTAGCGGCG
 GCGGCTCCACGAACAATAACGCTGGCGGGGAGGCTCAGCTTGGCTCCGAGCCCCAGCCGAGACAGCC
 CCCGCCGCCAGCGCCGCCCGCGCTTACGCCCTAATGGCGGGGGCCGACGAGGAAGTGAATTGGAG
 GGCTGGAGCCCCAAGACCTGGAGGCTCCGCCGGCCGGCCGCCGGCGCCGAGGAAGCAAGGAGT
 TGCTGCTCCCCAAGACGCGGGCGGCCACCTCGCTTGGCGGTGGCGGGGGGGCCCCCTGCTAGCGGA
 AAGGAACCGTCGGACTCTGGCTTCCGAGGCGGCGGGCGGGGGTCTCGGAACAATGGCAGTAGCCGC
 GGCCGCCCGAGACCTCGGTGTGCCCTTGAGGCATTTCAATGGCGAGGGCCGGCGACTGTGGATCTGG
 AGCTGGACGCGCTGGAGGGAAGGAGTTGATGCAGGACGGCGCTCCCTGAGCGACAGCACCGAGGACGA
 GGAGGAGGGGGCAGCCTGGGCGACGGCAGCGGGCGGAAGGCGGCAGCTGCAGCAGCAGCAGCGGTCG
 GGCGGCGATGGCGGGGACGAAGTGGAGGGCAGCGGTGTGGGAGCTGGCGAAGGAGAGACTGTCCAGCACT
 TCCCGCTCGCGCGGCCAAGTCTCTAATGCAGAAGCTCCAATGCTCCTCCAGACCTCCTGGCTCAAGGA
 CTTTCCCTGGCTGCGCTATTCGAAGTACTGGTCTTATGCTTTCGCGGCTGGTGCAAAAGACCCCTGCA
 GATGGGGGAAGCGTGGACCTTCCCCAGTGGGGCATGATGAGCTTTCGCGAGGGACCCGCAACTACAAGA
 AAACCTCCTCCTGAGGCACCACGTCTACCGAGCACAACTCCACGAAGCCAACGCCAGGAGTCAAGA
 AATACCATCAGAGGAGGGTACTGTGACTTTAATAGTAGGCCAAATGAGAATCTTATTGCTATCAACT
 CTGCGCAACTAAATGAACAGAGAAAGAAAGTATTCTTTGTGATGTCAGCATTGTGGTAAGCGAAAAA
 TCTTCAAAGCTCATAAAGAACCTCTGGTTCAGCGACCGTTTCTTTAAGACTTTATATTGCTTTTCAA
 CAAAGAAAGCCCTAACCAAAAACAATACTACCCACTTAGATATTGCTGCAGTTCAAGGTTTTTCAGTCATC
 TTGGACTTCTTGTATTCTGGTAACCTGGTCTCAAGCCAAAATGCCATTGAAGTTATGACCGTGCCCA
 GCTATCTTCAAATGAGTGAAGTTGTTCAAACCTGCCGAAATTTCAATAAGATGCCTTAAATATAAGCAT
 TAAATCAGAAGCTCCAGAGTCTGTAGTTGTGGACTATAAATAGAAAACCAGTTAATAGAGATGGTCTG
 TCTTCATCAGGGATCAAAAAATGGCCAGTTTTGGGCAACACGGAACTTACCAATTTGGCAAGTAATG
 TAAAGATTGAAAATGATGGTTGTAATGTCGACGAGGGCCAAATAGAAAACCTACCAATGAATGACAGTAG
 TTGGGTCCAGGATGGATCTCCTGAAATGGCTGAAAATGAATCTGAAGTCAAACAAAAGTGTATTATTGG
 AATAATATGGGCTCCAGGGAATTAAGAGACTGGCAAAACAAGGAGGAAAAACCAACTACAAAAGAT
 TTATTTATAATATCCACCTAATAATGAAACGAATTTAGAAGATTGCTCAGTAATGCAGCCACCTGTTGC
 CTATCCAGAAGAAAATACACTACTCATCAAGGAAGAACCAGATTTAGATGGTGTCTACTCTCGGGGCCA
 GATGGTGTAGGAATGTGAATGCAAATTTATTGGCTGAAGCTGGCACTAGTCAAGATGGAGGTGATGCTG
 GTACTTCACATGATTTCAAGTATGGTTTGTGCTGCTGGTCTTCAAATGATTTCAAGTATGGATTGATACC
 AGGTACTTCAAATGATTTCAAGTATGGATTGATACCAGGTGCTTCAAATGATTTCAAGTATGGATTATTG
 CCAGAATCTTGGCCAAAACAAGAAACCTGGGAAAATGGTGAATCATCTCTAATCATGAACAAGTTAAAT
 GCCCTCATTGTAGCTATGTAGCCAAATACAGACGAACACTAAAAAGGCACTTGCTCATTACACAGGAGT
 GAGATCATTTAGCTGTGATATTTGTGAAAACCTGTTACTCGAAGAGAACATGAAAAAGACATTTCCCTG
 GTGCATAAAAAGGATAAAAAATACAAATGTATGGTGTGTAAGAAGATCTCATGTTAGCAGCCAGTGTG
 GAATAAGACATGGATCTCGACGTTATGGTGTGTTGTGACTGTGCAGATAAATCACAGCCAGGAGGGCA
 AGAAGGTGTAGATCAGGGACAGGATACAGAATTCCTCGGGATGAAGAATACGAGGAGAATGAAGTAGGA
 GAAGCTGATGAAGAGCTAGTTGATGATGGAGAAGATCAGAATGATCCCTCTCGATGGGATGAATCAGGAG
 AAGTTTGTATGTCTTAGATGAT

ACGCGTACGCGGCCGCTCGAGCAGAACTCATCTCAGAAGAGGATCTGGCAGCAAATGATATCCTGGATT
 ACAAGGATGACGACGATAAGGTTTAA

Protein Sequence: >RC226224 representing NM_001105539
 Red=Cloning site Green=Tags(s)

```

MSFSEMNRRTLAFRGGGLVTASGGGSTNNAGGEASAWPPQPQPRQPPPPAPPALQPPNGRGADEEVELE
GLEPQDLEASAGPAAGAAEEAKELLLPQDAGGPTSLGGGAGGPLLAERNRRTLAFRGGGGGLGNGGSSR
GRPETSVMPLRHFNGRGPATVDLELDALEGKELMQDGLSDSTEDEEEGASLDGSGAEGGSCSSRRS
GGDGGDEVEGSGVGAGEGETVQHFPLARPKSLMQKLQCSFQTSWLKDFPWLRYSKDTGLMSCGWQKTPA
DGGSDVLPVGHDEL SRGTRNYKKTLLLRHHVSTEHKLHEANAQSEIPSEEGYCDFNSRPNENSYCYQL
LRQLNEQRKKGILCDVSIYVSGKIFKAHKNILVAGSRFFKTL YCF SNKESPNQNNTTHLDIAAVQGF SVI
LDFLYSGNLVLT SQNAIEVMTVASYLQMSEVVQTCRNF IKDALNISI KSEAPESVVDYNNRKPVN RDGL
SSSRDQKIASFWATRNL TNLASNVKIENDGCNVDEGQIENYQMNDS SWVQDGSPEMAENESE GQTKVFIW
NNMGSQGIQETGKTRRNQTTKRFIYNI PPNETNLEDCSVMQPPVAYPEENTLLIKEEPDLGALLSGP
DGDRNVNANLLAEAGTSQDGDAGTSHDFKYGLMPGPSNDFKYGLIPGTSNDFKYGLIPGASNDFKYGLL
PESWPQKETWENGESSLIMNKLKCPHCSYVAKYRRTLKRHLLIHTGVRSFSCDICGKLFTRREHVKRHSL
VHKKDKKYKCMVCKKIFMLAASVGI RHGSRRYGVCVDCADKSQPGGQEGVDQGDTEFPRDEEYEENEV G
EADEELVDDGEDQNDPSRWDESGEVCM SLDD
  
```

TRTRPLEQKLISEEDLAANDILDYKDDDDKV

Restriction Sites:

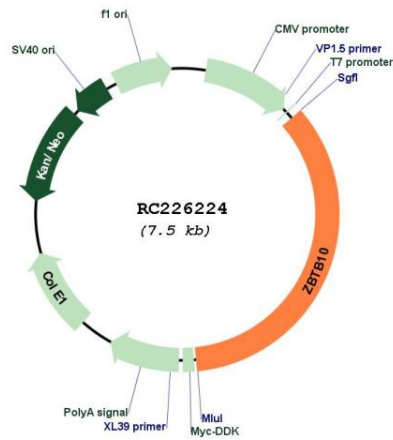
SgfI-MluI

Cloning Scheme:

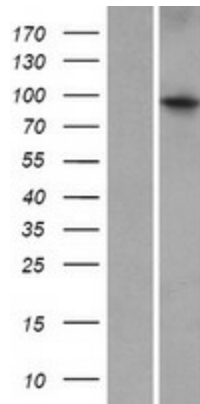


ACCN:	NM_001105539
ORF Size:	2613 bp
OTI Disclaimer:	The molecular sequence of this clone aligns with the gene accession number as a point of reference only. However, individual transcript sequences of the same gene can differ through naturally occurring variations (e.g. polymorphisms), each with its own valid existence. This clone is substantially in agreement with the reference, but a complete review of all prevailing variants is recommended prior to use. More info
OTI Annotation:	This clone was engineered to express the complete ORF with an expression tag. Expression varies depending on the nature of the gene.
Components:	The ORF clone is ion-exchange column purified and shipped in a 2D barcoded Matrix tube containing 10ug of transfection-ready, dried plasmid DNA (reconstitute with 100 ul of water).
Reconstitution Method:	<ol style="list-style-type: none">1. Centrifuge at 5,000xg for 5min.2. Carefully open the tube and add 100ul of sterile water to dissolve the DNA.3. Close the tube and incubate for 10 minutes at room temperature.4. Briefly vortex the tube and then do a quick spin (less than 5000xg) to concentrate the liquid at the bottom.5. Store the suspended plasmid at -20°C. The DNA is stable for at least one year from date of shipping when stored at -20°C.
RefSeq:	NM_001105539.3
RefSeq ORF:	2616 bp
Locus ID:	65986
UniProt ID:	Q96DT7
Cytogenetics:	8q21.13
Protein Families:	Transcription Factors
MW:	94.7 kDa
Gene Summary:	May be involved in transcriptional regulation.[UniProtKB/Swiss-Prot Function]

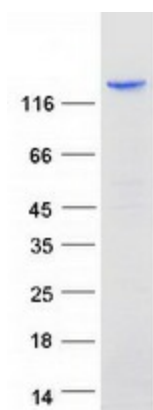
Product images:



Circular map for RC226224



Western blot validation of overexpression lysate (Cat# [LY426258]) using anti-DDK antibody (Cat# [TA50011-100]). Left: Cell lysates from untransfected HEK293T cells; Right: Cell lysates from HEK293T cells transfected with RC226224 using transfection reagent MegaTran 2.0 (Cat# [TT210002]).



Coomassie blue staining of purified ZBTB10 protein (Cat# [TP326224]). The protein was produced from HEK293T cells transfected with ZBTB10 cDNA clone (Cat# RC226224) using MegaTran 2.0 (Cat# [TT210002]).