

Product datasheet for **RC226203**

FSTL5 (NM_001128428) Human Tagged ORF Clone

Product data:

Product Type:	Expression Plasmids
Product Name:	FSTL5 (NM_001128428) Human Tagged ORF Clone
Tag:	Myc-DDK
Symbol:	FSTL5
Mammalian Cell Selection:	Neomycin
Vector:	pCMV6-Entry (PS100001)
E. coli Selection:	Kanamycin (25 ug/mL)



[View online »](#)

ORF Nucleotide Sequence:

>RC226203 representing NM_001128428
 Red=Cloning site Blue=ORF Green=Tags(s)

TTTTGTAATACGACTCACTATAGGGCGGCCGGAATTCGTCGACTGGATCCGGTACCGAGGAGATCTGCC
 GCC**CGCATCGCC**

ATGTTTAAGTGCTGGTCAGTTGTCTTGGTTCTCGATTCATTTTCTGGAGTCGGAAGGAAGGCCAACCA
 AAGAAGGAGGATATGGCCTTAAATCCTATCAGCCTCTAATGAGATTGCGACATAAGGAAAAAATCAAGA
 AAGTTCAAGAGTCAAAGATTTATGATTAGGATGGCCCTTTGGATCTTGTGAAAAAAGTACTGTGGT
 TTGGGAAGACACTGTGTTACCAGCAGAGAGACAGGGCAAGCAGAAATGTGCCTGTATGGACCTTTGCAAA
 GTCACTACAAACCTGTGTGGATCTGACGGAGAATTCTATGAAAACCACTGTGAAGTGCACAGAGCTGC
 TTGCCTGAAAAACAAAAGATTACCATTGTTTACAATGAAGACTGCTTCTTTAAAGGAGATAAGTGAAG
 ACTACTGAATACAGCAAGATGAAAAATATGCTATTAGATTTACAAAATCAAAAATATATTATGCAAGAAA
 ATGAAAAATCCTAATGGCGACGACATATCTCGGAAGAAGCTATTGGTGGATCAAATGTTTAAATATTTTGA
 TGCAGACAGTAATGGACTTGTAGATATTAATGAACTAACTCAGGTGATAAAACAGGAAGAACTTGGCAAG
 GATCTCTTTGATTGTACTTTGTATGTTCTATTGAAATATGATGATTTTAAATGCTGACAAGCACCTGGCTC
 TTGAAGAATTTTATAGAGCATTCCAAGTATCCAGTTGAGTCTGCCAGAAGATCAGAAAATAAGCATCAC
 TGCAGCAACTGTGGGACAAAAGTCTGTTCTGAGCTGTGCCATTCAAGGAACCTGAGACCTCCCATTATC
 TGGAAAAGGAACAATATTATTCTAAATAATTTAGATTTGGAAGACATCAATGACTTTGGAGATGATGGGT
 CCTTGTATATTACTAAGTTACCACAACCTCACGTTGGCAATTACACCTGCATGCAGATGGCTATGAACA
 AGTCTATCAGACTCACATCTTCCAAGTGAATGTTCCCTCCAGTCATCCGGGTGTATCCAGAGAGTCAGGCT
 AGAGAGCCTGGGTAACTGCCAGTCTTAGGTGCCATGCAGAGGGCATACCAAAGCCTCAGCTTGGCTGGT
 TGAAGAATGGAATTGATATTACACCAAAGCTTTCCAAACAACCTCACGCTTCAAGCAAAATGGCAGTGGT
 TCACATAAGCAATGTGCGCTATGAAGATACTGGAGCATACACTTGTATCGCAAAGAATGAAGCAGGAGTG
 GATGAAGACATCTCTTCTTTTTGTGGAAGACTCTGCTAGAAAGACCCGCTGGGAATTGGGAACATGT
 TCTATGTTTTTTATGAAGATGGAATCAAAGTGATAACAACCCATAGAATGTGAATTTAGAGGCACATTAA
 GCCTAGTGAAAAGCTCCTTGGATTTAGGATGAAGTCTGTCCCAAAGCTGAGGGAGATGAAGTTCAGAGG
 TGTGTGTGGGCATCAGCTGTTAATGTCAAAGACAAGTTTCAATTTATGTTGCACAGCCAACCTTTGGACAG
 TCCTTATTGTTGATGTGCAGTCCAAAAAGTTGTTTCCAGGAGTGCACAGACCCCTGTCCAGTTAAATT
 AACTATGACAAATCACATGATCAGGTCTGGGTGCTAAGCTGGGTACCTTGGAGAAGACATCACAACA
 CTACAGGTAATTACCCTGGCCAGTGGGAATGTGCCTCACCACACGATCCACACCAACCAGTGGGAAAGC
 AATTTGACAGAGTGGATGATTTTTTTCATCCCACCACAACACTCATTATCACCCATATGAGGTTTGGATT
 TATTCTTCATAAAGATGAAGCTGCACTACAAAAATTGATCTTGAACCATGTCATACATCAAGCAATT
 AACTTGAAGGACTATAAGTGCCTTCTCAGTCAATGGCATATACACACTTGGGAGGCTACTACTTCATTG
 GCTGCAACCTGACAGCACCGGAGCAGTTTCCCAACAGGTCATGGTGGACGGTGAATGACTCAGTCAT
 TGGGTTCAATAGTGATGTGACGGGCACTCCATATGTCTCTCCAGATGGCCACTACCTTGTGAGCATTAA
 GATGTGAAAGGCTTTGTAAGGGTTCAGTACATTACCATCAGAGGAGAAAACAGGAGGCTTTTGTATTT
 ACACAAATCTGCACATATCTGATCTGGCATTTCACCATCCTTTACTGAAGCCCACCAATATAACATCTA
 CGGTAGTTCAAGCACACAACTGATGTGCTTTTGTGGAGCTCTTCTGGGAAGGTCAAGATGATAAAG
 AGTCTCAAGGAACCACTCAAGGCAGAAGAATGGCCTTGGAAACCGGAAAAACAGGCAAAATCCAGGACAGT
 GCTTGTGGTCAATACCTGATGACACCTTCCAAGGACTCTCTTTCATCCTAGATGGACGACTCAATAA
 ATTAACCTGTGAGATCACTGAAGTTGAAAAAGGAATACAGTCATTTGGGTTGGAGATGCC

ACGCGTACGCGGCCGCTCGAGCAGAACTCATCTCAGAAGAGGATCTGGCAGCAATGATATCCTGGATT
 ACAAGGATGACGACGATAAGGTTTAA

Protein Sequence: >RC226203 representing NM_001128428
 Red=Cloning site Green=Tags(s)

```

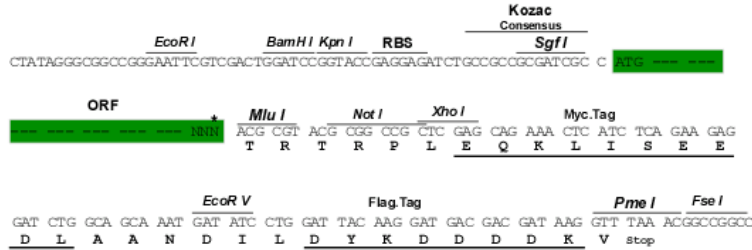
MFKCWSVVLVLGFIFLESEGRPTKEGGYGLKSYQPLMRLRHKEKNQESSRVKGFMIQDGPFGSCENKYCG
LGRHCVTSRETGQAEACMDLCKRHYKPVCGSDGEFYENHCEVHRAACLKKQKITIVHNEDCFFKGDCKCK
TTEYSKMKNMMLDLQNQKYIMQENENPNGDDISRKKLLVDQMFKYFDADSNGLVDINELTQVIKQEELGK
DLFDCTLYVLLKYDDFNADKHLALEEFYRAFQVIQLSLPEDQKLSITAATVGQSAVLSCAIQGTLRPPII
WKRNNIILNNDLEDINDFGDDGSLYITKVTTHVGNVTCYADGYEQVYQTHIFQVNVPPVIRVYPESQA
REPGVTASLRCHAEGIPKQPLGWLKNGIDITPKLSKQLTLQANGSEVHISNVRYEDTGAYTCIAKNEAGV
DEDISSLFVEDSARKTRLGIGNMFYVFYEDGIKVIQPIECEFRHIKPKSEKLLGFQDEVCPKAEGDEVQR
CVWASAVNVKDKFIYVAQPTLDRVLIQVQSQKVVQAVSTDPVPVKLHYDKSHDQVWVLSWGTLEKTSPT
LQVITLASGNVPHHTIHTQPVGKQFDRVDDFFIPTTTLLIITHMRFGLILHKDEAALQKIDLETMSYIKTI
NLKDYKCVPSLAYTHLGGYFYGCKPDSTGAVSPQVMVDGVTDSVIGFNSDVTGTPYVSPDGHYLV SIN
DVKGLVRVQYITIRGEIQEAFDIYTNLHISDLAFQPSFTEAHQYNIYSSSTQTDVLFVELSSGKVKMIK
SLKEPLKAEWPNRKNRQIQDSGLFGQYLMTPSKDSLFIIDGRLNKLNCEITEVEKGNTVIWVGDA
  
```

TRTRPLEQKLI SEEDLAANDILDYKDDDDKV

Restriction Sites: Sgfl-MluI

Cloning Scheme:

Cloning sites used for ORF Shuttling:



* The last codon before the Stop codon of the ORF

ACCN: NM_001128428

ORF Size: 2511 bp

OTI Disclaimer: The molecular sequence of this clone aligns with the gene accession number as a point of reference only. However, individual transcript sequences of the same gene can differ through naturally occurring variations (e.g. polymorphisms), each with its own valid existence. This clone is substantially in agreement with the reference, but a complete review of all prevailing variants is recommended prior to use. [More info](#)
OTI Annotation: This clone was engineered to express the complete ORF with an expression tag. Expression varies depending on the nature of the gene.

Components: The ORF clone is ion-exchange column purified and shipped in a 2D barcoded Matrix tube containing 10ug of transfection-ready, dried plasmid DNA (reconstitute with 100 ul of water).

Reconstitution Method:

1. Centrifuge at 5,000xg for 5min.
2. Carefully open the tube and add 100ul of sterile water to dissolve the DNA.
3. Close the tube and incubate for 10 minutes at room temperature.
4. Briefly vortex the tube and then do a quick spin (less than 5000xg) to concentrate the liquid at the bottom.
5. Store the suspended plasmid at -20°C. The DNA is stable for at least one year from date of shipping when stored at -20°C.

RefSeq: [NM_001128428.2](#), [NP_001121900.1](#)

RefSeq Size: 4805 bp

RefSeq ORF: 2514 bp

Locus ID: 56884

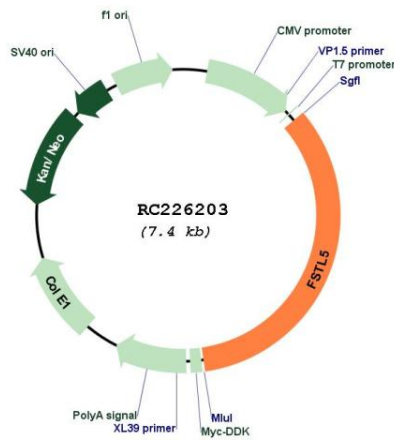
UniProt ID: [Q8N475](#)

Cytogenetics: 4q32.2

Protein Families: Secreted Protein

MW: 94.6 kDa

Product images:



Circular map for RC226203