

## Product datasheet for **RC226197**

### **ELFN1 (NM\_001128636) Human Tagged ORF Clone**

#### **Product data:**

Product Type:	Expression Plasmids
Product Name:	ELFN1 (NM_001128636) Human Tagged ORF Clone
Tag:	Myc-DDK
Symbol:	ELFN1
Synonyms:	PPP1R28
Mammalian Cell Selection:	Neomycin
Vector:	pCMV6-Entry (PS100001)
E. coli Selection:	Kanamycin (25 ug/mL)



[View online »](#)

**ORF Nucleotide Sequence:**

>RC226197 representing NM\_001128636  
 Red=Cloning site Blue=ORF Green=Tags(s)

TTTTGTAATACGACTCACTATAGGGCGGCCGGAATTCGTCGACTGGATCCGGTACCGAGGAGATCTGCC  
 GCC**CGATCGCC**

ATGGCCGGGCGTGGGTGGGGCGCCTGTGGGTGTGCGTGGCGGCCACCCTGCTGCACGCTGGCGGCC  
 TGGCCCGCGCAGACTGCTGGCTGATCGAGGGCGACAAGGGCTTCGTGTGGCTGGCCATCTGCAGCCAGAA  
 CCAACCCCTACGAGGCCATCCACAGCAGATCAACAGCACCATCGTGGACCTGCGGCTCAACGAGAAC  
 CGTATCCGCAGCGTGCAGTACGCCCTCGCTCAGCCGCTTTGGCAACCTCACGTACCTCAACCTCACCAAGA  
 ACGAGATCGGCTACATCGAGGACGGCGCTTCTCGGGCCAGTTCAACCTGCAGGTGCTGCAGCTGGGCTA  
 CAACCGGCTGCGCAACCTCACGGAGGGCATGCTGCGCGGCCCTGGCAAGCTGGAGTACCTGTACCTGCAG  
 GCCAACCTCATCGAGGTGGTATGGCCAGCAGCTTCTGGGAGTGTCCCAACATCGTCAACATCGACCTGT  
 CCATGAACCGCATCCAGCAGCTCAACAGCGGCACCTTCGCCGGCCTGGCCAAGCTGTCGGTGTGCGAGCT  
 CTACAGCAACCCCTTCTACTGCTCTGCGAGCTGCTGGGCTTCTGCGCTGGCTGGCCGCTTACCAAC  
 GCCACACAGAGCTACGACCGCATGCAGTGCAGTGCAGCGCCCGTCTACTCCGGCTACTACCTCCTGGGCC  
 AGGGCCGCGCGGCCACCGCAGCATCCTCAGCAAACCTGCAGTCACTGTCACCGAGGACTCGTACCGGGC  
 TGAGGTGGTGGGCCCCACGTCCAGCATCCGGGCGCTCACAGCCGGGCCGCTCCCCGCCGCCCGCCCT  
 CCGCCGGAGCCAGTGACATGCCCTGTGCCGATGATGAGTGTCTTCCGGGGACGGCACCACGCCACTGG  
 TGGCCCTGCCACGCTGGCCACGCGAGGCCGAGGCCCGCCCTCATCAAGGTCAAGCAGCTCACTCAGAA  
 CTCGGCCACCATACCGTCCAGCTGCCAGCCGTTCCACCGGATGTACACCTGGAGCATTTCAACAAC  
 AGCAAGGCCTCCACCGTGTCCAGGCTGACCAAGGCCAGGAGGAGATCCGTCTGACCAACCTGTTACGC  
 TCACCAACTACACTACTGCGTGGTGTCCACCAGCGCCGGGCTGCGCCACAACCACACTGCCTCACCAT  
 CTGCTTGGCCCGGCTGCCAGCCGCTGGTCCGGTGGCCAGCCCTCCACGGCCACCCACTACATCATG  
 ACCATCCTGGGCTGCCTCTTCCGCATGGTGTGGTGTGGGCGCCGCTCTACTACTGCCTGCGCAGCGGC  
 GGCGCCAGGAGGAGAAGCACAAGAAGGCCGCTCGGCAGCCGAGCTGGCAGCCTCAAGAAGACCATCAT  
 CGAGCTCAAGTACGGGCCAGAGCTGGAGGCGCCGGCCTGGCCCCGCTGTCCAGGGCCCGCTGTGGGC  
 CCCGAGGCCGTGACGCGCATCCCTTACCTGCCTGCGGCCGCGGAGGTGGAGCAGTACAAGCTGGTGGAGA  
 GCGCGGACACCCCAAGGCCAGCAAGGGCAGCTACATGGAGGTTCAACCGGGGACCCCTCCGAACGCAG  
 GACTGTGAGCTGGGCCGCGGCCCGCCGACAGCCAGAGTTCCGGTGGCCGAGATCTCCACCATCGCCAAG  
 GAGGTGGACAAGGTCAACCAGATCATCAACAACCTGCATCGACGCGCTCAAGTCCGAGTCCACCTCCTTCC  
 AGGGCGTCAAGTCGGGGCCCGTGTCCGTGCGGGAGCCCGCGCTGGTGTGCTGTCCGAGCCGCTGGCCGC  
 CAAGCACGGCTTCTGGCGCCCGGTACAAGGACGCTTCCGGCCACAGCCTGCAGCGGCACCACAGCGTG  
 GAGGCCGCGGGCCCCCTCGTGCCAGCACCTCGTCCAGCGGCTCCGTGCGCAGCCCCGCGCCTTCCGAG  
 CCGAGGCCGTGGGGTGCACAAGGCCGCGGCCGCGGAGGCCAAGTACATCGAGAAGGGCTCCCCGCGGC  
 CGACGCCATCCTACTGTGACACCCGCGGCCGCGTGTGCGGGCCGAGGCCGAGAAGGGTGGCCAGTAC  
 GGGGAGCACCGGCACTCGTACCCCGCTCCACCCGGCCGAGCCACTGCGCCCCCGGGCCACCGCCGC  
 CGCCTCCGACGAGGGCTGGGGCGAAGGCGTCCATCCTGGAGCCTCAACCGGCCGCGGCCCGCGCA  
 CCTCGCTACTCGCAGCTGTCCCGCAGTACCACAGCCTGAGCTACTCCTCCAGCCCCGAGTACACCTGC  
 CGGGCCTCCAGAGCATCTGGGAGCGTTCAGACTGAGCCGCGCGGCAACAAGGAGGAAGGAGTTCA  
 TGGCCGCGGGCCATGCCCTGCGCAAGAAGTTAGTTCGCCAAAGACGAGGATCTGCACGACATCCTGGA  
 CTAAGGAGGGCGTGTGGCCAGCACAAGTCC

**ACGGT**ACGCGGCCGCTCGAGCAGAACTCATCTCAGAAGAGGATCTGGCAGCAATGATATCCTGGATT  
 ACAAGGATGACGACGATAAGGTTAA

**Protein Sequence:** >RC226197 representing NM\_001128636  
Red=Cloning site Green=Tags(s)

MAGRGGWALWCVAAATLLHAGGLARADCWLEIGDKGFVWLAICSNQPPYEAIQQINSTIVDLRLNEN  
RIRSVQYASLSRFGNLTYNLTKNEIGYIEDGAFSGQFNLQVLQLGYNRLRNLTEGMLRGLGKLEYLYLQ  
ANLIEVVMASFFWECPNIVNIDLSMNRIQQLNSGTFAGLAKLSVCELYSNPFYCSCCELLGFLRWLAAFTN  
ATQTYDRMQCESPPVYSGYLLGQGRRGHRHSILSKLQSVCTEDSYAAEVGPPRPASGRSQPGRSPPPPP  
PPEPSDMPCADDECFSGDGTTPVALPTLATQAEARPLIKVKQLTQNSATITVQLPSPFHRMYTLEHFNN  
SKASTVSRLTKAQEEIRLTNLTNYTYCVVSTAGLRHNHTCLTICLPRLPSPGPVPSSTATHYIM  
TILGCLFGMVLVLGAVYYCLRRRRRQEEKHKAASAAAAGSLKKTIIELKYGPELEAPGLAPLSQGPLL  
PEAVTRIPYLPAAAGEVEQYKLVESADTPKASKGSYMEVRTGDPPERRDCELRPGPDSQSSVAEISTIAK  
EVDKVNQIINNCIDALKSESTSFQGVKSGPVSAEPPLVLLSEPLAAKHGFLAPGYKDAFGHSLQRHHSV  
EAAGPPRASTSSSGSVRSPRAFRAEAVGVHKAASAAEAKYIEKGSAAADAILTVTPAAAVLRAEAEKGRQY  
GEHRHSYPGSHPAEPPAPPPPPPPHEGLGRKASILEPLTRPRPRDLAYSQSPQYHLSYSSSPEYTC  
RASQSIWERFRLSRRRHKEEEEFMAAGHALRKKVQFAKDEDLHDILDYWKGVSAQHKS

TRTRPLEQKLISEEDLAANDILDYKDDDDKV

**Chromatograms:** [https://cdn.origene.com/chromatograms/mk8034\\_e07.zip](https://cdn.origene.com/chromatograms/mk8034_e07.zip)

**Restriction Sites:** Sgfl-Mlul

**Cloning Scheme:**


**ACCN:** NM\_001128636

**ORF Size:** 2484 bp

**OTI Disclaimer:** The molecular sequence of this clone aligns with the gene accession number as a point of reference only. However, individual transcript sequences of the same gene can differ through naturally occurring variations (e.g. polymorphisms), each with its own valid existence. This clone is substantially in agreement with the reference, but a complete review of all prevailing variants is recommended prior to use. [More info](#)

**OTI Annotation:** This clone was engineered to express the complete ORF with an expression tag. Expression varies depending on the nature of the gene.

**Components:** The ORF clone is ion-exchange column purified and shipped in a 2D barcoded Matrix tube containing 10ug of transfection-ready, dried plasmid DNA (reconstitute with 100 ul of water).

**Reconstitution Method:**

1. Centrifuge at 5,000xg for 5min.
2. Carefully open the tube and add 100ul of sterile water to dissolve the DNA.
3. Close the tube and incubate for 10 minutes at room temperature.
4. Briefly vortex the tube and then do a quick spin (less than 5000xg) to concentrate the liquid at the bottom.
5. Store the suspended plasmid at -20°C. The DNA is stable for at least one year from date of shipping when stored at -20°C.

**RefSeq:** [NM\\_001128636.3](#)

**RefSeq ORF:** 2487 bp

**Locus ID:** 392617

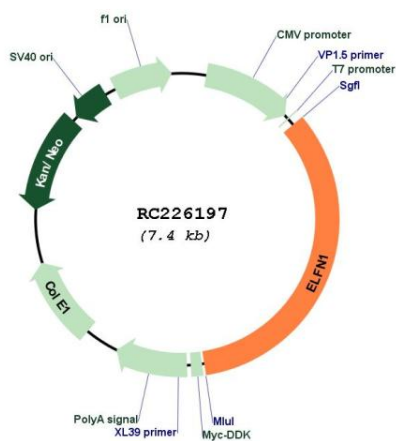
**UniProt ID:** [P0C7U0](#)

**Cytogenetics:** 7p22.3

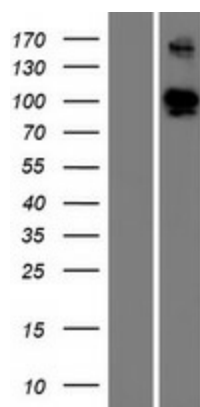
**MW:** 90.3 kDa

**Gene Summary:** Postsynaptic protein that regulates circuit dynamics in the central nervous system by modulating the temporal dynamics of interneuron recruitment. Specifically present in excitatory synapses onto oriens-lacunosum molecular (OLM) interneurons and acts as a regulator of presynaptic release probability to direct the formation of highly facilitating pyramidal-OLM synapses (By similarity). Inhibits phosphatase activity of protein phosphatase 1 (PP1) complexes.[UniProtKB/Swiss-Prot Function]

## Product images:



Circular map for RC226197



Western blot validation of overexpression lysate (Cat# [LY426990]) using anti-DDK antibody (Cat# [TA50011-100]). Left: Cell lysates from untransfected HEK293T cells; Right: Cell lysates from HEK293T cells transfected with RC226197 using transfection reagent MegaTran 2.0 (Cat# [TT210002]).