

Product datasheet for **RC226196**

KIFC3 (NM_001130100) Human Tagged ORF Clone

Product data:

Product Type:	Expression Plasmids
Product Name:	KIFC3 (NM_001130100) Human Tagged ORF Clone
Tag:	Myc-DDK
Symbol:	KIFC3
Mammalian Cell Selection:	Neomycin
Vector:	pCMV6-Entry (PS100001)
E. coli Selection:	Kanamycin (25 ug/mL)



[View online »](#)

**ORF Nucleotide
Sequence:**

>RC226196 representing NM_001130100
 Red=Cloning site Blue=ORF Green=Tags(s)

TTTTGTAATACGACTCACTATAGGGCGGCCGGAATTCGTCGACTGGATCCGGTACCGAGGAGATCTGCC
 GCC**CGGATCGCC**

ATGGTCCCCTCTCGCAGGACGTGGAACCTGGGAGCCACGCCCTCGCTGCGGGCCTGTGGAGAGTGGGCC
 GGGCCCCGGAGCCGAGCCGGGGATGGCTCGCCCCGCCAGCCAGCCAGCCGGCCGCCCTTT
 CCCACACACCGGCCGGGAGGTTGAGAACTGGGCGTGAAAAAGATACCCAGTCTGCGGTGACGAGGAC
 TCCAGTGCCTGAAGTGCAGCTCGCCAGCCCTAGCTCAGTGCCGAGCCCTTAGCGTGGACTGGGCTGGCC
 CCGGAAGCCCCACGGGCTCTACCTGACCCTGCAGGTAGAACACCTGAAGGAGAAGCTCATTAGCCAGGC
 CCAGGAAGTGAGCCGACTGCGATCTGAGCTGGGGGCACCGACTTGAGAAAGCACCGGGACCTGCTGATG
 GTGGAGAATGAGCGACTGAGGCAGGAGATGCGGCGCTGTGAGGCCGAGCTGCAAGAGCTGCGCACAAAGC
 CAGCAGGTCCTGCCAGGTTGTGAGCACAGCCAGGAGAGCGCCAGCTCCGTGACAAGCTGTCCCAGCT
 GCAGCTGGAGATGGCGAAAGCAAGGCATGCTGTCAGAGCTGAACCTAGAGGTGCAGCAGAAGACCGAC
 CGGCTGGCTGAGGTGGAGCTGCGACTCAAGGACTGCCTGGCTGAGAAGGCACAGGAGGAGGAGCGGCTTA
 GTCGGCGCCTGCGTGACAGCCACGAGACATTGCCAGCCTGCGGGCCAGTCCCCACCTGTCAAGTATGT
 CATCAAGACAGTGGAGGTGGAGTCGTCCAAGACCAAGCAGGCCCTCAGCGAGTCCCAGGCCCGGAACAG
 CACCTGCAGGAGCAGGTGGCTATGCAGAGGCAGGTGCTGAAGGAGATGGAACAGCAGCTGCAGAGCTCAC
 ACCAGCTGACCGCGCGGCTCCGGGCGCAGATTGCCATGTACGAGTCAGAGCTGGAGCGGGCCATGGGCA
 GATGCTGGAGGAGATGCAGTCCCTGGAAGAGGACAAGAACCGGCCATTGAGGAGGCTTTGCCAGAGCC
 CAGGTGGAGATGAAGGCTGTGCACGAGAATCTAGCAGGCGTCCGGACCACTTGTGACCTTGACGCCGG
 CACTGCCGACCCTCACCAACGACTACAATGGGCTCAAGCGGCAGGTGCGCGGCTTCCCACCTGCTGTGCA
 GGAGGCCCTCAGGAGTGTCAAGGCCGAGATAGGCCAGGCCATCGAGGAGGTCAACAGCAACAACCGAG
 CTGCTGCGCAAGTACCGCCGCGAGCTGCAGCTGCGTAAGAAGTGCCACAATGAGCTCGTGCAGGCTGAAAG
 GGAACATCCGAGTGATTGCTCGTGTCCGGCCAGTACCAAAGAGGATGGGGAAGGACCTGAGGCCACCAA
 TGCTGTGACTTTCGATGCCGACGACGACTCCATCATCCACCTGCTGCACAAGGGCAAGCCTGTGTCTTC
 GAGCTGGACAAGGTCTTCTCCCCACAGGCTCGCAGCAGGACGTGTTCCAGGAGGTGACGGCCCTGGTCA
 CCTTTGCAATGATGGCTCAATGTCTGCATCTTTGCGTACGGCCAGACGGGCGCCGGCAAGACGTACAC
 GATGGAGGGGACCGCTGAGAACCAGGTATCAACCAGCGGGCCCTGCAGCTGCTCTTCTCCGAGGTGCAG
 GAGAAGGCGTCTGACTGGGAGTACCATCACCGTCAGCGCTGCGGAGATCTACAATGAGGTCTCAGGG
 ACCTGCTAGGAAAGAGCCTCAGGAAAACTGGAGATCCGGCTGTGCCAGACGGCAGTGGGCAGCTGTA
 TGTACCAGGGCTGACTGAGTTCCAAGTGACAGCGTGGACGACATCAACAAGGTGTTGAGTTTGGCCAC
 ACTAATCGCACGACCGAGTTACCAACCTGAACGAGCACAGCTCCCGCTCGCACGCGCTGCTCATCGTGA
 CGGTGCGAGGCGTGGACTGCAGCACAGGCTCCGCACCACGGGGAAGCTGAACCTGGTGGACTTGGCTGG
 CTCGGAGCGCGTGGGCAAGTCCGGGGCCGAGGGCAGCCGCTGCGGGAGGCGCAGCACATCAACAAGTGC
 CTGTCCGCTCTGGGGACGTCAATTGCTGCCCTGCGCTCCCGCCAGGGCCACGTGCCCTTCCGCAACTCCA
 AGCTCACCTACCTGCTGCAGGATTGCTTAGTGGTGACAGCAAGACCCTCATGGTGGTACAGGTGTCCCC
 CGTGGAGAAGAACAAGTACGAGACGCTCTATCCCTCAAGTTTGGCTGAGAGGGTGGCTCTGTGGAGCTG
 GGGCCTGGGCTACGACAGGCAGAGCTTGGTCTGGTCAAGCCAGGAGCATCTAGAGTGGGAGCCGGCTT
 GTCAGACGCCACAGCCCTCGGCACGGGCCACTCAGCCCCAGCTCTGGGACCAGTAGCCGCCCTGGATC
 CATCCGGAGGAAGCTGCAGCCCTCGGCC

ACGCGTACGCGGCCGCTCGAGCAGAACTCATCTCAGAAGAGGATCTGGCAGCAATGATATCCTGGATT
 ACAAGGATGACGACGATAAGGTTTAA

Protein Sequence: >RC226196 representing NM_001130100
Red=Cloning site Green=Tags(s)

MVPSRRTWNLGATPSLRGLWRVGRAPEPEPGMARPAPAPASPAARPFPHGTGPGRLRTGRGKDT PVC GDED
SSARSAARPALAQCRAL SVDWAGPGSPHGLYL TLQVEHLKEKLI SQAQEVSR LRSELGGTDLEKHRD LLM
VENERLRQEMRRCEAELQELRTPAGPCPGCEHSQESAQLRDKLSQLQLEMAESKGM LSELNLEVQQKTD
RLAEVELRLKDCLA EKAQEEERLSRRLRDSHETIASLRAQSPPVKYVIKTVEVESSKTKQALSESQARNQ
HLQEQVAMQRQVLKEMEQQ LQSSHQLTARLRAQI AMYESELERAHGQMLEEMQSLEEDKNRAIEEAFARA
QVEMKAVHENLAGVRTNLLTLQPALRTLNDYNGLKRQVRGFPLLLQEALRSVKAEIGQAIIEEVNSNNQE
LLRKYRRELQLRKKCHNELVRLKGNIRVIARVRPVTKEDGEGPEATNAVTFDADDDSI I HLLHKGKPVSF
ELDKVFS PQASQQDVFQEVQALVTSCIDGFNVCIFAYGQTGAGKTYTMEGTAENPGINQRALQLLFSEVQ
EKASDWEY TITVSA AEIYNEVLRDLLGKEPQEKLEIRLCPDGGSQLYVPGLTEFQVQSVDDINKVFEFGH
TNRTTEFTNLNEHSSRSHALLIVTVRGVDCSTGLRTTGKLNLDLAGSERVKGSGAEGSRLREAQHINKS
LSALGDVIAALRSRQGHVPPFRNSKLT YLLQDSL S GDSKTL MVVQVSPVEKNTSETLYSLKFAERVRSVEL
GPGLRRAELGSWSSQEHLWE PACQTPQPSARAH SAPSSGTSSRPGSIRRKLQPSA

TRTRPLEQKLI SEEDLAANDILDYKDDDDKV

Chromatograms: https://cdn.origene.com/chromatograms/mk8034_e08.zip

Restriction Sites: Sgfl-Mlul

Reconstitution Method:

1. Centrifuge at 5,000xg for 5min.
2. Carefully open the tube and add 100ul of sterile water to dissolve the DNA.
3. Close the tube and incubate for 10 minutes at room temperature.
4. Briefly vortex the tube and then do a quick spin (less than 5000xg) to concentrate the liquid at the bottom.
5. Store the suspended plasmid at -20°C. The DNA is stable for at least one year from date of shipping when stored at -20°C.

RefSeq: [NM_001130100.2](#)

RefSeq ORF: 2481 bp

Locus ID: 3801

UniProt ID: [Q9BVG8](#)

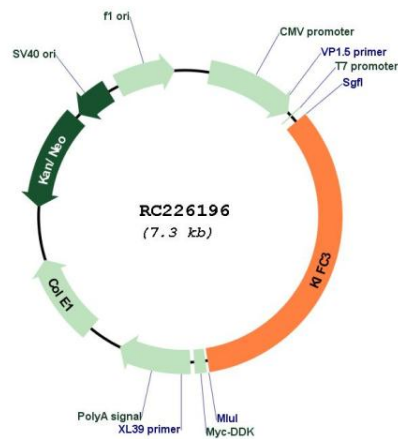
Cytogenetics: 16q21

Protein Families: Druggable Genome

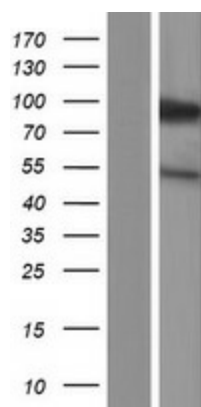
MW: 91.8 kDa

Gene Summary: This gene encodes a member of the kinesin-14 family of microtubule motors. Members of this family play a role in the formation, maintenance and remodeling of the bipolar mitotic spindle. The protein encoded by this gene has cytoplasmic functions in the interphase cells. It may also be involved in the final stages of cytokinesis. Alternative splicing results in multiple transcript variants encoding different isoforms. [provided by RefSeq, Jan 2016]

Product images:



Circular map for RC226196



Western blot validation of overexpression lysate (Cat# [LY427162]) using anti-DDK antibody (Cat# [TA50011-100]). Left: Cell lysates from untransfected HEK293T cells; Right: Cell lysates from HEK293T cells transfected with RC226196 using transfection reagent MegaTran 2.0 (Cat# [TT210002]).