

Product datasheet for **RC226191**

CDKN1A interacting zinc finger protein 1 (CIZ1) (NM_001131018) Human Tagged ORF Clone

Product data:

Product Type:	Expression Plasmids
Product Name:	CDKN1A interacting zinc finger protein 1 (CIZ1) (NM_001131018) Human Tagged ORF Clone
Tag:	Myc-DDK
Symbol:	CIZ1
Synonyms:	LSFR1; NP94; ZNF356
Vector:	pCMV6-Entry (PS100001)
E. coli Selection:	Kanamycin (25 ug/mL)
Cell Selection:	Neomycin



[View online »](#)

ORF Nucleotide
Sequence:

>RC226191 representing NM_001131018
Red=Cloning site Blue=ORF Green=Tags(s)

TTTTGTAATACGACTCACTATAGGGCGGCCGGGAATTCGTCGACTGGATCCGGTACCGAGGAGATCTGCC
GCC**CGGATCGCC**

ATGTT**CAGCCAGCAGCAGCAGCAGCAGCTCCAGCAACAGCAGCAGCAGCTCCAGCAGTTACAGCAGCAGC**
AGCTCCAGCAGCAGCAATTGCAGCAGCAGCAGTTACTGCAGCTCCAGCAGCTGCTCCAGCAGTCCCACC
ACAGGCCCCGTTGCCATGGCTGTCAGCCGGGGCTCCCCCGCAGCAGCCACAGCAGCCGTTCTGAAT
CTCCAGGGCACCAACTCAGCCTCCCTCCTCAACGGCTCCATGCTGCAGAGAGCTTTGCTTTTACAGCAGT
TGCAAGGTAACCTCCGAGGCTATGGCATGGCATCCCCAGGCCCTCGCAGCCCCAGCCTCACACCCCCACA
ACTGGCCACTCCAAATTTGCAACAGTTCCTTTCCCAGGCCACTCGCCAGTCTTGTGGGACCTCCTCCT
GTTGGGGTCCCCATGAACCTTCCAGTTCACCTTTCCAGGACGGAACCCCGAAGAACAGGCCCGGACCT
CCTCCTTACCACCCCAATCGAAAGGATTCCTTCTCAGACAATGCCTGTGGAAGACAAGTCAGACCC
CCCAGAGGGGTCTGAGGAAGCCGAGAGCCCGGATGGACACACCAGAAGACCAAGATTTACCGCCCTGC
CCAGAGGACATCGCCAAGGAAAAACGACTCCAGCACCTGAGCCTGAGCCTTGTGAGGCGTCCGAGCTGC
CAGCAAAGAGATTGAGGAGCTCAGAAGAGCCACAGAGAAGGAACCTCCAGGGCAGTTACAGGTGAAGGC
CCAGCCGAGGCCGGATGACAGTACCGAAACAGACACAGACACCAGACCTGCTGCCTGAGGCCCTGGAA
GCCCAAGTGCTGCCACGATTCAGCCACGGTCTGCAGGTCCAGGCCAGGTGCAGTCACAGACTCAGC
CGCGGATACCATCCACAGACACCCAGGTGCAGCCAAAGCTGCAGAAGCAGGCGCAAAACACAGACCTCCT
AGAGCACTTAGTGCTGCAACAGAAGCAGGTGCAGCCACAGCTGCAGCAGGAGGCAGAGCCACAGAAGCAG
GTGCAGCCACAGGTCCACACACAGGCACAGCCAGCGTCCAGCCACAGGAGCATCCTCCAGCCAGGTGT
CAGTACAGCCACAGAGCAGACCCATGAGCAGCCTCACACCCAGCCGAGGTGTCGTTGCTGGCTCCAGA
GCAAAACACAGTTGTGGTTCATGTCTGGGGCTGGAGATGCCACCTGATGCAGTAGAAGCTGGTGGAGGC
ATGGAAAAGACCTTGCCAGAGCCTGTGGGCACCCAAGTCAGCATGGAAGAGATTCAGAATGAGTCGGCCT
GTGGCCTAGATGTGGGAGAAATGTGAAAACAGAGCGAGAGAGATGCCAGGGGTATGGGGCGCCGGGGGCTC
CCTGAAGGTCACCATCTGCAGAGCAGTGACAGCCGGGCTTTAGCACTGTACCCCTGACACCTGTCCCC
CGCCCCAGTGACTCCGTCTCCTCACCCCTGCGGCTACCAGCACTCCCTTAAGCAGGCCCTCAGTTCT
TCTGCTACATCTGCAAGGCCAGCTGCTCCAGCCAGCAGGAGTCCAGGACCACATGTCGGAGCCTCAGCA
CCAGCAGCGGCTAGGGGAGATCCAGCACATGAGCCAAGCCTGCCTCCTGTCCCTGCTGCCGTGCCCGG
GACGTCCTGGAGACAGAGGATGAGGAGCCTCCACCAAGGCGCTGGTGAACACCTGCCAGCTCTACTACA
TGGGGGACCTGATCCAACACCGCAGGACACAGGACCACAAGATTGCCAAACAATCCTTGCGACCCCTCTG
CACCGTTTGCAACCGCTACTTCAAACCCCTCGCAAGTTTGTGGAGCACGTGAAGTCCCAGGGGCATAAG
GACAAAGCCAAGGAGCTGAAGTCGCTTGAGAAAGAAATTGCTGGCCAAGATGAGGACCATTCTATTACAG
TGGACGCTGTGGGTTGCTTCGAGGGTATGAAGAAGAGGAAGAGGATGATGAGGATGAAGAAGAGATCGA
GGTTGAGGAGGAACCTGCAAGCAGGTGAGGTCCAGAGATATATCCAGAGAGGAGTGAAGGGCTCGGAG
ACCTACAGCCCAATACTGCATATGGTGTGACTTCTGGTGCCCGTATGGGCTATATCTGCCGCATCT
GCCACAAGTTCTATCACAGCAACTCAGGGGCACAGCTCTCCACTGCAAGTCCCTGGGCCACTTTGAGAA
CCTGCAGAAATACAAGGGCGCCAAGAACCCAGCCCCACCACCCGACCTGTGAGCCGCGGTGCGCAATC
AAGCCCCGGAACGCTTTGACAGCCTGTTACCTCCAGCGGCCGCCACCTCCAGCCCAACACCCAGG
ACAAAACACCCAGCAAGGTGACGGCTCGACCTCCAGCCCCACTACCTCGGCGCTCAACCCGCTCAA
AACC

ACGCGTACGCGGCCGCTCGAGCAGAACTCATCTCAGAAGAGGATCTGGCAGCAATGATATCCTGGATT
ACAAGGATGACGACGATAAGGTTTAA

Protein Sequence: >RC226191 representing NM_001131018
 Red=Cloning site Green=Tags(s)

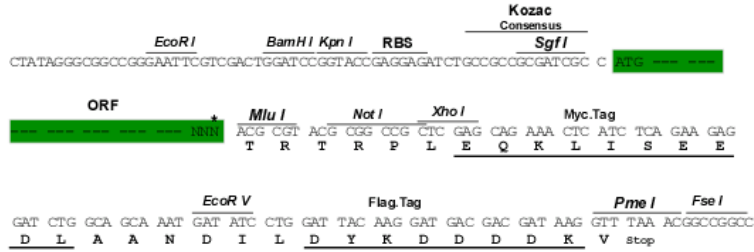
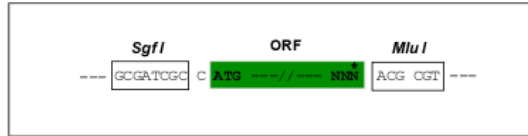
MFSQQQQQLQQQQQLQQLQQQLQQQLQQQLLQLQQLLQQSPPQAPLPMVSRGLPPQQPQPLLN
 LQGTNSASLLNGSMLQRALLLQQLQGNLRGYGMASPLAAPS LTPPQLATPNLQQFFPQATRQSLLGPPP
 VGVPMPNSQFNLSGRNPQKQARTSSSTTPNRKSSSQTMPVEDKSDPPEGSEEAAPRMDTPEDQDLPPC
 PEDIAKEKRTPAPEPEPCEASELPAKRLRSSEEPTEKEPPGQLQVKAQPQARMTVPKQTQTPDLLPEALE
 AQVLPRFQPRVLQVQAQVQSQTQPRIPSTDTQVQPKLQKQAQTQTSPEHLVLLQKQVQPQLQQEAEFQKQ
 VQPQVHTQAQPSVQPQEHPPAQVSVQPPEQTHEQPHTQPQVSLLAPEQTPVVVHVCGLEMPDVAEAGGG
 MEKTLPEPVGTQVSMEEIQNESACGLDVGECENRAREMPGVWGAGGSLKVTILQSSDSRAFSTVPLTPVP
 RPSDSVSSTPAATSTPSKQALQFFCYICKASCSSQEFQDHMSEPQHQRLLGEIQHMSQACLLSLLPVPR
 DVLETEDEEPPRRWCNTCQLYYMGDLIQHRRTQDHKIAKQSLRPFCTVCNRYFKTPRKFEHVKSQGHK
 DKAKELKSLEKEIAGQDEDFITVDAVGCFCGDEEEEDDEDEEEIEVEEELCKQVRSRDISREEWKGSE
 TYPNTAYGVDFLVPVMGYICRICHKFYHSNSGAQLSHCKSLGHFENLQKYKAAKNPSPTRPVSRRCAI
 NARNALTALFTSSGRPPSQPNTQDKTPSKVTARPSQPPLPRRSTRLKT

TRTRPLEQKLISEEDLAANDILDYKDDDDKV

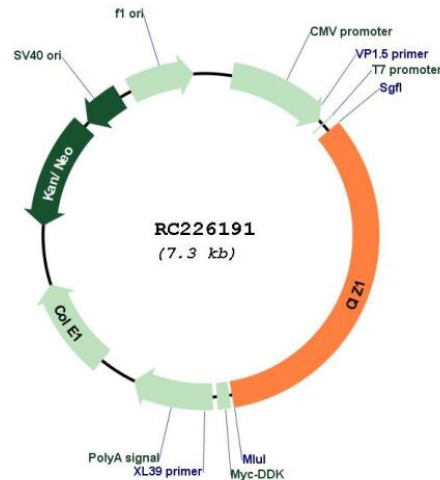
Restriction Sites: Sgfl-MluI

Cloning Scheme:

Cloning sites used for ORF Shutting:



* The last codon before the Stop codon of the ORF

Plasmid Map:


ACCN: NM_001131018

ORF Size: 2454 bp

OTI Disclaimer: The molecular sequence of this clone aligns with the gene accession number as a point of reference only. However, individual transcript sequences of the same gene can differ through naturally occurring variations (e.g. polymorphisms), each with its own valid existence. This clone is substantially in agreement with the reference, but a complete review of all prevailing variants is recommended prior to use. [More info](#)

OTI Annotation: This clone was engineered to express the complete ORF with an expression tag. Expression varies depending on the nature of the gene.

Components: The ORF clone is ion-exchange column purified and shipped in a 2D barcoded Matrix tube containing 10ug of transfection-ready, dried plasmid DNA (reconstitute with 100 ul of water).

Reconstitution Method:

1. Centrifuge at 5,000xg for 5min.
2. Carefully open the tube and add 100ul of sterile water to dissolve the DNA.
3. Close the tube and incubate for 10 minutes at room temperature.
4. Briefly vortex the tube and then do a quick spin (less than 5000xg) to concentrate the liquid at the bottom.
5. Store the suspended plasmid at -20°C. The DNA is stable for at least one year from date of shipping when stored at -20°C.

RefSeq: [NM_001131018.2](#)

RefSeq ORF: 2457 bp

Locus ID: 25792

UniProt ID: [Q9ULV3](#)

Cytogenetics: 9q34.11

MW: 91 kDa

Gene Summary: The protein encoded by this gene is a zinc finger DNA binding protein that interacts with CIP1, part of a complex with cyclin E. The encoded protein may regulate the cellular localization of CIP1. Several transcript variants encoding different isoforms have been found for this gene. [provided by RefSeq, Apr 2012]