

## Product datasheet for **RC226188**

### **TBC1D5 (NM\_001134381) Human Tagged ORF Clone**

#### **Product data:**

Product Type:	Expression Plasmids
Product Name:	TBC1D5 (NM_001134381) Human Tagged ORF Clone
Tag:	Myc-DDK
Symbol:	TBC1D5
Mammalian Cell Selection:	Neomycin
Vector:	pCMV6-Entry (PS100001)
E. coli Selection:	Kanamycin (25 ug/mL)



[View online »](#)

**ORF Nucleotide Sequence:**

>RC226188 representing NM\_001134381.  
 Blue=ORF Red=Cloning site Green=Tag(s)

```
GCTCGTTTAGTGAACCGTCAGAATTTTGTAAATACGACTCACTATAGGGCGGCCGGGAATTCGTGCACTG
GATCCGGTACCGAGGAGATCTGCCGCCACGATCGCC
ATGTATCATTCTTATCTGAAACTAGACATCCTCTGCAGCCAGAAGAACAAGAAGTAGGCATTGACCCC
TTGTCAGATTACTCTAACAAAGTCTGGAGGAGATCAAATAAAAAATGGAAGAAGAACAAGTCTACTTTA
GACTCTGAAGGGACTTTTTAATTCCTATAGGAAAGAATGGGAAGAAGTATTTGTAACAACAATTACTTTG
GCAACAATAAGGCAGAAGGGGATTAATGGGCAGCTGAGAAGCAGCAGGTTCCGCAGCATTGCTGGAAG
CTATTTCTTTGTGTTCTTCTCAAGACAAAAGTCAATGGATAAGTAGAATTGAAGAATTAAGAGCATGG
TATAGCAACATTAAGAAATACATATTACCAACCCGAGGAAGGTTGTTGGCCAACAAGATTTGATGATC
AATAATCCTCTTTCACAGGATGAAGGGAGTCTTGGAAACAATTTCTCAAGATAAAGAAGTTCGATCA
ATGATTGAACAAGATGTCAAAGAACGTTTCTGAAATGCAGTTTTTCCAGCAAGAAAATGTGAGAAAA
ATTCTTACAGATGTTCTTTCTGTTATGCCAGAGAAAACGAGCAGTTGCTTTATAACAGGGCATGCAC
GAACTGTTAGCACCTATAGTCTTTGCTTCACTGTGACCACCAAGCTTTTCTACATGCCAGTGAGTCT
GCACAGCCAGTGAGGAAATGAAAAGTGTCTTGAACCTGAGTATCTGGAACATGATGCCTATGCAGTG
TTCTCACAACTTATGAAAAGTGTGAACCTTGTTTTCAACTTTTGAAGCATGATGGTCAGAAGGGGAAA
GAAACTGATGACTCCCATTCCCTTTGCTAGACCACAAGATTTAGGGCCAACAATTGCTATTGTTACT
AAAGTCAACCAGATCCAGGATCATCTACTGAAGAAGCATGATATTGAGCTTTACATGCACCTGAACAGA
CTAGAAATTGCACCACAGATATATGGGTTAAGGTGGGTGCGGCTGCTATTTGGACGAGAGTTCCCCCTG
CAGGACCTTCTGGTGGTCTGGGATGCCTTGTTTGACAGCGGCTCAGCCTGGGTTTAGTAGATTATC
TTCGTAGCCATGTTACTTTACATCCGAGATGCTTTGATCTCTAGTAACTACCAGACCTGCTCGGCCCT
CTGATGCATTACCCATTCATCGGGGATGTACACTACTGATTCTTAAGGCTCTGTTCTTAGAGATCCA
AAGAGAAATCCAAGACCAGTGACTTATCAATTCATCCAATTTAGATTATTACAAAGCAGGAGGACA
GACCTCATGAATAAAAGCCGGACCAATGCCAAAGGTGCTCCCCTGAATATAAATAAGGTCTCTAATAGC
CTGATTAATTTTGAAGAAAGTTGATTTCCCGCAATGGCTCCAGGCAGTGCAGGTGGCCCTGTACCT
GGAGGCAACAGCAGTAGCTCCTCCTCTGTTGTAATTCCTACCAGGACCTCAGCAGAGGCCCAAGCCAT
CACTTGCAACAGCAACAGCAGCAGCAGAGGCTGATGAAATCAGAAAGCATGCCTGTGCAATTGAACAAA
GGCGATGTAGTTACAGGAAGCGATGCTCAGGTTTCTGTTCTGTCCAGACTCTAACTGACCTCAAGGG
CTAAGTTCTAAAAACATCAGTTCATCTCCAAGCGTTGAGAGTTTGCCTGGAGGAAGAGAATTCAGTGGC
TCTCCACCTTCATCTGCTACTAAAAAGATTCCTTTTTTAGCAACATCTCAGTTCTCGCTCACACAGC
AAAATATGGGCAGAAAAGAATCTGAAGAAGAATTAGAAGCCAAATTTCCCTCCTTCAAGGGCAGTTG
AATGACCTGGATGCCATGTGCAAATACTGTGCAAAGGTGATGGACACTCATCTTGTAATATTCAAGAT
GTGATATTACAAGAAAATTTGAAAAAGAAGATCAAATTTCTGGTTTCCCTGGCAGGATTAACAGATC
AAAGACATTCTAAAAGGTTCCCTGCGTTTTAACAGAGCCAGCTAGAGGCCGAAGAGAACGAACAGATC
ACCATTGGCGACAACCACTACTGCTCCAGCGGCCAGGGCCAGGGCCGAGGCCAAGGCCAGAGCGTTCAA
ATGTCAGGGGCCATTAACAGGCCTCTCAGAAACGCCAGGGTGCAGTATAGAGGAATCCGATGAC
TTCATCCTGATTTCAAAGATGATGATGGGAGCAGTGCCAGGGGCTCCTTCTCCGGCCAGGCCAGCCT
CTTCGCACCCTCAGAAGCACCTCTGGGAAAAGCCAGGCCCCAGTCTGCTCCCACTGGTGTCTCAGAT
CCTGATGGGCCAGCCTCAGCTTCTCCAGCAACCCAGCTCCAGTCTGATGACGACAGCAGCAAG
GACTCTGGCTTACCATTGTGAGTCCCCTGGACATC
ACGCGTACGCGGCCGCTCGAGCAGAACTCATCTCAGAAGAGGATCTGGCAGCAAATGATATCCTGGAT
TACAAGGATGACGACGATAAGGTTTAAACGGCCGGC
```

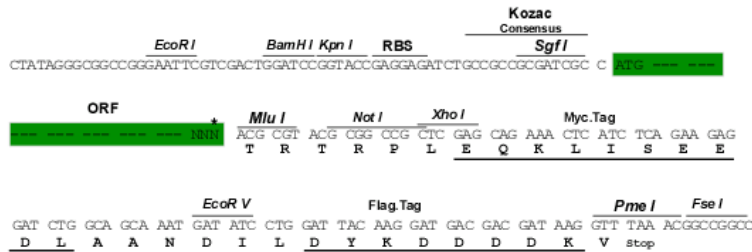
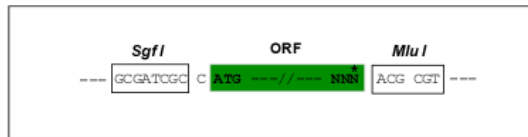
**Protein Sequence:** >Peptide sequence encoded by RC226188  
 Blue=ORF Red=Cloning site Green=Tag(s)

MYHSLSETRHPLQPEEQEVGIDPLSSYSNKSGGDSNKNRRTSSTLDSEGTFNYSRKWEELFVNNNYL  
 ATIRQKGINGQLRSSRFRSICWKLFLCFLPQDKSQWISRIEELRAWYSNIKEIHTNPRKVVGQDLMI  
 NNPLSQDEGLWNKFFQDKELRSMIEQDVKRTFPEMQFFQQENVRKILTDVLFYARENEQLLYKQGMH  
 ELLAPIVFLHCDHQAFHLHASESAQPSEEMKTVLNPEYLEHDAYAVFSQLMETAEPWFSTFEHDGQK GK  
 ETLMTPIPFARPQDLGPTIAIVTKVNQIQDHLLKKHDIELYMHLNRLEIAPQIYGLRWVRLFLGREFPL  
 QDLLVVWDALFADGLSLGLVDYIFVAMLLYIRDALISSNYQTCLGLLMHYPFIGDVHSLILKALFLRDP  
 KRNPRTVYQFHPNLDYYKARGADLMNKSRTNAKGAPLNINKVSNLINFGRKLI SPAMAPGSAGGPVP  
 GGNSSSSSSVVIPTRTSAEAPSHHLQQQQQQRLMKSEMPVQLNKGDVVTGSDAQVSVPVQTLTDLQG  
 LSSKNISSSPVESLPGGREFTGSPSSATKKDSFFSNISRSRSHSKTMGRKESEEELEAQISFLQGQL  
 NDL DAMCKYCAKVM DTHLVNIQDVILQENLEKEDQILVSLAGLKQIKDILKGLRFNQSQLEAEENEQI  
 TIADNHYCSSGQGGGQGVQMSGAIKQASSETPGCTDRGNSDDF ILISKDDGSSARGSFSGQAQP  
 LRTL RSTSGKSQAPVCSPLVFS DPLMGPASASSNPSSSPDDSSKDSGFTIVSPLDI  
 TRTRPLEQKLI SEEDLAANDILDYKDDDDKV

**Restriction Sites:** SgfI-MluI

**Cloning Scheme:**

Cloning sites used for ORF Shuttling:



\* The last codon before the Stop codon of the ORF

**ACCN:** NM\_001134381

**ORF Size:** 2451 bp

**OTI Disclaimer:** The molecular sequence of this clone aligns with the gene accession number as a point of reference only. However, individual transcript sequences of the same gene can differ through naturally occurring variations (e.g. polymorphisms), each with its own valid existence. This clone is substantially in agreement with the reference, but a complete review of all prevailing variants is recommended prior to use. [More info](#)

**OTI Annotation:** This clone was engineered to express the complete ORF with an expression tag. Expression varies depending on the nature of the gene.

**Components:** The ORF clone is ion-exchange column purified and shipped in a 2D barcoded Matrix tube containing 10ug of transfection-ready, dried plasmid DNA (reconstitute with 100 ul of water).

**Reconstitution Method:**

1. Centrifuge at 5,000xg for 5min.
2. Carefully open the tube and add 100ul of sterile water to dissolve the DNA.
3. Close the tube and incubate for 10 minutes at room temperature.
4. Briefly vortex the tube and then do a quick spin (less than 5000xg) to concentrate the liquid at the bottom.
5. Store the suspended plasmid at -20°C. The DNA is stable for at least one year from date of shipping when stored at -20°C.

**RefSeq:** [NM\\_001134381.2](#)

**RefSeq ORF:** 2454 bp

**Locus ID:** 9779

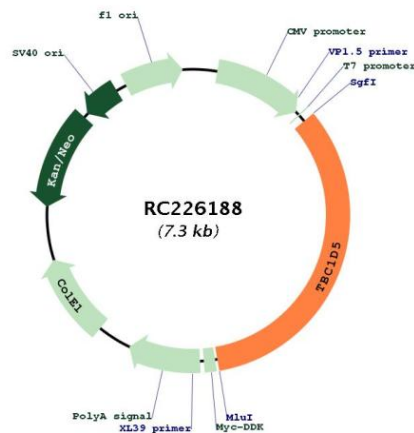
**UniProt ID:** [Q92609](#)

**Cytogenetics:** 3p24.3

**MW:** 91.2 kDa

**Gene Summary:** May act as a GTPase-activating protein (GAP) for Rab family protein(s). May act as a GAP for RAB7A. Can displace RAB7A and retromer CSC subcomplex from the endosomal membrane to the cytosol; at least retromer displacement seems to require its catalytic activity (PubMed:19531583, PubMed:20923837). Required for retrograde transport of cargo proteins from endosomes to the trans-Golgi network (TGN); the function seems to require its catalytic activity. Involved in regulation of autophagy (PubMed:22354992). May act as a molecular switch between endosomal and autophagosomal transport and is involved in reprogramming vesicle trafficking upon autophagy induction. Involved in the trafficking of ATG9A upon activation of autophagy. May regulate the recruitment of ATG9A-AP2-containing vesicles to autophagic membranes (PubMed:24603492).[UniProtKB/Swiss-Prot Function]

### Product images:



Circular map for RC226188