

Product datasheet for RC226178L1

SEZ6L2 (NM_001114100) Human Tagged Lenti ORF Clone

Product data:

Product Type:	Expression Plasmids
Product Name:	SEZ6L2 (NM_001114100) Human Tagged Lenti ORF Clone
Tag:	Myc-DDK
Symbol:	SEZ6L2
Synonyms:	BSRPA; PSK-1
Mammalian Cell Selection:	None
Vector:	pLenti-C-Myc-DDK (PS100064)
E. coli Selection:	Chloramphenicol (34 ug/mL)
ORF Nucleotide Sequence:	The ORF insert of this clone is exactly the same as(RC226178).
Restriction Sites:	SgfI-MluI
Cloning Scheme:	

Cloning sites used for ORF Shuttling:



* The last codon before the Stop codon of the ORF.

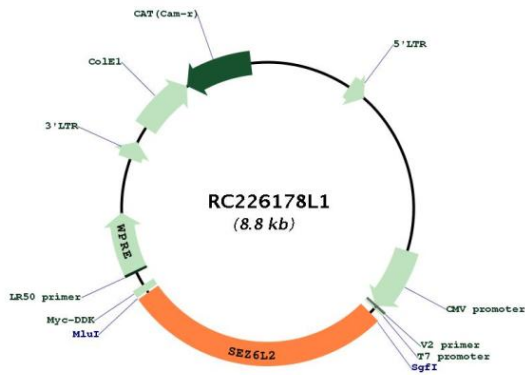
ACCN:	NM_001114100
ORF Size:	2427 bp



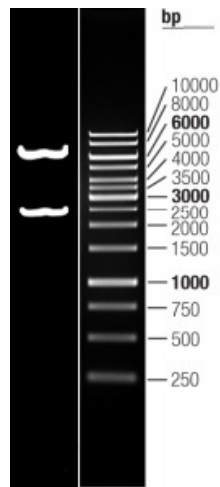
[View online »](#)

OTI Disclaimer:	The molecular sequence of this clone aligns with the gene accession number as a point of reference only. However, individual transcript sequences of the same gene can differ through naturally occurring variations (e.g. polymorphisms), each with its own valid existence. This clone is substantially in agreement with the reference, but a complete review of all prevailing variants is recommended prior to use. More info
OTI Annotation:	This clone was engineered to express the complete ORF with an expression tag. Expression varies depending on the nature of the gene.
Components:	The ORF clone is ion-exchange column purified and shipped in a 2D barcoded Matrix tube containing 10ug of transfection-ready, dried plasmid DNA (reconstitute with 100 ul of water).
Reconstitution Method:	<ol style="list-style-type: none">1. Centrifuge at 5,000xg for 5min.2. Carefully open the tube and add 100ul of sterile water to dissolve the DNA.3. Close the tube and incubate for 10 minutes at room temperature.4. Briefly vortex the tube and then do a quick spin (less than 5000xg) to concentrate the liquid at the bottom.5. Store the suspended plasmid at -20°C. The DNA is stable for at least one year from date of shipping when stored at -20°C.
RefSeq:	NM_001114100.1
RefSeq ORF:	2430 bp
Locus ID:	26470
UniProt ID:	Q6UXD5
Cytogenetics:	16p11.2
Protein Families:	Druggable Genome, Transmembrane
MW:	86.7 kDa
Gene Summary:	This gene encodes a seizure-related protein that is localized on the cell surface. The gene is located in a region of chromosome 16p11.2 that is thought to contain candidate genes for autism spectrum disorders (ASD), though there is no evidence directly implicating this gene in ASD. Increased expression of this gene has been found in lung cancers, and the protein is therefore considered to be a novel prognostic marker for lung cancer. Alternative splicing of this gene results in multiple transcript variants. [provided by RefSeq, Aug 2011]

Product images:



Circular map for RC226178L1



Double digestion of RC226178L1 using SgfI and MluI