

Product datasheet for **RC226174**

ARHGEF7 (NM_001113511) Human Tagged ORF Clone

Product data:

Product Type:	Expression Plasmids
Product Name:	ARHGEF7 (NM_001113511) Human Tagged ORF Clone
Tag:	Myc-DDK
Symbol:	ARHGEF7
Synonyms:	BETA-PIX; COOL-1; COOL1; Nbla10314; P50; P50BP; P85; P85COOL1; P85SPR; PAK3; PIXB
Mammalian Cell Selection:	Neomycin
Vector:	pCMV6-Entry (PS100001)
E. coli Selection:	Kanamycin (25 ug/mL)



[View online »](#)

ORF Nucleotide Sequence:

>RC226174 representing NM_001113511
 Red=Cloning site Blue=ORF Green=Tags(s)

TTTTGTAATACGACTCACTATAGGGCGGCCGGAATTCGTCGACTGGATCCGGTACCGAGGAGATCTGCC
 GCC**CGGATCGCC**

ATGAATTCGCCGAGCAAACCGTTACGTGGCTCATCACTCTGGGGTGTGGAGTCGCCAAAAAACCA
 TCTCGGACCCGGAGGGCTTCTGCAGGCGTCGCTGAAGGATGGGGTGGTCTCTGCAGGCTGCTGGAGCG
 CCTGCTCCCCGGGACCATCGAGAAAGTCTACCCGAGCCCGGAGCGAGAGCGAGTGCCTGAGCAACATC
 CGCGAGTTCCTGCGCGGCTGCGGGCTTCCCTGCGGCTGGAGCTCCTGTTTCTCCTTCCCAGCCTCCTC
 AGCATCTGGTAACCACCATTTCTTGTCTGCTTCTACGTTTGTGCAAATGATTTGTATCAGGGGCAGAA
 TTTTAAACAAGTCTCAGTTCCTTAGTGACTCTAAATAAAGTAACAGCAGACATCGGGCTGGGGAGTGAC
 TCCGTGTGTGCCCGCCCTCGTCTACCGCATAAAGTCTTTTACTCCCTGGATCACAGTCTTTCGACA
 CTCGGACTTCAAACCTGTTCCAGGGCCAGTATCGGAGTTTGGACATGACCGATAATAGCAACAATCAACT
 GGTAGTAAGAGCAAAGTTAACTTCCAGCAGACCAATGAGGACGAGCTTTCCTTCTCAAAGGAGACGTC
 ATCCATGTCAACCGTGTGGAAGAGGGAGGCTGGTGGGAGGGCACACTCAACGGCCGACCGGCTGGTTCC
 CCAGCAACTACGTGCGCGAGGTCAAGGCCAGCGAGAAGCCTGTGTCTCCAAATCAGGAACACTGAAGAG
 CCCTCCAAAGGATTTGATACGACTGCCATAAAACAAAGCTATTACAATGTGGTGTACAGAATATTTTA
 GAAACAGAAAAATGAATATTCTAAAGAACTTCAGACTGTGCTTTCACCGTACCTACGGCCATTGCAGACCA
 GTGAGAAGTTAAGTTCAGCAAACATTTTCATATTTAATGGGAAATCTAGAAGAAATATGTTCTTCCAGCA
 AATGCTCGTACAGTCTTTAGAAGATGCACCAAGTTGCCGAAGCTCAGCAGAGAGTCCGAGGCTGCTTT
 TTAACCTGATGCCACAGATGAAAACCTGTACCTCACGATTTGTGCAAATCACCTTCTGCAGTGAATG
 TCCTCACGGAACACAGTGAGGAGTTGGGGAGTTCATGGAGACCAAAGGTGCCAGCAGCCCTGGGATTCT
 CGTGCTGACCACGGCCCTGAGCAAACCTTTCATGCGCCTGGATAAATACCTACGCTGCTCAAAGAGCTC
 GAGAGACACATGGAGGATTATCATAACAGATAGACAAGATATTCAAAAATCCATGGCTGCCTTCAAACCC
 TTTAGCCCAATGTCAAGAAGTCCGGAAGAGGAAAGAGCTTGGAGTGCAGATCCTGACGGAAGCCATCCG
 GAACTGGGAGGGCGATGACATTAACCTCTGGGCAACGTCACCTACATGTCCAGGCTCCTGATTAGTGT
 GCCGGAAGTGAGGAAAAGATGAAAGATATCTTACTCTTCCAAATGTTTTGCTAATGTTGTCTGCCA
 GTCCTAGGATGAGTGGCTTATCTATCAGGAAAGCTTCAACGACAGGAATGACAATCACAAAGCTTGA
 GGACAGTGAATAATAGAAAATGCATTTGAAATATCAGGGAGCATGATTGAGCGGATATTAGTGTCTGTC
 AACACCAGCAGGATCTGCAGGAATGGGTGGAGCACCTACAGAAGCAAACGAAGTCCAGTCTGTGGGAA
 ACCCCACCATAAAGCCTATTAGTGCATCTCATACCCTCCCCTCCCACCCGGTCACTCCGTCCAGCAA
 GCACGCAGACAGCAAGCCCGCGCGCTGACGCCCGCTACCACACGCTGCCCCACCCCTCCCACCACGGC
 ACCCCGCACACCACCATCAACTGGGGACCCCTGGAGCCTCCGAAAACACCAAGCCCTGGAGCCTGAGCT
 GCCTGCGGCCCGCCTCCCCTCCGGCCCTCAGCTGCTCTCTGCTACAAGGAGGATCTTAGTAAGAGCCC
 TAAGACCATGAAAAAGCTGCTGCCAAGCGCAAACCTGAACGGAAGCCTTCAGATGAGGAGTTCGCGTCC
 CGGAAAAGCACAGCTGCTTTGGAAGAAGATGCTCAGATTCTGAAAGTCATTGAAGCTTACTGCACCAGCG
 CAAAAACAAGGCAAACTCAATTCAACATGGCAAGGCACTGACCTGATGCATAATCACGCTTTGGCTGA
 TGATGACCAACCAAGCCTAGACTCCCTGGGGCGTCGCAGTAGCCTTTCTCGTTTGGAGCCTTCAGACCTC
 TCGGAAGACTCTGACTATGACAGTATATGGACAGCCCATAGTTACAGAATGGGTTCTACATCTCGTAAGA
 GCTGTTGCTCATATATCTCTCACCAGAAC

ACGCGTACGCGGCCGCTCGAGCAGAACTCATCTCAGAAGAGGATCTGGCAGCAAATGATATCTGGATT
 ACAAGGATGACGACGATAAGGTTTAA

Protein Sequence: >RC226174 representing NM_001113511
Red=Cloning site Green=Tags(s)

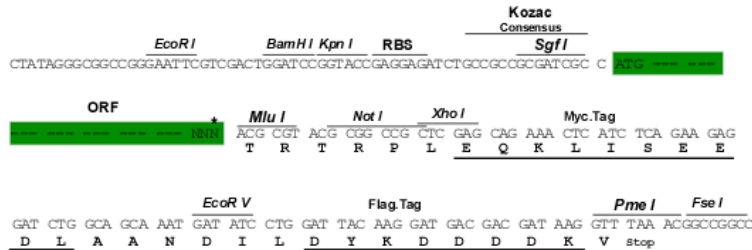
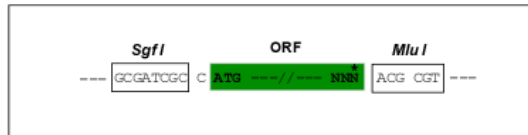
MNSAEQVTWLITLGVLESPKKTISDPEGFLQASLKDGVVLCRLLERLLPGTIEKVYPEPRSESECLSNIREFLRGGASLRLELLFPPSQPPQHLVTTILLASTFDANDLYQGQNFNKVLSLVTLNKVTADIGLGSDSVCARPSSSHRIKSFDSLGSQSLHTRTSKLFQGGYRSLDMTDNSNNQLVVRAKFNFQQTNEDELSFSKGDV
IHVTRVEEGGWEGTLNGRTGWFPSSNYVREVKASEKPVSPKSGTLKSPPKGFDTTAINKSYYNVVLQNIL
ETENEYSKELQTVLSTYLRPLQTSEKLSSANISYLMGNLEEICSFQQMLVQSLEECKLPEAQQRVGGCF
LNLMPQMKTLYLTYCANHPSAVNVLTEHSEELGEFMETKGASSPGILVLTGGLSKPFMRDLKYPTLLKEL
ERHMEDYHTDRQDIQKSMAAFKNLSAQCCQEVRRKRELELQILTEAIRNWEQDDIKTLGNVTYMSQVLIQC
AGSEEKNERYL LFPNVLLMLSASPRMSGFIYQGKLPPTGMTITKLESENHRNAFEISGSMIERILVSC
NNQQDLQEWVEHLQKQTKVTSVGNPTIKPHSVPSHTLPSHPVTPSSKHADSKPAPLTPAYHTLPHPSHHG
TPHTTINWGPLEPPKTPKPWSLSCLRPAPPLRPSAALCYKEDLSKSPKTMKLLPKRKPERKPSDEEFAS
RKSTAAL EEDAQILKVEIAYCTSAKTRQTLNSTWQGTDLMHNHVLADDDQPSLDSLGRSSLSRLEPSDL
SESDYDSIWT AHSYRMGSTSRKSCCSYISHQN

TRTRPLEQKLI SEEDLAANDILDYKDDDDKV

Restriction Sites: Sgfl-MluI

Cloning Scheme:

Cloning sites used for ORF Shutting:



* The last codon before the Stop codon of the ORF

ACCN: NM_001113511

ORF Size: 2409 bp

OTI Disclaimer: The molecular sequence of this clone aligns with the gene accession number as a point of reference only. However, individual transcript sequences of the same gene can differ through naturally occurring variations (e.g. polymorphisms), each with its own valid existence. This clone is substantially in agreement with the reference, but a complete review of all prevailing variants is recommended prior to use. [More info](#)
OTI Annotation: This clone was engineered to express the complete ORF with an expression tag. Expression varies depending on the nature of the gene.

Components: The ORF clone is ion-exchange column purified and shipped in a 2D barcoded Matrix tube containing 10ug of transfection-ready, dried plasmid DNA (reconstitute with 100 ul of water).

Reconstitution Method:

1. Centrifuge at 5,000xg for 5min.
2. Carefully open the tube and add 100ul of sterile water to dissolve the DNA.
3. Close the tube and incubate for 10 minutes at room temperature.
4. Briefly vortex the tube and then do a quick spin (less than 5000xg) to concentrate the liquid at the bottom.
5. Store the suspended plasmid at -20°C. The DNA is stable for at least one year from date of shipping when stored at -20°C.

RefSeq: [NM_001113511.2](#)

RefSeq ORF: 2412 bp

Locus ID: 8874

UniProt ID: [Q14155](#)

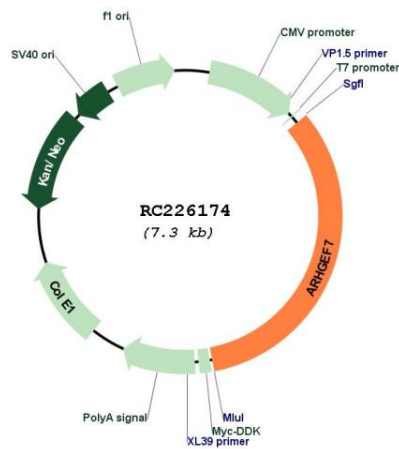
Cytogenetics: 13q34

Protein Pathways: Regulation of actin cytoskeleton

MW: 89.8 kDa

Gene Summary: This gene encodes a protein that belongs to a family of cytoplasmic proteins that activate the Ras-like family of Rho proteins by exchanging bound GDP for GTP. It forms a complex with the small GTP binding protein Rac1 and recruits Rac1 to membrane ruffles and to focal adhesions. Multiple alternatively spliced transcript variants encoding different isoforms have been observed for this gene. [provided by RefSeq, Mar 2016]

Product images:



Circular map for RC226174