

Product datasheet for **RC226167**

SUN1 (NM_001130965) Human Tagged ORF Clone

Product data:

Product Type:	Expression Plasmids
Product Name:	SUN1 (NM_001130965) Human Tagged ORF Clone
Tag:	Myc-DDK
Symbol:	SUN1
Synonyms:	UNC84A
Mammalian Cell Selection:	Neomycin
Vector:	pCMV6-Entry (PS100001)
E. coli Selection:	Kanamycin (25 ug/mL)



[View online »](#)

ORF Nucleotide Sequence:

>RC226167 representing NM_001130965
 Red=Cloning site Blue=ORF Green=Tags(s)

TTTTGTAATACGACTCACTATAGGGCGGCCGGAATTCGTCGACTGGATCCGGTACCGAGGAGATCTGCC
 GCC**CGATCGCC**

ATGGATTTTTCTCGGCTTACATGTACAGTCTCCCAAGTGTGTGCCGAGAACACGGGCTACACGTATG
 CGCTCAGTTCAGCTATTCTTCAGATGCTCTGGATTTTGAGACGAGACAAAATTGGACCTGTATTGA
 TTCTCCACGGATGTCCCGCGTAGTTTGCCTGGCCACGACAGCATGCACCCTGGGGATGGTGAGGCT
 GTGGGTGCCGACAGCGGACCAGCAGCGTGTCTCCCTGAAGAACCAGCGGCCAGAACAAAAACAGC
 GCAGAAGCACAACAAATCAGCTTTTAGTATCAACCACGTGTCAAGGCAGGTACAGTCTCTGGCGTCA
 CCACGGCGGCACTGTGAGCTGCAGGATGCTGTGACTCGACGGCCTCTGTATTGGACGAGTCTGGATT
 CGTGAACAGACCACAGTGGACACTTCTGGGTCTTGATGATGATGGTATCTTAAAGTGGAAATAAG
 CTGCCATTAGGGAAACGGGATGTGGAGCCCGCCGCCACCCGCGCACACGGCTTCTCTGCAGCAA
 CTGCAGCATGCTGTCCGAGCGCAAGGACGTGCTCACGGCGCACCCCGCGCCCCGGCCGTGTGAGA
 GTTATTCTAGGGACAGGAATCAAAAATGTTACTTCTTGTGCTGAGATTCTGCGCAGGATCCGAGCTGTGG
 GCCAGGCTGTGTCCAGGACGGCGTGGTCCGCCCTTTGGCTGGCCGTGGTGTCTCCAGGAAAGCAGCCTC
 TGGAGTGTCTGGTGGCTGGGATTGGATGGTACCAGTTTGTACTTTGATTTCTTGGCTGAATGTGTTT
 CTCTTACCAGGTGCCTTCGAAACATCTGCAAGTTTTAGTCTTGCTCATCCCACCTTCTCTTTTACTAG
 CAGGTCTCTCCTACGGGGCCAGGGCAATTTCTTTTCGTTCTTGCCCGTGTGAACTGGGCAAGCATGCA
 TAGAACACAGCGGGTGGATGACCCCAAGGACGTGTTAAACCCACGACTTCTCGCTGAAGCAGCCTCTG
 CAGGGTGACAGTGAGGCTTTCCGTGGCATTGGATGAGTGGCGTGGAGCAGCAGGTGGCCTCTGTCTG
 GACAGTGCCACCACCATGGTGAAGTCTCCGAGAGCTGACCACTTGTCTACAGAAGCTGCAGGCTCGGGT
 GGACCAGATGGAAGGCGCGCTGCCGGGCGTCAAGTTCGGTCAAGAGCAGCTGTGGGACAGCCCCGAGG
 GAGACTGACTTTATGGCCTTTCACCAAGAACATGAAGTGCATGTACACTTGGAAATATTCTGGGAA
 AACTGAGAGAAAAATCTGAGGCCATCCAGAAGGAACTAGAACAGACCAAGCAAAAAACAATCAGTGCAGT
 TGGTGAGCAGCTCCTGCCACAGTCCAGCAGCTCCAGCTGGAGCTGGATCAGCTAAAGTCAAGAGCTGTC
 AGCTGGCGACACGTGAAGACCGGCTGTGAGACAGTGGATGCCGTACAAGAAAGAGTGGACGTGCAAGTCA
 GAGAAATGGTGAACCTCTGTTTTCCGAAGATCAGCAAGGCGTCTCTGGAACAGCTGCTGCAGAGGTT
 CTCATCACAGTTTGTGAGCAAAGGCGACTTGCAGACGATGCTGCGAGACCTGCAGCTGCAGATCCTGCGG
 AACGTCACCCACCAGTTTCCGTGACCAAGCAGTCCCAACCTCAGAAGCCGTGGTGTCTGCTGTGAGCG
 AGGCGGGGCGTCTGGAATAACAGAGGCGCAAGCAGTGCATCGTGAACAGCGCCTTGAAGCTGTATTC
 CCAAGATAAGACCGGGATGGTGGACTTTGCTCTGGAATCTGGTGGTGGCAGCATCTTGAGTACTCGCTGT
 TCTGAACTTACGAAACCAAAACGGCGCTGATGAGTCTGTTGGGATCCCCTGTGGTACTTCTCGCAGT
 CCCCAGCGGTGGTCCAGCCTGACATTTACCCCGGTAAGTGTGGGATTTAAAGGCTCCAGGGGTA
 CCTGGTGGTGGGCTCTCCATGATGATCCACCCAGCCGCTTCACTCTGGAGCAGTCCCTAAGACGCTG
 TCGCCAACAGGCAACATCAGCAGCGCCCCAAGGACTTCGCCGTCTATGGATTAGAAAATGAGTATCAGG
 AAGAAGGGCAGCTTCTGGGACAGTTCACGTATGATCAGGATGGGAGTGCCTCCAGATGTTCCAGGCCCT
 GAAAAGACCCGACGACACAGCTTTCCAAATAGTGAACCTCGGATTTTTTCTAACTGGGGCCATCCTGAG
 TATACCTGTCTGATCGGTTCAAGTTCATGGCGAACCTGTCAAG

ACGCGTACGCGGCCGCTCGAGCAGAACTCATCTCAGAAGAGGATCTGGCAGCAAATGATATCCTGGATT
 ACAAGGATGACGACGATAAGGTTTAA

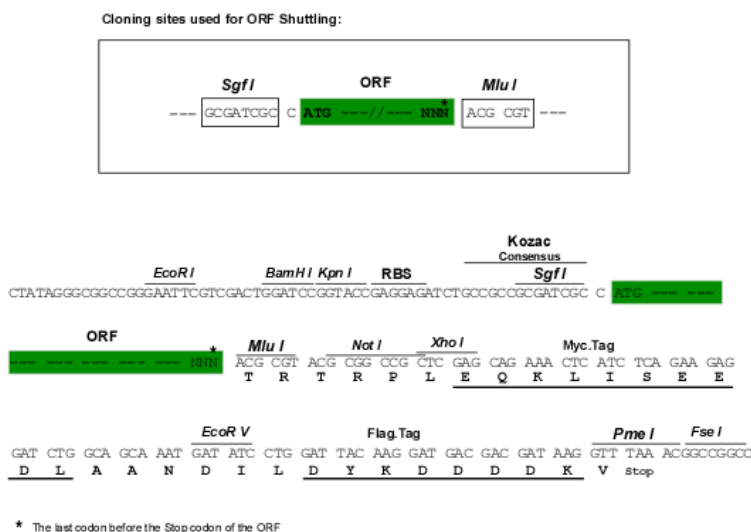
Protein Sequence: >RC226167 representing NM_001130965
Red=Cloning site Green=Tags(s)

MDFSRLHMYSPPQCVPENTGYTYALSSSYSSDALDFETEHLDPVFDSPRMSRRSLRLATTACTLGDGEA
VGADSGTSSAVSLKNRAARTTKQRRSTNKSAFSINHVSQVTS SSGVSHGGTVSLQDAVTRRPPVLDESWI
REQTTVDHFWGLDDDGLKGGNKAIIQNGDVGAAAATAHNGFSCSNCSMLSERKDVLTAHPAAGPVS
VYSRDRNQKCYFLLQILRRIGAVGQAVSRTAWSALWLA VVAPGKAASGVFWLGIWYQFVTLISWLVN
LLTRCLRNICFLVLLIPLFLLLAGLSLRGQGNFFSFLPVLN WASHMRTQRVDDPQDVFKPTTSRLKQPL
QGDSEAFPWHWMSGVEQQVASLSGQCHHHGENLREL TLLQKLQARVDQMEGGAAGPSASVRDAVGQPPR
ETDFMAFHQEHVMSHLEDILGKLREKSEAIQKELEQTKQKTI SAVGEQLLPTVEHLQLELDQLKSELS
SWRHVKTGCETVDAVQERVDVQVREMVKLLFSE DQQGGSLEQLLQRFSSQFVSKGDLQTMLRDLQLILR
NVTHHVSVTKQLPTSEAVVSAVSEAGASGITEA QARAI VNSALKLYSQDKTGMVDFALESGGGSILSTRC
SETYETKTALMSLFGIPLWYFSQSPRVVIQPD IYPGNCWAFKGSQGYLVVRLSMMIHPAAFTLEHIPKTL
SPTGNISSAPKDFAVYGLENEYQEEGQLLGQFTYDQD GESLQMFQALKRPDDTAFQIVELRIFSNWGHPE
YTCLYRFRVHGEPVK

TRTRPLEQKLI SEEDLAANDILDYKDDDDKV

Chromatograms: https://cdn.origene.com/chromatograms/mk8006_c12.zip

Restriction Sites: Sgfl-Mlul

Cloning Scheme:


ACCN: NM_001130965

ORF Size: 2355 bp

OTI Disclaimer: The molecular sequence of this clone aligns with the gene accession number as a point of reference only. However, individual transcript sequences of the same gene can differ through naturally occurring variations (e.g. polymorphisms), each with its own valid existence. This clone is substantially in agreement with the reference, but a complete review of all prevailing variants is recommended prior to use. [More info](#)

OTI Annotation: This clone was engineered to express the complete ORF with an expression tag. Expression varies depending on the nature of the gene.

Components: The ORF clone is ion-exchange column purified and shipped in a 2D barcoded Matrix tube containing 10ug of transfection-ready, dried plasmid DNA (reconstitute with 100 ul of water).

Reconstitution Method:

1. Centrifuge at 5,000xg for 5min.
2. Carefully open the tube and add 100ul of sterile water to dissolve the DNA.
3. Close the tube and incubate for 10 minutes at room temperature.
4. Briefly vortex the tube and then do a quick spin (less than 5000xg) to concentrate the liquid at the bottom.
5. Store the suspended plasmid at -20°C. The DNA is stable for at least one year from date of shipping when stored at -20°C.

Note: Plasmids are not sterile. For experiments where strict sterility is required, filtration with 0.22um filter is required.

RefSeq: [NM_001130965.3](#)

RefSeq ORF: 2358 bp

Locus ID: 23353

UniProt ID: [O94901](#)

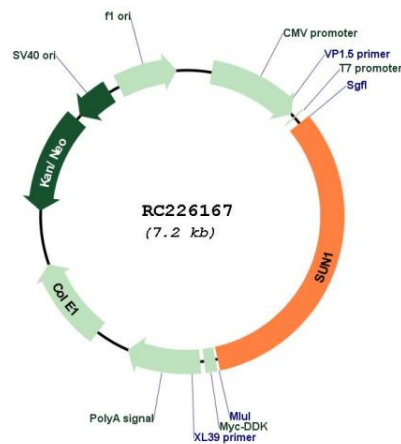
Cytogenetics: 7p22.3

Protein Families: Transmembrane

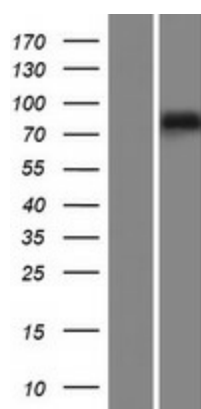
MW: 86.9 kDa

Gene Summary: This gene is a member of the unc-84 homolog family and encodes a nuclear envelope protein with an Unc84 (SUN) domain. The protein is involved in nuclear anchorage and migration. Alternatively spliced transcript variants have been described. [provided by RefSeq, Jan 2019]

Product images:



Circular map for RC226167



Western blot validation of overexpression lysate (Cat# [LY427327]) using anti-DDK antibody (Cat# [TA50011-100]). Left: Cell lysates from untransfected HEK293T cells; Right: Cell lysates from HEK293T cells transfected with RC226167 using transfection reagent MegaTran 2.0 (Cat# [TT210002]).