

Product datasheet for **RC226164**

HHIPL1 (NM_001127258) Human Tagged ORF Clone

Product data:

Product Type:	Expression Plasmids
Product Name:	HHIPL1 (NM_001127258) Human Tagged ORF Clone
Tag:	Myc-DDK
Symbol:	HHIPL1
Synonyms:	KIAA1822; UNQ9245
Mammalian Cell Selection:	Neomycin
Vector:	pCMV6-Entry (PS100001)
E. coli Selection:	Kanamycin (25 ug/mL)



[View online »](#)

ORF Nucleotide Sequence:

>RC226164 representing NM_001127258
 Red=Cloning site Blue=ORF Green=Tags(s)

TTTTGTAATACGACTCACTATAGGGCGGCCGGAATTCGTCGACTGGATCCGGTACCGAGGAGATCTGCC
 GCC**CGATCGCC**

ATGGCCCGGGCCAGGGCCGGGGCGCTGCTGGCGCTTTGGGTGCTCGGGGCCCGCCGCATCCGCAGTGCC
 TGGACTTCAGGCCGCCCTTCCGGCCGACGACGCCGCTGCGCCTCTGCGCGCAGTACTCGGACTTCGGCTG
 CTGCGATGAGGGGCGCGACGCCGAGCTGACCCGCCGCTTCTGGGCCCTGGCGAGCCGCTGGACGCCGCC
 GAGTGGGCCGCGTGCGCCGGTACGCGAGGGACCTGCTGTGCCAGGAATGCTCGCCGATGCAGCCCACC
 TCTATGACGCCGAGGACCATTACGCCCTGCGCACGGTGCCCGGGCTCTGCCAGGATTACTGCCTGGA
 CATGTGGCATAAGTGCCGGGGCTGTTCCGTCACTGTCAACTGACCAGGAGCTCTGGGCGCTGGAGGGC
 AACCTTGCAGGTTCTGCCGCTACCTGTCCCTGGATGACACGGACTACTGCTTCCCTTACCTGCTGGTCA
 ACAAGAACCTCAACTCAAACCTGGGCCAGTGGTAGCCGATGCCAAGGGTGCCTGCAGCTGTGCCTGGA
 GGAGTGGCCAACGGGCTGCGCAACCCCGTGGCCATGGTCCATGCCAGGGATGGCACCCACCGCTTCTTC
 GTGGCCGAGCAGGTGGGGCTGGTGTGGGCTACCTGCCCGACCGCTCGAGGCTGGGGAAGCCTTTCCTGA
 ACATCAGCCGGGTGGTGCTCACCTCGCCCTGGGAGGGTACGAGCGTGGCTTCTGGGCATTGCCTTCCA
 CCCAGCTTCCAGCACAACCGCAGGCTCTACGTCTACTACTCAGTGGGTATCCGCAGCAGTGAAGGATC
 CGCATCAGCGAGTTCAGAGTCTCCGAGGATGACGAGAACGCCGTGGACCACAGCTCTGAGAGGATAATCC
 TGGAGGTCAAAGAACCAGCCTCAAACCACAACGGGGGCCAGTGCCTTTCGGGGATGACGGGTACCTCTA
 CATCTTCACTGGAGATGGCGGGATGGCCGAGACCCCTTTGGGACATTTGGAAATGCCAAAAACAAGTGC
 GCGCTGCTGGGCAAGGTGCTGCGCATCGACGTGGACCGTAAGGAGCGCGGCTGCCCTACGGCATCCCGC
 CCGACAACCCGTTCTGGGGGACCCCGCGGCGCAGCCGAGGTCTACGCCCTGGGCGTGGCAACATGTG
 GCGCTGCTCCTTCGACCGTGGCGACCCCTCCTCGGGCACTGGCCGCGGGCGCTTCTGCGGCGACGTG
 GGCCAGAACAAGTTCGAGGAGGTGGACGTGGTGGAGCGCGGCGCAACTATGGCTGGCGCGCGCGGAAG
 GGTTCGAGTGCTACGACCGCAGCCTGTGCGCCAACACCTCTCTCAATGACTTGCTGCCGATTTTCGCTA
 CCCGCACACGGTTGGCAAGTCGGTACAGGGGGCTACGTGTACCGGGGCTGCGAGTACCCCAACCTGAAC
 GGCCTCTACATTTTGGGATTTTCATGAGCGGGCGTGTGATGTCCCTCCAAGAGAACCCAGGGACAGGCC
 AGTGGCAGTACAGTGAGATCTGCATGGGCCACGGCCAGACCTGTGAGTTCACAGGCTCATCAACAATA
 CTACCCGTACATCATCTCCTTCGGGGAGGACGAGGCCGGGAGCTGTACTTCATGTGCAGGGGAGCCG
 AGTGCCACAGCTCCACGGGAGTTGTCTACAAAATAATTGACGCATCCAGCGGGCACCACCTGGCAAAT
 GTCAGATCCAGCCTGCTCAGGTGAAGATCAGAAGCCGTCTCATCCCTTTGTGCCAAAGAAAAGTTCAT
 CCCGAAGACACGGAGCACCCCGGGCTACAGCGCGGGCGCCACGCGGGCGCCCGCCGAGGGCGCCCC
 ACGGCCGCTCCCCCGGCCAACCCCGGGCCAGCGCGGCCACCCAGCAGCCAGGGAGCCGGAGGGGCG
 GCGGGCGCGGGGGGGCGGCTGAACCTCGGCGAGCCGGCGTTCGGGATGGCGAGGTGCGCCTGGTGGC
 GCCCGGGGCTGAGCTCTGGCAGCGGGCGCGTGGAGGTGTTCTGGGCGGACGCTGGGGCACCGTGTGC
 GACGACTCCTGGAACATCAGCGGCGCCCGCTGTGTGTCGCCAGCTGGGTTTGCCTACGCCGTGCGCG
 CCGTCAAGAGAGCCGAGTTCGGCCAGGGCGGCTCGTGCCATTCTGCTGGACGATGTGCGCTGCGCGG
 CTGGGAGCGGAACCTGCTGGAGTGCCAGCACAACGGCGTGGGCACCCACAACCTGCCAGCAGCAGGAGT
 CGGGCGTCTGTGCAGCCACAGAACCCCGACCTG

ACGCGTACGCGGCCGCTCGAGCAGAACTCATCTCAGAAGAGGATCTGGCAGCAAATGATATCCTGGATT
 ACAAGGATGACGACGATAAGGTTTAA

Protein Sequence: >RC226164 representing NM_001127258
Red=Cloning site Green=Tags(s)

MARARAGALLALWVLGAAHPQCLDFRPPFRPTQPLRLCAQYSDFGCCDEGRDAELTRRFWALASRVDAAEWAACAGYARDLLCQECSPYAAHLYDAEDPFTPLRTVPGLCQDYCLDMWHKCRGLFRHLSTDQELWALEGNLARFCRYLSLDDTDYCFPYLLVNKNLNSNLGHVVADAKGCLQLCLEEVANGLRNPVAMVHARDGTHRFFVAEQVGLVWAYLPDRSRLGKPFLLNISRVVLTSPWEGDERGFLGIAFHPSFQHNRRLYVYYSVVGIRSEWIRISEFRVSEDDENAVDHSSERIILEVKEPASNHGGQLLFGDDGYLYIFTGDGGMAGDPFGTFGNAQNKSEALLGKVLRIDVDRKERGLPYGIPDPNPFVGDPAAQPEVYALGVRNMWRCSFDRGDPSSGTGRGRLFCGDVGQNKFEEDVVERGGNYGWRAREGFECYDRSLCANTSLNDLLPIFAYPHTVGKSVTGGYVYRGCEYPNLNGLYIFGDFMGRMLSLQENPGTQWQYSEICMGHGQTCEFPGLINNYPIYIISFGEDEAGELYFMSTGEP SATAPRGVVKIIDASRRAPPGKCQIQPAQVKIRSRLIPFVPKEKFI PKTRSTPRPTARAPTRAPRRGRP TAAPPAPTPRPARPTQQPGSRRGGRRRRLNSASRAFRDGEVRLVRPAGLSSGSRVEVFVGGRWGTVC DDSWNIISGAAVCRQLGFAYAVRAVKRAEFGQGGSLPILLDDVRCAGWERNLLECGHNGVGTNCEHDED AGVVCSHQNPDL

TRTRPLEQKLI SEEDLAANDILDYKDDDDKV

Chromatograms: https://cdn.origene.com/chromatograms/mk8034_e11.zip

Restriction Sites: SgfI-MluI

Cloning Scheme:


ACCN: NM_001127258

ORF Size: 2346 bp

OTI Disclaimer: The molecular sequence of this clone aligns with the gene accession number as a point of reference only. However, individual transcript sequences of the same gene can differ through naturally occurring variations (e.g. polymorphisms), each with its own valid existence. This clone is substantially in agreement with the reference, but a complete review of all prevailing variants is recommended prior to use. [More info](#)

OTI Annotation: This clone was engineered to express the complete ORF with an expression tag. Expression varies depending on the nature of the gene.

Components: The ORF clone is ion-exchange column purified and shipped in a 2D barcoded Matrix tube containing 10ug of transfection-ready, dried plasmid DNA (reconstitute with 100 ul of water).

Reconstitution Method:

1. Centrifuge at 5,000xg for 5min.
2. Carefully open the tube and add 100ul of sterile water to dissolve the DNA.
3. Close the tube and incubate for 10 minutes at room temperature.
4. Briefly vortex the tube and then do a quick spin (less than 5000xg) to concentrate the liquid at the bottom.
5. Store the suspended plasmid at -20°C. The DNA is stable for at least one year from date of shipping when stored at -20°C.

RefSeq: [NM_001127258.3](#)

RefSeq ORF: 2349 bp

Locus ID: 84439

UniProt ID: [Q96JK4](#)

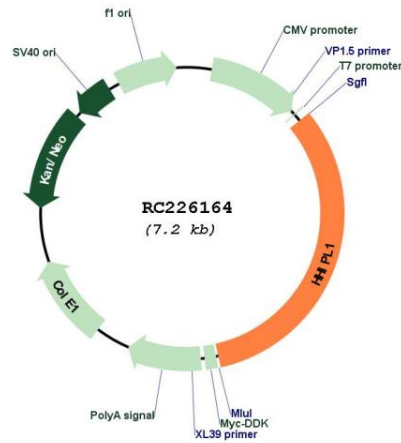
Cytogenetics: 14q32.2

Protein Families: Druggable Genome

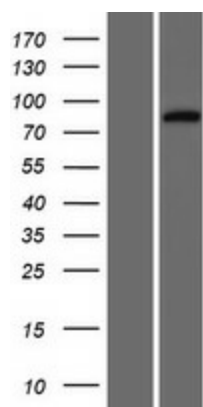
MW: 86.6 kDa

Gene Summary: This gene encodes a protein that belongs to the glucose/sorbose dehydrogenase family. The encoded protein also contains a domain that binds folate and reduced folic acid derivatives. [provided by RefSeq, Jul 2016]

Product images:



Circular map for RC226164



Western blot validation of overexpression lysate (Cat# [LY426741]) using anti-DDK antibody (Cat# [TA50011-100]). Left: Cell lysates from untransfected HEK293T cells; Right: Cell lysates from HEK293T cells transfected with RC226164 using transfection reagent MegaTran 2.0 (Cat# [TT210002]).