

## Product datasheet for **RC226155**

### TLE3 (NM\_001105192) Human Tagged ORF Clone

#### Product data:

Product Type:	Expression Plasmids
Product Name:	TLE3 (NM_001105192) Human Tagged ORF Clone
Tag:	Myc-DDK
Symbol:	TLE3
Synonyms:	ESG; ESG3; GRG3; HsT18976
Mammalian Cell Selection:	Neomycin
Vector:	pCMV6-Entry (PS100001)
E. coli Selection:	Kanamycin (25 ug/mL)



[View online »](#)

**ORF Nucleotide Sequence:**

>RC226155 representing NM\_001105192  
 Red=Cloning site Blue=ORF Green=Tags(s)

TTTTGTAATACGACTCACTATAGGGCGGCCGGGAATTCGTCGACTGGATCCGGTACCGAGGAGATCTGCC  
 GCC**CGGATCGCC**

ATGTATCCGCAGGGCAGACATCCGGCTCCCATCAACCCGGGCAGCCGGATTTAAATTCACGGTGGCTG  
 AGTCTTGTGACAGGATCAAAGACGAATTCAGTTCCTGCAAGCTCAGTATCACAGCCTCAAAGTGGAGTA  
 CGACAAGCTGGCAAACGAGAAGACGGAGATGCAGCGCCATTATGTGATGTACTATGAGATGTCTATGGC  
 TTGAACATTGAAATGCACAAGCAGACAGAGATTGCGAAGAGACTGAACACAATTTAGCACAGATCATGC  
 CTTTCTGTGACAAGAGCACCAGCAGCAGGTGGCGCAGGCAGTGGAGCGCGCCAAGCAGGTACCATGAC  
 GGAGCTGAACGCCATCATCGGCAGCAGCAGCTCCAGGCGCAGCACCTCTCCATGCCACACACGGCCCC  
 CCGGTCCAGTTGCCACCCACCCGTCAGGTCTCCAGCCTCCAGGAATCCCCCAGTGACAGGGAGCAGCT  
 CCGGGCTGCTGGCACTGGGCGCCCTGGGCAGCCAGGCCCATCTGACGGTGAAGGATGAGAAGAACCACCA  
 TGAAGTGCATCACAGAGAGAGAGATCCAGTGCGAATAACTCTGTGTACCCTCGAAAGCCTCCGGGCC  
 AGTGAGAAAGCACCAGGGCTCTGCGGACTACAGCATGGAAGCCAAGAAGCGGAAGCGGAGGAGAAGGACA  
 GCTTGAAGCCGATACGACAGTGTGGAGACAAGAGTGTATCTGGTGGTGGATGTTTCCAATGAGGACCC  
 CGCAACGCCCCGGGTGAGCCCGGCACACTCCCCTCCTGAAAATGGGCTGGACAAGGCCCGTAGCCTGAAA  
 AAAGATGCCCCACCAGCCCTGCCTCGGTGGCCTCTTCCAGTAGCACACCTTCTCCAAGACCAAAGACC  
 TTGGTCATAACGACAAATCTCCACCCCTGGGCTCAAGTCCAACACACCAACCCCAAGGAACGACGCCCC  
 AACTCCAGGCACCAGCACGACCCAGGGCTCAGGTGATGCCGGGTAACCTCCGGGCATGGACCCGATA  
 GCCTCGGCTCTGCGCACGCCATCTCCATCACCAGTCCATGCGGCGCCCTTCGCCATGATGAGCCACC  
 ATGAGATGAACGGCTCCCTCACCAGTCCCTGGCGCCTACGCGGCCCTCCACAACATCCCACCCCAATGAG  
 CGCCGCCCGCTGCTGACAGCCGCTGCCTATGGCCGATCGCCAATGGTGAGCTTTGGAGCTGTTGGTTTT  
 GACCCCTACCCCCGATGCGGGCCACAGCCCTCCCCTCAAGCCTGGCCTCCATTCTGGAGGAAAACCAG  
 CGTACTCATTCCATGTGAGTGTGATGGGCAGATGCAGCCCGTGCCTTCCCCACGACGCCCTGGCAGG  
 CCCCAGCATCCCGAGGCACGCCCGGCAGATCAACACACTCAGCCACGGGAGGTGGTGTGTGCCGTGACC  
 ATCAGCAACCCACGAGGCACGTCTACACAGGTGGCAAGGGCTGCGTGAAGATCTGGGACATCAGCCAGC  
 CAGGCAGCAAGAGCCCCATCTCCAGTGGACTGCCTGAACAGGGACAATTACATCCGCTCCTGCAAGCT  
 GCTCCCTGATGGGCGACGCTCATCGTGGGCGGCAGGCCAGCACGCTCACCATCTGGGACCTGGCCTCG  
 CCCAGCCCCGCATCAAGGCCGAGTGCCTCGGCTCCCGCCTGTTATGCCCTGGCCATTAGCCCTG  
 ACGCCAAAGTCTGCTTCTCCTGCTGCAGCGATGGGAACATTGCTGTCTGGGACCTGCACAACCAGACCT  
 GGTGAGGCAGTTCAGGGCCACACAGATGGGGCCAGCTGCATAGACATCTCCATGATGGACCAAACTG  
 TGGACAGGGGGCCTGGACAACACGGTGCCTCCTGGGACCTGCGGGAGGGCCGACAGCTACAGCAGCATG  
 ACTTCACTTCCCAGATCTTCTCGTGGGCTACTGCCCCACTGGGAGTGGCTGGCTGTGGGCATGGAGAG  
 CAGCAAGTGGAGGTGCTGCACCACCAAGCCTGACAAGTACCAGTGCACCTGCACGAGAGCTGCGTG  
 CTCTCCCTCAAGTTCGCCTACTGCGCAAGTGGTTCGTGAGCACTGGGAAAGATAACCTTCTCAACGCT  
 GGAGGACGCCCTTATGGAGCCAGCATATTCAGTCTAAAGAATCCTCGTCTGTCTTGAGTTGTGACATTT  
 AGCGGATGACAAATACATTGTAACAGGCTCTGGTGACAAGAAGGCCACAGTTTATGAGGTATCTAC

**ACGCGT**ACGCGGCCGCTCGAGCAGAAACTCATCTCAGAAGAGGATCTGGCAGCAAATGATATCCTGGATT  
 ACAAGGATGACGACGATAAGGTTTAA

**Protein Sequence:** >RC226155 representing NM\_001105192  
 Red=Cloning site Green=Tags(s)

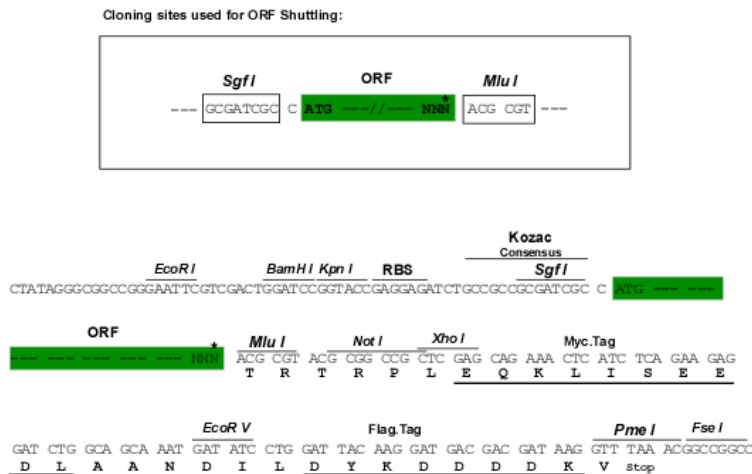
MYPQGRHPAPHQPGQPGFKFTVAESCDRIKDEFQFLQAQYHSLKVEYDKLANEKTEMQRHYVMMYEMS  
 YG LNIEMHKQTEIAKRLNTILAQIMPFLSQEHQQQVAQVERAKQVTMTLNAIIGQQQLQAQHLSHATHGP  
 PVQLPPHP SGLQPPGIPPVTGSSSGLLALGALGSQAHLTVKDEKNHHELDHREERESSANNVSVPSESLRA  
 SEKHRGSADYSMEAKKRKAEEKDSLRYDSDGDKSDDLVDVSNEDPATPRVSPAHSPPENGLDKARSLK  
 KDAPTSVASVSSSTPSSKTKDLGHNDKSTPGLKSNTPTRNDAPTPGTSTTPGLRSMGPKPPGMDPI  
 ASALRTPISITSSYAAPFAMMSHHEMNGSLTSPGAYAGLHNIPPMQMSAAAAAAAAAYGRSPMVSFGAVG  
 F DPHPPMRATGLPSSLASIPGGKPAYSFHVSADGQMOPVPPHFDALAGPGIPRHARQINTLSHGEVCAVT  
 ISNPTRHVYTGKGCVKIWDISQPGSKPISQLDCLNRDNYIRSKLLPDGRTLIVGGEASTLTIWDLAS  
 PTPRIKAELTSSAPACYALAI SPDAKVCFSCCSDGNI AVWDLHNQTLVRQFQGHTDGASCIDISHDGTKL  
 WTGGLDNTVRSWDLREGRQLQQHDFTSQIFSLGYCPTGEWLA VGMESSNVEVLHHTKPKDYQLHLHESCV  
 LSLKFAYCGKWFVSTGKDNLLNAWRTPYGASIFQSKESSVLSCDISADDKYIVTGSGDKKATVVEIY

TRTRPLEQKLI SEEDLAANDILDYKDDDDKV

**Chromatograms:** [https://cdn.origene.com/chromatograms/mk8104\\_a07.zip](https://cdn.origene.com/chromatograms/mk8104_a07.zip)

**Restriction Sites:** SgfI-MluI

**Cloning Scheme:**



\* The last codon before the Stop codon of the ORF

**ACCN:** NM\_001105192

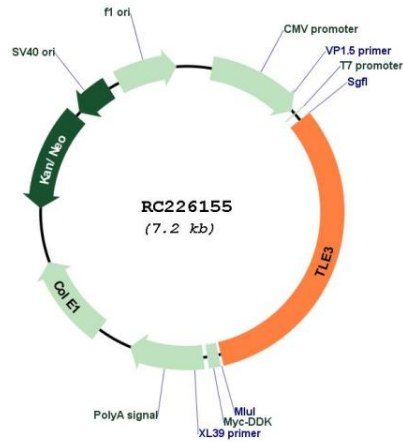
**ORF Size:** 2307 bp

**OTI Disclaimer:** The molecular sequence of this clone aligns with the gene accession number as a point of reference only. However, individual transcript sequences of the same gene can differ through naturally occurring variations (e.g. polymorphisms), each with its own valid existence. This clone is substantially in agreement with the reference, but a complete review of all prevailing variants is recommended prior to use. [More info](#)

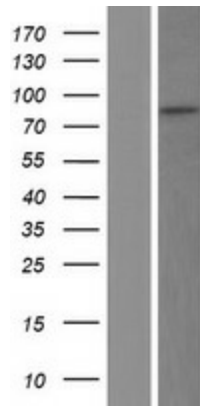
**OTI Annotation:** This clone was engineered to express the complete ORF with an expression tag. Expression varies depending on the nature of the gene.

<b>Components:</b>	The ORF clone is ion-exchange column purified and shipped in a 2D barcoded Matrix tube containing 10ug of transfection-ready, dried plasmid DNA (reconstitute with 100 ul of water).
<b>Reconstitution Method:</b>	<ol style="list-style-type: none"><li>1. Centrifuge at 5,000xg for 5min.</li><li>2. Carefully open the tube and add 100ul of sterile water to dissolve the DNA.</li><li>3. Close the tube and incubate for 10 minutes at room temperature.</li><li>4. Briefly vortex the tube and then do a quick spin (less than 5000xg) to concentrate the liquid at the bottom.</li><li>5. Store the suspended plasmid at -20°C. The DNA is stable for at least one year from date of shipping when stored at -20°C.</li></ol>
<b>RefSeq:</b>	<u>NM_001105192.3</u>
<b>RefSeq Size:</b>	5345 bp
<b>RefSeq ORF:</b>	2310 bp
<b>Locus ID:</b>	7090
<b>UniProt ID:</b>	<u>Q04726</u>
<b>Cytogenetics:</b>	15q23
<b>Protein Families:</b>	Transcription Factors
<b>MW:</b>	83.1 kDa
<b>Gene Summary:</b>	This gene encodes a transcriptional co-repressor protein that belongs to the transducin-like enhancer family of proteins. The members of this family function in the Notch signaling pathway that regulates determination of cell fate during development. Expression of this gene has been associated with a favorable outcome to chemotherapy with taxanes for ovarian carcinoma. Alternate splicing results in multiple transcript variants. Additional alternatively spliced transcript variants of this gene have been described, but their full-length nature is not known. [provided by RefSeq, Sep 2013]

Product images:



Circular map for RC226155



Western blot validation of overexpression lysate (Cat# [LY426218]) using anti-DDK antibody (Cat# [TA50011-100]). Left: Cell lysates from untransfected HEK293T cells; Right: Cell lysates from HEK293T cells transfected with RC226155 using transfection reagent MegaTran 2.0 (Cat# [TT210002]).