

Product datasheet for **RC226153**

ECE1 (NM_001113349) Human Tagged ORF Clone

Product data:

Product Type:	Expression Plasmids
Product Name:	ECE1 (NM_001113349) Human Tagged ORF Clone
Tag:	Myc-DDK
Symbol:	ECE1
Synonyms:	ECE
Mammalian Cell Selection:	Neomycin
Vector:	pCMV6-Entry (PS100001)
E. coli Selection:	Kanamycin (25 ug/mL)



[View online »](#)

ORF Nucleotide Sequence:

>RC226153 representing NM_001113349
 Red=Cloning site Blue=ORF Green=Tags(s)

TTTTGTAATACGACTCACTATAGGGCGGCCGGAATTCGTCGACTGGATCCGGTACCGAGGAGATCTGCC
 GCC**CGCATCGCC**

ATGGAGGCGCTGAGGGAGTCCGTGCTGCATTTGGCCTTGCAGATGTCGACGTACAAGCGGGCCACGCTGG
 ACGAGGAGGACCTGGTGGACTCGCTCTCCGAGGGCGACGCATACCCCAACGGCCTGCAGGTGAACCTCCA
 CAGCCCCCGAGTGGCCAGAGGTGCTGGCTGCACGGACCCAGGTGGAGAAGCGGCTGGTGGTGTGGTG
 GTACTTCTGGCGCAGGACTGGTGGCCTGCTTGGCAGCACTGGGCATCCAGTACCAGACAAGATCCCCCT
 CTGTGTGCTGAGCGAAGCTTGTGTCTCAGTGACCAGCTCCATCTTGAGCTCCATGGACCCACAGTGGA
 CCCCTGCCATGACTTCTCAGCTACGCCTGTGGGGCTGGATCAAGGCCAACCCAGTCCCTGATGGCCAC
 TCACGCTGGGGACCTTCAGCAACCTCTGGGAACACAACCAAGCAATCATCAAGCACCTCCTCGAAAAC
 CCACGGCCAGCGTGAGCGAGGCAGAGAGAAAGGCGCAAGTATACTACCGTGCCTGCATGAACGAGACCAG
 GATCGAGGAGCTCAGGGCAAACCTCTAATGGAGTTGATTGAGAGGCTCGGGGGCTGGAACATCACAGGT
 CCTGGGCCAAGGACAACCTCCAGGACACCTGCAGGTGGTACCGCCCACTACCGCACCTCACCTTCT
 TCTCTGTCTATGTCAGTGCCGATTCCAAGAACTCCAACAGCAACGTGATCCAGGTGGACCAGTCTGGCCT
 GGGCTTGGCCCTCGAGAGACTATTACCTGAACAAAACCTGAAAACGAGAAGGTGCTGACCGGATATCTGAAC
 TACATGGTCCAGCTGGGGAAGCTGCTGGGCGCGGGGACGAGGAGGCCATCCGGCCCCAGATGCAGCAGA
 TCTTGGACTTTGAGACGGCACTGGCCAACATCACCATCCACAGGAGAAGCGCGGTGATGAGGAGCTCAT
 CTACCACAAAGTGACGGCAGCCGAGCTGCAGACCTTGGCACCCGCCATCAACTGGTTGCCTTTTCTCAAC
 ACCATCTTCTACCCCGTGGAGATCAATGAATCCGAGCCTATTGTGGTCTATGACAAGGAATACCTTGAGC
 AGATCTCACTCTCATCAACACCACCGACAGATGCCTGCCTCAACAACATCATGATCTGGAACCTGGTGCG
 GAAAACAAGCTCCTTCTTACCAGCGCTTTCAGGACGCGGATGAGAAGTTCATGGAAGTCATGTACGGG
 ACCAAGAAGACCTGTCTTCTCGTGGAAAGTTTTCGCTGAGTGACACAGAAAACAACCTGGGCTTTGCGT
 TGGGCCCATGTTTGTCAAAGCAACCTTCGCCGAGGACAGCAAGAGCATAGCCACCGAGATCATCTGGA
 GATTAAGAAGGCATTTGAGGAAAGCCTGAGCACCTGAAGTGGATGGATGAGGAAACCCGAAAATCAGCC
 AAGGAAAAGGCCGATGCCATCTACAACATGATAGGATACCCCAACTTCATCATGGATCCCAAGGAGCTGG
 ACAAAAGTGTAAATGACTACACTGCAGTCCAGACCTCTACTTTGAAAATGCCATGCGGTTTTTCAACTT
 CTCATGGAGGGTCACTGCCGATCAGCTCAGGAAAGCCCCAACAGAGATCAGTGGAGCATGACCCCGCCC
 ATGGTGAACGCCTACTACTCGCCACCAAGAATGAGATTGTGTTCCGGCCGGGATCCTGCAGGCACCAT
 TCTACACAGCTCCTCACCAAGGCCTTAACTTTGGTGGCATAGGTGTGTCGTGGGCCATGAGCTGAC
 TCATGCTTTTGTGATCAAGGACGGGAGTATGACAAGGACGGGAACCTCCGGCCATGGTGGAAAGAACTCA
 TCCGTGGAGGCCTTCAAGCGTCAGACCGAGTGCATGGTAGAGCAGTACAGCAACTACAGCGTGAACGGGG
 AGCCGGTGAACGGGCGGCACACCCTGGGGGAGAACATCGCCGACAACGGGGGTCTCAAGGCGGCCTATCG
 GGCTTACCAGAACTGGGTGAAGAAGAACGGGGCTGAGCACTCGCTCCCCACCTGGGCTCACCAATAAC
 CAGCTCTTCTTCTGGGCTTTCACAGGTCTGGTCTCCGTCGACACCTGAGAGCTCCACGAAGGCC
 TCATCACCGATCCACAGCCCCCTCGCTTCCGGGTATCGGCTCCCTCTCAATTCCAAGGAGTCTC
 AGAACACTTCCGCTGCCACCTGGCTCACCCATGAACCCGCTCAAAAGTGCAGAGTCTGG

ACGCGTACGCGGCGCTCGAGCAGAAACTCATCTCAGAAGAGGATCTGGCAGCAAATGATATCCTGGATT
 ACAAGGATGACGACGATAAGGTTTAA

Protein Sequence: >RC226153 representing NM_001113349
 Red=Cloning site Green=Tags(s)

```
MEALRESVLHLALQMSTYKRATLDEEDLVDSLSEGDAYPNGLQVNFHSPRSGQRCWAARTQVEKRLVVLV
VLLAAGLVACLAALGIQYQTRSPSVCLSEACVSVTSSILSSMDPTVDPCHDFFSYACGGWIKANVPDGH
SRWGTFSNLWEHNQAIKHLLENSTASVSEAERKAQVYYRACMNETRIEELRAKPLMELIERLGGWNITG
PWAKDNFQDTLQVVTAHYRTSPFFSVYVSADSKNSNSNVIQVDQSGGLPSRDYYLNKTENEKVL TGYLN
YMQVLGKLLGGDEEAIRPQMQLIDFETALANITIPQEKRRDEELIYHKVTAELQTLAPAINWLPFLN
TIFYPVEINESEPIVVYDKEYLEQISTLINTTDRCLLNMYIWNLVKRTSSFLDQRFQDADEKFMEVYMG
TKKTCLPRWKFCVSDTENNLGFALGPMFVKATFAEDSKSIATEIILEIKKAFEESLSTLKWMEETRKSA
KEKADAIYNMIGYPNFI MPKELDKVFNDYAVPDL YFENAMRFFNF SWRVADQLRKAPNRDQWSMTPP
MVNAYYSPTKNEIVFPAGILQAPFYTRSSPKALNFGGIGVVVGHETHAFDDQGREYDKDGNLRPWKNS
SVEAFKRQTECMVEQYSNYSVNGEPVNGRHTLGENIADNGGLKAA YRAYQNWVKKNGAEHSLPTLGLTNN
QLFFLGFAQVWC SVRTPESSHEGLITDPHSPSRFRVIGLSNSKEFSEHFRCPGSPMPNPPHKCEVW
```

TRTRPLEQKLI SEEDLAANDILDYKDDDDKV

Chromatograms: https://cdn.origene.com/chromatograms/ja1126_c09.zip

Restriction Sites: Sgfl-MluI

Cloning Scheme:

Cloning sites used for ORF Shuttling:



* The last codon before the Stop codon of the ORF

ACCN: NM_001113349

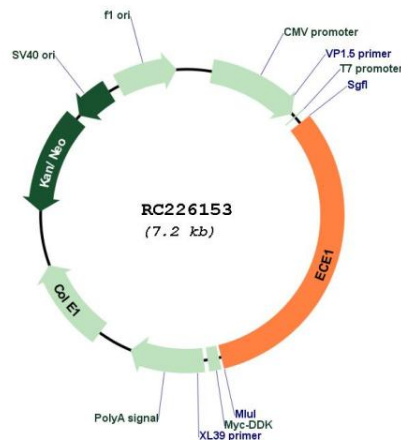
ORF Size: 2301 bp

OTI Disclaimer: The molecular sequence of this clone aligns with the gene accession number as a point of reference only. However, individual transcript sequences of the same gene can differ through naturally occurring variations (e.g. polymorphisms), each with its own valid existence. This clone is substantially in agreement with the reference, but a complete review of all prevailing variants is recommended prior to use. [More info](#)

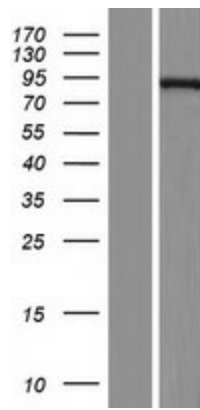
OTI Annotation: This clone was engineered to express the complete ORF with an expression tag. Expression varies depending on the nature of the gene.

Components:	The ORF clone is ion-exchange column purified and shipped in a 2D barcoded Matrix tube containing 10ug of transfection-ready, dried plasmid DNA (reconstitute with 100 ul of water).
Reconstitution Method:	<ol style="list-style-type: none"> 1. Centrifuge at 5,000xg for 5min. 2. Carefully open the tube and add 100ul of sterile water to dissolve the DNA. 3. Close the tube and incubate for 10 minutes at room temperature. 4. Briefly vortex the tube and then do a quick spin (less than 5000xg) to concentrate the liquid at the bottom. 5. Store the suspended plasmid at -20°C. The DNA is stable for at least one year from date of shipping when stored at -20°C.
RefSeq:	<u>NM_001113349.2</u>
RefSeq ORF:	2304 bp
Locus ID:	1889
UniProt ID:	<u>P42892</u>
Cytogenetics:	1p36.12
Protein Families:	Druggable Genome, Protease, Transmembrane
MW:	86.8 kDa
Gene Summary:	The protein encoded by this gene is involved in proteolytic processing of endothelin precursors to biologically active peptides. Mutations in this gene are associated with Hirschsprung disease, cardiac defects and autonomic dysfunction. Alternatively spliced transcript variants encoding different isoforms have been noted for this gene.[provided by RefSeq, Sep 2009]

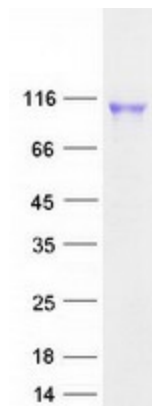
Product images:



Circular map for RC226153



Western blot validation of overexpression lysate (Cat# [LY426400]) using anti-DDK antibody (Cat# [TA50011-100]). Left: Cell lysates from untransfected HEK293T cells; Right: Cell lysates from HEK293T cells transfected with RC226153 using transfection reagent MegaTran 2.0 (Cat# [TT210002]).



Coomassie blue staining of purified ECE1 protein (Cat# [TP326153]). The protein was produced from HEK293T cells transfected with ECE1 cDNA clone (Cat# RC226153) using MegaTran 2.0 (Cat# [TT210002]).