

Product datasheet for **RC226152**

SATB1 (NM_001131010) Human Tagged ORF Clone

Product data:

Product Type:	Expression Plasmids
Product Name:	SATB1 (NM_001131010) Human Tagged ORF Clone
Tag:	Myc-DDK
Symbol:	SATB1
Synonyms:	DEFDA; KTZSL
Mammalian Cell Selection:	Neomycin
Vector:	pCMV6-Entry (PS100001)
E. coli Selection:	Kanamycin (25 ug/mL)



[View online »](#)

**ORF Nucleotide
Sequence:**

>RC226152 ORF sequence
 Red=Cloning site Blue=ORF Green=Tags(s)

TTTTGTAATACGACTCACTATAGGGCGGCCGGAATTCGTGCGACTGGATCCGGTACCGAGGAGATCTGCC
 GCC**CGCATCGCC**

ATGGATCATTGAAACGAGCAACTCAGGGGAAAGAACATTTCAGAAATGTCTAACAATGTGAGTGATCCGA
 AGGGTCCACCAGCAAGATTGCCCGCTGGAGCAGAACGGGAGCCCGCTAGGAAGAGGAAGGCTTGGGAG
 TACAGGTGCAAAAATGCAGGGAGTGCCTTTAAACACTCGGGCCATCTGATGAAAACCAACCTTAGGAAA
 GGAACCATGCTGCCAGTTTTCTGTGTGGTGAACATTATGAAAACGCCATTGAATATGATTGCAAGGAGG
 AGCATGCAGAATTTGTGCTGGTGAAGGATATGCTTTTCAACCAGCTGATCGAAATGGCATTGCTGTC
 TCTAGTTATTACATAGCTCTGCTGCCAGGCCAAAGGGCTAATCCAGGTTGAAAGTGGAAATCCAGTT
 CCACTGTCTTACGTGACAGATGCCCTGATGCTACAGTAGCAGATATGCTTCAAGATGTGTATCATGTGG
 TCACATTGAAAATTCAGTTACACAGTTGCCCAAACACTAGAAGACTTGCCTCCCGAACAAATGGTCGCACAC
 CACAGTGAGGAATGCTCTGAAGGACTTACTGAAAGATATGAATCAGAGTTCATTGGCCAAGGAGTGCCCC
 CTTTCACAGAGTATGATTTCTTCCATTGTGAACAGTACTTACTATGCAAAATGTCTCAGCAGCAAAAATGTC
 AAGAATTTGGAAGGTGGTACAAACATTTCAAGAAGACAAAAGATATGATGGTTGAAATGGATAGTCTTTC
 TGAGCTATCCCAGCAAGGCGCAATCATGTCAATTTTGGCCAGCAACCAGTTCAGGGAACACAGCCGAG
 CAGCCTCCATCCCCTGCGCAGCTCTCCCATGGCAGCCAGCCCTCTGTCCGGACACCTCTTCCAAACCTGC
 ACCCTGGGCTCGTATCAACACCTATCAGTCCTCAATTTGGTCAACCAGCAGCTGGTGATGGCTCAGCTGCT
 GAACCAGCAGTATGCAGTGAATAGACTTTTAGCCAGCAGTCTTAAACCAACAATACTTGAACCACCT
 CCCCTGTAGTATGATGAATAAGCCTTTGGAGCAACAGGTTTCGACCAACACAGAGGTGTCTTCCG
 AAATCTACCAGTGGGTACGCGATGAACGAAACGAGCAGGAATCTCCAGGCGGTATTTGCACGTGTGGC
 TTTTAAACAGAACCTCAGGGCTTGCTTTTCAAGAAATCCTCCGAAAGGAAGAGGACCCCAAGACTGCATCCCAG
 TCTTTGCTGGTAAACCTTCGGGCTATGCAGAAATTTCTTGCAGTTACCGGAAGCTGAAAGAGACCGAATAT
 ACCAGGACGAAAGGGAAAGGAGCTTGAATGCTGCCTCGGCCATGGGTCTGCCCCCTCATCAGCACACC
 ACCCAGCCGCTCCCCAGGTGAAAACAGCTACTATTGCCACTGAAAGGAATGGGAAACCAGAGAACAAT
 ACCATGAACATTAATGCTTCCATTTATGATGAGATTTCAGCAGGAAATGAAGCGTGCTAAAGTGTCTCAAG
 CACTGTTTGCAAAGGTTGCAGCAACCAAAAGCCAGGGATGGTTGTGCGAGCTGTTACGCTGGAAAGAAGA
 TCCTTCTCCAGAAAACAGAACCTGTGGGAGAACCTCTCCATGATCCGAAGGTTCTCAGTCTTCTCAG
 CCAGAACGTGATGCCATTTATGAACAGGAGAGCAACGCGGTGCATCACCATGGCGACAGGCCGCCCCACA
 TTATCCATGTTCCAGCAGAGCAGATTTCAGCAACAGCAGCAGCAACAGCAACAGCAGCAGCAGCAGCA
 GGCACCGCCGCTCCACAGCCACAGCAGGCCACAGACAGGCCCTCGGCTCCCCCAGGCAACCCACG
 GTGGCCTCTCCAGCAGAGTCAGATGAGGAAAACCGACAGAAGACCCGGCCACGAACAAAAATTTTCAGTGG
 AAGCCTTGGGAATCCTCCAGAGTTTCAACAAGACGTGGGCTGTACCCTGACGAAGAGGCCATCCAGAC
 TCTGTCTGCCAGCTCGACCTTCCCAAGTACACCATCATCAAGTTCTTTTCAAGAACAGCGGTACTATCTC
 AAGCACCACGGCAAACTGAAGGACAATTCGGTTTAGAGGTGATGTGGCAGAATATAAAGAAGAGGAGC
 TGCTGAAGGATTTGGAAGAGAGTGTCCAAGATAAAAATACTAACCCCTTTTTTTCAGTAAAAGTGAAGA
 AGAGCTGCAGTGAAGGAAACACAGACATTAATACTGATTTGAAAGAC

ACGCGTACGCGGCCGCTCGAGCAGAAACTCATCTCAGAAGAGGATCTGGCAGCAATGATATCCTGGATT
 ACAAGGATGACGACGATAAGGTTTAA

Protein Sequence: >RC226152 protein sequence
Red=Cloning site Green=Tags(s)

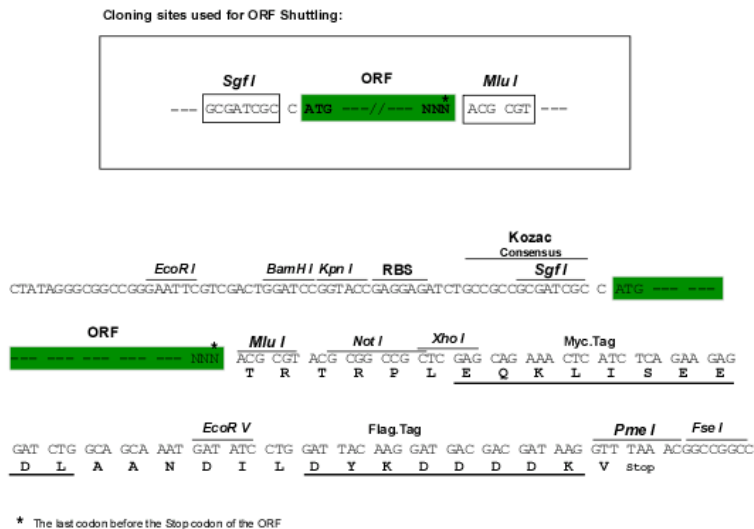
```
MDHLNEATQGKEHSEMSNNVSDPKGPPAKIARLEQNGSPLGRGRLGSTGAKMQGVPLKHSGLMKTNLRK
GTMLPVFCVVEHYENAI EYDCKEEHAEFVLVRKDFNQLIEMALLSLGYSHSSAAQAKGLIQVGKWNPV
PLSYVTDAPDATVADMLQDVYHVVTLKIQLHSCPKLEDLPPEQWSHTTVRNALKDLLKDMNQSSLAKECP
LSQSMISSIVNSTYYANVSAAKCQEFGRWYKHFKKTKDMMVEMDSLSEL SQQGАНHVNFQQQPVPNTAE
QPPSPAQLSHGSQPSVRTPLPNLHPGLVSTPISPQLVNQQLVMAQLLNQQYAVNRLLAQQLNQYLNHP
PPVSRSMNKPLEQQVSTNTEVSSEIYQWVRDELKRAGISQAVFARVAFNRRTQGLLSEILRKEEDPKTASQ
SLLVNLRAMQNFLQLPEAERDRIYQDERERSLNAASAMGPAPLISTPPSRPPQVKTATIATERNKGPENN
TMNINASIYDEIQQEMKRAKVSQALFAKVAATKSQGWLCCELLRWKEDPSPENRTLWENLSMIRRFSLPQ
PERDAIYEQESNAVHHHGDRPPHIHVPAEQIQQQQQQQQQQQQQAPPQPQQQPQTGPRLPPRQPT
VASPAESDEENRQKTRPRTKISVEALGILQSF IQDVGLYPDEEAIQTL SAQLDLPKYTI IKFFQNRYYL
KHHGKLDKNSGLEVDVAEYKEEELLKDLEESVQDKNTNTLFSVKLEEELSVEGNTDINTDLKD
```

TRTRPLEQKLISEEDLAANDILDYKDDDDKV

Chromatograms: https://cdn.origene.com/chromatograms/mk6209_f03.zip

Restriction Sites: Sgfl-MluI

Cloning Scheme:



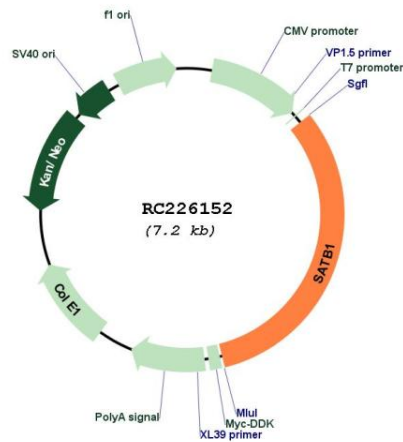
ACCN: NM_001131010

ORF Size: 2289 bp

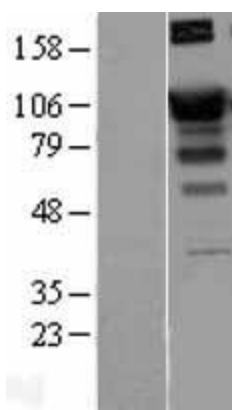
OTI Disclaimer: The molecular sequence of this clone aligns with the gene accession number as a point of reference only. However, individual transcript sequences of the same gene can differ through naturally occurring variations (e.g. polymorphisms), each with its own valid existence. This clone is substantially in agreement with the reference, but a complete review of all prevailing variants is recommended prior to use. [More info](#)

OTI Annotation: This clone was engineered to express the complete ORF with an expression tag. Expression varies depending on the nature of the gene.

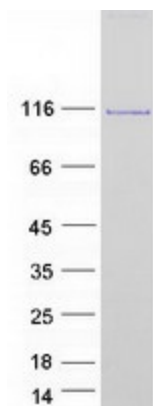
Components:	The ORF clone is ion-exchange column purified and shipped in a 2D barcoded Matrix tube containing 10ug of transfection-ready, dried plasmid DNA (reconstitute with 100 ul of water).
Reconstitution Method:	<ol style="list-style-type: none"> 1. Centrifuge at 5,000xg for 5min. 2. Carefully open the tube and add 100ul of sterile water to dissolve the DNA. 3. Close the tube and incubate for 10 minutes at room temperature. 4. Briefly vortex the tube and then do a quick spin (less than 5000xg) to concentrate the liquid at the bottom. 5. Store the suspended plasmid at -20°C. The DNA is stable for at least one year from date of shipping when stored at -20°C.
RefSeq:	<u>NM_001131010.4</u>
RefSeq Size:	4054 bp
RefSeq ORF:	2292 bp
Locus ID:	6304
UniProt ID:	<u>Q01826</u>
Cytogenetics:	3p24.3
Protein Families:	Druggable Genome, Transcription Factors
MW:	86 kDa
Gene Summary:	This gene encodes a matrix protein which binds nuclear matrix and scaffold-associating DNAs through a unique nuclear architecture. The protein recruits chromatin-remodeling factors in order to regulate chromatin structure and gene expression. [provided by RefSeq, Apr 2016]

Product images:


Circular map for RC226152



Western blot validation of overexpression lysate (Cat# [LY427355]) using anti-DDK antibody (Cat# [TA50011-100]). Left: Cell lysates from untransfected HEK293T cells; Right: Cell lysates from HEK293T cells transfected with RC226152 using transfection reagent MegaTran 2.0 (Cat# [TT210002]).



Coomassie blue staining of purified SATB1 protein (Cat# [TP326152]). The protein was produced from HEK293T cells transfected with SATB1 cDNA clone (Cat# RC226152) using MegaTran 2.0 (Cat# [TT210002]).