

Product datasheet for **RC226148**

EPLIN (LIMA1) (NM_001113546) Human Tagged ORF Clone

Product data:

Product Type:	Expression Plasmids
Product Name:	EPLIN (LIMA1) (NM_001113546) Human Tagged ORF Clone
Tag:	Myc-DDK
Symbol:	EPLIN
Synonyms:	EPLIN; LDLCQ8; SREBP3
Mammalian Cell Selection:	Neomycin
Vector:	pCMV6-Entry (PS100001)
E. coli Selection:	Kanamycin (25 ug/mL)



[View online »](#)

ORF Nucleotide
Sequence:

>RC226148 representing NM_001113546
Red=Cloning site Blue=ORF Green=Tags(s)

TTTTGTAATACGACTCACTATAGGGCGGCCGGAATTCGTCGACTGGATCCGGTACCGAGGAGATCTGCC
GCC**CGCATCGCC**

ATGGAATCATCTCCATTTAATAGACGGCAATGGACCTCACTATCATTGAGGGTAACAGCCAAAGAACTTT
CTCTTGTCACAAAGAACAAGTCATCGGCTATTGTGGAAATATTCTCCAAGTACCAGAAAGCAGCTGAAGA
AACAAACATGGAGAAGAAGAGAAGTAACACCGAAAATCTCTCCAGCACTTTAGAAAGGGGACCCTGACT
GTGTTAAAGAAGAAGTGGGAGAACCAGGGCTGGGAGCAGAGTCTCACACAGACTCTCTACGGAACAGCA
GCACTGAGATTAGGCACAGAGCAGACCATCCTCCTGCTGAAGTGACAAGCCACGCTGCTTCTGGAGCCAA
AGCTGACCAAGAAGAACAATCCACCCAGATCTAGACTCAGGTCACCTCCTGAAGCCCTCGTTCAGGGT
CGATATCCCCACATCAAGGACGGTGAAGATCTTAAAGACCACTCAACAGAAAAGTAAAAAATGGAAAATT
GTCTAGGAGAATCCAGGCATGAAGTAGAAAAATCAGAAATCAGTGA AACACAGATGCTTCGGGCAAAAT
AGAGAAAATAATGTTCCGCTGAACAGGCTTAAGATGATGTTTGAGAAAGGTGAACCAACTCAAACAACTAAG
ATTCTCCGGGCCAAAGCCGAAGTGCAAGTGGAAGGAAGATCTCTGAAAACAGCTATTCTCTAGATGACC
TGGAAATAGGCCAGGTCAGTTGTCATCTTCTACATTTGACTCGGAGAAAAATGAGAGTAGACGAAATCT
GGAATCTCACGCCTCTCAGAAACCTCTATAAAGGATCGAATGGCCAAGTACCAGGCAGCTGTGTCCAAA
CAAAGCAGCTCAACCAACTATACAAATGAGCTGAAAGCCAGTGGTGGCGAAATCAAAATTCATAAAATGG
AGCAAAAGGAGAAATGTGCCCCAGGTCCTGAGGCTGCATCACCCATCAGGAAGGGGAAAAGATTCTGC
AAATGAGAATAGCCTGGCAGTCCGTTCCACCCCTGCCGAAGTACTCCCGTACTCCAGGTTAAGAGT
GAGGTTCAACAGCCTGTCCATCCAAGCCACTAAGTCCAGATTCAGAGCCTCCAGTCTTCTGAAAAGTT
TCCTCCCAAAGCAATGAAGAAGTTTCAGGCACCTGCAAGAGAGACCTGCGTGGAAATGTCAGAAGACAGT
CTATCCAATGGAGCGTCTCTGGCCAACCAAGCAGGTGTTTCACATCAGCTGCTTCCGTTGCTCCTATTGC
AACAAACAACTCAGTCTAGGAACATATGCATCTTTACATGGAAGAATCTATTGTAAGCCTCACTTCAATC
AACTCTTTAAATCTAAGGGCAACTATGATGAAGGCTTTGGGCACAGACCACACAAGGATCTATGGGCAAG
CAAAAATGAAAACGAAGAGATTTTGGAGAGACCAGCCAGCTTGCAAAATGCAAGGGAGACCCCTCACAGC
CCAGGGGTAGAAGATGCCCTATTGCTAAGGTGGGTGCCTGGCTGCAAGTATGGAAGCCAAGGCCTCCT
CTCAGCAGGAGAAGGAAGACAAGCCAGCTGAAACCAAGAAGCTGAGGATCGCCTGCCACCCCCCACTGA
ACTTGGAAAGTTCAGGAAGTGCCTTGGAGGAAGGGATCAAAATGTCAAAGCCCAAATGGCCTCCTGAAGAC
GAAATCAGCAAGCCGAAGTTCCTGAGGATGTCGATCTAGATCTGAAGAAGCTAAGACGATCTTCTTCAC
TGAAAGGAAAGAAGCCGCCATTCACTGTAGCAGCTTCATTTCAAAGCACCTCTGTCAAGAGCCCAAAAC
TGTGTCCCACTATCAGGAAAGGCTGGAGCATGTCAGAGCAGAGTGAAGAGTCTGTGGGTGGAAGAGTT
GCAGAAAGGAAACAAGTGGAAAAATGCCAAGGCTTCTAAGAAGAATGGGAATGTGGGAAAAACAACCTGGC
AAAACAAGAATCTAAGGAGAGACAGGGAAGAGAAGTAAAGGAAGGTCATAGTTTGGAGATGGAGAATGA
GAATCTTGTAGAAAAATGGTGCAGACTCCGATGAAGATGATAACAGCTTCTCAAACAACAATCTCCACAA
GAACCAAGTCTCTGAATTGGTCGAGTTTTGTAGACAACACCTTTGCTGAAGAATCACTACTCAGAATC
AGAAATCCAGGATGTGGAACCTGGGAGGGAGAAGTGGTCAAAGAGCTCTCTGTGGAAGAACAGATAAA
GAGAAATCGGTATTATGATGAGGATGAGGATGAAGAG

ACGCGTACGCGGCCGCTCGAGCAGAAACTCATCTCAGAAGAGGATCTGGCAGCAAATGATATCCTGGATT
ACAAGGATGACGACGATAAGGTTTAA

Protein Sequence: >RC226148 representing NM_001113546
Red=Cloning site Green=Tags(s)

```

MESSPFNRRQWTSLSLRVTAKELSLVNKNKSSAIVEIFSKYQKAAEETNMEKKRSNTENLSQHFRKGLT
VLKKKWENPGLGAESHTDSLRSNSTEIRHRADHPPAEVTSHAASGAKADQEEQIHPRSRLRSPPEALVQG
RYPHIKDGEDLDKDHSTESKKMENCLGESRHEVEKSEISENTDASGKIEKYNVPLNRLKMMFEKGEPTQTK
ILRAQSRASGRKISENSYSLDDLEIGPGQLSSSTFDSEKNESRRNLELPRLSETSIKDRMAKYQAAVSK
QSSSTNYTNELKASGGEIKIHKMEQKENVPPGPEVCITHQEGEKISANENSLAVRSTPAEDDSRDSQVKS
EVQQPVHPKPLSPDSRASSLSESSPPKAMKKFQAPARETCVECQKTVYPMERLLANQQVFHISCFRCSYC
NNKLSLGTYASLHGRIYCKPHFNQLFKSKGNYDEGFGHRPHKDLWASKNENEEILERPAQLANARETPHS
PGVEDAPIAKVGVLAASMEAKASSQKEKDKPAETKKLRIAWPPPELGSSSGSALEEGIKMSKPKWPPED
EISKPEVPEDVDLDLKKLRRSSSLKERSRPFTVAASFQSTSVKSPKTVSPPIRKGWSMSEQSEESVGGRV
AERKQVENAKASKKNGNVGKTTWQNKESKGETGKRSKEGHSLEMENENLVENGADSDDDNSFLKQQSPQ
EPKSLNWSFVDNTFAEEFTTQNKQSQDVELWEGEVVKELSVEEQIKRNRYYDEDEDEE
    
```

TRTRPLEQKLISEEDLAANDILDYKDDDDKV

Chromatograms: https://cdn.origene.com/chromatograms/mg2565_f11.zip

Restriction Sites: SgfI-MluI

Cloning Scheme:

Cloning sites used for ORF Shuttling:



* The last codon before the Stop codon of the ORF

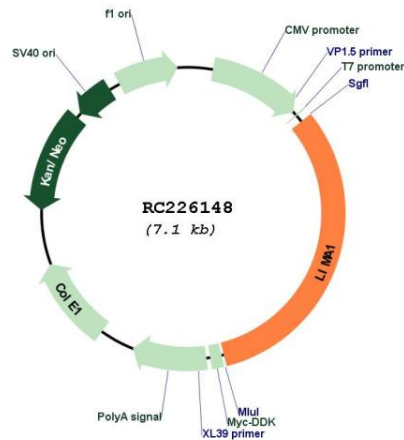
ACCN: NM_001113546

ORF Size: 1235 bp

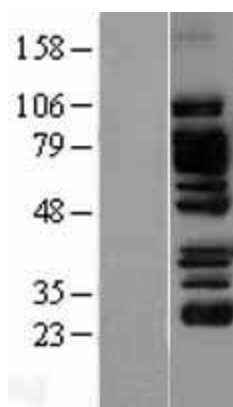
OTI Disclaimer: The molecular sequence of this clone aligns with the gene accession number as a point of reference only. However, individual transcript sequences of the same gene can differ through naturally occurring variations (e.g. polymorphisms), each with its own valid existence. This clone is substantially in agreement with the reference, but a complete review of all prevailing variants is recommended prior to use. [More info](#)

OTI Annotation: This clone was engineered to express the complete ORF with an expression tag. Expression varies depending on the nature of the gene.

Components:	The ORF clone is ion-exchange column purified and shipped in a 2D barcoded Matrix tube containing 10ug of transfection-ready, dried plasmid DNA (reconstitute with 100 ul of water).
Reconstitution Method:	<ol style="list-style-type: none"> 1. Centrifuge at 5,000xg for 5min. 2. Carefully open the tube and add 100ul of sterile water to dissolve the DNA. 3. Close the tube and incubate for 10 minutes at room temperature. 4. Briefly vortex the tube and then do a quick spin (less than 5000xg) to concentrate the liquid at the bottom. 5. Store the suspended plasmid at -20°C. The DNA is stable for at least one year from date of shipping when stored at -20°C.
RefSeq:	<u>NM_001113546.1, NP_001107018.1</u>
RefSeq ORF:	2283 bp
Locus ID:	51474
UniProt ID:	<u>Q9UHB6</u>
Cytogenetics:	12q13.12
MW:	85 kDa
Gene Summary:	This gene encodes a cytoskeleton-associated protein that inhibits actin filament depolymerization and cross-links filaments in bundles. It is downregulated in some cancer cell lines. Alternatively spliced transcript variants encoding different isoforms have been described for this gene, and expression of some of the variants maybe independently regulated. [provided by RefSeq, Aug 2011]

Product images:


Circular map for RC226148



Western blot validation of overexpression lysate (Cat# [LY426434]) using anti-DDK antibody (Cat# [TA50011-100]). Left: Cell lysates from untransfected HEK293T cells; Right: Cell lysates from HEK293T cells transfected with RC226148 using transfection reagent MegaTran 2.0 (Cat# [TT210002]).