

Product datasheet for **RC226108L4V**

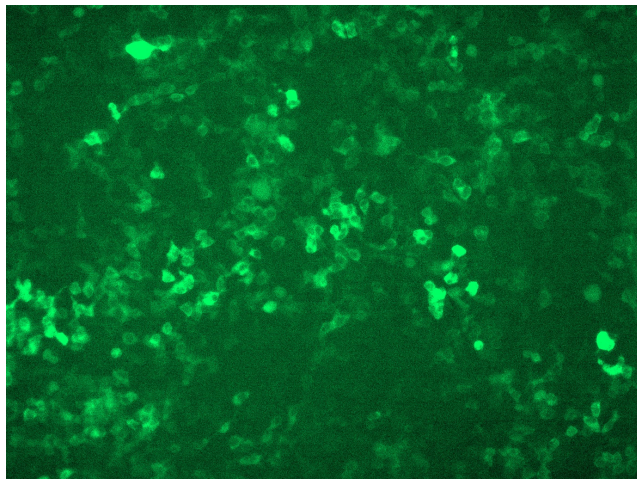
SCIN (NM_001112706) Human Tagged ORF Clone Lentiviral Particle

Product data:

Product Type:	Lentiviral Particles
Product Name:	SCIN (NM_001112706) Human Tagged ORF Clone Lentiviral Particle
Symbol:	SCIN
Mammalian Cell Selection:	Puromycin
Vector:	pLenti-C-mGFP-P2A-Puro (PS100093)
Tag:	mGFP
ACCN:	NM_001112706
ORF Size:	2145 bp
ORF Nucleotide Sequence:	The ORF insert of this clone is exactly the same as(RC226108).
OTI Disclaimer:	The molecular sequence of this clone aligns with the gene accession number as a point of reference only. However, individual transcript sequences of the same gene can differ through naturally occurring variations (e.g. polymorphisms), each with its own valid existence. This clone is substantially in agreement with the reference, but a complete review of all prevailing variants is recommended prior to use. More info
OTI Annotation:	This clone was engineered to express the complete ORF with an expression tag. Expression varies depending on the nature of the gene.
RefSeq:	NM_001112706.2
RefSeq ORF:	2148 bp
Locus ID:	85477
UniProt ID:	Q9Y6U3
Cytogenetics:	7p21.3
Protein Pathways:	Fc gamma R-mediated phagocytosis, Regulation of actin cytoskeleton
MW:	80.3 kDa
Gene Summary:	SCIN is a Ca(2+)-dependent actin-severing and -capping protein (Zunino et al., 2001 [PubMed 11568009]).[supplied by OMIM, May 2010]



[View online »](#)

Product images:

[RC226108L4] was used to prepare Lentiviral particles using [TR30037] packaging kit. HEK293T cells were transduced with RC226108L4V particle to overexpress human SCIN-mGFP fusion protein.