

Product datasheet for **RC226102**

bcl 6 (BCL6) (NM_001130845) Human Tagged ORF Clone

Product data:

Product Type:	Expression Plasmids
Product Name:	bcl 6 (BCL6) (NM_001130845) Human Tagged ORF Clone
Tag:	Myc-DDK
Symbol:	bcl 6
Synonyms:	BCL5; BCL6A; LAZ3; ZBTB27; ZNF51
Mammalian Cell Selection:	Neomycin
Vector:	pCMV6-Entry (PS100001)
E. coli Selection:	Kanamycin (25 ug/mL)



[View online »](#)

ORF Nucleotide
Sequence:

>RC226102 representing NM_001130845
Red=Cloning site Blue=ORF Green=Tags(s)

TTTTGTAATACGACTCACTATAGGGCGGCCGGAATTCGTCGACTGGATCCGGTACCGAGGAGATCTGCC
GCC**CGCATCGCC**

ATGGCCTCGCCGGCTGACAGCTGTATCCAGTTCACCCGCCATGCCAGTGATGTTCTTCTCAACCTTAATC
GTCTCCGAGTCGAGACATCTTGACTGATGTTGTCATTGTTGTGAGCCGTGAGCAGTTTAGAGCCATAA
AACGGTCTCATGGCCTGCAGTGGCCTGTTCTATAGCATCTTTACAGACCAGTTGAAATGCAACCTTAGT
GTGATCAATCTAGATCCTGAGATCAACCCTGAGGGATTCTGCATCCTCTGGACTTCATGTACACATCTC
GGCTCAATTTGCGGGAGGGCAACATCATGGCTGTGATGGCCACGGCTATGTACCTGCAGATGGAGCATGT
TGTGGACACTTGGCGGAAGTTTATTAAGGCCAGTGAAGCAGAGATGGTTTCTGCCATCAAGCCTCCTCGT
GAAGAGTTCCTCAACAGCCGGATGCTGATGCCCAAGACATCATGGCCTATCGGGTCTGAGGTGGTGG
AGAACAACCTGCCACTGAGGAGCGCCCTGGGTGTGAGAGCAGAGCCTTTGCCCCAGCCTGTACAGTGG
CCTGTCCACACCGCCAGCCTCTTATTCCATGTACAGCCACCTCCCTGTCAGCAGCCTCCTCTTCTCCGAT
GAGGAGTTTCGGGATGTCGGATGCCTGTGGCCAAACCCTTCCCAAGGAGCGGGCACTCCCATGTGATA
GTGCCAGGCCAGTCCCTGGTGTGATACAGCCGGCCGACTTTGGAGGTGTCCCCAATGTGTGCCACAGCAA
TATCTATTACCCAAGGAAACAATCCCAGAAGAGGCACGAAGTGATATGCACTACAGTGTGGCTGAGGGC
CTCAAACCTGTGCCCTCAGCCCGAAATGCCCTACTTCCCTGTGACAAGGCCAGCAAAGAAGAAG
AGAGACCTCCTCGAAGATGAGATTGCCCTGCATTTGAGCCCCCAATGCACCCTGAACCGGAAGGG
TCTGGTTAGTCCACAGAGCCCCAGAAATCTGACTGCCAGCCAACTCGCCACAGAGTCTGCAGCAGT
AAGAATGCCTGCATCCTCAGGCTTCTGGCTCCCTCCAGCCAAGAGCCCACTGACCCAAAGCCTGCA
ACTGGAAGAAATACAAGTTCATCGTGCTCAACAGCCTCAATCAGAATGCCAAACCAGAGGGGCTGAGCA
GGCTGAGCTGGGCGCCTTTCCACAGCCTACACGGCCCACTGCCTGCCAGCCACCCATGGAGCCT
GAGAACCTTGACCTCCAGTCCCCAACCAAGCTGAGTGCCAGCGGGGAGGACTCCACCATCCCAAGCCA
GCCGGCTCAATAACATCGTTAACAGGTCCATGACGGGCTCTCCCGCAGCAGCAGCGAGAGCCACTCACC
ACTCTACATGCACCCCCGAAGTGCACGTCTGCGGCTCTCAGTCCACAGCATGCAGAGATGTGCCTC
CACACCGCTGGCCACGTTCCCTGAGGAGATGGGAGAGACCCAGTCTGAGTACTCAGATTCTAGCTGTG
AGAACGGGCTTCTTCTGCAATGAGTGTGACTGCCGCTTCTCTGAGGAGCCTCACTCAAGAGGCACAC
GCTGCAGACCCACAGTGACAAACCCTACAAGTGTGACCGCTGCCAGGCCTCCTTCCGCTACAAGGGCAAC
CTCGCCAGCCACAAGACCGTCCATACCGGTGAGAAACCCTATCGTTGCAACATCTGTGGGCCCAGTTCA
ACCGGCCAGCCAACCTGAAAACCACACTCGAATTCACCTCTGGAGAGAAGCCCTACAAATGCGAAACCTG
CGGAGCCAGATTTGTACAGGTGGCCACCTCCGTGCCATGTGCTTATCCACACTGGTGAGAAGCCCTAT
CCCTGTGAAATCTGTGGCACCGTTTCCGGCACCTTCCAGTCTGAAAGAGCCACCTGCGAATCCACACAG
GAGAGAAACCTTACCATTGTGAGAAGTGTAACTGCATTTCCGTCAAAAAGCCAGCTGCGACTTCACTT
GCGCCAGAAGCATGGCGCCATACCAACACCAAGGTGCAATACCGCGTGTAGCCACTGACCTGCCTCCG
GAGTCCCCAAAGCCTGC

ACGCGTACGCGGCCGCTCGAGCAGAACTCATCTCAGAAGAGGATCTGGCAGCAAATGATATCCTGGATT
ACAAGGATGACGACGATAAGGTTTAA

Protein Sequence: >RC226102 representing NM_001130845
 Red=Cloning site Green=Tags(s)

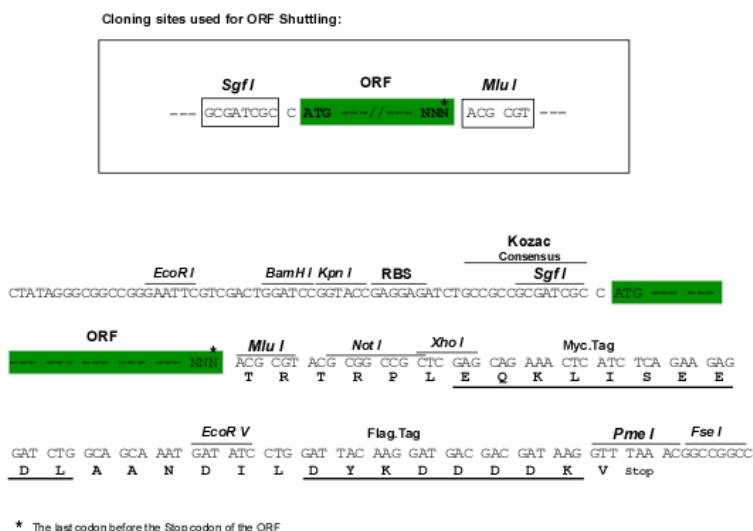
MASPADSCIQFTRHASDVLLNLRNLRSDILTDVVIVVSREQFRAHKTVLMACSGLFYSIFTDQLKCNLS
 VINLDPEINPEGFCILLDFMYTSRLNLRGNIMAVMATAMYLQMEHVVDTCRKF IKASEAEMVSAIKPPR
 EEFLNSRMLMPQDIMAYRGREVVENLPLRSAPGCEsRAFAPSLYsSGLSTPPASYSMySHLPVSSLLFSD
 EEFRDVRMPVANPFPKERALPCDSARPVPGEYSRPTLEVSPNVCHSNIYSPKETIPEEARSDMHYSVAEG
 LKPAAPSARNAPYFPCDKASKEEERPSSEDEIALHFEPNAPLNRKGLVSPQKSDCQPNSPTESSCS
 KNACILQASGSPPAKSPTDPKACNWKYKFIVLNSLNQNAKPEGPEQAELGRLSPRAYTAPPACQPPMEP
 ENLDLQSPTKLSASGEDSTIPQASRLNNIVNRSMTGSPRSSESHPLYMHPPKCTSCGSQSPQHAEMCL
 HTAGPTFPEEMGETQSEYSDSSCENGAF CNECDCRFSEEASLKRHTLQTHSDKPYKCDRCQASFRYKGN
 LASHKTVHTGEKPYRCNICGAQFNRPANLKTHTRIHSGEKPYKCETCGARFVQVAHLRAHVL IHTGEKPY
 PCEICGTRFRLQTLKSHLRIHTGEKPYHCEKCNLHFRHKSQRLRLHLRQKHGAI TTKVQYRVSATDLPP
 ELPKAC

TRTRPLEQKLI SEEDLAANDILDYKDDDDKV

Chromatograms: https://cdn.origene.com/chromatograms/mg2970_b05.zip

Restriction Sites: Sgfl-MluI

Cloning Scheme:

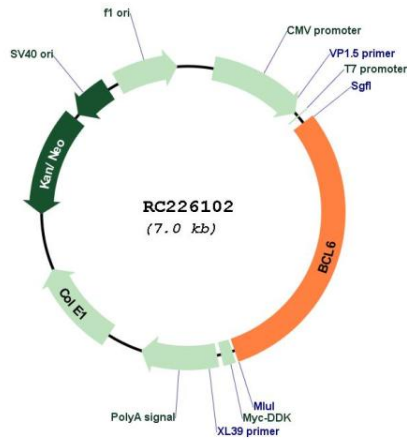


ACCN: NM_001130845

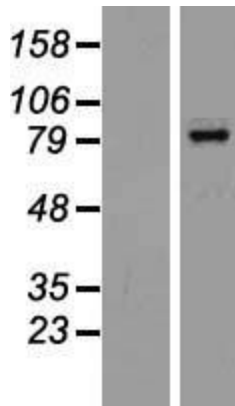
ORF Size: 2118 bp

OTI Disclaimer:	<p>Due to the inherent nature of this plasmid, standard methods to replicate additional amounts of DNA in E. coli are highly likely to result in mutations and/or rearrangements. Therefore, OriGene does not guarantee the capability to replicate this plasmid DNA. Additional amounts of DNA can be purchased from OriGene with batch-specific, full-sequence verification at a reduced cost. Please contact our customer care team at custsupport@origene.com or by calling 301.340.3188 option 3 for pricing and delivery.</p> <p>The molecular sequence of this clone aligns with the gene accession number as a point of reference only. However, individual transcript sequences of the same gene can differ through naturally occurring variations (e.g. polymorphisms), each with its own valid existence. This clone is substantially in agreement with the reference, but a complete review of all prevailing variants is recommended prior to use. More info</p>
OTI Annotation:	<p>This clone was engineered to express the complete ORF with an expression tag. Expression varies depending on the nature of the gene.</p>
Components:	<p>The ORF clone is ion-exchange column purified and shipped in a 2D barcoded Matrix tube containing 10ug of transfection-ready, dried plasmid DNA (reconstitute with 100 ul of water).</p>
Reconstitution Method:	<ol style="list-style-type: none">1. Centrifuge at 5,000xg for 5min.2. Carefully open the tube and add 100ul of sterile water to dissolve the DNA.3. Close the tube and incubate for 10 minutes at room temperature.4. Briefly vortex the tube and then do a quick spin (less than 5000xg) to concentrate the liquid at the bottom.5. Store the suspended plasmid at -20°C. The DNA is stable for at least one year from date of shipping when stored at -20°C.
RefSeq:	<p>NM_001130845.1, NP_001124317.1</p>
RefSeq ORF:	<p>2121 bp</p>
Locus ID:	<p>604</p>
UniProt ID:	<p>P41182</p>
Cytogenetics:	<p>3q27.3</p>
Protein Families:	<p>Druggable Genome, Transcription Factors</p>
MW:	<p>78.7 kDa</p>
Gene Summary:	<p>The protein encoded by this gene is a zinc finger transcription factor and contains an N-terminal POZ domain. This protein acts as a sequence-specific repressor of transcription, and has been shown to modulate the transcription of STAT-dependent IL-4 responses of B cells. This protein can interact with a variety of POZ-containing proteins that function as transcription corepressors. This gene is found to be frequently translocated and hypermutated in diffuse large-cell lymphoma (DLCL), and may be involved in the pathogenesis of DLCL. Alternatively spliced transcript variants encoding different protein isoforms have been found for this gene. [provided by RefSeq, Aug 2015]</p>

Product images:



Circular map for RC226102



Western blot validation of overexpression lysate (Cat# [LY427282]) using anti-DDK antibody (Cat# [TA50011-100]). Left: Cell lysates from untransfected HEK293T cells; Right: Cell lysates from HEK293T cells transfected with RC226102 using transfection reagent MegaTran 2.0 (Cat# [TT210002]).