

Product datasheet for **RC226099**

Lebercilin (LCA5) (NM_001122769) Human Tagged ORF Clone

Product data:

Product Type:	Expression Plasmids
Product Name:	Lebercilin (LCA5) (NM_001122769) Human Tagged ORF Clone
Tag:	Myc-DDK
Symbol:	Lebercilin
Synonyms:	C6orf152
Mammalian Cell Selection:	Neomycin
Vector:	pCMV6-Entry (PS100001)
E. coli Selection:	Kanamycin (25 ug/mL)



[View online »](#)

ORF Nucleotide
Sequence:

>RC226099 representing NM_001122769
Red=Cloning site Blue=ORF Green=Tags(s)

TTTTGTAATACGACTCACTATAGGGCGGCCGGAATTCGTCGACTGGATCCGGTACCGAGGAGATCTGCC
GCCGCGATCGCC

ATGGGGAAAGAGCAGGAAGTCCAGGACTGATCAAGAAAGAAAGGCAGGCAAACACCATTATTCTTACT
TATCTGATTTTGAAACGCCACAGTCTTCTGGCCGATCATCGCTGGTCAGTTCTTACCTGCAAGTGTAG
GAGAAAAATCCTAAAAGACAACTTCAGATGGCCAAGTACATCACCAAGCCCTCGGAAACCAAGCCCT
AAGGGTCTACCAAACAGAAAGGGAGTCCGAGTGGGATTTTCGCTCCAGAGCCTCAATAGAGAGCCACTTC
GGAAAGATACTGATCTTGTACAAAACGGATTCTGTCTGCAAGACTGCTAAAAATCAATGAGTTGCAGAA
TGAAGTATCTGAACTCCAGGTCAAGTTAGCTGAGCTGCTAAAAGAAAATAAATCTTTGAAAAGGCTTCAG
TACAGACAGGAGAAAGCCCTGAATAAGTTTGAAGATGCCGAAAATGAAATCTCACAACTTATATTTTCGTC
ATAACAATGAGATTACAGCACTCAAAGAACGCTTAAGAAAATCTCAAGAGAAAGAACGGGCAACTGAGAA
AAGGGTAAAAGATACAGAAAGTGAAGTATTTAGGACAAAATTTTCCTTACAGAACTGAAAGAGATCTCT
GAAGCTAGACACCTACCTGAACGAGATGATTTGGCAAAGAACTAGTTTACGAGAGTTAAAGTTAGATG
ACACCGAGAGAAGAAATTAAGGAGCTATCGAAAACTTGAAGTACTAACAGTTTCCACGACAGTT
GCTTGCTGAAAGGAAAAGGGCATATGAGGCTCATGATGAAAAATAAAGTTCTTCAAAGGAGGTACAGCGA
CTATATCACAAATAAAGGAAAAGGAGAGAACTGGATATAAAAAATATATATTCTAATCGTCTGCCAA
AGTCTCTCCAAATAAAGAGAAAGAACTTGCAATTAAGAAAAATGCTGCATGCCAGAGTGAATTTGCAGA
CCTGTGTACAAAAGGAGTACAAACCATGGAAGACTTCAAGCCAGAAGAAATATCCTTTAACTCCAGAAACA
ATTATGTGTTACGAAAACAAATGGGAAGAACCAGGACATCTTACTTTGGACTTGAATCTCAAAGCAAG
ACAGGCATGGAGAAGCAGGGATTCTAAACCCAATTATGGAAAGAGAAGAAAAATTTGTTACAGATGAAGA
ACTCCATGTCGTAACAGGAGGTTGAAAAGCTGGAGGATGAATGGGAAAGAGAAGAACTTGATAAAAAAG
CAAAAAGAAAAGGCATCTTTACTGGAAAGAGAAGAAAAGCCAGAGTGGGAACTGGAAGGTACCAACTAG
GAATGTATCCAATTCAGAATATGGATAAATGCAAGGAGAGGAAGAAAGAAAGACTGAAGAGAGAAATGCT
ACTTGCTAAACTGAATGAAATTGACAGAGAACTCCAAGATTCTCGAAATCTAAAAACCCTGTTTTGCCA
TTGTTACCTGATTTTGAATCAAACTACACTCCCAGAGAGAAGCCCAAAACATACAGGTTCTCTGAAT
CCTCAGAGAGATTATTTAATGGGCATCTTTGCAAGACATCAGTTTCTCAACTCCAAAAGGAGAAGGTCA
GAATTCAGGAAATGTTAGAAGTCCAGCCTCCCCTAATGAGTTCGCATTTGGTAGCTACGTGCCTTCGTTT
GCAAAAACATCAGAGAGGTCAAATCCATTTAGTCAAAAAAGTAGTTTTTTGGATTTCAAAGAAACAGTA
TGGAAAAACTTAGTAAAGATGGTGTAGATTTAATTACAAGAAAAGAGAAAAAGCTAATTTGATGGAACA
GTTATTTGGTGCCAGTGGTAGCAGCACCATTTCTCCAAAAGCAGTGACCCAAATTTCTGTGGCTTCCAGT
AAAGGAGACATTGACCCTCTAAATTTTCTCCCTGGGAATAAAGGCAGCAGAGATCAAGAACATGATGAAG
ATGAAGGCTTTTTCTCAGTGAAGGAAGAAGTTTTAATCCAAATAGGCACCGATTAACATGCAGACGA
TAAACCAGCAGTAAAAGCAGCTGATTCTGTAGAAGATGAAATTGAAGAAGTAGCACTGAGA

ACGCGTACGCGGCCGCTCGAGCAGAACTCATCTCAGAAGAGGATCTGGCAGCAATGATATCCTGGATT
ACAAGGATGACGACGATAAGGTTTAA

Protein Sequence: >RC226099 representing NM_001122769
Red=Cloning site Green=Tags(s)

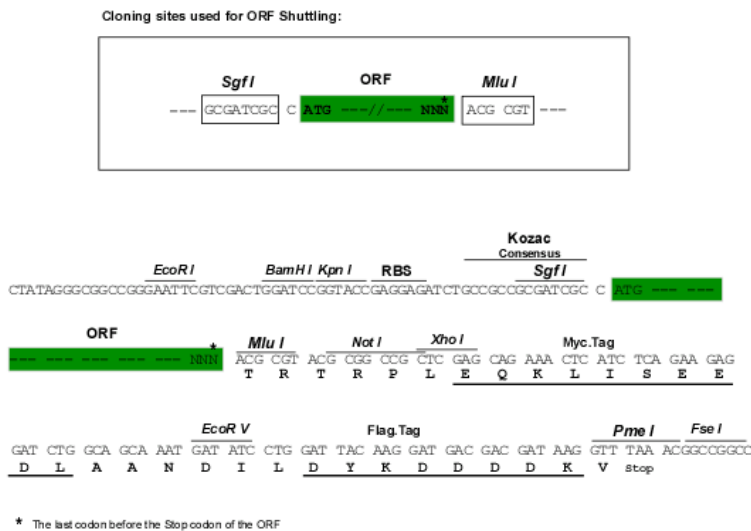
MGERAGSPGTDQERKAGKHYSYLSDFETPQSSGRSSLVSSSPASVRRKNPKRQTSDGQVHHQAPRKPS
 KGLPNRKGVRVGFERSQSLNREPLRKDLDLVTKRILSARLLKINELQNEVSELQVKLAELLKENKSLKRLQ
 YRQEKALNKFEDAENEISQLIFRHNNEITALKERLRKSQEKERATEKRVKDESELFRTKFSLQKLKEIS
 EARHLPERDDLAKKLVSAELKLDDETRRIKELSKNLELSTNSFQRQLLAERKRAYEAHDENKVLQKEVQR
 LYHKLKEKERELDIKNIYSNRLPKSSPKEKELALRKNAACQSDFADLCTKGVQTMEDFKPEEYPLTPET
 IMCYENKWEPEGHLTDLQSQKQDRHGEAGILNPIMEREKVFVTDEELHVVKQEVEKLEDEWEREELDKK
 QKEKASLLEREKPEWETGRYQLGMYPIQNMDKLQEEEEERLKREMLLAKLNEIDRELQDSRNLKYPVLP
 LLPDFESKLSHSPERSPKTYRFSESSERLFGHHLQDISFSTPKGEGQNSGNVRSASPNEFAFGSYVPSF
 AKTSERSNPFSSQKSSFLDFQRNSMEKLSKDGVDLITRKEKKANLMEQLFGASGSSTISSKSSDPNSVASS
 KGDIDPLNFLPGNKGSRDQEHDEDEGFVSEGRSFPNRRHRLKHADDPKPAVKAADSVEDIEEVALR

TRTRPLEQKLISEEDLAANDILDYKDDDDKV

Chromatograms: https://cdn.origene.com/chromatograms/mk6513_f04.zip

Restriction Sites: SgfI-MluI

Cloning Scheme:



ACCN: NM_001122769

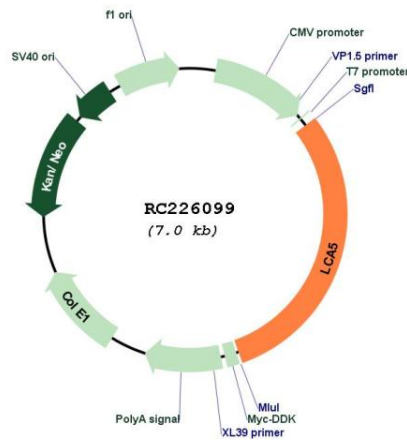
ORF Size: 2091 bp

OTI Disclaimer: The molecular sequence of this clone aligns with the gene accession number as a point of reference only. However, individual transcript sequences of the same gene can differ through naturally occurring variations (e.g. polymorphisms), each with its own valid existence. This clone is substantially in agreement with the reference, but a complete review of all prevailing variants is recommended prior to use. [More info](#)

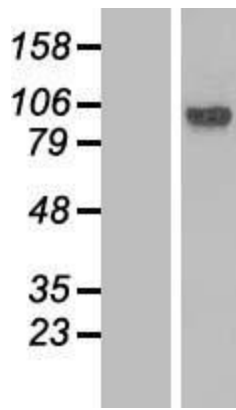
OTI Annotation: This clone was engineered to express the complete ORF with an expression tag. Expression varies depending on the nature of the gene.

- Components:** The ORF clone is ion-exchange column purified and shipped in a 2D barcoded Matrix tube containing 10ug of transfection-ready, dried plasmid DNA (reconstitute with 100 ul of water).
- Reconstitution Method:**
1. Centrifuge at 5,000xg for 5min.
 2. Carefully open the tube and add 100ul of sterile water to dissolve the DNA.
 3. Close the tube and incubate for 10 minutes at room temperature.
 4. Briefly vortex the tube and then do a quick spin (less than 5000xg) to concentrate the liquid at the bottom.
 5. Store the suspended plasmid at -20°C. The DNA is stable for at least one year from date of shipping when stored at -20°C.
- RefSeq:** [NM_001122769.3](#)
- RefSeq ORF:** 2094 bp
- Locus ID:** 167691
- UniProt ID:** [Q86VQ0](#)
- Cytogenetics:** 6q14.1
- MW:** 80.4 kDa
- Gene Summary:** This gene encodes a protein that is thought to be involved in centrosomal or ciliary functions. Mutations in this gene cause Leber congenital amaurosis type V. Alternatively spliced transcript variants are described. [provided by RefSeq, Oct 2009]

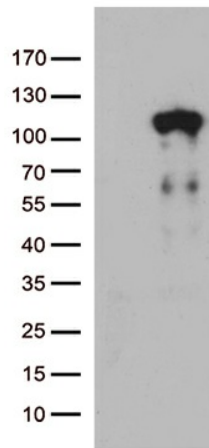
Product images:



Circular map for RC226099



Western blot validation of overexpression lysate (Cat# [LY426559]) using anti-DDK antibody (Cat# [TA50011-100]). Left: Cell lysates from untransfected HEK293T cells; Right: Cell lysates from HEK293T cells transfected with RC226099 using transfection reagent MegaTran 2.0 (Cat# [TT210002]).



HEK293T cells were transfected with the pCMV6-ENTRY control (Cat# [PS100001], Left lane) or pCMV6-ENTRY LCA5 (Cat# RC226099, Right lane) cDNA for 48 hrs and lysed. Equivalent amounts of cell lysates (5 ug per lane) were separated by SDS-PAGE and immunoblotted with anti-LCA5 (Cat# [TA812742])(1:500). Positive lysates [LY426559] (100ug) and [LC426559] (20ug) can be purchased separately from OriGene.