

## Product datasheet for **RC226078**

### SPARCL1 (NM\_001128310) Human Tagged ORF Clone

#### Product data:

Product Type:	Expression Plasmids
Product Name:	SPARCL1 (NM_001128310) Human Tagged ORF Clone
Tag:	Myc-DDK
Symbol:	SPARCL1
Synonyms:	MAST 9; MAST9; PIG33; SC1
Mammalian Cell Selection:	Neomycin
Vector:	pCMV6-Entry (PS100001)
E. coli Selection:	Kanamycin (25 ug/mL)



[View online »](#)

ORF Nucleotide  
Sequence:

>RC226078 ORF sequence  
Red=Cloning site Blue=ORF Green=Tags(s)

TTTTGTAATACGACTCACTATAGGGCGGCCGGAATTCGTCGACTGGATCCGGTACCGAGGAGATCTGCC  
GCC**CGGATCGCC**

ATGAAGACTGGGCTTTTTTCTATGTCTCTTGGAACTGCAGCTGCAATCCCGACAAATGCAAGATTAT  
TATCTGATCATTCCAAACCAACTGCTGAAACGGTAGCACCCGACAACACTGCAATCCCCAGTTTAAGGGC  
TGAAGATGAAGAAAATGAAAAAGAAACAGCAGTATCCACAGAAGACGATTCCCACCATAAGGCTGAAAA  
TCATCAGTACTAAAGTCAAAAGAGGAAAGCCATGAACAGTCAGCAGAACAGGGCAAGAGTTCTAGCCAAG  
AGCTGGGATTGAAGGATCAAGAGGACAGTGATGGTGACTTAAGTGTGAATTTGGAGTATGCACCAACTGA  
AGGTACATTGGACATAAAAGAAGATATGAGTGAGCCTCAGGAGAAAAACTCTCAGAGAACACTGATTTT  
TTGGCTCTGGTGTAGTTCCTTACAGATTCTAACCAACAAGAAAGTATCACAAAGAGAGAGGAAAAACC  
AAGAACAACCTAGAAATTATTCACATCATCAGTTGAACAGGAGCAGTAAACATAGCCAAGGCCTAAGGGA  
TCAAGGAAACCAAGAGCAGGATCCAAATATTTCCAATGGAGAAGAGGAAGAAGAAAAAGGCCAGGTGAA  
GTTGGTACCCACAATGATAACCAAGAAAGAAAGACAGAATTGCCAGGGAGCATGCTAACAGCAAGCAGG  
AGGAAGACAATACCCAATCTGATGATATTTTGGAAAGTCTGATCAACCAACTCAAGTAAGCAAGATGCA  
GGAGGATGAATTTGATCAGGGTAACCAAGAACAAGAAGATAACTCCAATGCAGAAATGGAAGAGGAAAAAT  
GCATCGAACGTCAATAAGCACATTAAGAAACTGAATGGCAGAGTCAAGAGGGTAAAACTGGCCTAGAAG  
CTATCAGCAACCAAGAGACAGAAGAAAAGACTGTTTCTGAGGCTCTGCTCATGGAACCTACTGATGA  
TGGTAATACCACGCCAGAAATCATGGAGTTGATGATGATGGCGATGATGATGGCGATGATGGCGGCACT  
GATGGCCCCAGGCACAGTGCAAGTGTACTACTTCATCCAAGCCAGGCCTTTCTGGAGGCCGAGAGAG  
TCCAATCCATTGCCTATCACCTCAAAATGAGGAGCAAGAGAAAAAGTACATGAAAATGAAAATATAGG  
TACCACTGAGCCTGGAGAGCACCAAGAGGCCAAGAAAGCAGAGAACTCATCAAATGAGGAGGAAACGTCA  
AGTGAAGGCAACATGAGGGTGCATGCTGTGGATTCTTGCATGAGCTTCCAGTGTAAAAGAGGCCACATCT  
GTAAGGCAGACCAACAGGAAAACTCACTGTGTCTGCCAGGATCCAGTGACTTGTCTCCAACAAAACC  
CCTTGATCAAGTTTGTGGCACTGACAAATCAGACCTATGCTAGTTCCTGTCTATCTATTGCTACTAAATGC  
AGACTGGAGGGGACCAAAAAGGGGCATCAACTCCAGCTGGATTATTTGGAGCCTGCAAATCTATTCCTA  
CTTGTACGGACTTTGAAGTGATTCAGTTTCTCTACGGATGAGAGACTGGCTCAAGAATATCCTCATGCA  
GCTTTATGAAGCCAACCTGAACACGCTGGTTATCTAAATGAGAAGCAGAGAAAATAAGTCAAGAAAATT  
TACCTGGATGAAAAGAGGCTTTTGGCTGGGGACCATCCCATTGACCTTCTTAAAGGACTTTAAGAAAA  
ACTACCACATGTATGTGTATCCTGTGACTGGCAGTTTAGTGAACCTTGACCAACACCCTATGGATAGAGT  
CTTGACACATTCTGAACTTGCTCCTCTGCGAGCATCTCTGGTGCCATGGAACACTGCATAACCCGTTTC  
TTTGAGGAGTGTGACCCCAACAAGGATAAGCACATCACCTGAAGGAGTGGGGCCACTGCTTTGGAATTA  
AAGAAGAGGACATAGATGAAAATCTCTTGT

**ACGCGT**ACGCGGCCGCTCGAGCAGAACTCATCTCAGAAGAGGATCTGGCAGCAAATGATATCCTGGATT  
ACAAGGATGACGACGATAAGGTTTAA

**Protein Sequence:** >RC226078 protein sequence  
 Red=Cloning site Green=Tags(s)

```
MKTGLFFLLCLLGTAAAIPNARLLSDHSKPTAETVAPDNTAIPSLRAEDEENKETAVSTEDDSSHKAEK
SSVLKSKEESHEQSAEQGKSSSQELGLKDQEDSDGDL SVNLEYAPTEGLDIKEDMSEPQEKLSENTDF
LAPGVSSF TDSNQQESITKREENQEQPRNYSHHQLNRSSKHSQGLRDQGNQE QDPNISNGEEEEKEPGE
VGTHNDNQERKTELPREHANSKQEEDNTQSDDI LEE SDQPTQVSKMQEDEFDQGNQE QEDNSNAEMEEEN
ASNVNKHIQETEQSQEGKTGLEAISNHKETEETVSEALLMEPTDDGNTTPRNHG VDDDDGDDGDDGGT
DGRHSA SDDYFIP SQAFLEAERAQSIAYHLKIEEQREKVHENENIGTTEPGEHQEAKKAENSSNEETS
SEGNMRVHAVDSCMSFQCKRGHICKADQQKPHVCQDPVTCPPTKPLDQVCGTDNQTYASSCHLFATKC
RLEGTKKGHQLLDYFGACKSIPTCTDFEVIQFPLRMRDWLKNILMQLYEANSEHAGYLNKQRNKYKKI
YLDEKRLLAGDHPIDLLLRDFKKNYHMYVYPVHWQFSELDQHPMDRVLTHSELAPLRASL VPMHCITRF
FEEDPNKDKHITLKEWGHCFGIKEEDIDENLLF
```

TRTRPLEQKLISEEDLAANDILDYKDDDDKV

**Chromatograms:** [https://cdn.origene.com/chromatograms/mk6518\\_c01.zip](https://cdn.origene.com/chromatograms/mk6518_c01.zip)

**Restriction Sites:** SgfI-MluI

**Cloning Scheme:**

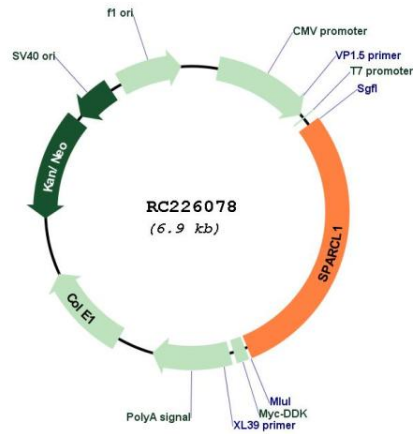


**ACCN:** NM\_001128310

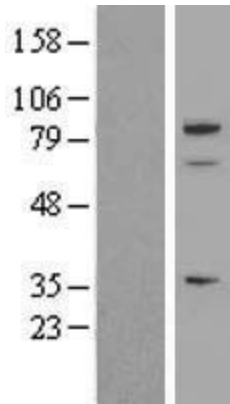
**ORF Size:** 1992 bp

<b>OTI Disclaimer:</b>	<p>Due to the inherent nature of this plasmid, standard methods to replicate additional amounts of DNA in E. coli are highly likely to result in mutations and/or rearrangements. Therefore, OriGene does not guarantee the capability to replicate this plasmid DNA. Additional amounts of DNA can be purchased from OriGene with batch-specific, full-sequence verification at a reduced cost. Please contact our customer care team at <a href="mailto:custsupport@origene.com">custsupport@origene.com</a> or by calling 301.340.3188 option 3 for pricing and delivery.</p> <p>The molecular sequence of this clone aligns with the gene accession number as a point of reference only. However, individual transcript sequences of the same gene can differ through naturally occurring variations (e.g. polymorphisms), each with its own valid existence. This clone is substantially in agreement with the reference, but a complete review of all prevailing variants is recommended prior to use. <a href="#">More info</a></p>
<b>OTI Annotation:</b>	This clone was engineered to express the complete ORF with an expression tag. Expression varies depending on the nature of the gene.
<b>Components:</b>	The ORF clone is ion-exchange column purified and shipped in a 2D barcoded Matrix tube containing 10ug of transfection-ready, dried plasmid DNA (reconstitute with 100 ul of water).
<b>Reconstitution Method:</b>	<ol style="list-style-type: none"> <li>1. Centrifuge at 5,000xg for 5min.</li> <li>2. Carefully open the tube and add 100ul of sterile water to dissolve the DNA.</li> <li>3. Close the tube and incubate for 10 minutes at room temperature.</li> <li>4. Briefly vortex the tube and then do a quick spin (less than 5000xg) to concentrate the liquid at the bottom.</li> <li>5. Store the suspended plasmid at -20°C. The DNA is stable for at least one year from date of shipping when stored at -20°C.</li> </ol>
<b>Note:</b>	Plasmids are not sterile. For experiments where strict sterility is required, filtration with 0.22um filter is required.
<b>RefSeq:</b>	<a href="#">NM_001128310.2</a>
<b>RefSeq Size:</b>	3012 bp
<b>RefSeq ORF:</b>	1995 bp
<b>Locus ID:</b>	8404
<b>UniProt ID:</b>	<a href="#">Q14515</a>
<b>Cytogenetics:</b>	4q22.1
<b>Protein Families:</b>	Druggable Genome, Secreted Protein
<b>MW:</b>	75.2 kDa

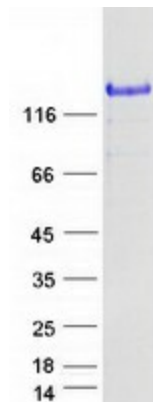
Product images:



Circular map for RC226078



Western blot validation of overexpression lysate (Cat# [LY426947]) using anti-DDK antibody (Cat# [TA50011-100]). Left: Cell lysates from untransfected HEK293T cells; Right: Cell lysates from HEK293T cells transfected with RC226078 using transfection reagent MegaTran 2.0 (Cat# [TT210002]).



Coomassie blue staining of purified SPARCL1 protein (Cat# [TP326078]). The protein was produced from HEK293T cells transfected with SPARCL1 cDNA clone (Cat# RC226078) using MegaTran 2.0 (Cat# [TT210002]).