

Product datasheet for **RC226077**

ELF4 (NM_001127197) Human Tagged ORF Clone

Product data:

Product Type:	Expression Plasmids
Product Name:	ELF4 (NM_001127197) Human Tagged ORF Clone
Tag:	Myc-DDK
Symbol:	ELF4
Synonyms:	ELFR; MEF
Mammalian Cell Selection:	Neomycin
Vector:	pCMV6-Entry (PS100001)
E. coli Selection:	Kanamycin (25 ug/mL)



[View online »](#)

ORF Nucleotide
Sequence:

>RC226077 ORF sequence
Red=Cloning site Blue=ORF Green=Tags(s)

TTTTGTAATACGACTCACTATAGGGCGGCCGGAATTCGTCGACTGGATCCGGTACCGAGGAGATCTGCC
GCC**CGCATCGCC**

ATGGCTATTACCCTACAGCCAGTGACCTGATCTTTGAGTTCGCAAGCAACGGGATGGATGATGATATCC
ACCAGCTGGAAGACCCCTCTGTGTTCCAGCTGTGATCGTGGAGCAGGTACCCTACCCTGATTTACTGCA
TCTGTAICTCGGGACTGGAGTTGGACGACGTTTACAATGGCATCATAACAGACGGGACCTTGTGCATGACG
CAGGATCAGATCCTGGAAGGCAGTTTTTTGCTGACAGATGACAATGAGGCCACCTCGCACACCATGTCAA
CCGCGGAAGTCTTACTCAATATGGAGTCTCCAGCGATATCCTGGATGAGAAGCAGATCTTCAGTACCTC
CGAAATGCTTCCAGACTCGGACCCTGCACCAGCTGCTACTCTGCCCACTACCTGTTTCTGCCTCTGAG
CCCAGTCCCTGAACAGGGCGGGTGACTAGTGACCAGGAGGGGCACTTCTGGAGGAGAAGGCCCTCCA
GAGAGGAAAGTGCCAAGAAGACTGGGAAATCAAAGAAGAGAATCCGGAAGACCAAGGGCAACCGAAGTAC
CTCACCTGCTACTGACCCAGCATCCCCATTAGGAAGAAATCAAAGGATGGCAAAGGCAGCACCATCTAT
CTGTGGGAGTTCTCTCTGGCTCTTCTGCAAGACAGAAACACCTGTCCCAAGTACATCAAGTGGACCCAGC
GAGAGAAAGGCATCTTCAAACCTGGTGGACTCCAAAGCTGTGTCCAAGCTGTGGGGGAAGCAGAAAAACAA
GCCTGACATGAACTATGAGACAATGGGGCGGGCACTAAGATACTACTACCAAAGAGGCATACTGGCCAAA
GTGGAAGGGCAGAGGCTGGTGTACCAGTTTAAGGAGATGCCCAAGGACCTGGTGGTCATTGAAGATGAGG
ATGAGAGCAGCGAAGCCACAGCAGCCCCACCTCAGGCCTCCACGGCCTCTGTGGCCTCTGCCAGTACCAC
CCGGCGAACCAGTCCAGGGTCTCATCCAGATCTGCCCCCAGGGCAAGGGCAGCTTCTTGGGAGAAG
CCAAAAATTGAGCATGTCGGTCTCCAGCCATCTGCGAGTCTGGAATTGGGACCGTCGCTAGACGAGGAGA
TCCCCACTACCTCCACCATGCTCGTCTCTCCAGCAGAGGGCCAGGTCAAGCTACCAAAGTGTGAGTGC
ATCTTCAGTGCCAGCAACATCCACCTAGGAGTGGCCCCGTGGGGTCTGGGCTCGGCCCTGACCCTGCAG
ACGATCCCACTGACCACGGTGTGACCAATGGGCCTCCTGCCAGTACTACTGCTCCCACTCAGCTCGTTC
TCCAGAGTGTTCAGCGGCCTCTACTTTCAAGGACACCTTCACTTTGACGGCCTCTTTCCCCCTGAACGC
CAGTTTCCAAGACAGCCAGGTGGCAGCCCCAGGGGCTCCACTGATTCTCAGTGGCCTCCCCCACTTCTG
GCTGGGGCAACCGTCCGACCAACCCGGCGCCACCCACGGTACAGGGGCTGGACCAGCAGGGCCAGCT
CTCAGCCCCCTGGGACTGTCATTGCTGCCTTATCAGGACTTCTGGCACTACAGCAGCCCCTAGGGTCAA
GGAGGGCCACTGAGGTCTCTCCTATGTTCAAGGATGTTGACGGGGGCCCCATGGAGGGGCTGCTG
GTTCTGAAGAGACCCTGAGGGAGCTCCTGAGAGATCAGGCTCATCTTCAGCCACTTCAAACCCAGGTGG
TTTCCAGGGGTTCCACAATCCGAGCCTTCTGGGCAACCAGACTTTGTCTCTCCAGCCGCCCCACTGT
TGGGCTGACCCAGTGGCTGAACTTGAAGTCTCCTCAGGCTCAGGGTCCCTGCTGATGGCTGAGCCTAGT
GTGACCACATCTGGGAGCCTTCTGACAAGATCCCCACCCAGCCCTTTCTCCCAATTCAACCTACTT
CCCTCATTAAGATGGAGCCCCATGACATA

ACGCGTACGCGGGCCGCTCGAGCAGAACTCATCTCAGAAGAGGATCTGGCAGCAAATGATATCCTGGATT
ACAAGGATGACGACGATAAGGTTTAA

Protein Sequence: >RC226077 protein sequence
 Red=Cloning site Green=Tags(s)

MAITLQPSDLIFEFASNGMDDDIHQLEDPSVFPVAVEQVYPDLLHLYSGLELDDVHNGIITDGTLCMT
 QDQILEGSFLLTDDNEATSHTMSTAEVLLNMESPSDILDEKQIFSTSEMLPDSDPAPAVTLPNYLPASE
 PDALNRAGDTSQEGHSLEEKASREESAKKTGKSKKRIRKTKGNRSTSPVTDPSIPIRKSKDGKSTIY
 LWEFLALLQDRNTCPKYIKWTQREKGIKLVDSKAVSKLWGWKQKNKPDMMNYETMGRALRYYYQRGILAK
 VEGQRLVYQFKEMPKDLVVIIEDESEATAAPPQASTASVASASTTRRTSSRVSSRSAPQKGSSSWEK
 PKIQHVGLQPSASLELGPSTLDEEIPPTSTMLVSPAEGQVKLTKAVSASSVPSNIHLGVAPVGSALTQ
 TIPLTTVLTNGPPASTTAPTQLVLQSVPAASTFKDTFTLQASFLNASFQDSQVAAPGAPLILSGLPQLL
 AGANRPTNPAPPTVTGAGPAGPSSQPPGTVIAAFIRTSGTTAAPRVKEGPLRSSSYVQGMVTGAPMEGLL
 VPEETLRELLRDQAHQLPLTQVVSARGSHNPSLLGNQTLSPPSRPTVGLTPVAELELSSGSGSLLMAEPS
 VTTSGSLLTRSPTPAPFSPFNPTSLIKMEPHDI

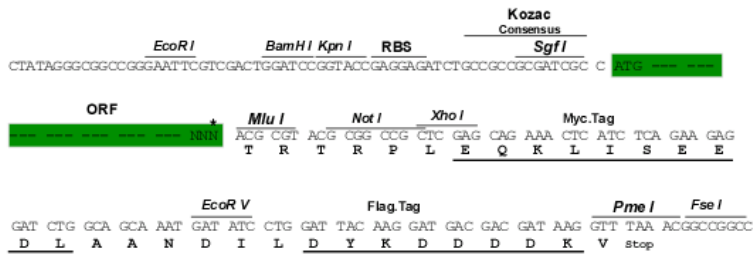
TRTRPLEQKLISEEDLAANDILDYKDDDDKV

Chromatograms: https://cdn.origene.com/chromatograms/mk6153_b03.zip

Restriction Sites: Sgfl-MluI

Cloning Scheme:

Cloning sites used for ORF Shuttling:



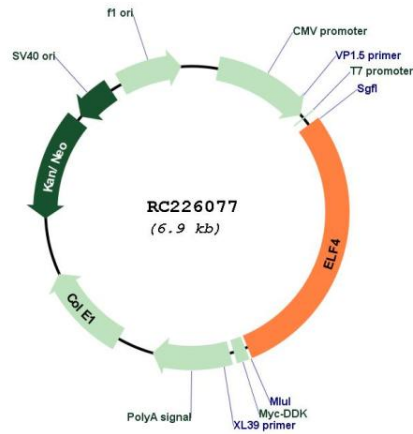
* The last codon before the Stop codon of the ORF

ACCN: NM_001127197

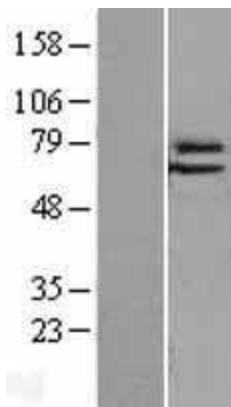
ORF Size: 1989 bp

OTI Disclaimer:	<p>Due to the inherent nature of this plasmid, standard methods to replicate additional amounts of DNA in E. coli are highly likely to result in mutations and/or rearrangements. Therefore, OriGene does not guarantee the capability to replicate this plasmid DNA. Additional amounts of DNA can be purchased from OriGene with batch-specific, full-sequence verification at a reduced cost. Please contact our customer care team at custsupport@origene.com or by calling 301.340.3188 option 3 for pricing and delivery.</p> <p>The molecular sequence of this clone aligns with the gene accession number as a point of reference only. However, individual transcript sequences of the same gene can differ through naturally occurring variations (e.g. polymorphisms), each with its own valid existence. This clone is substantially in agreement with the reference, but a complete review of all prevailing variants is recommended prior to use. More info</p>
OTI Annotation:	<p>This clone was engineered to express the complete ORF with an expression tag. Expression varies depending on the nature of the gene.</p>
Components:	<p>The ORF clone is ion-exchange column purified and shipped in a 2D barcoded Matrix tube containing 10ug of transfection-ready, dried plasmid DNA (reconstitute with 100 ul of water).</p>
Reconstitution Method:	<ol style="list-style-type: none">1. Centrifuge at 5,000xg for 5min.2. Carefully open the tube and add 100ul of sterile water to dissolve the DNA.3. Close the tube and incubate for 10 minutes at room temperature.4. Briefly vortex the tube and then do a quick spin (less than 5000xg) to concentrate the liquid at the bottom.5. Store the suspended plasmid at -20°C. The DNA is stable for at least one year from date of shipping when stored at -20°C.
RefSeq:	NM_001127197.2
RefSeq Size:	4096 bp
RefSeq ORF:	1992 bp
Locus ID:	2000
UniProt ID:	Q99607
Cytogenetics:	Xq26.1
Protein Families:	Transcription Factors
MW:	70.7 kDa
Gene Summary:	<p>The protein encoded by this gene is a transcriptional activator that binds and activates the promoters of the CSF2, IL3, IL8, and PRF1 genes. The encoded protein is involved in natural killer cell development and function, innate immunity, and induction of cell cycle arrest in naive CD8+ cells. Two transcript variants encoding the same protein have been found for this gene.[provided by RefSeq, Jan 2010]</p>

Product images:



Circular map for RC226077



Western blot validation of overexpression lysate (Cat# [LY426701]) using anti-DDK antibody (Cat# [TA50011-100]). Left: Cell lysates from untransfected HEK293T cells; Right: Cell lysates from HEK293T cells transfected with RC226077 using transfection reagent MegaTran 2.0 (Cat# [TT210002]).