

Product datasheet for **RC226066**

SRRM3 (NM_001110199) Human Tagged ORF Clone

Product data:

Product Type:	Expression Plasmids
Product Name:	SRRM3 (NM_001110199) Human Tagged ORF Clone
Tag:	Myc-DDK
Symbol:	SRRM3
Mammalian Cell Selection:	Neomycin
Vector:	pCMV6-Entry (PS100001)
E. coli Selection:	Kanamycin (25 ug/mL)



[View online »](#)

ORF Nucleotide
Sequence:

>RC226066 representing NM_001110199
Red=Cloning site Blue=ORF Green=Tags(s)

TTTTGTAATACGACTCACTATAGGGCGGCCGGGAATTCGTCGACTGGATCCGGTACCGAGGAGATCTGCC
GCCCGGATCGCC

ATGTCCTCCACCGTGAACAACGGGGCGGCCAGCATGCAGTCCACACCCGACGCCGGAACGGCTTCCCGC
AGCCAGCTCCTCTCGGGACCTGGCCCGGGCGGAAGAGGAGCTGCGCGCCGCGAGCCGGCCCTGGT
GAAGCGCGCGCACCCGCGAGATCCTGGACCAGAGCGCAAGCGCGGGTGGAGCTCAAGTGCATGGAGCTG
CAGGAGATGATGGAGGAGCAGGGGTATTCGAGGAGGAGATTCGGCAGAAAGTGGGGACATTCCGGCAGA
TGCTGATGGAGAAGGAGGGAGTGTCTACCAGGGAGGACCGGCCTGGGGCCACATTGTGGCGGAGACCC
GCGGCTGACCGAGGGCGCTGAGCCGGCCCTGGAGTACGCGCCCTTTGACGATGACGACGGCCAGTGGAC
TGTGACTGCCCGCCTCTGCTACCGCGCCACCGCGGTACAGGACCAAGCATTGGTCTAGCAGCTCGG
CATCGCCCCCTCCAAGAAAAAGAAAAAGAAAGGCGGCCACCGGAGAAGCCGAAAAAGAGGAGACT
GGAGTCCGAATGCAGCTGTGGGAGCTCCTACCCCTCCGCAAGAAGAAGAAGAGTGTGAAGAAGCATCGC
CGAGACAGGTCTGATTCTGGGTCCCGGAGGAAGAGACGGCACAGATCTCGAAGCTCCAAGTGCAAAAGAA
AAGAGAAGAACAAGAGAAGAAGAGGCCTCACACAGAGTCCCCAGGCCGGAGGTCTCATCGCCATAGCAG
TGGCAGCTCCCACAGCCCTCCCTCTCCTCCCCTACAGTGATTCCAGATCTCCCAGCAGGCTGAGCCCC
AAGCACCGAGACGAAGGGCGAAAGACGGGCAGCCAGCGGTCCAGCGGAAGCCGGTTCGCTTCCCCGTCGG
GCGGCAGCGGATGGGGTTCGCCCCAGCGGAACGGCGGCAGCGGGCAGCGGAGCGGAGCGCACGGGGCCG
CCCCGGCTCGGCGCACAGCCGCCCGATAAGCCAGCTCGCCCTCGCCAGGGTCCGTGACAAGGCGGGC
GCCGCCACCCACGCCGCCCGCGGGGGAAGGAGAGCCGAGCCCGCTCGGCGCCGCTCGTCCCAAG
GTCGCGGAGCCCGCGGGCGGGCGGGCAGGCGCGCGGGCGGGCGGCGGTAGGCGGGCGGCTCGCG
GTCCTCGGCGTCCGCGCCCCCGCGAGGGTTCGCGCGCGCCCCCGCGCCCGCCCCCGGGGCTCGTCTG
CGTCTCGCTCAGCAGGGCCGCTCCAGCAGCGACTCCGGCAGCGCGCGCGGCCCGGCCCGGGCCCG
AGCCCGGCTCTGAGCGAGGCCACGGCGACACGGGAAACGGGCAAGGAGCGGCCCGCGCGCGGGCC
CGCCAGCACCTCTCCGTCCCCGGCGCGCACGGCCGGCGGGCGGCCAGAGGGAAAGAGCTCGTCTGCGC
AGCCCCGGCCCGCACCCCGCTCCTGGAGCTCCAGCCGCTCGCCCTCAAATCTCGCTCGCGCTCTGCGG
AGAAGCGGCCCCACAGCCCAGCCGCTCGCCGTCGCCAAGAAGCCCTCAGCCGGGACAAGGACGGCGA
GGGCCGCGCAAGGCACTCTGAGGCGGAGCCACCCGCGCCGGCGCGCTCCCGAGCTACTCGCCATC
CGCAAGCGGCGCGGGACTCGCCAAGCTTCATGGAGCCGCGGCGCATACCAGCGCCCGAAGCGTCTTA
TTCCATACTACCGGCCAGCCCTCTTCTCTCCAGCTGTTGAGCAGGACTACTCGACCCGGAGCCA
CAGCCGAGCCCGAGCCCGGCCACAGCCAGGGAGCTACAGCAGTTCGAGCCATGGGACCCGAGCCGG
ACACGAGCCCTCGAGGACCCAGTCCAGCTACCACAGCCGGAGCAGCTCTGAGAGCGGGGGCTTC

ACGCGTACGCGGCCGCTCGAGCAGAACTCATCTCAGAAGAGGATCTGGCAGCAATGATATCCTGGATT
ACAAGGATGACGACGATAAGGTTTAA

Protein Sequence: >RC226066 representing NM_001110199
Red=Cloning site Green=Tags(s)

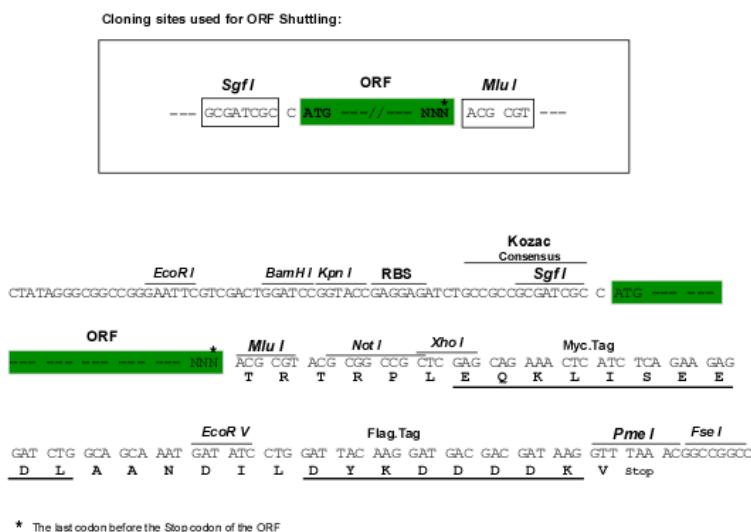
MSSTVNNGAASMQSTPDAANGFPQPSSSSGTWPRAEEELRAAEPGLVKRAHREILDHERKRRVELKCMEL
 QEMMEEQGYSEEEIRQKVGTFRQMLMEKEGVL TREDRPGGHIVAETPRL TEGAEPGLEYPFDDDDGPVD
 CDCPASCYRGRGYRTKHWSSSASPPPKKKKKKKGGHRRSRKKRRLSECSGSSSPLRKKKKSVKKHR
 RDRSDSGSRRRKRHRSRSSKCKRKEKNEKPKRPHTE SPGRRSHRHSSGSSHSPSLSSHYSDSRSPSRLSP
 KHRDEGRK TGSQRSSGSRSPSPSGSGWGSPQRNGGSGQRSGAHGGRPGSAHSPDPKSSPSPRVDRKAA
 AAAPTPARGKESPPRSAPSSQGRGGRAAGGAGRRRRRRRRRRSRSSASAPRRRRRRRPRPAPPRGSS
 RSLSRARSSDSGSRGAPGPGPEPGERGHGGH GKRAKERPPRARPASTSPSPGAHGRRGGPEGKSSSR
 SPGPHPRWSSSRSPSKRSRSAEKRPHPSPRSPSPKKPLSRDKDGEGRARHSEAEATRARRRSYSPI
 RKRRRDSPSFMEPRRITSARKRP IPYYRPS P SSSSCLSSDYSTRSHSRSPSPGSHSGYSRRSHGTRSR
 TRSPSRTPSPSYHSR SSSSESGGF

TRTRPLEQKLI SEEDLAANDILDYKDDDDKV

Chromatograms: https://cdn.origene.com/chromatograms/mk8071_f03.zip

Restriction Sites: SgfI-MluI

Cloning Scheme:



ACCN: NM_001110199

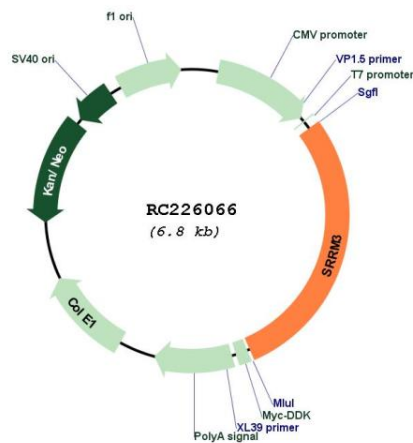
ORF Size: 1959 bp

OTI Disclaimer: The molecular sequence of this clone aligns with the gene accession number as a point of reference only. However, individual transcript sequences of the same gene can differ through naturally occurring variations (e.g. polymorphisms), each with its own valid existence. This clone is substantially in agreement with the reference, but a complete review of all prevailing variants is recommended prior to use. [More info](#)

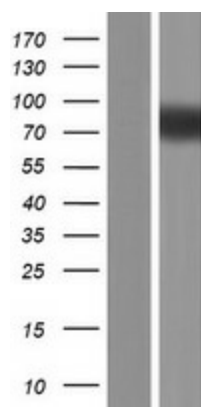
OTI Annotation: This clone was engineered to express the complete ORF with an expression tag. Expression varies depending on the nature of the gene.

- Components:** The ORF clone is ion-exchange column purified and shipped in a 2D barcoded Matrix tube containing 10ug of transfection-ready, dried plasmid DNA (reconstitute with 100 ul of water).
- Reconstitution Method:**
1. Centrifuge at 5,000xg for 5min.
 2. Carefully open the tube and add 100ul of sterile water to dissolve the DNA.
 3. Close the tube and incubate for 10 minutes at room temperature.
 4. Briefly vortex the tube and then do a quick spin (less than 5000xg) to concentrate the liquid at the bottom.
 5. Store the suspended plasmid at -20°C. The DNA is stable for at least one year from date of shipping when stored at -20°C.
- RefSeq:** [NM_001110199.3](#)
- RefSeq ORF:** 1962 bp
- Locus ID:** 222183
- Cytogenetics:** 7q11.23
- MW:** 71.4 kDa

Product images:



Circular map for RC226066



Western blot validation of overexpression lysate (Cat# [LY426313]) using anti-DDK antibody (Cat# [TA50011-100]). Left: Cell lysates from untransfected HEK293T cells; Right: Cell lysates from HEK293T cells transfected with RC226066 using transfection reagent MegaTran 2.0 (Cat# [TT210002]).