

Product datasheet for **RC226059**

FAM178B (NM_001122646) Human Tagged ORF Clone

Product data:

Product Type:	Expression Plasmids
Product Name:	FAM178B (NM_001122646) Human Tagged ORF Clone
Tag:	Myc-DDK
Symbol:	FAM178B
Mammalian Cell Selection:	Neomycin
Vector:	pCMV6-Entry (PS100001)
E. coli Selection:	Kanamycin (25 ug/mL)



[View online »](#)

ORF Nucleotide Sequence:

>RC226059 representing NM_001122646
 Red=Cloning site Blue=ORF Green=Tags(s)

TTTTGTAATACGACTCACTATAGGGCGGCCGGAATTCGTCGACTGGATCCGGTACCGAGGAGATCTGCC
 GCC**CGGATCGCC**

ATGGCTGGGCCCCAGGAGACGGTCTAGCCCTTCTCTGAGAGAAGGGGTGCAGGCTGCCGCCACCGTGC
 CCATCCTCCTGTACAACCTGGAGGATGGCTTGTACAGACCATCCCCGGACCAGGGGCCCGCTGCCCTGC
 CCGGCGGCCCTGCAGCCCTGCCTCGGCTCCAGCTCCCACATCGCCAAAGAAGCCCAAGATACAGGCACCT
 GGGGAAACGTTTCCCACTGACTGGAGCCCCCGCCCGTGAATTCCTCAACCCGAGGGTGTGCAGGCCA
 GTCGGGAGGCCCGGCCAGAGGTGGTGGTGTGGTGGGCCCCAGGGCCTGAGGAGACTGGTGGTGA
 GCTGCCGAGGAGTTGGAGCAGGAACACCTGGACTTGGACCCGAAGAGGGGCCTGGCCTTCCAGAGAAG
 CTGTTCTGGAACACGTCAGGCCAGGCTGAGCCAGCAGGCTGCGGCCAGAGTTTCTGGGGGGCTCAGGAA
 GCTACTTCAACAACCTGGACTACTTACTGCAGGAGAAGAGGGAACAGGCCCTGGAGCAGGAGCGAGAGAG
 GCTGCTTCTGCAGGAGTGTCTCAATCTCAACTCCTTGGATCTTGATGAAGAGGAAGTCCACTCACACCC
 GAGCACAGGATGCTGGTGGAAAAGTACTCAGTGTCCCTGCAGACCATCCCGCCGGTCCATCCAGGTGAGA
 CTGTGTTTCTGCCAGGTGTACCCCTGCCATGCATCCTGGACTCCTCACTCCTGAAGCCACGCAGCCA
 CCTGGAAGGGCTGTTCTCAGCTCCCCGCCAGCCCAACAGCTCTCCTTCTGCGCAGTGGCTCCTGAAC
 ATCCTCTACCTGCACATGCCTGACTGCCCGGTATCCCTGCTCCAGTGGCTGTTCCAGCTGCTGACATGGC
 CTCCAGAAACATCTTTGGGAGCCTTTGGTCTTCTGTGGGATCTCATTGTGGATGGAATCTTCTTCAGCC
 TGATGAAGACAAGCACCTGTGGTGGCCCTCACTGCAAGAAGTCAAGGAGGCATCCACAGCCTGGGTGCC
 CACAGTCTGCCCTGTACCCTCTGGGGCCCTTTGGCACGGTGGCAGGGTGTCTCCAGCGAGGCTGGCC
 TGATGAGAATGAGGAGCAGGACGCTCCCAAGAGATTGCCTTGGACATCAGCCTGGGCCACATCTACAA
 GTTTCTGGCGCTGTGTGCCAGGCCAGCCGGGGCCTACACTGATGAGAACCTCATGGGACTGATTGAG
 CTGCTGTGCCGCACCAGCCTGGACGTGGGGCTCCGCCTGCTGCCAAAAGTTGACCTCCAGCAGCTTCTCC
 TCTTGCTCCTGGAGAACATCCGGGAGTGGCCAGGGAAGCTCCAGGAACTGTGCTGCACCCTGAGTGGGT
 GTCTGACCACCACCACAACCTGCTGGCCCTCGTGCAGTTCTTCCAGACATGACCTCCCGGAGCAGGCGG
 CTTGGAAGCCAGCTCAGCCTTGTGGTATTGCTCGAATGCTGGGCCAGCAGGAGATGCTCCCTCTTGGC
 AAGAGAAGACCCAGCTGTCTCGCTCAGCCGGCTCCTGGGCTCATGAGGCCATCATCTCTCAGGCAATA
 CCTGGACTCTGTGCCCTTGCCACCCTGCCAGGAGCAACAGCCAAAGGCTAGTGCCGAGCTAGACCACAAG
 GCCTGCTACCTGTGCCACAGCTTGTGATGCTGGCCGGGTAGTTGTTAGCTGCCAGGACATCACTCCAG
 ACCAGTGGGGCGAGCTGCAGCTGCTGTGCATGCAGTTGGACCGCCACATCAGCACGAGATCCGGGAGAG
 CCCCCAGGCCATGCACCCACCATGCTCAAGGACCTGGCTACCCAGACCTACATCCGTTGGCAGGAGCTG
 CTGACCCACTGCCAGCCCCAGGCCAGTATTTAGCCCTGAAAAGACATC

ACGCGTACGCGGCCGCTCGAGCAGAACTCATCTCAGAAGAGGATCTGGCAGCAAATGATATCCTGGATT
 ACAAGGATGACGACGATAAGGTTTAA

Protein Sequence: >RC226059 representing NM_001122646
Red=Cloning site Green=Tags(s)

```
MAGPQETVLALPLREGVQAAATVPILLYNLEDGLSDHPLDQGPRCPARRPCSPASAPAPTSPKKPKIQAP
GETFPTDWSPPPVEFLNPRVLQASREAPAQRWVGVPQGLRRLAGELPEEELEQEHLDLDPKRGLALPEK
LFWNTSGLSQQAAAEFSWGGSGSYFNNDYLLQEKREQALEQERERLLLQECLNLSLDLDEEEVPLTP
EHRMLVEKYSVSLQTIPPVHPGETVFLPRCHPLPCILDSSLLKPRSHLEGLFLSSPPAQQLSFLRSGLLN
ILYLHMPDCPVSLQWLFQLLTWPPETSLGAFGLLWDLIVDGI FLQPDEDKHLWCPSLQEVREAFHSLGA
HSPALYPLGPFWHGGRVLPGEAGLNENEEQDAPQEIALDISLGHYKFLALCAQAQP GAYTDENLMGLIE
LLCRTSLDVGLRLLPKVDLQQLLLLLLENIREWPGKLQELCCTLSWVSDHHHNLALVQFFPDMTSRSRR
LRSQSLVVIARMLGQEQMLPLWQEKQLSSLSRLGLMRPSSLRQYLDVPLPPCQEQQPKASAELDHK
ACYLCHSLLMLAGVVVSCQDITPDQWGELQLLCMQLDRHISTQIRESPQAMHRTMLKDLATQTYIRWQEL
LTHCQPQAQYFSPWKDI
```

TRTRPLEQKLI SEEDLAANDILDYKDDDDKV

Chromatograms: https://cdn.origene.com/chromatograms/mk8034_e06.zip

Restriction Sites: SgfI-MluI

Cloning Scheme:



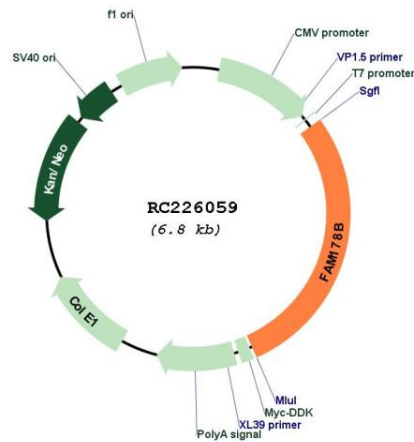
ACCN: NM_001122646

ORF Size: 1941 bp

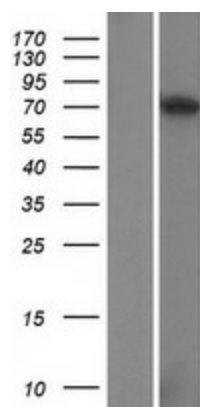
OTI Disclaimer: The molecular sequence of this clone aligns with the gene accession number as a point of reference only. However, individual transcript sequences of the same gene can differ through naturally occurring variations (e.g. polymorphisms), each with its own valid existence. This clone is substantially in agreement with the reference, but a complete review of all prevailing variants is recommended prior to use. [More info](#)

OTI Annotation: This clone was engineered to express the complete ORF with an expression tag. Expression varies depending on the nature of the gene.

Components:	The ORF clone is ion-exchange column purified and shipped in a 2D barcoded Matrix tube containing 10ug of transfection-ready, dried plasmid DNA (reconstitute with 100 ul of water).
Reconstitution Method:	<ol style="list-style-type: none"> 1. Centrifuge at 5,000xg for 5min. 2. Carefully open the tube and add 100ul of sterile water to dissolve the DNA. 3. Close the tube and incubate for 10 minutes at room temperature. 4. Briefly vortex the tube and then do a quick spin (less than 5000xg) to concentrate the liquid at the bottom. 5. Store the suspended plasmid at -20°C. The DNA is stable for at least one year from date of shipping when stored at -20°C.
RefSeq:	<u>NM_001122646.1, NP_001116118.1</u>
RefSeq ORF:	2040 bp
Locus ID:	51252
UniProt ID:	<u>Q8IXR5</u>
Cytogenetics:	2q11.2
MW:	72.85 kDa

Product images:


Circular map for RC226059



Western blot validation of overexpression lysate (Cat# [LY426541]) using anti-DDK antibody (Cat# [TA50011-100]). Left: Cell lysates from untransfected HEK293T cells; Right: Cell lysates from HEK293T cells transfected with RC226059 using transfection reagent MegaTran 2.0 (Cat# [TT210002]).