

Product datasheet for **RC226056**

ABLIM2 (NM_001130083) Human Tagged ORF Clone

Product data:

Product Type:	Expression Plasmids
Product Name:	ABLIM2 (NM_001130083) Human Tagged ORF Clone
Tag:	Myc-DDK
Symbol:	ABLIM2
Mammalian Cell Selection:	Neomycin
Vector:	pCMV6-Entry (PS100001)
E. coli Selection:	Kanamycin (25 ug/mL)



[View online »](#)

ORF Nucleotide Sequence:

>RC226056 representing NM_001130083
 Red=Cloning site Blue=ORF Green=Tags(s)

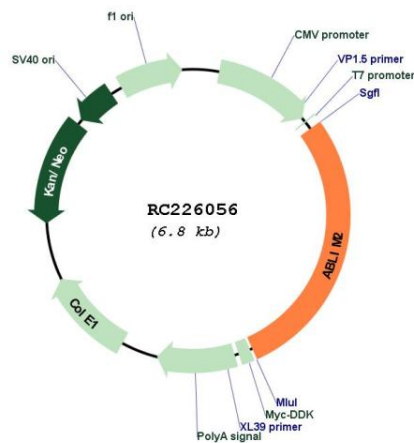
TTTTGTAATACGACTCACTATAGGGCGGCCGGAATTCGTCGACTGGATCCGGTACCGAGGAGATCTGCC
 GCC**GCGATCGCC**

ATGAGTGCAGTGTGCGAGCCCCAGGCTGCTCCCAGCCCGTGGAGAAGTCGCCAGCACGGCGATCCTGT
 GCAACACGTGTGGGAATGTGTGCAAGGGCGAGGTGCTGCGGGTGCAGGACAAGTACTTCCACATCAAGT
 CTTCTGTGTAAGCATGTGGCTGCGACCTGGCCGAGGGCGGCTTCTTCGTGCGGCAGGGCGAGTACATC
 TGCACGCTGGACTACCAGAGGCTCTACGGCACCCGCTGCTTCAGCTGCGACCAGTTCATTGAGGGTGAGG
 TGGTGTGCGGCGTGGCAAGACCTACCACCCGACTGCTTCGTGTGTGCCGTCTGCCGGTGCCTTCCC
 CCCCAGGGACCGAGTGACCTTCAACGGGAAGGAATGCATGTGCCAGAAGTGTTCCTGCCGTATCGGTG
 GGCAGCAGCGCACCTGTCCCAGGGCCTCCGAAGTTGTGGGGGTGCGGCACAGAAATCAAGAATGGCC
 AGGCCCTGGTAGCCTTGACAAGCACTGGCACTGGGGTGTTTAAGTCAAGAGCTGTGGGAAGCTCCT
 GAATGCCGAGTACATCAGCAAGGATGGGCTGCCCTACTGCGAAGCTGACTATCACGCCAAGTTCGGCATC
 CGCTGTGACAGCTGTGAGAAATACATCACGGGGCGGTGCTGGAGCCGGAGAGAAGCACTACCACCTT
 CCTGCGCGCTATGTGTCAGGTGCGGCCAGATGTTTGCAGAAGGCCAAGAGATGTATCTTCAAGTTCCCTC
 CATCTGGCATCCGGCGTGTGACAAGCAGCCAGAACTGAAGACAGAAACAAGGAAACCAGAACTTCTCTCA
 GAGAGCATCATTCTGTCCCTGCTTCCAGCACCTCAGGGTCTCCGAGCCGTGTGATTTATGCCAAGCTTG
 GTGGTGAGATCCTGGACTACAGGGACTTGGCAGCCCTTCTAAAAGTAAGGCCATCTATGACATCGACCC
 CCCCAGATGATCTCCTACTCACCTACATCAGCCACTTGCAGGGGACAGGCAGAGCTACGGCGAGGGG
 GATCAGGATGACCGTCTACAAGCAGTGTGCGACCTCCAGCCCAAGCTCCACTGGTTCGTTAGCCTCG
 GCGCTACACTCCGACCTCACGGTCACCACAGCACTACAGCCGTCCAGCTGGTACTGTGAGTGTGGGTAC
 CAGTAGCTGCCTCTCCCTGTCCCAACACCCAAGCCCTACATCCGTGTTTCAGACATCATTACATCCCCTAC
 TCCGAGGCAGTGAAAGTGGCCGGAGCACCCCCAGCCTCTCCGTGCTCTGTGACAGCAAGCCGCCCCCT
 CCACCTACCAGCAGGCACCTCGCCACTTCCACGTCCCAGACACTGGCGTAAAAGATAACATCTATAGGAA
 ACCCCCTATCTACAGACAGCATGCTGCCAGGCGATCGGATGGGGAGGATGGAAGCTTGGACCAGGATAAC
 AGGAAGCAGAAGAGCAGCTGGCTGATGCTCAAGGGGGATGCAGACACAAGGACCAATTCTCCAGACCTGG
 ACACCCAGTCCTGTCCACAGCAGCGGGACCGACAGAGACCTCTCAAAGGATGGCAGGGGACAGCTT
 TCACTCACGATCCCCTATTCAAATCTGACCCTCTCCAGGACATGGAAGAATGGCTTGGACCAGCGG
 AATGCCAATCTGGCCCCCTGTGGAGCAGACCCGGATGCCAGCTGGGGCATGCGAGAATACAAGATCTATC
 CGTATGACTCCCTCATCGTCACAAACCGAATTCGCGTGAAACTGCCCAAAGACGTGGACCGGACGAGACT
 GGAGAGACACTTGTGCCCCGAGGAGTTCAGGAAGTGTGGGATGAGCATCGAGGAGTTTGACCGCCTG
 GCCCTCTGGAAGAGGAATGACCTTAAGAAGAAAGCCCTTTTGTTC

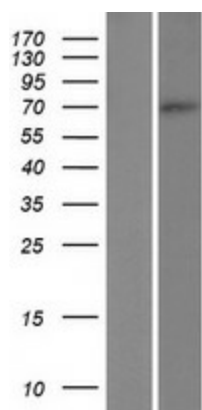
ACGCGTACGCGGCCGCTCGAGCAGAACTCATCTCAGAAGAGGATCTGGCAGCAATGATATCCTGGATT
 ACAAGGATGACGACGATAAGGTTTAA

Components:	The ORF clone is ion-exchange column purified and shipped in a 2D barcoded Matrix tube containing 10ug of transfection-ready, dried plasmid DNA (reconstitute with 100 ul of water).
Reconstitution Method:	<ol style="list-style-type: none"> 1. Centrifuge at 5,000xg for 5min. 2. Carefully open the tube and add 100ul of sterile water to dissolve the DNA. 3. Close the tube and incubate for 10 minutes at room temperature. 4. Briefly vortex the tube and then do a quick spin (less than 5000xg) to concentrate the liquid at the bottom. 5. Store the suspended plasmid at -20°C. The DNA is stable for at least one year from date of shipping when stored at -20°C.
RefSeq:	<u>NM_001130083.2</u>
RefSeq ORF:	1938 bp
Locus ID:	84448
UniProt ID:	<u>Q6H8Q1</u>
Cytogenetics:	4p16.1
Protein Pathways:	Axon guidance
MW:	71.4 kDa
Gene Summary:	May act as scaffold protein. May stimulate ABRA activity and ABRA-dependent SRF transcriptional activity.[UniProtKB/Swiss-Prot Function]

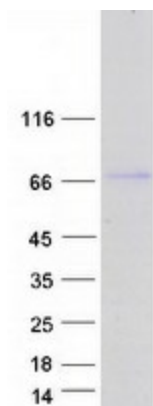
Product images:



Circular map for RC226056



Western blot validation of overexpression lysate (Cat# [LY427151]) using anti-DDK antibody (Cat# [TA50011-100]). Left: Cell lysates from untransfected HEK293T cells; Right: Cell lysates from HEK293T cells transfected with RC226056 using transfection reagent MegaTran 2.0 (Cat# [TT210002]).



Coomassie blue staining of purified ABLIM2 protein (Cat# [TP326056]). The protein was produced from HEK293T cells transfected with ABLIM2 cDNA clone (Cat# RC226056) using MegaTran 2.0 (Cat# [TT210002]).