

## Product datasheet for **RC226055**

### **ENOX1 (NM\_001127615) Human Tagged ORF Clone**

#### **Product data:**

Product Type:	Expression Plasmids
Product Name:	ENOX1 (NM_001127615) Human Tagged ORF Clone
Tag:	Myc-DDK
Symbol:	ENOX1
Synonyms:	bA64J21.1; cCNOX; CNOX; PIG38
Mammalian Cell Selection:	Neomycin
Vector:	pCMV6-Entry (PS100001)
E. coli Selection:	Kanamycin (25 ug/mL)



[View online »](#)

ORF Nucleotide  
Sequence:

>RC226055 ORF sequence  
Red=Cloning site Blue=ORF Green=Tags(s)

TTTTGTAATACGACTCACTATAGGGCGGCCGGGAATTCGTCGACTGGATCCGGTACCGAGGAGATCTGCC  
GCC**CGGATCGCC**

ATGGTAGATGCAGGTGGAGTTGAGAACATCACCCAGCTTCCCCAGGAGCTTCCCTCAGATGATGGCTGCAG  
CAGCCGATGGTTTGGGGAGTATAGCGATAGACACGACCCAGCTCAACATGTCCGTGACAGATCCCACAGC  
CTGGGCTACAGCCATGAATAACCTGGGCATGGTCCCCTAGGGTTGCCTGGACAGCAGCTCGTGTCTGAC  
TCAATCTGTGTCCAGGCTTTGATCCAAGCCTCAACATGATGACTGGAATCACCCCCATTAACCCAAATGA  
TACCAGGCCTTGGACTGGTACCTCCCCACCACCAACAGAAGTGGCTGTTGTCAAAGAAATAATCCACTG  
CAAAAGCTGTACTCTTTTTCTCAAATCCAAATCTTCCACCTCCTTCCACAAGAGAACGACCTCCTGGG  
TGTAAGACCGTGTGTGCGGAGGATTACCAGAAAATGCTACTGAGGAAATTTTCAAGAAGTCTTTGAAC  
AGTGCGGTGATATTACAGCAATTCGAAAAGCAAGAAGAATTTTGTACATTGCTTTGCAGAGGAATT  
CATGGTTGATAAAGCCATTTACCTTTCTGGTTATAGGATGCGATTAGGGTCTAGCACCGACAAAAAGGAT  
TCAGGCCGCCCTTCAATGTGGACTTTGCCAGGCCAGGGATGACTTCTATGAGTGGGAATGCAAGCAGAGGA  
TGGCTGCCCGGGAGGAGCGGCACCGGCGCAAGCTGGAGGAGGACCGGCTCAGGCCCCATCCCCGCCTGC  
CATAATGCACTACTCGGAGCACGAAGCCGCTCTGCTGGCTGAAAAGCTGAAAAGATGATAGCAAGTTTCA  
GAGGCTATCACAGTGTGCTTTCTGGATTGAACGAGGGGAAGTGAATCGGCGCTCTGCAAACCAGTTCT  
ATTCATGGTGCAGTCGGCCAACAGCCACGTCCGCCGGCTAATGAATGAAAAAGCCACCCATGAGCAAGA  
GATGGAGGAAGCCAAGGAGAATTTAAAAATGCCTTAAGTGGGATTCTCACTCAATTTGAGCAGATTGTG  
GCCGTTTTCAACGCTTCTACCAGACAAAAGCTTGGGACCATTTCTCGAAAGCCAGCGCAAGAACATAG  
ACATTTGGCGAAAGCATTCTGAGGAGCTCCGGAATGCTCAAAGTGAAGCAGCTCATGGGCATCCGCCGCGA  
AGAAGAAATGGAATGTCTGATGATGAGAACTGTGACAGCCCTACAAAGAAAATGAGAGTCGATGAATCA  
GCCCTGGCTGCCAGGCCTACGCTCTGAAAGAGGAGAATGACAGTCTCCGCTGGCAGCTGGATGCCTACA  
GGAATGAGGTGGAGCTGCTGAAACAAGAAAAAGAACAGCTTTTCCGAACAGAAGAAAACCTCACCAAGGA  
CCAGCAACTGCAGTTTCTGCAGCAAACCATGCAAGGCATGCAGCAGCAATTGCTAACCATCCAGGAGGAG  
TTAAACAACAAAAGTCAGAATTGGAACAAGCAAAGGAGCAGTCCCATACACAAGCGTTACTAAAAG  
TCCTGCAGGAACAATTAAGGTACCAAGGAATTGGTCGAGACCAATGGCCACAGCCATGAGGATTCAAA  
TGAATCAATGTGTTGACAGTTGCATTAGTCAACCAAGACCGAGAGAACAATTTGAGAAAAGAAGCCAA  
GGCTTAAAATCAGAGAAAGAAGCTCTGCTAATAGGTATCATATCAACGTTTCTTACGTCCATCCTTTTG  
GAGCCAACATAGAATATCTTTGGTCATACATGCAGCAGCTGGACTCCAAGATATCTGCAAATGAAATAGA  
AATGCTTTTGATGAGGCTGCCACGCATGTTCAAACAGGAATTCACGGGTGTGGGAGCCACGCTGGAAAAA  
AGATGGAAGTTGTGTGCCTTTGAAGGAATTAAGTACC

**ACGCGT**ACGCGGCCGCTCGAGCAGAAACTCATCTCAGAAGAGGATCTGGCAGCAAATGATATCCTGGATT  
ACAAGGATGACGACGATAAGGTTTAA



**Reconstitution Method:**

1. Centrifuge at 5,000xg for 5min.
2. Carefully open the tube and add 100ul of sterile water to dissolve the DNA.
3. Close the tube and incubate for 10 minutes at room temperature.
4. Briefly vortex the tube and then do a quick spin (less than 5000xg) to concentrate the liquid at the bottom.
5. Store the suspended plasmid at -20°C. The DNA is stable for at least one year from date of shipping when stored at -20°C.

**RefSeq:** [NM\\_001127615.2](#)

**RefSeq Size:** 2706 bp

**RefSeq ORF:** 1932 bp

**Locus ID:** 55068

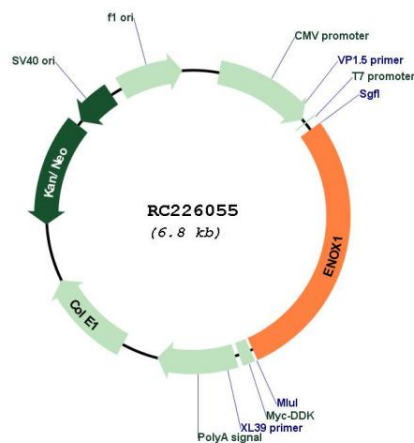
**UniProt ID:** [Q8TC92](#)

**Cytogenetics:** 13q14.11

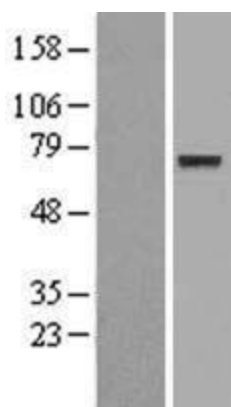
**MW:** 73.3 kDa

**Gene Summary:** The protein encoded by this gene is involved in plasma membrane electron transport pathways. The encoded protein has both a hydroquinone (NADH) oxidase activity and a protein disulfide-thiol interchange activity. The two activities cycle with a periodicity of 24 minutes, with one activity being at its peak when the other is at its lowest. [provided by RefSeq, Dec 2016]

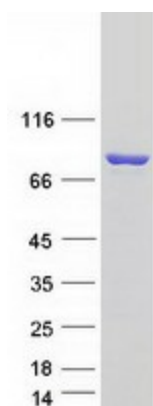
## Product images:



Circular map for RC226055



Western blot validation of overexpression lysate (Cat# [LY426824]) using anti-DDK antibody (Cat# [TA50011-100]). Left: Cell lysates from untransfected HEK293T cells; Right: Cell lysates from HEK293T cells transfected with RC226055 using transfection reagent MegaTran 2.0 (Cat# [TT210002]).



Coomassie blue staining of purified ENOX1 protein (Cat# [TP326055]). The protein was produced from HEK293T cells transfected with ENOX1 cDNA clone (Cat# RC226055) using MegaTran 2.0 (Cat# [TT210002]).